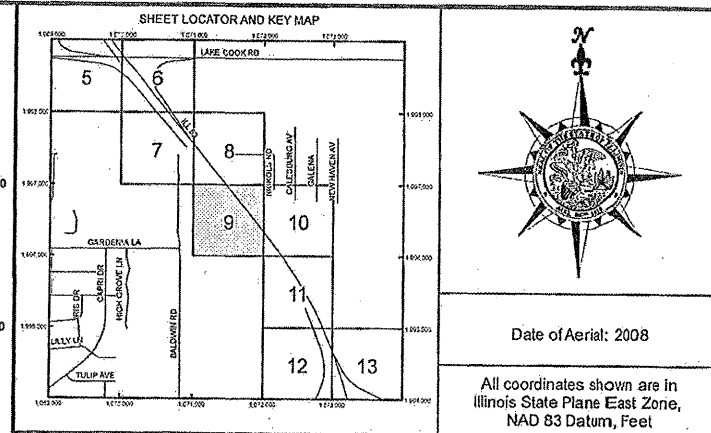
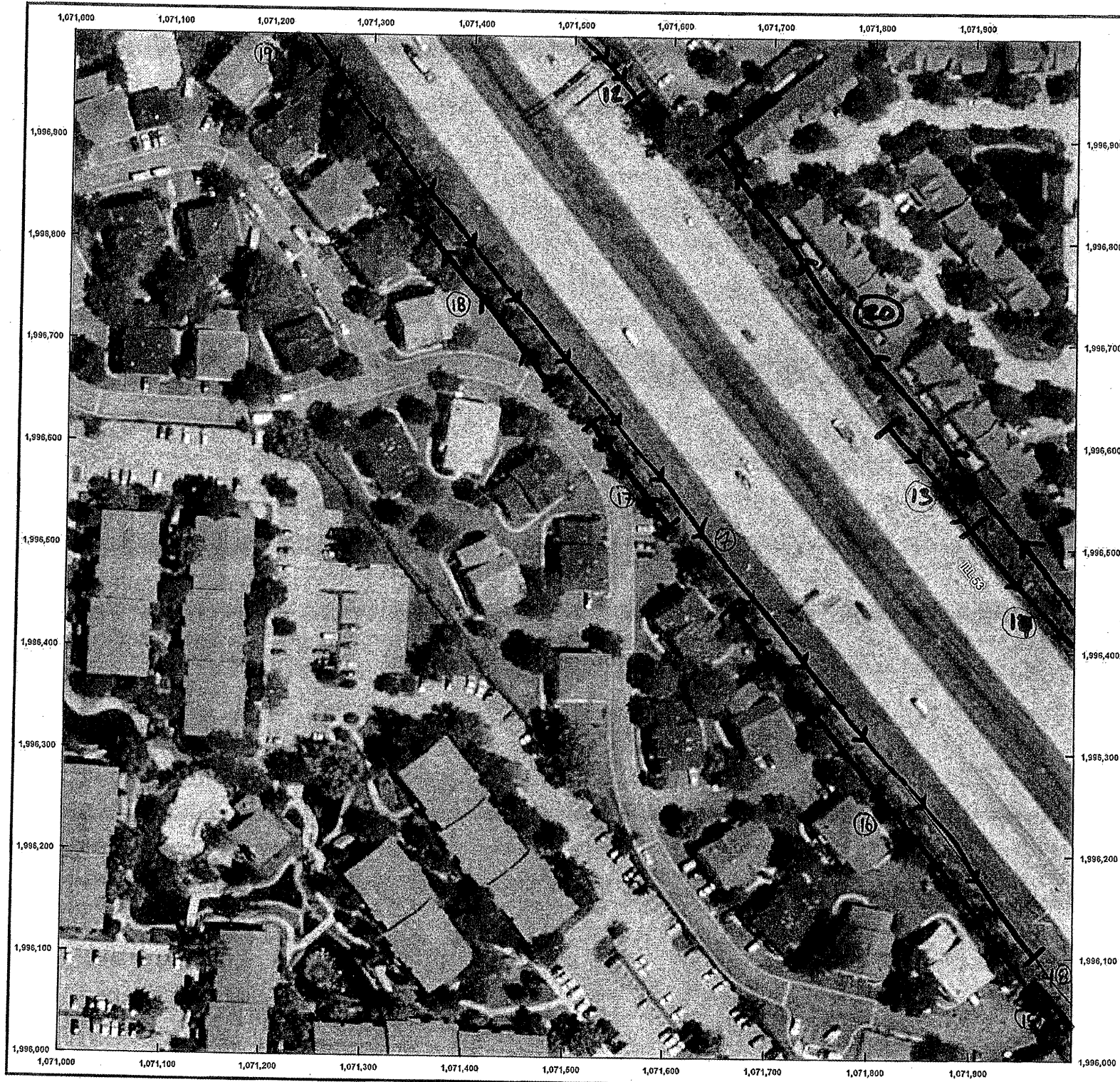


ROUTE	SECTION	COUNTY	TOTAL SHEETS	SHEET NUMBER
FAP 342	2011-026-1	COOK & LAKE	71	66

CONTRACT NO. 60P26



(58) East side wall - selective clearing / tree removal

⑦ 2808' x 6' / 9.4, 9, 7.9

(58) West side wall - selective clearing / tree removal

⑤ 30' x 3'	15.8	7.4	9.9	9.5	11.8	7.1
⑥ 427' x 3'	3.1	9.9	10.2	6.2	1.4	9.1
⑦ 87' x 3'	3.2	9.6	7	7.6	4.5	9.9
⑧ 265' x 3'	3.1	10.5	8.1	7.3	7.4	
⑨ 16' x 2'	9.2	9.7	8.3	15.5	11.2	
	2.5	8	6.5	16.3	9	
	6.1	8.6	6.3	12.2	2.1	

(18) West side wall - selective clearing / tree removal:

⑫ 95' x 5'	8.1
⑬ 105' x 5'	7
⑭ 240' x 10'	10.3

(18) East side wall - selective clearing / tree removal:

⑳ 615' x 3'	16
	8
	6.8
	10

ILLINOIS DEPARTMENT OF  
TRANSPORTATION  
ILL RTE 53  
SELECTIVE CLEARING & TREE  
REMOVAL  
SHEET 6 OF 9