

GENERAL NOTES

- ALL CONSTRUCTION SHALL BE DONE IN ACCORDANCE WITH THE DETAILS IN THE PLANS, THE SPECIAL PROVISIONS INCLUDED IN THE CONTRACT DOCUMENTS, AND THE LATEST EDITION OF THE FOLLOWING STATE OF ILLINOIS SPECIFICATIONS: "THE STANDARD SPECIFICATIONS FOR ROAD AND BRIDGE CONSTRUCTION" (REFERRED TO AS THE "STANDARD SPECIFICATIONS"), THE "SUPPLEMENTAL SPECIFICATIONS AND RECURRING SPECIAL PROVISIONS", THE "MANUAL ON UNIFORM TRAFFIC CONTROL DEVICES FOR STREETS AND HIGHWAYS" AND THE "MANUAL OF TEST PROCEDURES FOR MATERIALS".
- BEFORE STARTING ANY EXCAVATION, THE CONTRACTOR SHALL CALL "J.U.L.I.E." AT (800) 892-0123 FOR FIELD LOCATIONS OF BURIED ELECTRIC, TELEPHONE, AND GAS FACILITIES. 48 HOUR NOTIFICATION REQUIRED.
- THE CONTRACTOR WILL NOT BE ALLOWED TO SET UP A YARD OR FIELD OFFICE ON STATE PROPERTY WITHOUT THE WRITTEN PERMISSION OF THE DEPARTMENT.
- THE CONTRACTOR SHALL COORDINATE ALL CONSTRUCTION ACTIVITIES WITH UTILITY COMPANIES, IMPROVEMENT LOCATED WITHIN THE VILLAGE OF PLAINFIELD, VILLAGE OF ROMEVILLE, VILLAGE OF BOLINGBROOK, CITY OF DARIEN, VILLAGE OF LEMONT, AND THE VILLAGE OF BURR RIDGE.
- THE CONTRACTOR SHALL CONTACT THE DISTRICT ONE TRAFFIC CONTROL SUPERVISOR AT (847) 705-4470 A MINIMUM OF 72 HOURS PRIOR TO INSTALLATION OF TEMPORARY TRAFFIC CONTROL DEVICES.
- THE CONTRACTOR SHALL BE RESPONSIBLE FOR VERIFYING ALL DIMENSIONS AND EXISTING CONDITIONS IN THE FIELD PRIOR TO CONSTRUCTION AND ORDERING MATERIALS.
- ANY SIGNS OR MAIL BOXES THAT ARE IN CONFLICT WITH THE IMPROVEMENTS SHALL BE REMOVED AND REPLACED IN ACCORDANCE WITH DEPARTMENT STANDARDS AND INCLUDED IN THE COST OF EXCAVATING AND GRADING EXISTING SHOULDERS.
- ANY SOIL DISTURBED AS A RESULT OF THIS PROJECT SHALL BE DISPOSED OF ONSITE AND NEATLY GRADED TO THE SATISFACTION OF THE ENGINEER AND INCLUDED IN THE COST OF EXCAVATING AND GRADING EXISTING SHOULDERS.
- BEFORE STARTING ANY EXCAVATION THE STATE ELECTRICAL MAINTENANCE CONTRACTOR AND THE IDOT BURBAU OF TRAFFIC SHALL BE CONTACTED FOR LOCATIONS OF IDOT LIGHTING, SURVEILLANCE AND TRAFFIC SIGNAL UNDERGROUND EQUIPMENT.
- BEFORE STARTING ANY EXCAVATIONS THE CONTRACTOR CURRENTLY INSTALLING THE NEW SURVEILLANCE SYSTEM UNDER CONTRACT 60E01 SHALL BE CONTACTED TO LOCATE PORTIONS OF THEIR SYSTEM ALREADY INSTALLED BUT NOT YET UNDER THE STATE MAINTENANCE AGREEMENT.
- FURNISHED EXCAVATION IS ANTICIPATED AT CAMERA SITES 18 AND 20. THE CONTRACTOR SHALL USE AS MUCH OF THE EXISTING MATERIAL AS POSSIBLE PRIOR TO USING FURNISHED EXCAVATION.



HIGHWAY STANDARDS

STANDARD NO.	DESCRIPTION
000001-06	STANDARD SYMBOLS, ABBREVIATIONS AND PATTERNS
630001-09	STEEL PLATE BEAM GUARDRAIL
630301-05	SHOULDER WIDENING FOR TYPE 1 (SPECIAL) GUARDRAIL TERMINALS
631011-07	TRAFFIC BARRIER TERMINAL, TYPE 2
635001-01	DELINEATORS
635006-03	REFLECTOR AND TERMINAL MARKER PLACEMENT
635011-02	REFLECTOR MARKER AND MOUNTING DETAILS
664001-02	CHAIN LINK FENCE
701001-02	OFF-RD OPERATIONS, 2L, 2W, MORE THAN 15' AWAY
701006-03	OFF-RD OPERATIONS, 2L, 2W, 15' TO 24" FROM PAVEMENT EDGE
701011-02	OFF-RD MOVING OPERATIONS, 2L, 2W, DAY ONLY
701101-02	OFF-RD OPERATIONS, MULTILANE, 15' (4.5m) TO 24" (600 mm) FROM PAVEMENT EDGE
701201-04	LANE CLOSURE, 2L, 2W, DAY ONLY, FOR SPEEDS ≥ 45 MPH
701301-04	LANE CLOSURE, 2L, 2W, SHORT TIME OPERATIONS
701306-03	LANE CLOSURE, 2L, 2W, SLOW MOVING OPERATIONS DAY ONLY, FOR SPEEDS ≥ 45 MPH
701311-03	LANE CLOSURE, 2L, 2W, MOVING OPERATIONS DAY ONLY
701326-04	LANE CLOSURE, 2L, 2W, PAVEMENT WIDENING, FOR SPEEDS ≥ 45 MPH
701901-01	TRAFFIC CONTROL DEVICES
720001-01	SIGN PANEL MOUNTING DETAILS
720006-02	SIGN PANEL ERECTION DETAILS

INDEX OF SHEETS

SHEET NO.	DESCRIPTION
1	TITLE SHEET
2	INDEX OF SHEETS, HIGHWAY STANDARDS, GENERAL NOTES AND COMMITMENTS
3	SUMMARY OF QUANTITIES
4	GENERAL LAYOUT
5 - 15	ROADWAY PLANS
16	DETAILS FOR DEPRESSED CURB AND GUTTER AND SHOULDER TREATMENT AT TBT TY 1 SPL (BD-34)
17	TRAFFIC CONTROL DETAILS FOR FREEWAY SINGLE & MULTI-LANE WEAVE (TC-09)
18	TRAFFIC CONTROL AND PROTECTION FOR SIDE ROADS, INTERSECTIONS, AND DRIVEWAYS (TC-10)
19	TRAFFIC CONTROL DETAILS FOR FREEWAY SHOULDER CLOSURES AND PARTIAL RAMP CLOSURES (TC-17)

COMMITMENTS

NO COMMITMENTS

COPYRIGHT © 2006 BY BAXTER & WOODMAN, INC.
 STATE OF ILLINOIS - PROFESSIONAL DESIGN FIRM
 LICENSE NO. 184-000121 - EXPIRES 4/30/2011
 7/20/2011 3:17:00 PM
 ...\\dot16\00053\W024-8&K.rtb1
 E:\C:\statal\lake\LDOT\00053\140-Design\W024-Gen-Note.rvt



DESIGNED - DJS	REVISED - 5-23-11 PER IDOT REVIEW
DRAWN - LKB	REVISED - 7-20-11 ADDENDUM 1
CHECKED - LDH	REVISED -
DATE - 5-03-11	FILE - 100153_W024-GEN-NOTE.shx

STATE OF ILLINOIS
DEPARTMENT OF TRANSPORTATION

INTERSTATE 55 - US 6 TO WEST OF INTERSTATE 294
GUARDRAIL IMPROVEMENTS
INDEX OF SHEETS, HIGHWAY STANDARDS, GENERAL NOTES AND COMMITMENTS

SCALE: STA. TO STA.

F.A.I. RTE.	SECTION	COUNTY	TOTAL SHEETS	SHEET NO.
55	2011-041-GRR	DUPAGE/WILL	19	2
				CONTRACT NO. 60P47
FED. ROAD DIST. NO. 1 (ILLINOIS)				

SUMMARY OF QUANTITIES			100% STATE URBAN	CONSTRUCTION TYPE CODE		
CODE NO.	ITEM DESCRIPTION	UNIT	TOTAL QUANTITY	WILL COUNTY 0021 QUANTITY	DUPAGE COUNTY 0021 QUANTITY	
* 20200600	EXCAVATING AND GRADING EXISTING SHOULDER	UNIT	31	13	18	
20100110	TREE REMOVAL (6 TO 15 UNITS DIAMETER)	UNIT	24	24		
21101615	TOPSOIL FURNISH AND PLACE, 4"	SQ YD	2,928	1,213	1,715	
20400800	FURNISHED EXCAVATION	CU YD	147		147	
25000210	SEEDING, CLASS 2A	ACRE	0.62	0.26	0.36	
25000400	NITROGEN FERTILIZER NUTRIENT	POUND	57	24	33	
25000500	PHOSPHORUS FERTILIZER NUTRIENT	POUND	57	24	33	
25000600	POTASSIUM FERTILIZER NUTRIENT	POUND	57	24	33	
25100630	EROSION CONTROL BLANKET	SQ YD	2,928	1,213	1,715	
* 48101620	AGGREGATE SHOULDERS, TYPE B 10"	SQ YD	1,214	444	770	
* 48102100	AGGREGATE WEDGE SHOULDER, TYPE B	TON	185	185	-	
63000001	STEEL PLATE BEAM GUARDRAIL, TYPE A, 6 FOOT POSTS	FOOT	1,412.5	537.5	875.0	
63000003	STEEL PLATE BEAM GUARDRAIL, TYPE A, 9 FOOT POSTS	FOOT	687.5	212.5	475.0	
63100045	TRAFFIC BARRIER TERMINAL, TYPE 2	EACH	6	3	3	
63100167	TRAFFIC BARRIER TERMINAL, TYPE 1 (SPECIAL) TANGENT	EACH	9	5	4	
63200310	GUARDRAIL REMOVAL	FOOT	150	-	150	
67000400	ENGINEER'S FIELD OFFICE, TYPE A	CAL MO	4	2	2	
67100100	MOBILIZATION	L SUM	1	0.5	0.5	
78200410	GUARDRAIL MARKERS, TYPE A	EACH	36	16	20	
78201000	TERMINAL MARKER - DIRECT APPLIED	EACH	9	5	4	
* X2020110	GRADING AND SHAPING SHOULDERS	UNIT	66	66	-	
X2503100	MOWING	UNIT	265	110	155	
X6640306	CHAIN LINK FENCE TO BE RELOCATED	FOOT	695	-	695	
X7011015	TRAFFIC CONTROL AND PROTECTION (EXPRESSWAYS)	L SUM	1	0.5	0.5	

* INDICATES SPECIALTY ITEM

COPYRIGHT © 2010 BY BAXTER & WOODMAN, INC. 100% STATE URBAN 100% STATE URBAN
 LICENSE NO. 184-00121 - EXPIRES 4/30/2013
 23JLD
 5/27/2011 8:03:53 AM
 I:\PROJECTS\100153-W024-SMOTY.dgn



DESIGNED - DJS	REVISED - 5-23-11 PER IDOT REVIEW
DRAWN - LKB	REVISED -
CHECKED - LDH	REVISED -
DATE - 5-03-11	FILE - 100153-W024-SMOTY.dgn

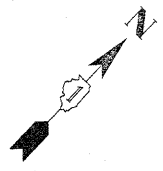
**STATE OF ILLINOIS
DEPARTMENT OF TRANSPORTATION**

**INTERSTATE 55 - US 6 TO WEST OF INTERSTATE 294
GUARDRAIL IMPROVEMENTS
SUMMARY OF QUANTITIES**

SCALE: STA. TO STA.

Rev. 7-26-11

F.A.I. RTE.	SECTION	COUNTY	TOTAL SHEETS	SHEET NO.
55	2011-041-GRR	DUPAGE/WILL	19	3
FED. ROAD DIST. NO. 1 ILLINOIS			CONTRACT NO. 60P47	

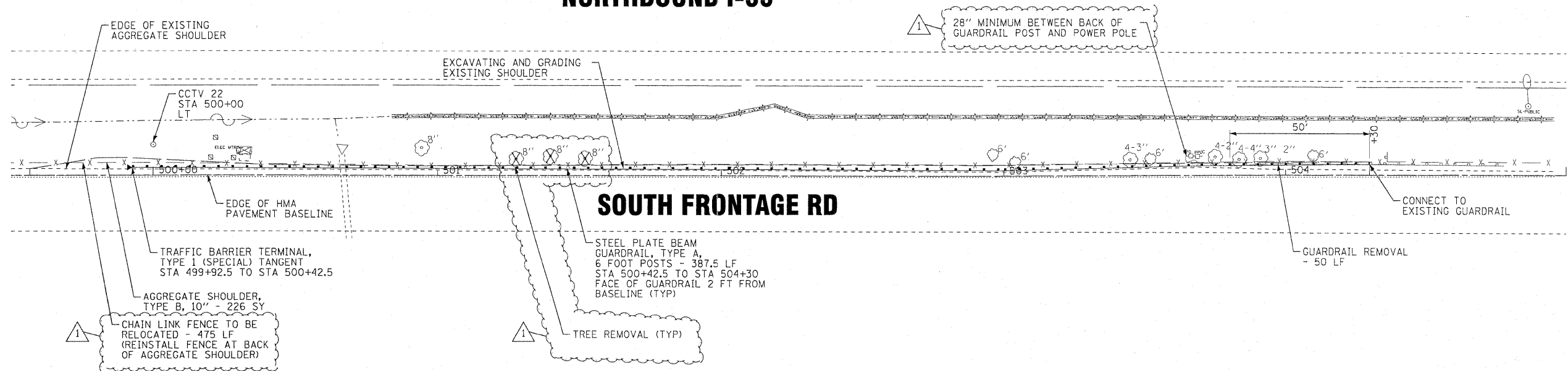


NORTH FRONTAGE RD

SOUTHBOUND I-55

NORTHBOUND I-55

SOUTH FRONTAGE RD



COPYRIGHT © 2011 BY BAXTER & WOODMAN, INC. ALL RIGHTS RESERVED. PROJECT NO. 100153-W024-PLAN4.dgn
 LICENSE NO. 041-00121, EXPIRES 4/30/2011
 DATE PLOTTED: 5/3/11 2:58:22 PM
 FILE: I:\Projects\100153-W024-PLAN4.dgn



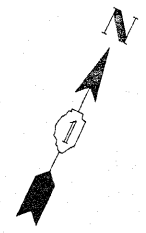
DESIGNED - AMM	REVISED - 5-23-11 PER IDOT REVIEW
DRAWN - LKB	REVISED - 7-20-11 ADDENDUM 1
CHECKED - LDH	REVISED -
DATE - 5-03-11	FILE - 100153-W024-PLAN4.dgn

**STATE OF ILLINOIS
DEPARTMENT OF TRANSPORTATION**

**INTERSTATE 55 - US 6 TO WEST OF INTERSTATE 294
GUARDRAIL IMPROVEMENTS
CAMERA ST 22 - 87th ST**

SCALE: 1"=20' STA. 500+00 TO STA. 505+00

F.A.I. RTE.	SECTION	COUNTY	TOTAL SHEETS	SHEET NO.
55	2011-041-GRR	DUPAGE/WILL	19	9
CONTRACT NO. 60P47			FED. ROAD DIST. NO. 1 ILLINOIS	



PORTSMOUTH DRIVE

NORTH FRONTAGE ROAD

SOUTHBOUND I-55

NORTHBOUND I-55

SOUTH FRONTAGE ROAD

STEEL PLATE BEAM GUARDRAIL,
TYPE A, 9 FOOT POSTS - 137.5 LF
STA 604+18 TO STA 605+55.5
FACE OF GUARDRAIL 4 FT FROM BASELINE

EXISTING WHITE PAVEMENT
MARKING EDGELINE BASELINE

CONNECT TO EXISTING
GUARDRAIL

GUARDRAIL REMOVAL - 50'

EXCAVATING AND GRADING
EXISTING SHOULDER

CCTV 20
STA 606+00
RT

AGGREGATE SHOULDER,
TYPE B, 10" - 128 SY

CHAIN LINK FENCE TO
BE RELOCATED - 220 LF
(REINSTALL FENCE AT BACK
OF AGGREGATE SHOULDER)

TRAFFIC BARRIER TERMINAL,
TYPE 1 (SPECIAL) TANGENT
STA 605+55.5 TO STA 606+05.5

DESIGNED BY: BAXTER & WOODMAN, INC.
 DRAWN BY: UKB
 CHECKED BY: LDH
 DATE: 5-03-11
 REVISED: 5-23-11 PER IDOT REVIEW
 REVISED: 7-20-11 ADDENDUM 1
 FILE: 100153-W024-PLAN6.dgn
 SCALE: 1"=20'
 STA. 601+00 TO STA. 607+00
 F.A.I. RTE. 55 SECTION 2011-041-GRR COUNTY DUPAGE/WILL TOTAL SHEETS 19 SHEET NO. 11
 CONTRACT NO. 60P47
 FED. ROAD DIST. NO. 1 ILLINOIS



DESIGNED -	AMM	REVISED -	5-23-11 PER IDOT REVIEW
DRAWN -	UKB	REVISED	7-20-11 ADDENDUM 1
CHECKED -	LDH	REVISED -	
DATE -	5-03-11	FILE -	100153-W024-PLAN6.dgn

**STATE OF ILLINOIS
DEPARTMENT OF TRANSPORTATION**

**INTERSTATE 55 - US 6 TO WEST OF INTERSTATE 294
GUARDRAIL IMPROVEMENTS
CAMERA ST 20 - PORTSMOUTH DRIVE**

F.A.I. RTE.	SECTION	COUNTY	TOTAL SHEETS	SHEET NO.
55	2011-041-GRR	DUPAGE/WILL	19	11
CONTRACT NO. 60P47				
FED. ROAD DIST. NO. 1 ILLINOIS				