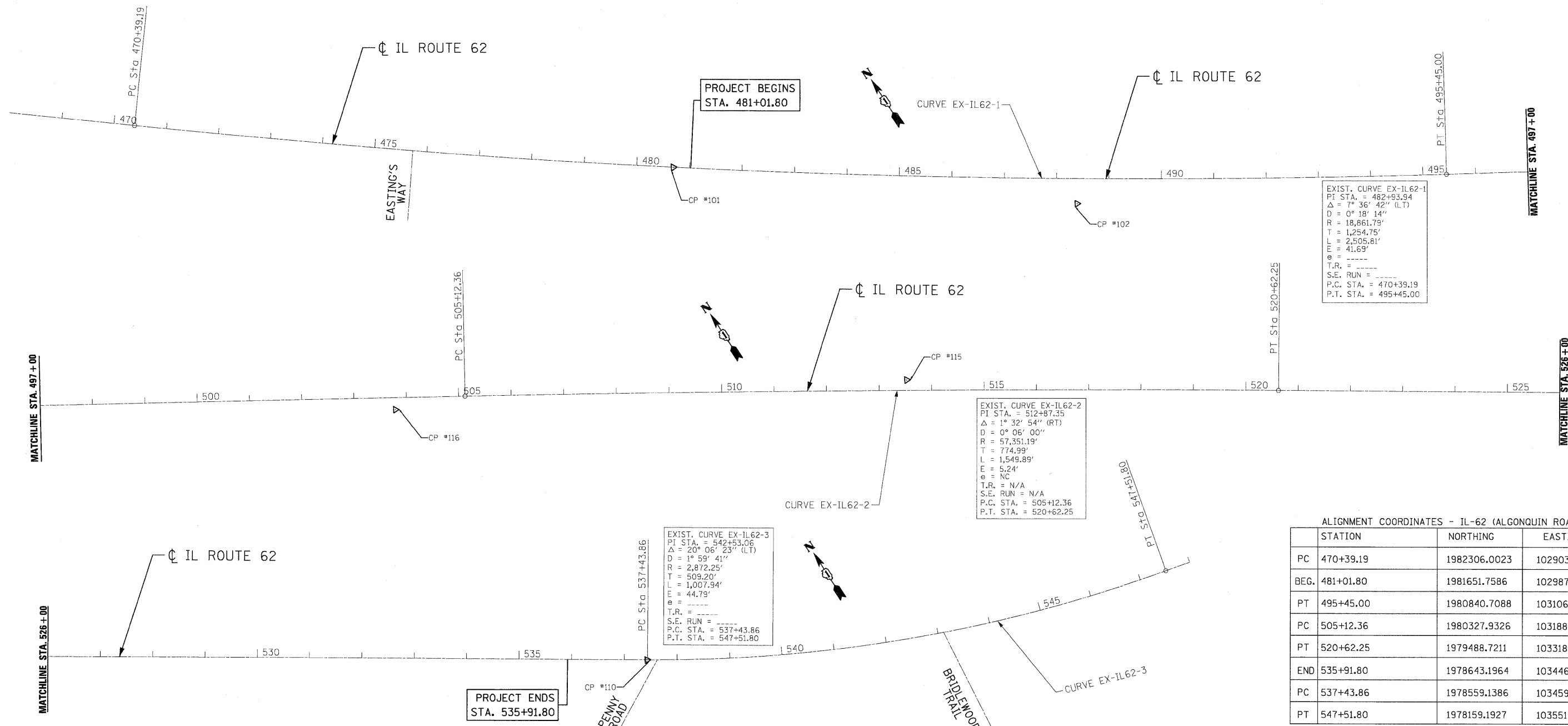


PLAN	SURVEYED	DATE
NO.	BY	
NOTE BOOK	PLOTTED	
NO.	CHECKED	
	RT. OF WAY CHECKED	
	PAID FILE NAME	

PLAN	SURVEYED	DATE
NO.	BY	
NOTE BOOK	PLOTTED	
NO.	CHECKED	
	RT. OF WAY CHECKED	
	PAID FILE NAME	



EXIST. CURVE EX-IL62-1
 PI STA. = 482+93.94
 Δ = 7° 36' 42" (LT)
 D = 0° 18' 14"
 R = 18,861.79'
 T = 1,254.75'
 PF = 2,505.81'
 e = 41.65'
 T.R. = ----
 S.E. RUN = ----
 P.C. STA. = 470+39.19
 P.T. STA. = 495+45.00

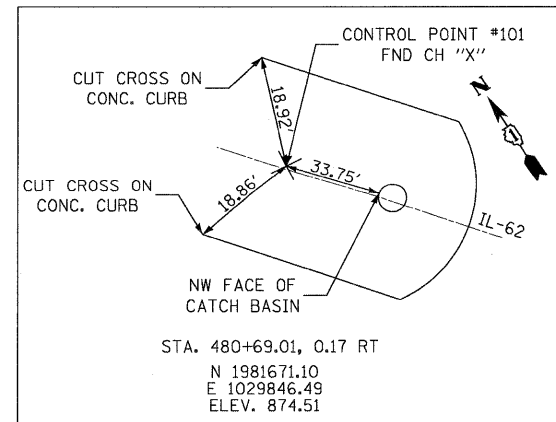
EXIST. CURVE EX-IL62-2
 PI STA. = 512+87.35
 Δ = 1° 32' 54" (RT)
 D = 0° 06' 00"
 R = 57,351.19'
 T = 774.99'
 L = 1,549.89'
 E = 5.24'
 e = NC
 T.R. = N/A
 S.E. RUN = N/A
 P.C. STA. = 505+12.36
 P.T. STA. = 520+62.25

EXIST. CURVE EX-IL62-3
 PI STA. = 542+53.06
 Δ = 20° 06' 23" (LT)
 D = 1° 59' 41"
 R = 2,872.25'
 T = 509.20'
 L = 1,007.94'
 E = 44.79'
 e = ----
 T.R. = ----
 S.E. RUN = ----
 P.C. STA. = 537+43.86
 P.T. STA. = 547+51.80

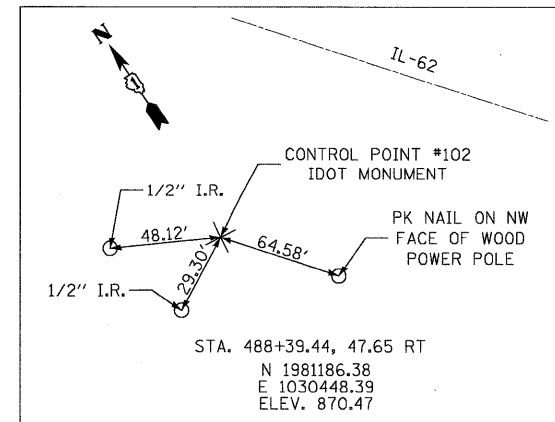
ALIGNMENT COORDINATES - IL-62 (ALGONQUIN ROAD)

STATION	NORTHING	EASTING
PC 470+39.19	1982306.0023	1029035.8304
BEG. 481+01.80	1981651.7586	1029872.9729
PT 495+45.00	1980840.7088	1031066.2876
PC 505+12.36	1980327.9326	1031886.5676
PT 520+62.25	1979488.7211	1033189.5353
END 535+91.80	1978643.1964	1034464.1376
PC 537+43.86	1978559.1386	1034590.8520
PT 547+51.80	1978159.1927	1035510.4150

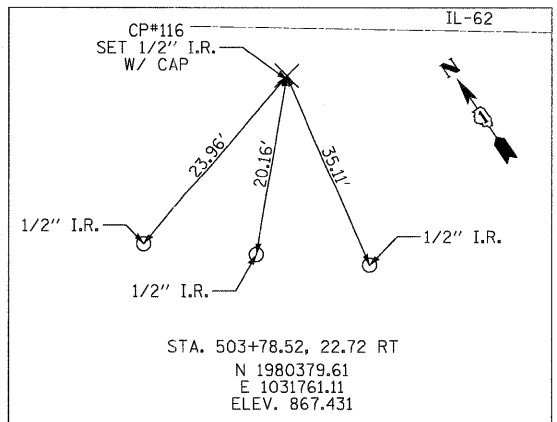
CONTROL POINT #101



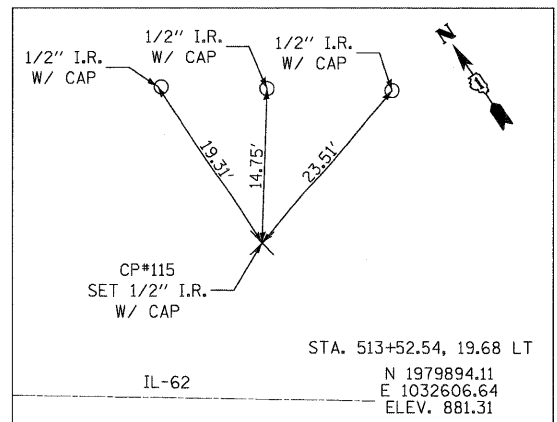
CONTROL POINT #102



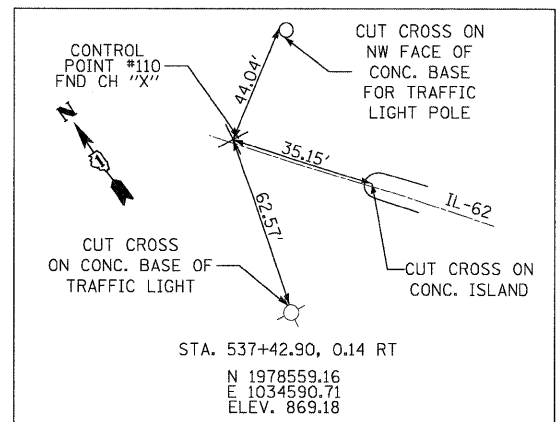
CONTROL POINT #116



CONTROL POINT #115



CONTROL POINT #110



FILE NAME = ...\\D160P52-sh1-atb.01.dgn



DESIGNED	ADW	REVISED	-
DRAWN	GEW	REVISED	-
CHECKED	RJD	REVISED	-
DATE	MAY 20, 2011	REVISED	-

STATE OF ILLINOIS
 DEPARTMENT OF TRANSPORTATION

IL RTE 62 (ALGONQUIN RD.) FROM EASTING'S WAY TO PENNY RD.
 ALIGNMENT & TIES
 SCALE: 1" = 100' SHEET NO. 1 OF 1 SHEETS STA. 481+01.80 TO STA. 535+91.80

F.A.P. RTE.	SECTION	COUNTY	TOTAL SHEETS	SHEET NO.
339	2011-043-DTR	COOK	21	5
				CONTRACT NO. 60P52
ILLINOIS FED. AID PROJECT				