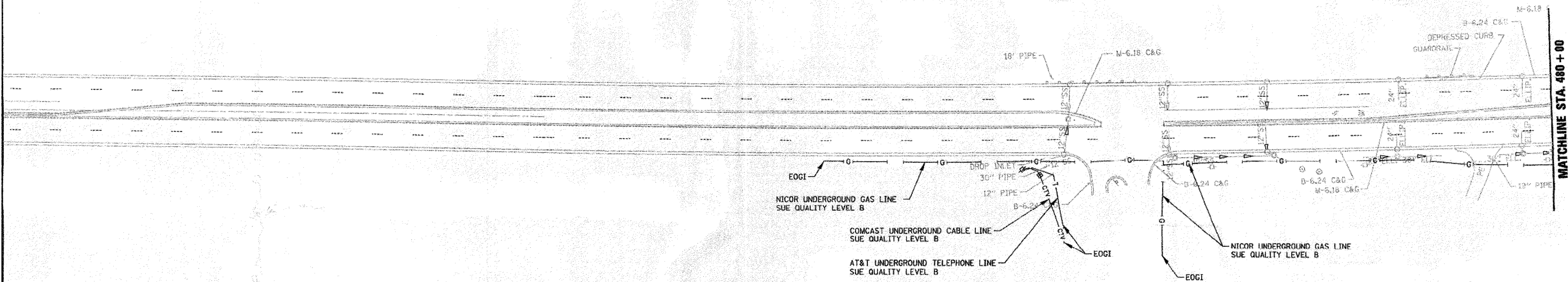
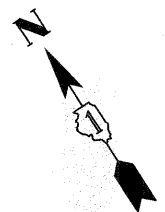


PLAN	SURVEYED	DATE
	ALIGNMENT CHECKED	
	RT. OF WAY CHECKED	
	NO. _____	
	BY _____	
	DATE _____	

PLAN	SURVEYED	DATE
	ALIGNMENT CHECKED	
	RT. OF WAY CHECKED	
	NO. _____	
	BY _____	
	DATE _____	



STATE OF ILLINOIS )  
COUNTY OF COOK ) S.S.

UTILITIES SHOWN HEREON HAVE BEEN INVESTIGATED BY  
USE IN ACCORDANCE WITH SUE INDUSTRY STANDARDS QUALITY  
LEVEL B (QLB). ALL OTHER INFORMATION SHOWN HAS BEEN  
PROVIDED BY OTHERS.

FIELD WORK WAS PERFORMED BETWEEN THE 7TH OF JULY AND  
14TH DAY OF JULY, A.D., 2010.

IN WITNESS WHEREOF, I HAVE HEREUNTO SET MY HAND AND SEAL  
THIS 5TH DAY OF AUGUST A.D., 2010. CHICAGO, IL.



*Steven M. Rienks*  
STEVEN M. RIENKS - ILLINOIS PROFESSIONAL  
ENGINEER NUMBER 62-044619  
MY LICENSE EXPIRES 11/30/2011

**AMERICAN**  
SURVEYING & ENGINEERING, P.C.  
SURVEYORS - ENGINEERS  
GEODESISTS - MAPPING SCIENTISTS  
Chicago: 312-271-2000 / Fax 312-271-2002  
Dixons: 815-289-9231 / Fax 815-289-6277  
Aurora: 630-897-4105 / Fax 630-897-4121  
Illinois Professional Design Firm No. 184-003192

**LEGEND**

—T—	EXISTING UNDERGROUND TELEPHONE
—W—	EXISTING UNDERGROUND WATER
—E—	EXISTING UNDERGROUND ELECTRIC
—G—	EXISTING UNDERGROUND GAS
—C/TV—	EXISTING UNDERGROUND CABLE TV
EOGI	END OF GEOPHYSICAL INFORMATION

FILE NAME =  
...N0160P52-100T SUE\_01.dgn



DESIGNED	RJD	REVISED	-
DRAWN	GEW	REVISED	-
CHECKED	TWL	REVISED	-
DATE	MAY 20, 2011	REVISED	-

STATE OF ILLINOIS  
DEPARTMENT OF TRANSPORTATION

IL RTE 62 (ALGONQUIN RD.) FROM EASTING'S WAY TO PENNY RD.  
SUE INVESTIGATION OF UNDERGROUND UTILITIES  
SCALE: 1"=50' SHEET NO. 1 OF 6 SHEETS STA. TO STA. 480+00

F.A.P. RTE.	SECTION	COUNTY	TOTAL SHEETS	SHEET NO.
339	2011-043-DTR	COOK	20	8
				CONTRACT NO. 60P52
ILLINOIS FED. AID PROJECT				