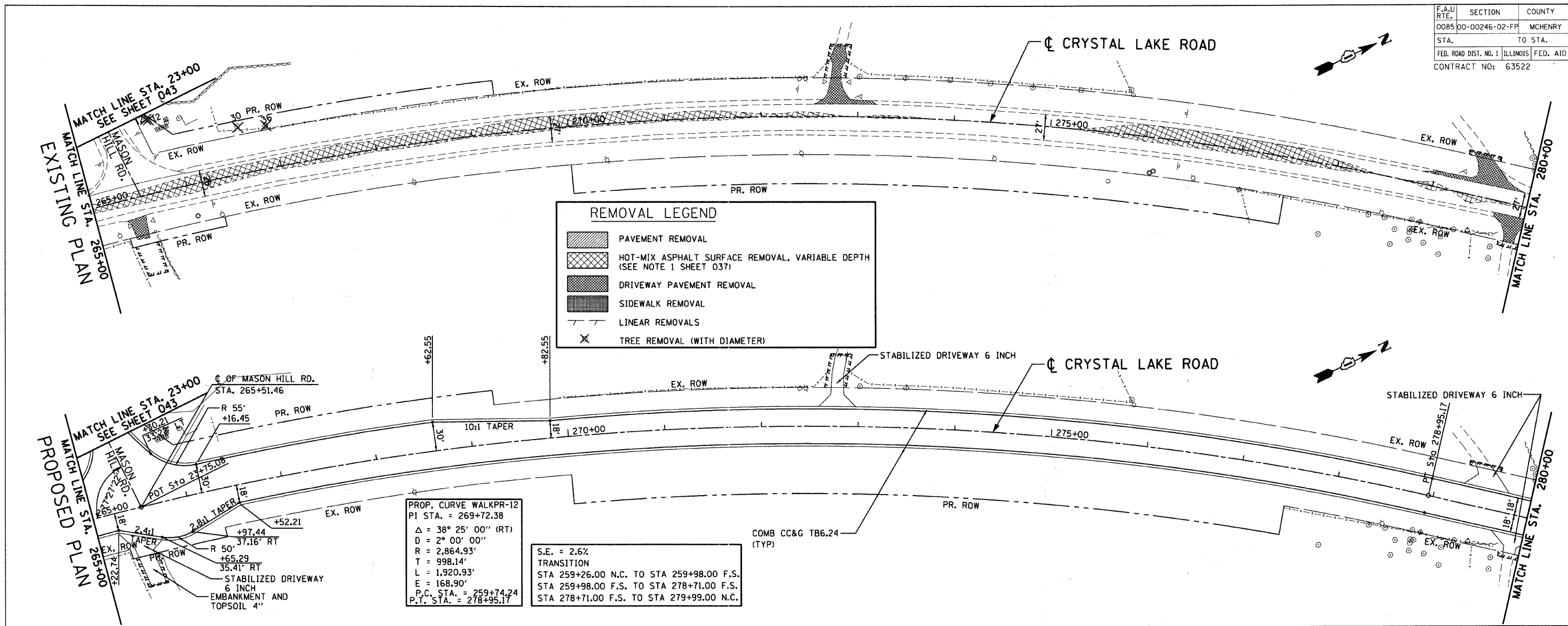


F.A.U. SECTION COUNTY TOTAL SHEETS SHEET NO.
0085 00-00246-02-FP MCHENRY 292 040
STA. TO STA.
FED. ROAD DIST. NO. 1 ILLINOIS FED. AID PROJECT
CONTRACT NO: 63522

PLAN REVIEWED, PLOTTED, ALIGNED, CHECKED, ADDED FILE NAME. DATE: 10/15/11. 1:24.66789101112.13.14.15.16.17.18.19.20.21.22.23.24.25.26.27.28.29.30.31.32.33.34.35.36.37.38.39.40.41.42.43.44.45.46.47.48.49.50.51.52.53.54.55.56.57.58.59.60.61.62.63.

PLAN	NO.
NOTE BOOK	NO.

PROFILE	NO.
GRADES	NO.
STRUCTURE	NO.

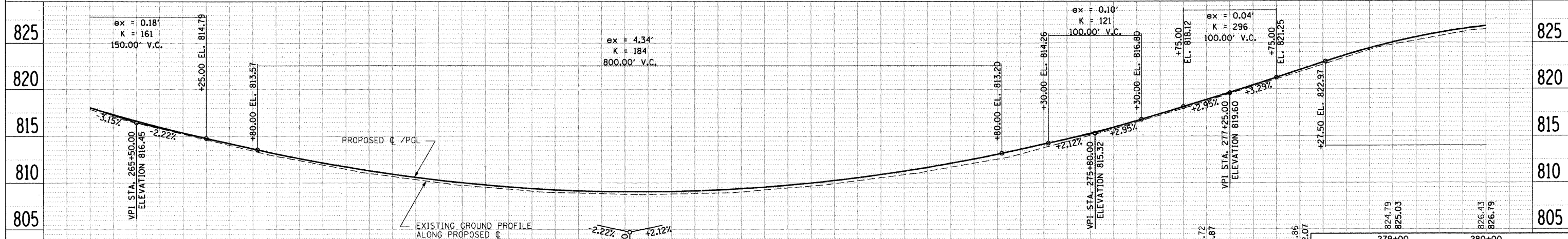


REMOVAL LEGEND

- PAVEMENT REMOVAL
- HOT-MIX ASPHALT SURFACE REMOVAL, VARIABLE DEPTH (SEE NOTE 1 SHEET 037)
- DRIVEWAY PAVEMENT REMOVAL
- SIDEWALK REMOVAL
- LINEAR REMOVALS
- TREE REMOVAL (WITH DIAMETER)

PROP. CURVE WALKPR-12
 PI STA. = 269+72.38
 $\Delta = 38^\circ 25' 00''$ (RT)
 $D = 2^\circ 00' 00''$
 $R = 2,864.93'$
 $T = 998.14'$
 $L = 1,920.93'$
 $E = 168.90'$
 P.C. STA. = 259+74.24
 P.T. STA. = 278+95.17

S.E. = 2.6%
 TRANSITION
 STA 259+26.00 N.C. TO STA 259+98.00 F.S.
 STA 259+98.00 F.S. TO STA 278+71.00 F.S.
 STA 278+71.00 F.S. TO STA 279+99.00 N.C.



REVISIONS	
NAME	DATE

MCHENRY COUNTY DIVISION OF TRANSPORTATION
 WALKUP ROAD F.A.U. 0085

ROADWAY PLAN & PROFILE
 CRYSTAL LAKE ROAD
 STA 265+00 TO STA 280+00

SCALE: VERT. 1" = 5'
 DATE: 04/15/11
 DRAWN BY: KV
 CHECKED BY: MCD

TENG
TENG & ASSOCIATES, INC.
 ENGINEERS/ARCHITECTS/PLANNERS
 805 N. MICHIGAN AVE. CHICAGO, IL 60610
 TELEPHONE: 312.644.0000