

DATE: _____ BY: _____

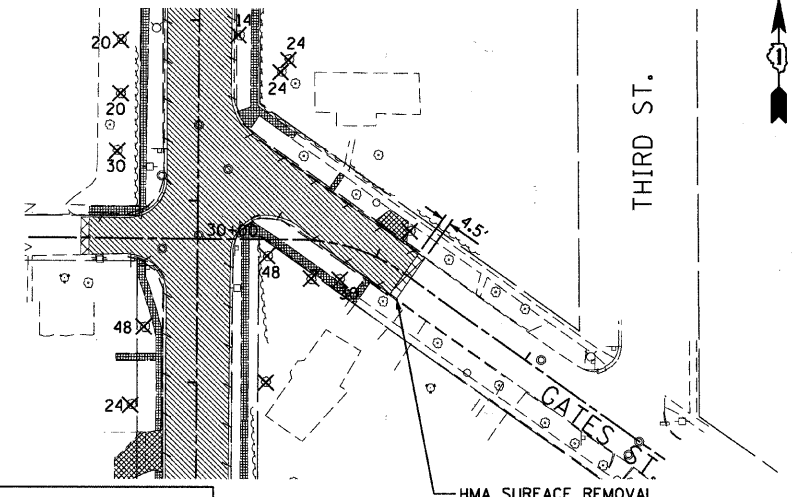
DATE: _____ BY: _____

DATE: _____ BY: _____

DATE: _____ BY: _____

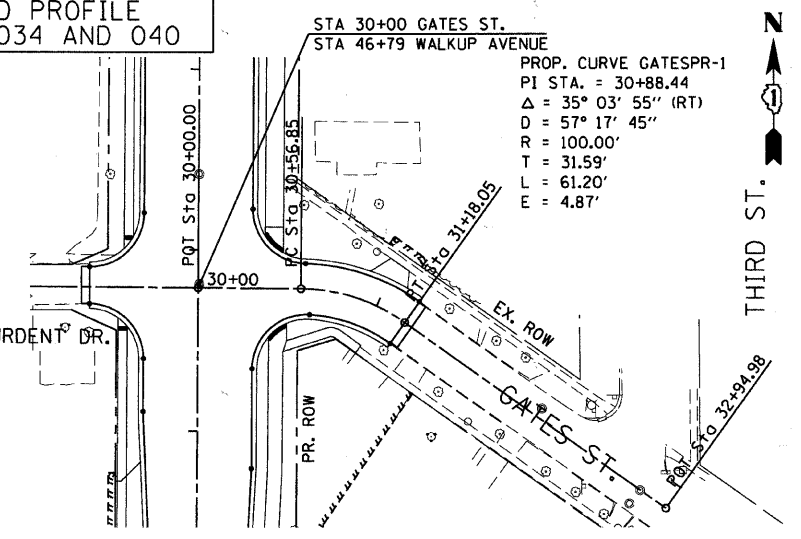
SURVEYED BY: _____
 ALIGNED BY: _____
 CHECKED BY: _____
 DATE: _____

EXISTING PLAN



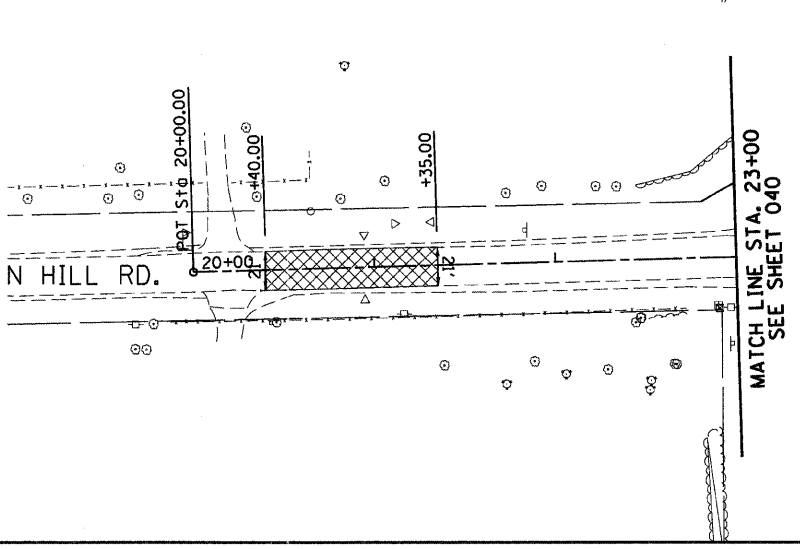
FOR PLAN CALLOUTS
 SEE WALKUP ROAD
 PLAN AND PROFILE
 SHEETS 034 AND 040

PROPOSED PLAN

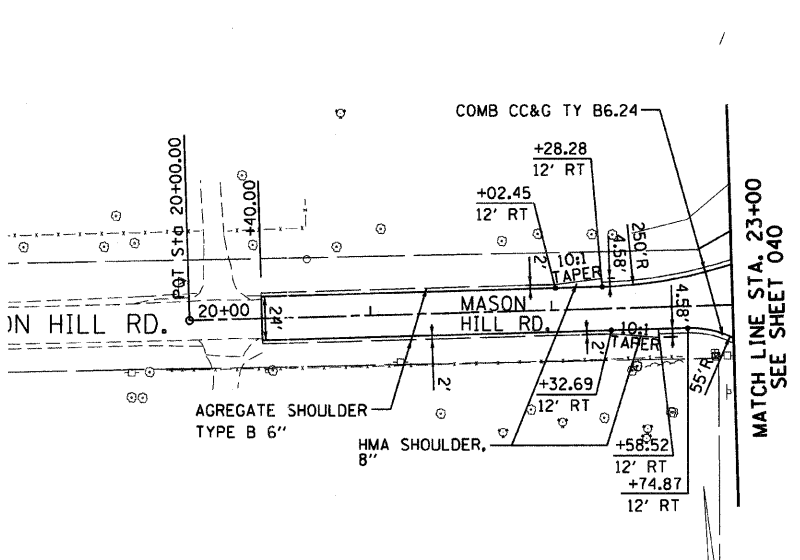


PROP. CURVE GATESPR-1
 PI STA. = 30+88.44
 $\Delta = 35^{\circ} 03' 55''$ (RT)
 D = 57' 17' 45"
 R = 100.00'
 T = 31.59'
 L = 61.20'
 E = 4.87'

EXISTING PLAN

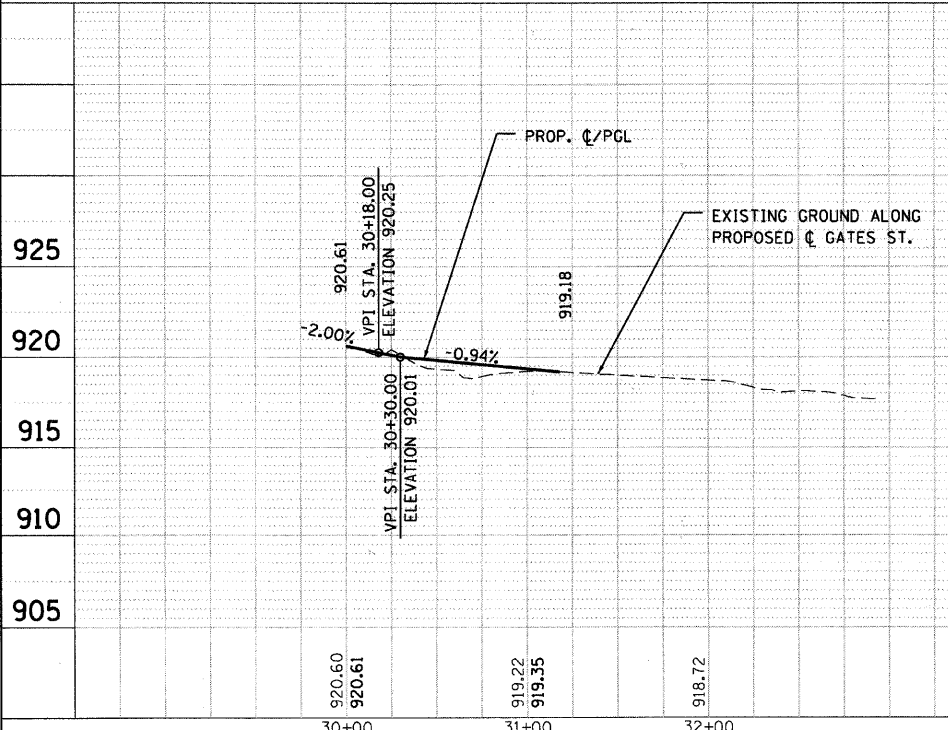


PROPOSED PLAN



REMOVAL LEGEND

- PAVEMENT REMOVAL
- HOT-MIX ASPHALT SURFACE REMOVAL, VARIABLE DEPTH
(SEE NOTE 1 SHEET 037)
- DRIVEWAY PAVEMENT REMOVAL
- SIDEWALK REMOVAL
- LINEAR REMOVALS
- TREE REMOVAL (WITH DIAMETER)



REVISIONS	
NAME	DATE

MCHENRY COUNTY DIVISION OF TRANSPORTATION
 WALKUP ROAD F.A.U. 0085

**ROADWAY PLAN & PROFILE
 GATES STREET &
 MASON HILL ROAD**

SCALE: VERT. 1" = 5'
 HORIZ. 1" = 50'
 DATE: 04/15/11

DRAWN BY: RJS
 CHECKED BY: MCD

TENG

TENG & ASSOCIATES, INC.
 ENGINEERS/ARCHITECTS/PLANNERS
 26 N MICHIGAN AVE CHICAGO, IL 60611
 TELEPHONE: 312.526.1000

F.A.U. RTE.	SECTION	COUNTY	TOTAL SHEETS	SHEET NO.
0085	00-00246-02-FF	MCHENRY	292	043
STA. TO STA.		FED. ROAD DIST. NO. 1 ILLINOIS FED. AID PROJECT		
CONTRACT NO:		63522		