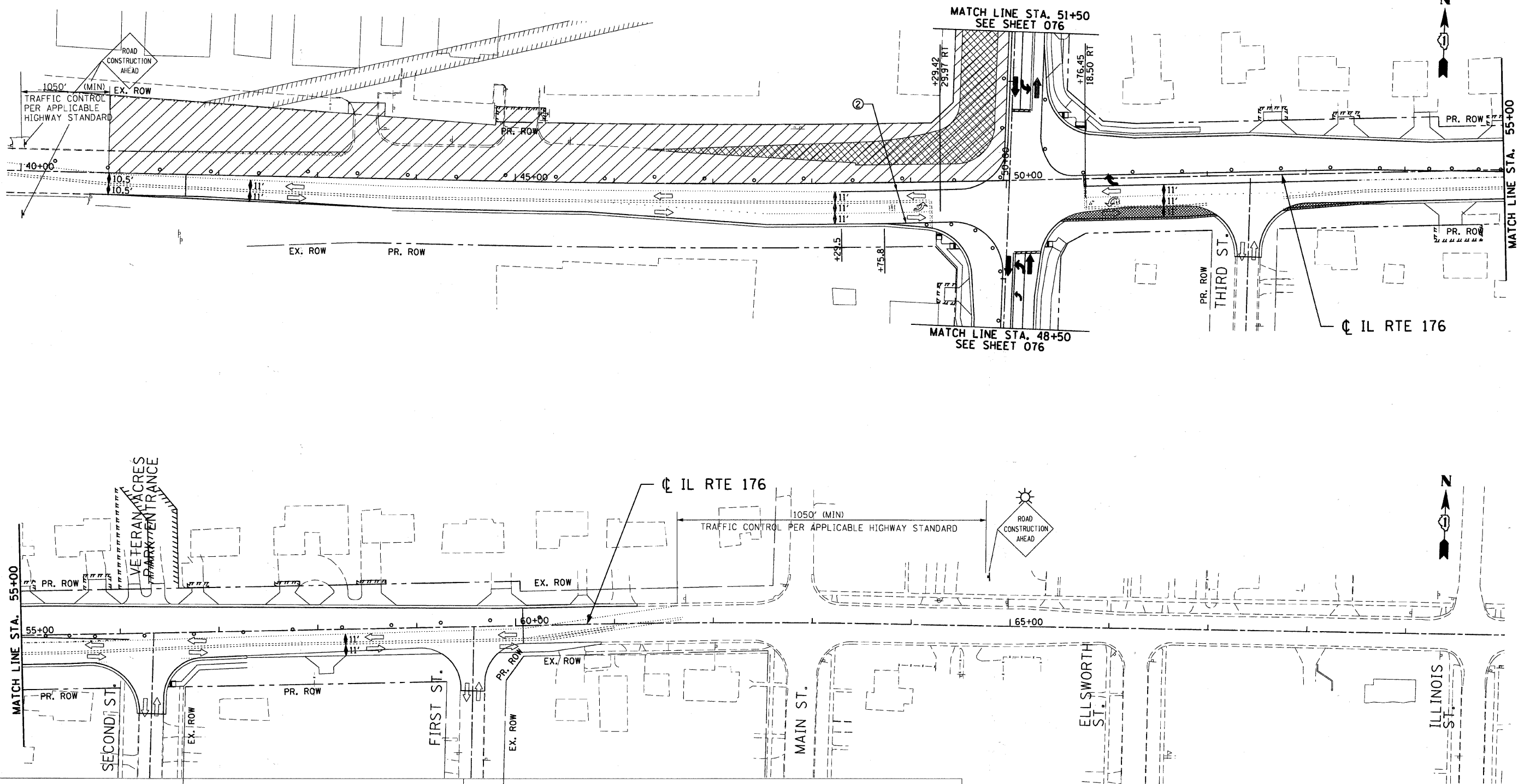


| |
|---|
| F.A.U. SECTION COUNTY TOTAL SHEETS SHEET NO. |
| 0085 00-00246-02-FP MCHENRY 292 075 |
| STA. TO STA. |
| FED. ROAD DIST. NO. 1 ILLINOIS FED. AID PROJECT |
| CONTRACT NO: 63522 |



LEGEND

- WORK AREA
- TEMPORARY PAVEMENT
- TEMPORARY PAVEMENT FROM PREVIOUS STAGE
- BARRICADE, TYPE III, W/ TY A FLASHER
- PREVIOUS TRAFFIC PATTERN
- PR TRAFFIC PATTERN

- SIGN
- VERTICAL PANEL W/ STEADY BURNING LIGHT
- DRUMS WITH STEADY BURNING LIGHT @ 50' C-C
- TYPE B MONODIRECTIONAL FLASHING LIGHT

PAVEMENT MARKING LEGEND

- ① TEMPORARY PAVEMENT MARKING LETTERS AND SYMBOLS
- ② TEMPORARY PAVEMENT MARKING -LINE 4 Inch (WHITE)
- ③ TEMPORARY PAVEMENT MARKING -LINE 4 Inch (YELLOW)
- ④ TEMPORARY PAVEMENT MARKING -LINE 6 Inch (WHITE)
- ⑤ TEMPORARY PAVEMENT MARKING -LINE 8 Inch (YELLOW)
- ⑥ TEMPORARY PAVEMENT MARKING -LINE 12 Inch (YELLOW)
- ⑦ TEMPORARY PAVEMENT MARKING -LINE 24 Inch (WHITE)

| REVISIONS | |
|-----------|------|
| NAME | DATE |
| | |
| | |
| | |
| | |
| | |

MCHENRY COUNTY DIVISION OF TRANSPORTATION
WALKUP ROAD F.A.U. 0085

**MOT & STAGE 3 CONSTRUCTION
ILLINOIS ROUTE 176
STA 40+00 TO STA 70+00**

SCALE: 1" = 50'
DATE: 06/10/11
DRAWN BY: CC
CHECKED BY: KA



TENG & ASSOCIATES, INC.
ENGINEERS/ARCHITECTS/PLANNERS
285 N. HICKORY AVE. CHICAGO, IL 60611
TELEPHONE: 312.587.0000

\\V:\S-084\MMVAULT\ID-TRANS_07\2202\300-03\CIVIL\CAD\02 CONTRACT\17A_TENG_SHEET\M102A003.DWG, \\V:\S-084\MMVAULT\ID-TRANS_07\2202\300-03\CIVIL\CAD\02 CONTRACT\17A_TENG_SHEET\M102A002.DWG, \\V:\S-084\MMVAULT\ID-TRANS_07\2202\300-03\CIVIL\CAD\02 CONTRACT\17A_TENG_SHEET\M102A001.DWG, \\V:\S-084\MMVAULT\ID-TRANS_07\2202\300-03\CIVIL\CAD\02 CONTRACT\17A_TENG_SHEET\M102A007.DWG, \\V:\S-084\MMVAULT\ID-TRANS_07\2202\300-03\CIVIL\CAD\02 CONTRACT\17A_TENG_SHEET\M102A003.DWG, \\V:\S-084\MMVAULT\ID-TRANS_07\2202\300-03\CIVIL\CAD\02 CONTRACT\17A_TENG_SHEET\M102A002.DWG, \\V:\S-084\MMVAULT\ID-TRANS_07\2202\300-03\CIVIL\CAD\02 CONTRACT\17A_TENG_SHEET\M102A001.DWG, \\V:\S-084\MMVAULT\ID-TRANS_07\2202\300-03\CIVIL\CAD\02 CONTRACT\17A_TENG_SHEET\M102A007.DWG