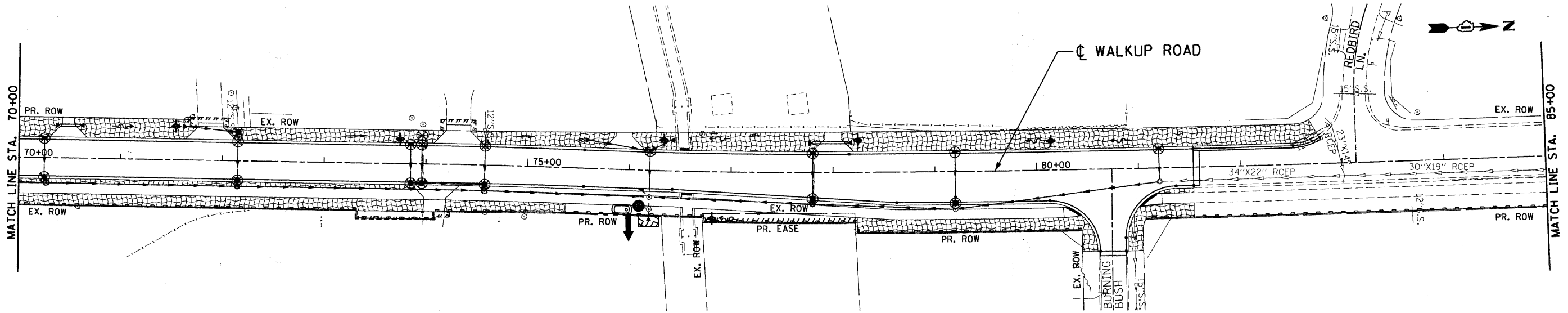
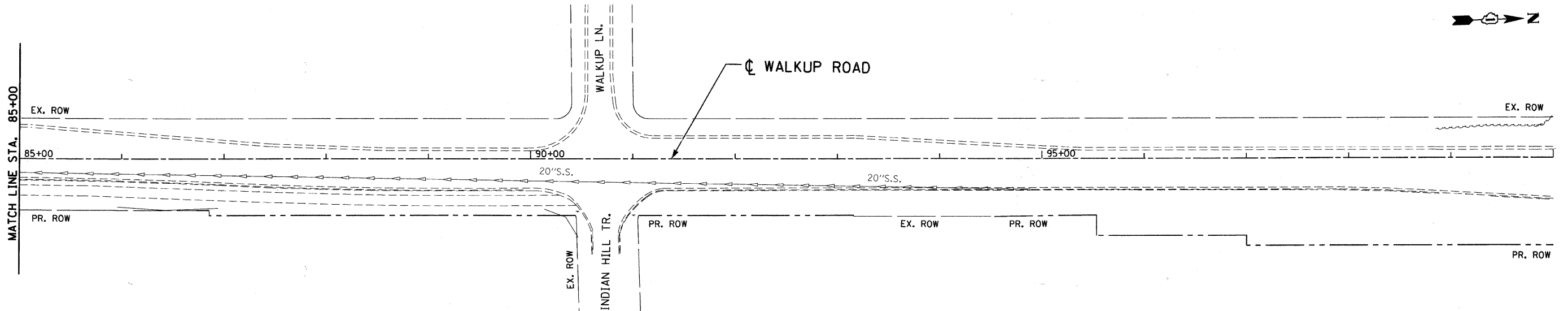


F.A.U. RTE.	SECTION	COUNTY	TOTAL SHEETS	SHEET NO.
0085	00-00246-02-FP	MCHENRY	292	083
STA.		TO STA.		
FED. ROAD DIST. NO. 1		ILLINOIS FED. AID PROJECT		
CONTRACT NO: 63522				



LEGEND SEE SCHEDULE OF QUANTITIES FOR EROSION & SEDIMENT CONTROL DETAILS

	TREE TRUNK PROTECTION		INLET FILTER
	TEMPORARY EROSION CONTROL SEEDING		DRAINAGE OUTLET
	WETLAND		TEMPORARY DITCH CHECK
	STONE RIPRAP		PERIMETER EROSION BARRIER
			TEMPORARY SEDIMENT BASIN (5'W X 10'L X 2'D) & AGGREGATE (EROSION CONTROL) AT LIP OF BASIN



REVISIONS	
NAME	DATE

MCHENRY COUNTY DIVISION OF TRANSPORTATION
WALKUP ROAD F.A.U. 0085

EROSION & SEDIMENT CONTROL WALKUP ROAD STA 70+00 TO STA 100+00

SCALE: 1" = 50' DRAWN BY: LK
DATE: 04/15/11 CHECKED BY: TL

TENG TENG & ASSOCIATES, INC.
ENGINEERING ARCHITECTURE PLANNING
815 N. MICHIGAN AVE. CHICAGO, IL 60611
TELEPHONE: 312/467-8000

\AL\021024002.DGN ... \EC021024002.DGN ... \PI\021024002.DGN ... \SEC021024002.DGN ... \VT021024006.DGN ... \VT021024002.DGN ... \UD021024002.DGN ...
 4/4 20/15/11/11 12 13 14 15 16 17 18 19 20 21 22 23 24 25 26 27 28 29 30 31 32 33 34 35 36 37 38 39 40 41 42 43 44 45 46 47 48 49 50 51 52 53 54 55 56 57 58 59 60 61 62 63