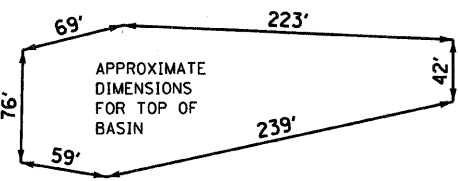
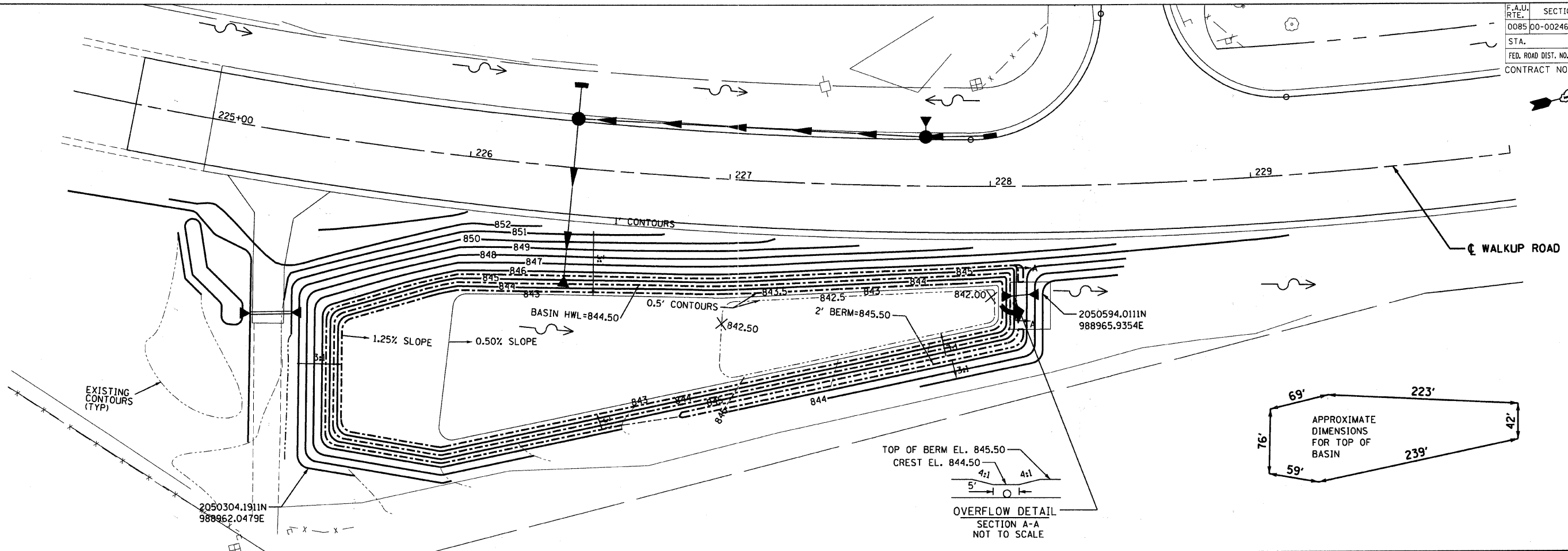
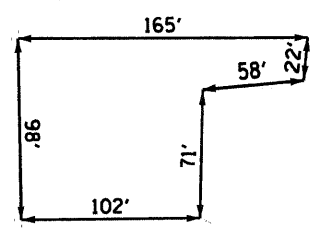
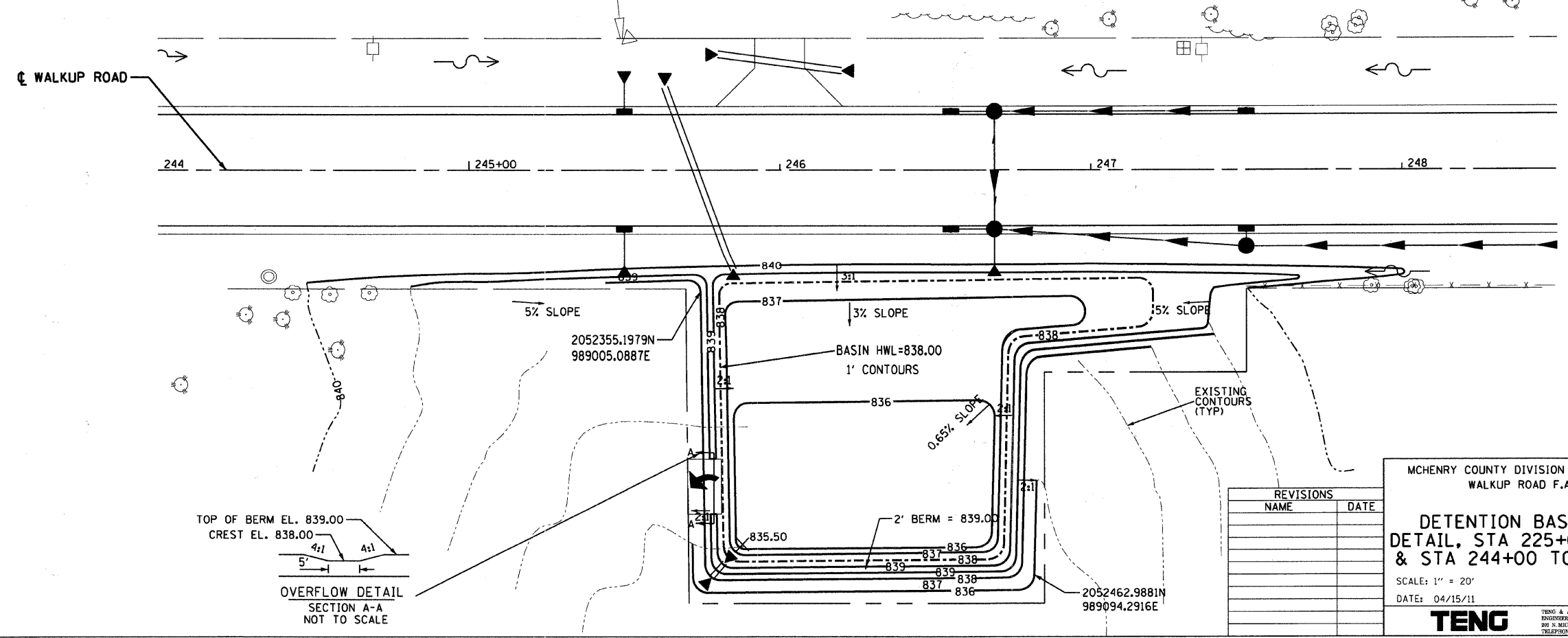


F.A.U. RTE.	SECTION	COUNTY	TOTAL SHEETS	SHEET NO.
0085	00-00246-02-FP	MCHENRY	292	109
STA.	TO STA.			
FED. ROAD DIST. NO. 1		ILLINOIS	FED. AID PROJECT	
CONTRACT NO: 63522				

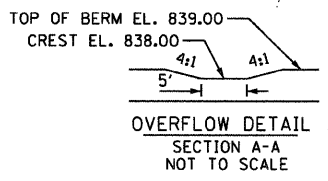


• SEE CROSS SECTIONS FOR ADDITIONAL DETAILS

• SEE CROSS SECTIONS FOR ADDITIONAL DETAILS



APPROXIMATE DIMENSIONS FOR TOP OF BASIN



REVISIONS	
NAME	DATE

MCHENRY COUNTY DIVISION OF TRANSPORTATION
WALKUP ROAD F.A.U. 0085

**DETENTION BASIN GRADING
DETAIL, STA 225+00 TO 229+00
& STA 244+00 TO STA 248+00**

SCALE: 1" = 20'
DATE: 04/15/11

DRAWN BY: LK
CHECKED BY: TL

TENG
TENG & ASSOCIATES, INC.
ENGINEERS/ARCHITECTS/PLANNERS
815 N. MICHIGAN AVE. CHICAGO, IL 60611
TELEPHONE: 312.666.6000

I:\0214003.DGN, ..SEC02A002.DGN, ..NR02A002.DGN, ..AL02A003.DGN, ..SEC02A002.DGN, ..PI02A002.DGN, ..L02A003.DGN, ..SEC02A002.DGN, ..CONTRACT.VIA TENG SHEET 1002A003.SHT
 4:4:20 11:54:09
 I 2,3,4,5,6,7,8,9,10,11,12,13,14,15,16,17,18,19,20,21,22,23,24,25,26,27,28,29,30,31,32,33,34,35,36,37,38,39,40,41,42,43,44,45,46,47,48,49,50,51,52,53,54,55,56,57,58,59,60,61,62