

CASTING SCHEDULE		
LOCATION	EJ/W	NEENAH
R-12	1226	R-2000A
DEPT. CURB	1220 MS	R-2011
PAVED	1020	R-1713
NON-PAVED	1020	R-2636

PIPE SIZE	d
10" - 24"	45°
24" - 48"	60°
48" - 72"	SPECIAL

Approved: City Engineer
Victor C. Ramirez, P.E.
 Victor C. Ramirez, P.E.
 Director of Engineering and Building

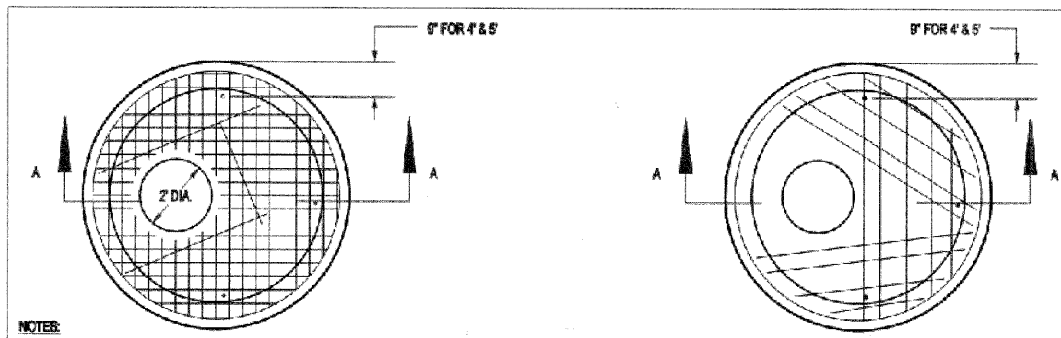
Drawing Name
STORM MANHOLE TYPE A

Drawing Number
UD-01d

Date: 4/15/2007

Drawn: EM
 Checked: LZ

CRYSTAL LAKE ILLINOIS Engineering Division



- NOTES:
1. PRECAST FLAT TOPS SHALL CONFORM TO SECTION 504 OF THE STANDARD SPECIFICATIONS.
 2. REINFORCEMENT BARS OR WELDED WIRE FABRIC SHALL BE IN ACCORDANCE WITH ARTICLE 1006.10 OF THE STANDARD SPECIFICATIONS.
 3. JOINT CONFIGURATION AND DIMENSIONS SHALL MATCH AND FIT THE RISER JOINT DETAIL.
 4. LIFTING DEVICES OTHER THAN THAT SHOWN MAY BE USED SUBJECT TO APPROVAL BY THE ENGINEER.
 5. THE FLAT SLAB TOP MAY BE USED IN LIEU OF THE TAPERED TOPS SHOWN ON STANDARD 1814, 1828, 1827, OR 1886, AT THE OPTION OF THE CONTRACTOR OR WHEN FIELD CONDITIONS PROHIBIT THE USE OF TAPERED TOPS.
 6. THE COST OF FURNISHING AND INSTALLING THE FLAT SLAB TOP SHALL BE INCLUDED IN THE UNIT PRICE FOR CATCH BASIN OR MANHOLE.

Approved: City Engineer
Victor C. Ramirez, P.E.
 Victor C. Ramirez, P.E.
 Director of Engineering and Building

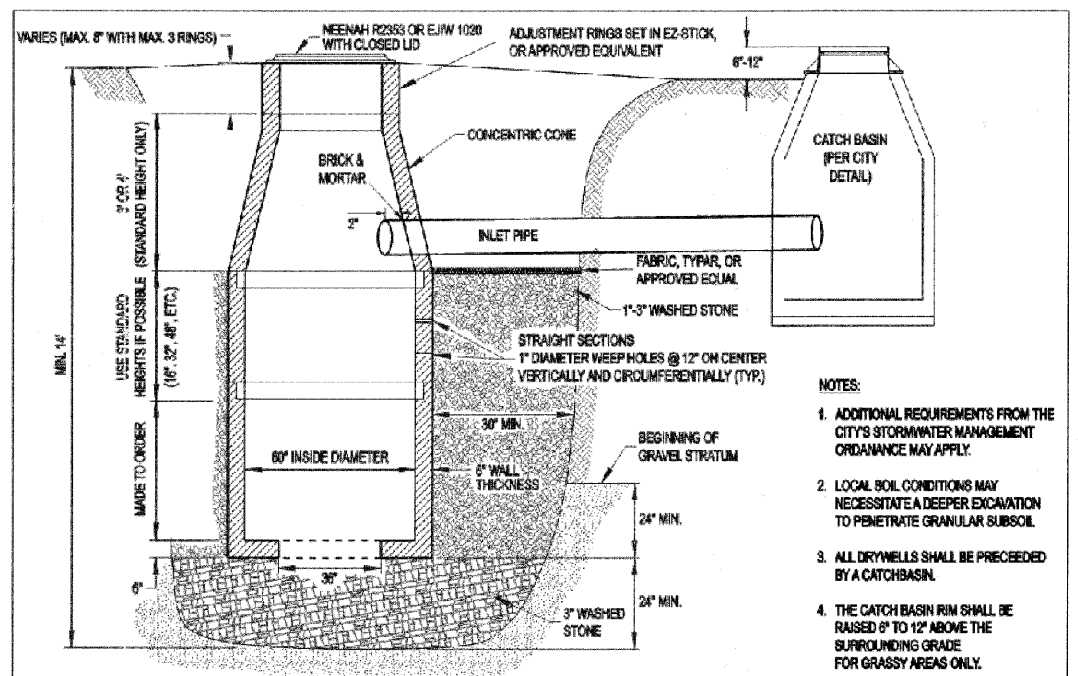
Drawing Name
ECCENTRIC FLAT TOPS FOR CURB INLET STORM MANHOLES

Drawing Number
UD-02b

Date: 4/15/2007

Drawn: EM
 Checked: LZ

CRYSTAL LAKE ILLINOIS Engineering Division



Approved: City Engineer
Victor C. Ramirez, P.E.
 Victor C. Ramirez, P.E.
 Director of Engineering and Building

Drawing Name
DRYWELL

Drawing Number
UD-03

Date: 4/16/2007

Drawn: EM
 Checked: LZ

CRYSTAL LAKE ILLINOIS Engineering Division

REVISIONS	
NAME	DATE

MCHENRY COUNTY DIVISION OF TRANSPORTATION
 WALKUP ROAD F.A.U. 0085

CITY OF CRYSTAL LAKE DETAILS
SHEET 4 OF 8

SCALE: N.T.S. DRAWN BY: MZD

DATE: 04/15/11 CHECKED BY: MCD

TENG ENGINEERS & ARCHITECTS, INC.
 205 N. MICHIGAN AVE. CHICAGO, IL 60601
 TELEPHONE: 312-640-0000

STANBURJ
 4-19-2011 10:52:06
 \\FS-0044\AMV\VAULT\LD-TRANS_D\2202\300-03\CIVIL\CAD\02 - CONTRACT\CVIA_TENG\SHEET\RD02\04\034.SHT
 1 2 3 4 5 6 7 8 9 10 11 12 13 14 15 16 17 18 19 20 21 22 23 24 25 26 27 28 29 30 31 32 33 34 35 36 37 38 39 40 41 42 43 44 45 46 47 48 49 50 51 52 53 54 55 56 57 58 59 60 61 62 63