

F.A.U. RTE.	SECTION	COUNTY	TOTAL SHEETS	SHEET NO.
1321	06-00034-00-PV	DUPAGE	69	1
ILLINOIS		CONTRACT NO. 63581		

FOR INDEX OF SHEETS, SEE SHEET NO. 2
 FOR LIST OF HIGHWAY STANDARDS, SEE SHEET NO. 2

STATE OF ILLINOIS
 DEPARTMENT OF TRANSPORTATION
 DIVISION OF HIGHWAYS
**PLANS FOR PROPOSED
 FEDERAL AID HIGHWAY**

DESIGN DESIGNATION:
 JOLIET RD = URBAN COLLECTOR
 MADISON AVE = URBAN COLLECTOR

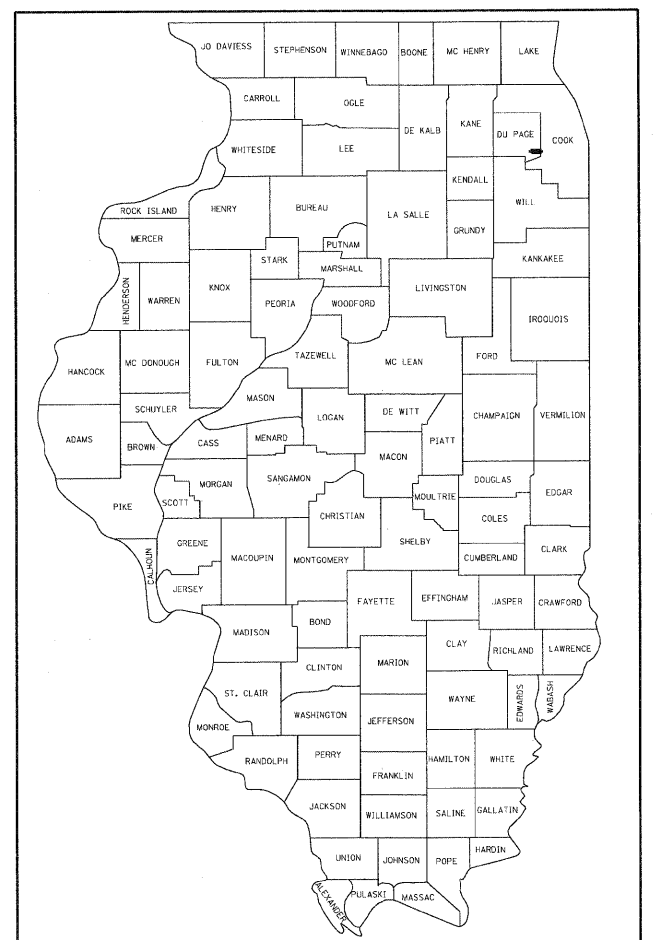
ADT:
 JOLIET RD = 6,000 (2030)
 MADISON AVE = 10,000 (2030)

DESIGN SPEED:
 JOLIET RD = 45 MPH
 MADISON AVE (NORTH) = 40 MPH
 MADISON AVE (SOUTH) = 35 MPH

MADISON STREET AT JOLIET ROAD
 INTERSECTION IMPROVEMENTS
 SECTION 06-00034-00-PV
 PROJECT M-9003(192)

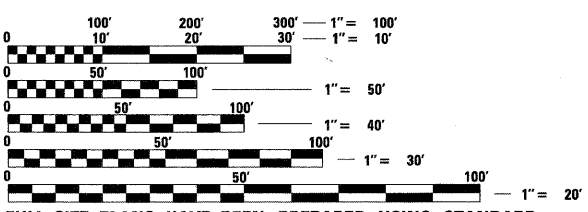
VILLAGE OF BURR RIDGE
 DUPAGE COUNTY
 JOB NO: C-91-250-09

FAU ROUTE 2674



LOCATION OF SECTION INDICATED THUS: [Black Rectangle]

PROJECT LOCATED IN
 VILLAGE OF BURR RIDGE

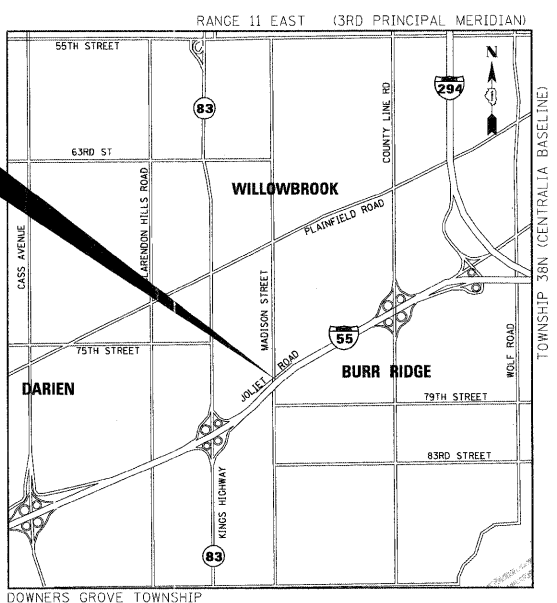


FULL SIZE PLANS HAVE BEEN PREPARED USING STANDARD ENGINEERING SCALES. REDUCED SIZED PLANS WILL NOT CONFORM TO STANDARD SCALES. IN MAKING MEASUREMENTS ON REDUCED PLANS, THE ABOVE SCALES MAY BE USED.

J.U.L.I.E. (JOINT UTILITY LOCATION INFORMATION FOR EXCAVATION)
 1-800-892-0123 OR 811

PLANS PREPARED BY
 HDR ENGINEERING INC.
 FOR
 THE VILLAGE OF BURR RIDGE PAUL MAY P.E.,
 DIRECTOR OF PUBLIC WORKS, VILLAGE ENGINEER

BEGIN IMPROVEMENTS
 JOLIET ROAD
 STA 107 + 93.00 - 118 + 65.00
 BEGIN IMPROVEMENTS
 MADISON STREET
 STA. 247 + 80.00 - 252 + 17.00



LOCATION MAP
 SCALE = N.T.S.

GROSS LENGTH = 1,474 FT. = 0.28 MILES
 NET LENGTH = 1,474 FT. = 0.28 MILES

BY: *David W. Wong* DATE: 3/24/2011
 HDR ENGINEERING, INC.
 DWGS. 14-69
 LICENSE EXPIRES NOV. 30, 2011

BY: *Jay L. 97* DATE: 3/24/2011
 HDR ENGINEERING, INC.
 DWGS. 1-15
 LICENSE EXPIRES NOV. 30, 2011

BY: *A. P. 111* DATE: 3/24/11
 GEOSERVICES, INC.
 DWGS. 48
 LICENSE EXPIRES NOV. 30, 2011

STATE OF ILLINOIS
 DEPARTMENT OF TRANSPORTATION

APPROVED *PAUL D. MAY, P.E. 3/23/2011*
 DIRECTOR OF PUBLIC WORKS, VILLAGE ENGINEER

PASSED *APRIL 11*, 2011
Christina Hebert
 DISTRICT 4 ENGINEER OF LOCAL ROADS & STREETS

RELEASING FOR BID
 BASED ON LIMITED
 REVIEW *APRIL 11*, 2011
Diana M. O'Keefe
 DEPUTY DIRECTOR OF HIGHWAYS, REGION 1 ENGINEER

**PRINTED BY THE AUTHORITY
 OF THE STATE OF ILLINOIS**

HDR 8550 W. Bryn Mawr Ave., Suite 900
 Chicago, IL 60631
 773-380-7900
 HDR Engineering, Inc.

PROGRAM AND OFFICE ENGINEER: CHARLES F. RIDDLE, P.E., (847) 705-4406, SCHAUMBURG, IL.

CONTRACT NO. 63581