

PROPOSED MOT LEGEND

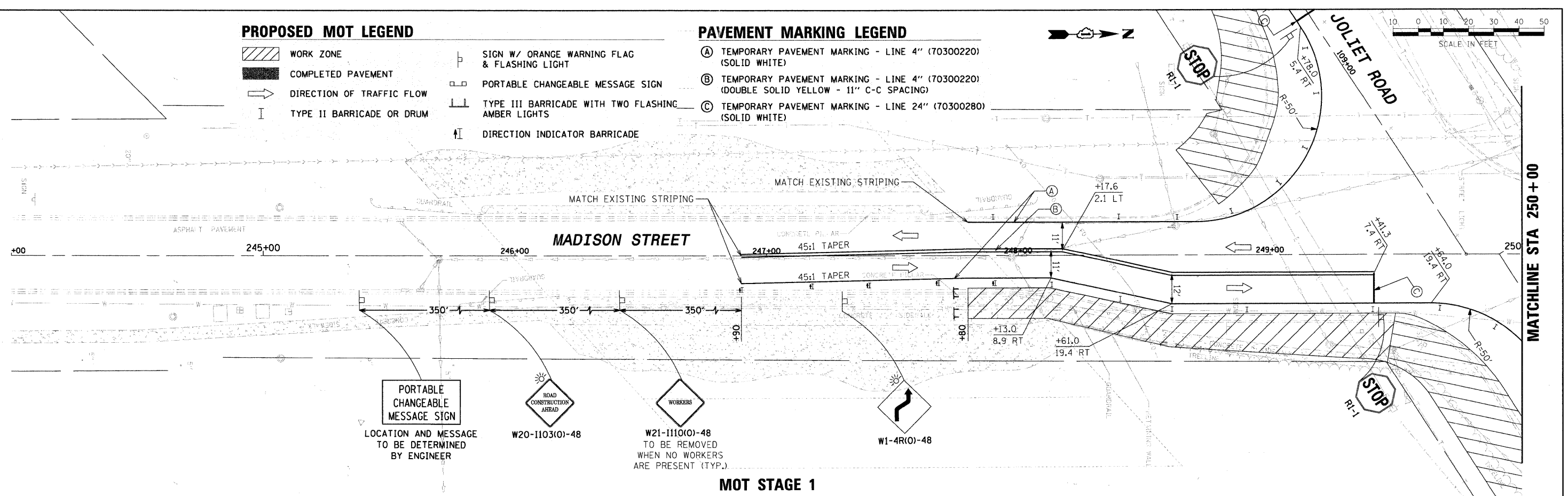
- WORK ZONE
- COMPLETED PAVEMENT
- DIRECTION OF TRAFFIC FLOW
- TYPE II BARRICADE OR DRUM
- SIGN W/ ORANGE WARNING FLAG & FLASHING LIGHT
- PORTABLE CHANGEABLE MESSAGE SIGN
- TYPE III BARRICADE WITH TWO FLASHING AMBER LIGHTS
- DIRECTION INDICATOR BARRICADE

PAVEMENT MARKING LEGEND

- (A) TEMPORARY PAVEMENT MARKING - LINE 4" (70300220) (SOLID WHITE)
- (B) TEMPORARY PAVEMENT MARKING - LINE 4" (70300220) (DOUBLE SOLID YELLOW - 11" C-C SPACING)
- (C) TEMPORARY PAVEMENT MARKING - LINE 24" (70300280) (SOLID WHITE)

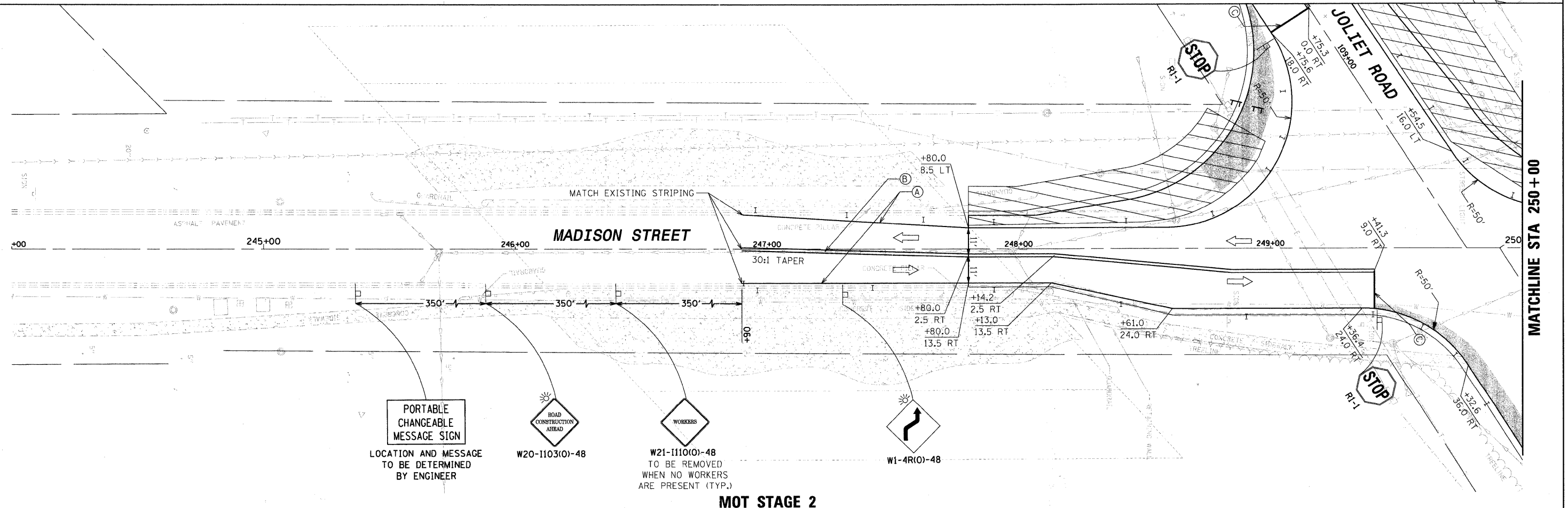


PLAN	SURVEYED	DATE
	NOTED	
	ALIGNED	
	CHECKED	
	BY	
	NO. OF MAY CHECKED	
	CADD FILE NAME	
	NO.	



MOT STAGE 1

PROFILE	SURVEYED	DATE
	NOTED	
	ALIGNED	
	CHECKED	
	BY	
	NO. OF MAY CHECKED	
	STRUCTURE NOTATIONS CHKD	
	NO.	



MOT STAGE 2

FILE NAME = 01353897-SHT-MOT-05.DGN	USER NAME = bhenrich	DESIGNED - DW	REVISED -	STATE OF ILLINOIS DEPARTMENT OF TRANSPORTATION	VILLAGE OF BURR RIDGE JOLIET RD AT MADISON ST SUGGESTED MAINTENANCE OF TRAFFIC PLANS STAGE 1 & 2	F.A.U. RTE. 2674	SECTION 06-00034-00-PV	COUNTY DUPAGE	TOTAL SHEETS 69	SHEET NO. 27	CONTRACT NO. 63581
PLOT SCALE = #SCALE#	CHECKED - JC	REVISED -	SCALE:			SHEET NO. 5 OF 6 SHEETS	STA. 244+00.00 TO STA. 250+00.00	FED. ROAD DIST. NO.	ILLINOIS FED. AID PROJECT		
PLOT DATE = 6/22/2011	DATE - 03-28-2011	REVISED -									