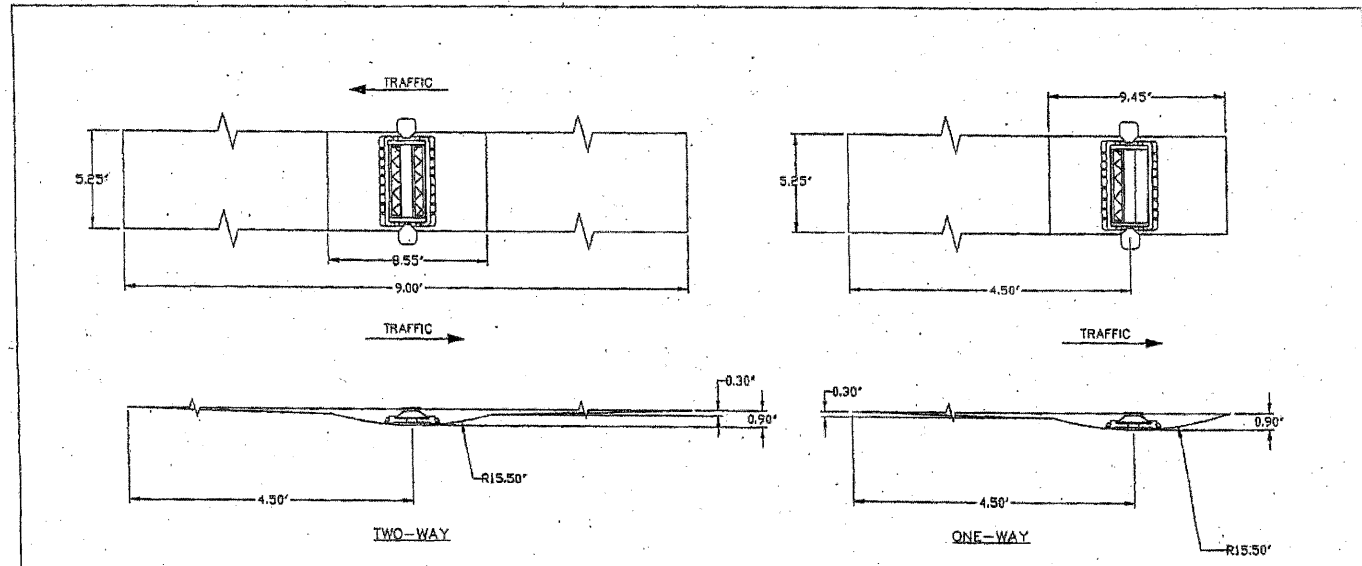


DATE	
BY	
REVIEWED	
ALIGNED CHECKED	
RT. OF WAY CHECKED	
PLD FILE NAME	
PLAN	
NOTE BOOK NO.	

DATE	
BY	
REVIEWED	
GRADES CHECKED	
STRUCTURE NOTATIONS CHECKED	
PROFILE	
NOTE BOOK NO.	



RECESSED REFLECTIVE PAVEMENT MARKERS

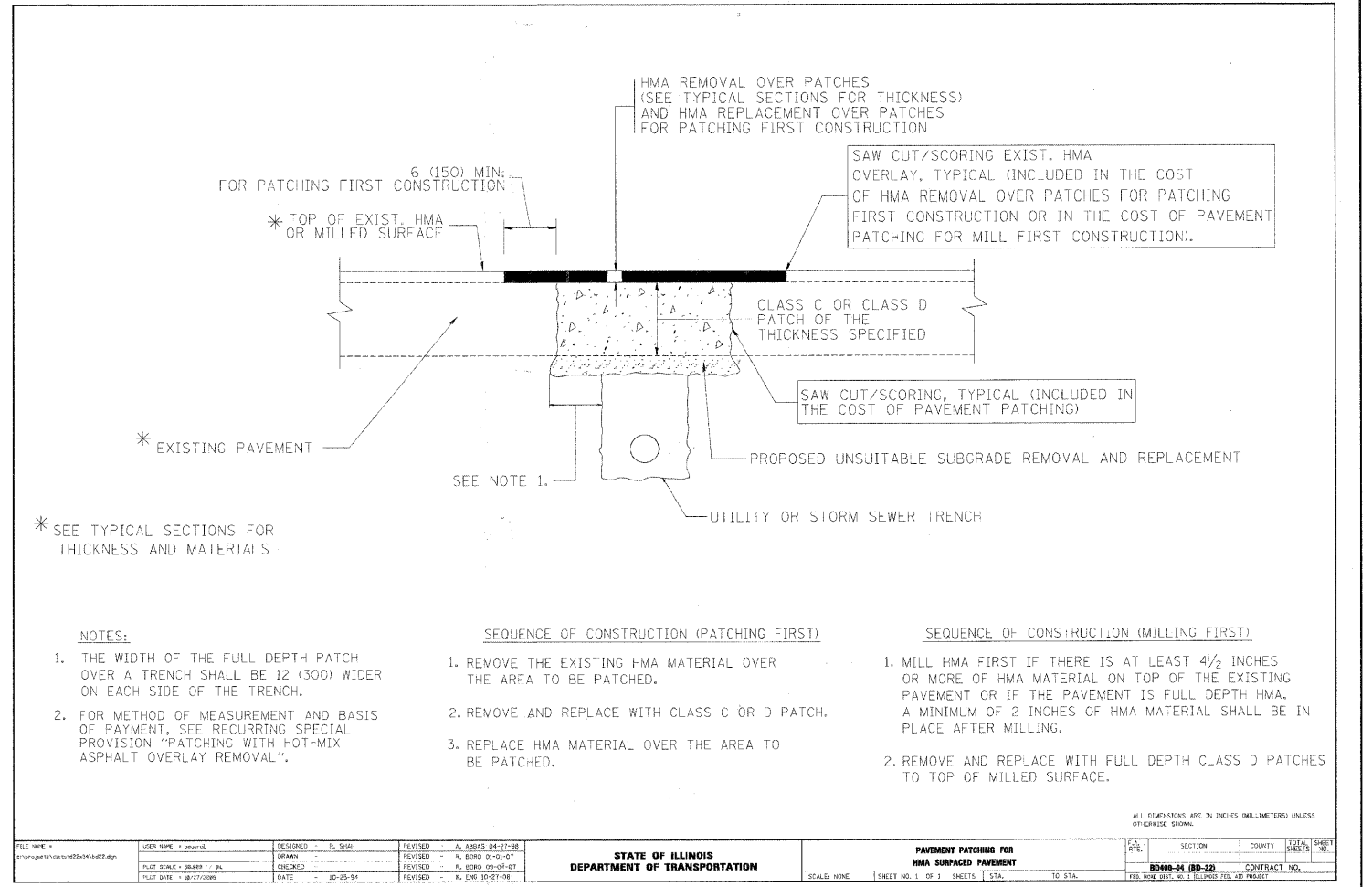
INSTALLATION NOTES:

1. SAW CUT TO DIMENSIONS SHOWN.
2. SAW CUT AREAS ARE TO BE DRY AND FREE OF MATERIAL THAT ADVERSELY AFFECTS THE ADHESIVE BOND.
3. INSTALL THE REFLECTOR WITH AN APPROVED TWO-COMPONENT EPOXY ADHESIVE. EPOXY SHOULD NOT OBSCURE OR BLOCK THE LENS.
4. REFLECTOR SHALL BE 3M SERIES 190 OR APPROVED EQUIVALENT.

GENERAL NOTES:

1. INSTALLATION SHALL CONFORM TO IDOT HIGHWAY STANDARD 781001-03 (OR LATEST) FOR MARKER PLACEMENT.
2. IDOT STANDARD 781001-03 SHALL BE MODIFIED TO REFLECT RECESSED PAVEMENT MARKERS INSTEAD OF RAISED PAVEMENT MARKERS.

TYPICAL RECESSED REFLECTIVE PAVEMENT MARKERS



* SEE TYPICAL SECTIONS FOR THICKNESS AND MATERIALS

NOTES:

1. THE WIDTH OF THE FULL DEPTH PATCH OVER A TRENCH SHALL BE 12 (300) WIDER ON EACH SIDE OF THE TRENCH.
2. FOR METHOD OF MEASUREMENT AND BASIS OF PAYMENT, SEE RECURRING SPECIAL PROVISION "PATCHING WITH HOT-MIX ASPHALT OVERLAY REMOVAL".

SEQUENCE OF CONSTRUCTION (PATCHING FIRST)

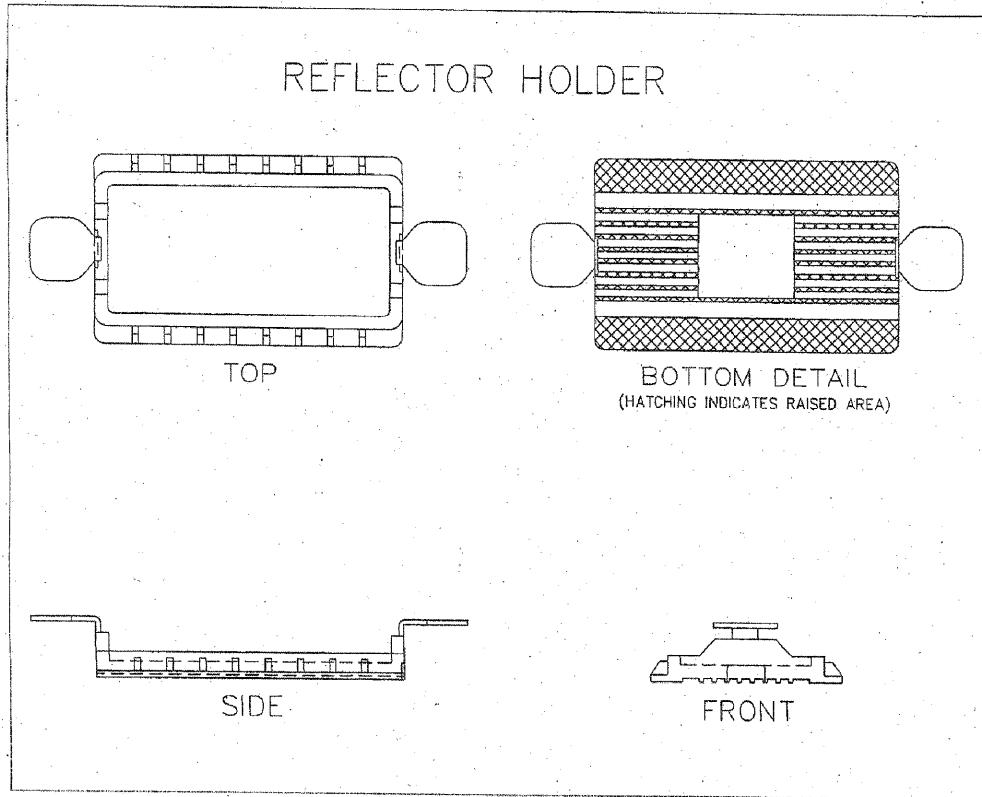
1. REMOVE THE EXISTING HMA MATERIAL OVER THE AREA TO BE PATCHED.
2. REMOVE AND REPLACE WITH CLASS C OR D PATCH.
3. REPLACE HMA MATERIAL OVER THE AREA TO BE PATCHED.

SEQUENCE OF CONSTRUCTION (MILLING FIRST)

1. MILL HMA FIRST IF THERE IS AT LEAST 4 1/2 INCHES OR MORE OF HMA MATERIAL ON TOP OF THE EXISTING PAVEMENT OR IF THE PAVEMENT IS FULL DEPTH HMA. A MINIMUM OF 2 INCHES OF HMA MATERIAL SHALL BE IN PLACE AFTER MILLING.
2. REMOVE AND REPLACE WITH FULL DEPTH CLASS D PATCHES TO TOP OF MILLED SURFACE.

ALL DIMENSIONS ARE IN INCHES (MILLIMETERS UNLESS OTHERWISE SHOWN)

FILE NAME	USER NAME	DESIGNED	REVISED	STATE OF ILLINOIS DEPARTMENT OF TRANSPORTATION	PAVEMENT PATCHING FOR HMA SURFACED PAVEMENT	SECTION	COUNTY	TOTAL SHEETS	SHEET NO.
2674	malopez	BH	DW			06-00034-00-PV	DUPAGE	69	53
					SCALE: NTS	SHEET NO. 4 OF 5 SHEETS		STA. TO STA.	
					FED. ROAD DIST. NO.		ILLINOIS FED. AID PROJECT		



FILE NAME = D1363887-SHT-DET-06.DGN

USER NAME = malopez	DESIGNED -	REVISED -
DRAWN - BH	REVISOR -	
CHECKED - DW	REVISOR -	
DATE - 03-28-2011	REVISOR -	

**STATE OF ILLINOIS
DEPARTMENT OF TRANSPORTATION**

**VILLAGE OF BURR RIDGE JOLIET RD AT MADISON ST
MISCELLANEOUS DETAILS**

F.A.U. RTE.	SECTION	COUNTY	TOTAL SHEETS	SHEET NO.
2674	06-00034-00-PV	DUPAGE	69	53
BD-32			CONTRACT NO. 63581	