

F.A.U. RTE.	SECTION	COUNTY	TOTAL SHEETS	SHEET NO.
3504	09-00071-00-SW	LAKE	27	1
		ILLINOIS	CONTRACT NO. 63589	

INDEX OF SHEETS

- 1 COVER
- 2 GENERAL NOTES
- 3 SUMMARY OF QUANTITIES
- 4 TYPICAL SECTIONS
- 5-7 SCHEDULES
- 8 ALIGNMENT, TIES AND BENCHMARKS
- 9-12 REMOVAL PLANS
- 13-16 SIDEWALK PLANS
- 17-19 PROFILES
- 20-22 DETAILS
- 23-26 CROSS SECTIONS
- 27 GEOTECHNICAL INFORMATION

LIST OF STANDARDS

- 000001-06 STANDARD SYMBOLS, ABBREVIATIONS AND PATTERNS
- 280001-05 TEMPORARY EROSION CONTROL SYSTEMS
- 424001-05 CURB RAMPS FOR SIDEWALKS
- 542301-03 PRECAST REINFORCED CONCRETE FLARED END SECTION
- 602001-02 CATCH BASIN TYPE A
- 602301-03 INLET TYPE A
- 604001-03 FRAMES AND LIDS, TYPE 1
- 604051-03 FRAME AND GRATE TYPE 11
- 604056-03 FRAME AND GRATE TYPE 11V
- 606001-04 CONCRETE CURB TYPE B AND COMBINATION CONCRETE CURB AND GUTTER
- 701006-03 OFF-RD OPERATIONS, 2L, 2W, 15' TO 24" FROM PAVEMENT EDGE
- 701501-06 URBAN LANE CLOSURE, 2L, 2W, UNDIVIDED
- 701502-04 URBAN LANE CLOSURE, 2L, 2W, WITH BIDIRECTIONAL LEFT TURN LANE
- 701801-04 LANE CLOSURE MULTILANE 1W OR 2W CROSSWALK OR SIDEWALK CLOSURE
- 701901-01 TRAFFIC CONTROL DEVICES
- BD-12 MANHOLE WITH RESTRICTOR PLATE (DISTRICT 1)

PROGRAM AND OFFICE ENGINEER: CHARLES F. RIDDLE, P.E. 847-705-4406 SCHAUMBURG, IL

STATE OF ILLINOIS
DEPARTMENT OF TRANSPORTATION
DIVISION OF HIGHWAYS

**PLANS FOR PROPOSED
FEDERAL AID HIGHWAY**

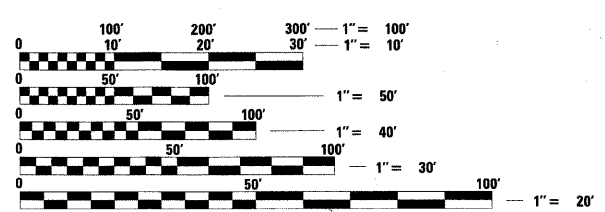
**FAU 3504 (SOUTH OLD RAND RD) (IL ROUTE 22 TO GRAND AVE) &
SURRYSE ROAD (ALPINE FAMILY CENTER TO BUESCHING RD)**

PROPOSED SIDEWALK

**SECTION: 09-00071-00-SW
PROJECT: CMM-9003(270)**

**LAKE ZURICH
LAKE COUNTY**

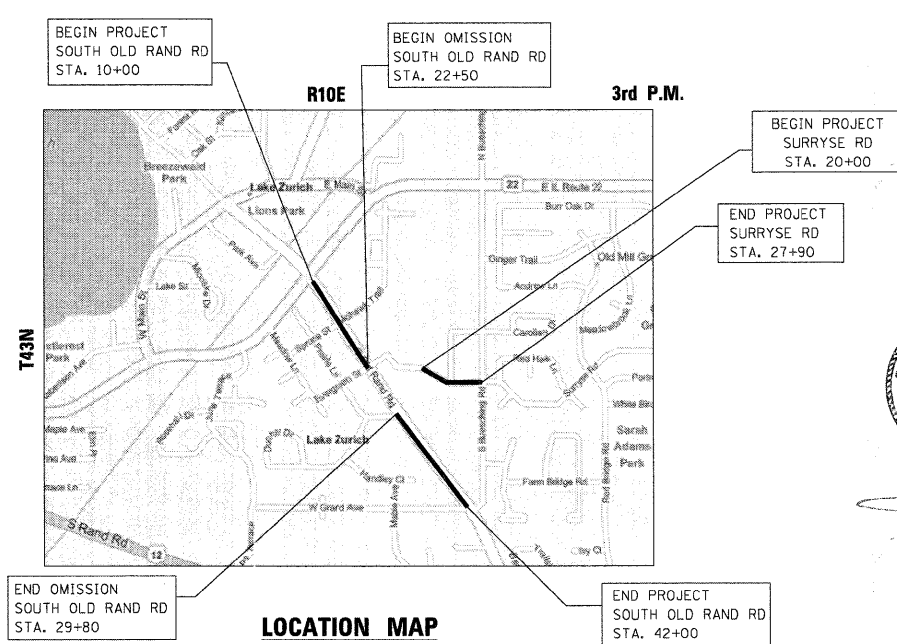
C-91-396-09



FULL SIZE PLANS HAVE BEEN PREPARED USING STANDARD ENGINEERING SCALES. REDUCED SIZED PLANS WILL NOT CONFORM TO STANDARD SCALES. IN MAKING MEASUREMENTS ON REDUCED PLANS, THE ABOVE SCALES MAY BE USED.

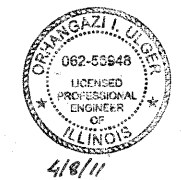
J.U.L.I.E.
JOINT UTILITY LOCATION INFORMATION FOR EXCAVATION
1-800-892-0123
OR 811

CONTRACT NO. 63589



LOCATION MAP
NOT TO SCALE
ELA TOWNSHIP

GROSS LENGTH = 3990 FT. = 0.756 MILE
NET LENGTH = 3260 FT. = 0.617 MILE



4/8/11
E.F.P. 11/30/11



LOCATION OF SECTION INDICATED THUS: - [black rectangle] -

STATE OF ILLINOIS
DEPARTMENT OF TRANSPORTATION
DIVISION OF HIGHWAYS

Approved April 8, 2011 (DATE)
[Signature] (SIGNATURE)
VILLAGE OF LAKE ZURICH, VILLAGE ENGINEER / PUBLIC WORKS DIRECTOR

Passed April 13, 2011 (DATE)
[Signature] (SIGNATURE)
District Engineer of Local Roads & Streets

Releasing for Bid
Based on Limited Review April 13, 2011 (DATE)
[Signature] (SIGNATURE)
Deputy Director of Highways, Region 1 Engineer

**PRINTED BY THE AUTHORITY
OF THE STATE OF ILLINOIS**



ZIM Group, LLC
203 North Wabash Avenue
Suite 804
Chicago, IL 60601