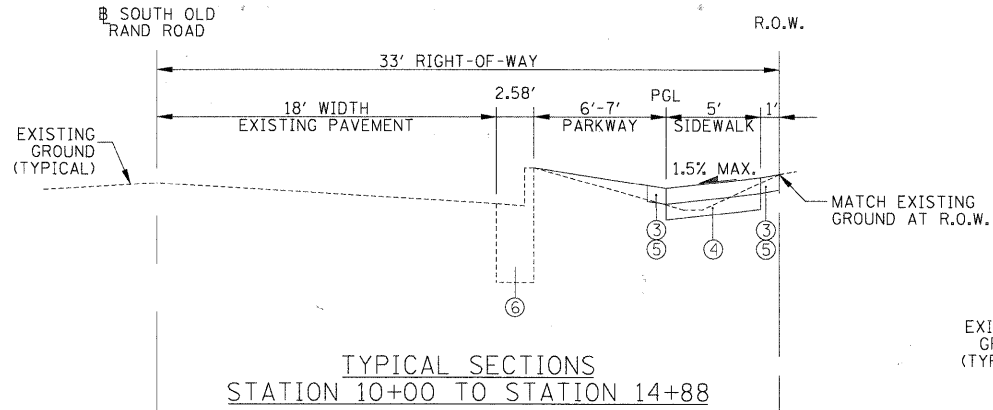


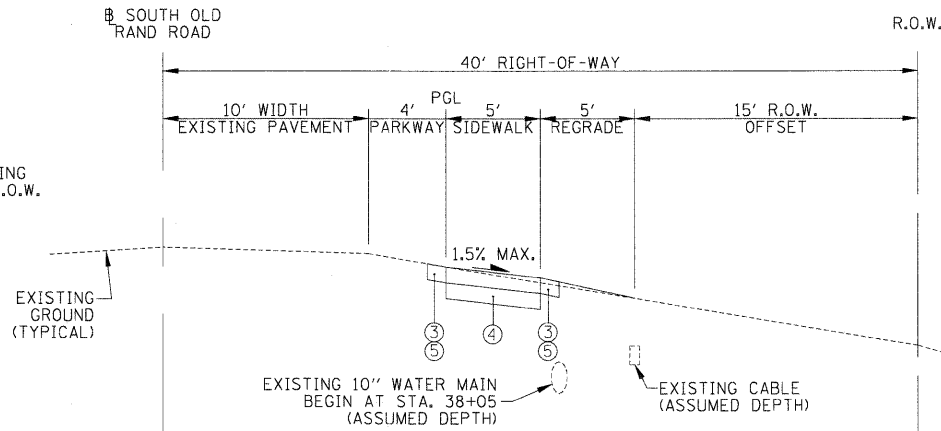
SOUTH OLD RAND ROAD



TYPICAL SECTIONS
STATION 10+00 TO STATION 14+88

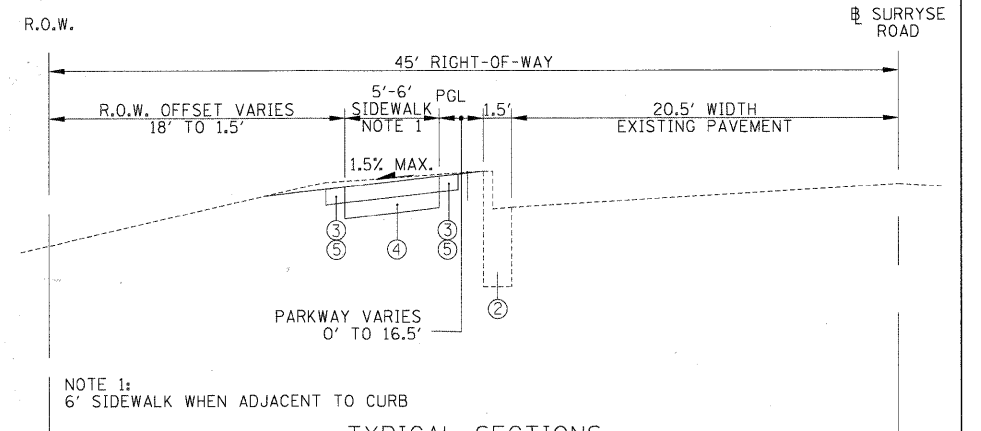
TYPICAL SECTIONS

(NOT TO SCALE)

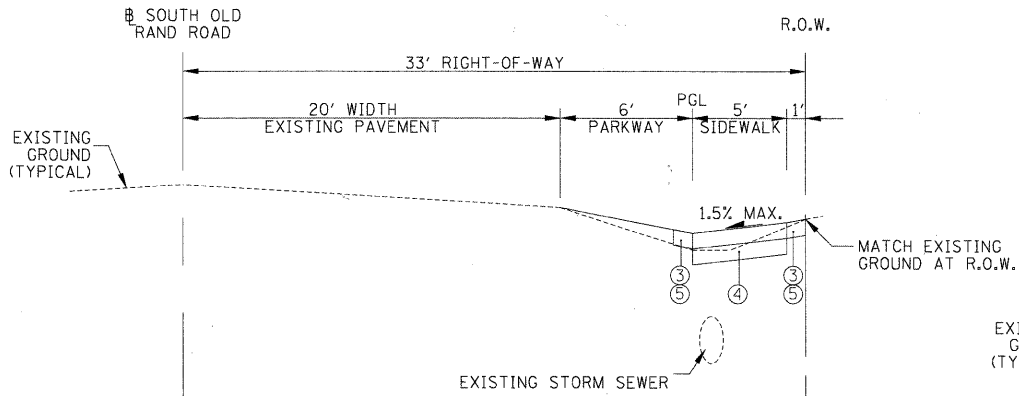


TYPICAL SECTIONS
STATION 34+00 TO STATION 38+24

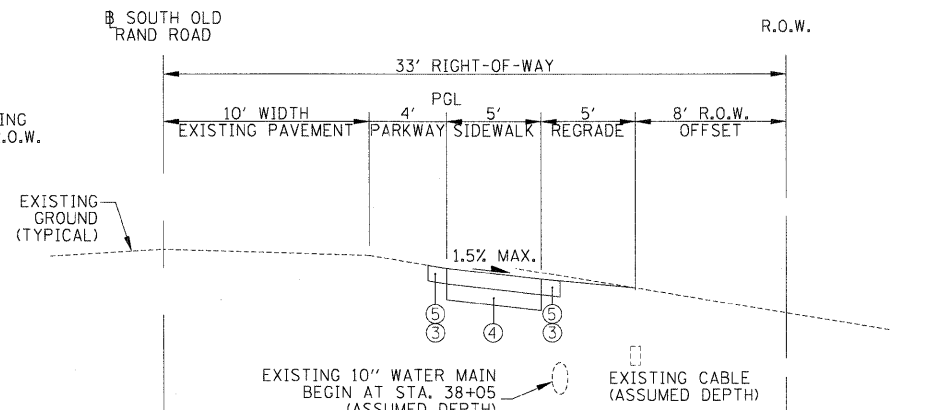
SURRYSE ROAD



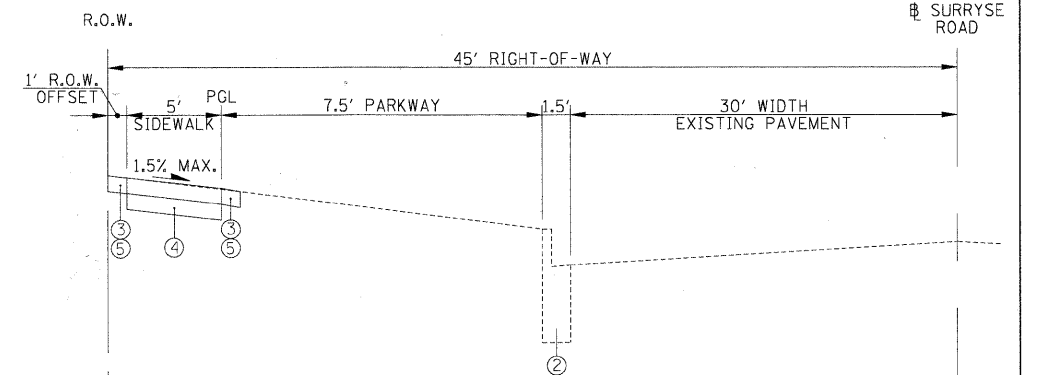
TYPICAL SECTIONS
STATION 20+27 TO STATION 23+64



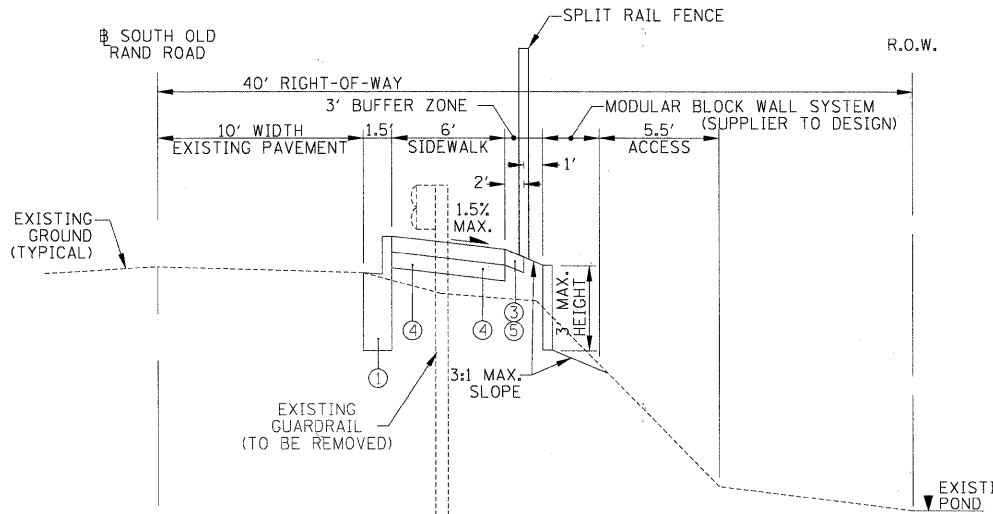
TYPICAL SECTIONS
STATION 14+88 TO STATION 22+18
(OMISSION 22+18 TO 29+80)



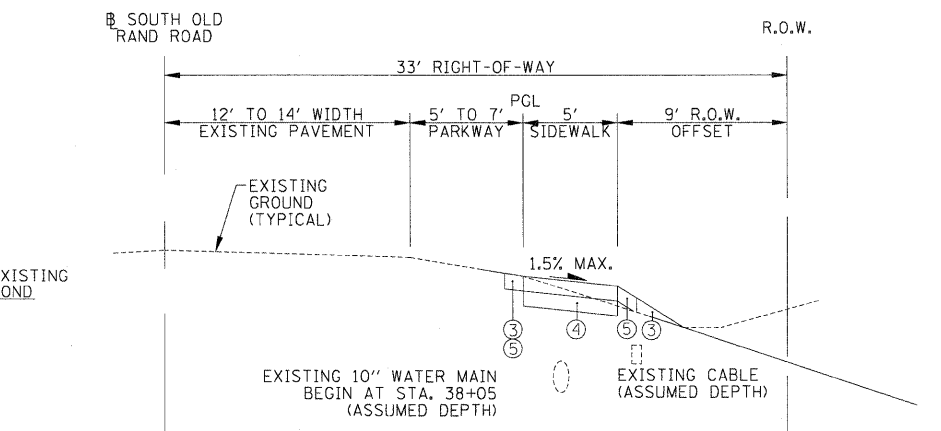
TYPICAL SECTIONS
STATION 34+24 TO STATION 38+86



TYPICAL SECTIONS
STATION 23+64 TO STATION 27+51



TYPICAL SECTIONS
STATION 29+80 TO STATION 34+00



TYPICAL SECTIONS
STATION 39+11 TO STATION 41+69

LEGEND

- ① PR. COMBINATION CONCRETE CURB & GUTTER, TYPE B-6.12
- ② EX. COMBINATION CONCRETE CURB & GUTTER, TYPE B-6.12
- ③ PR. SEEDING, CLASS 1
- ④ PR. SUBBASE GRANULAR MATERIAL, TYPE B 4" (SEE SIDEWALK SCHEDULE FOR VARYING SUBBASE DEPTHS)
- ⑤ PR. TOPSOIL FURNISH AND PLACE, 5"
- ⑥ EX. COMBINATION CONCRETE CURB & GUTTER, TYPE B-6.24

FILE NAME =	DESIGNED LSM	REVISED -
USER NAME = TRICE	DRAWN AO	REVISED -
PLOT DATE = 03/28/2011	CHECKED OIU	REVISED -
	DATE 03/28/2011	REVISED -



**STATE OF ILLINOIS
DEPARTMENT OF TRANSPORTATION**

**VILLAGE OF LAKE ZURICH
TYPICAL SECTIONS**

SCALE: SHEET NO. 1 OF 1 SHEETS STA. TO STA.

F.A.J. RTE.	SECTION	COUNTY	TOTAL SHEETS	SHEET NO.
3504	09-00071-00-SW	LAKE	27	4
CONTRACT NO. 63589				
ILLINOIS FED. AID PROJECT				