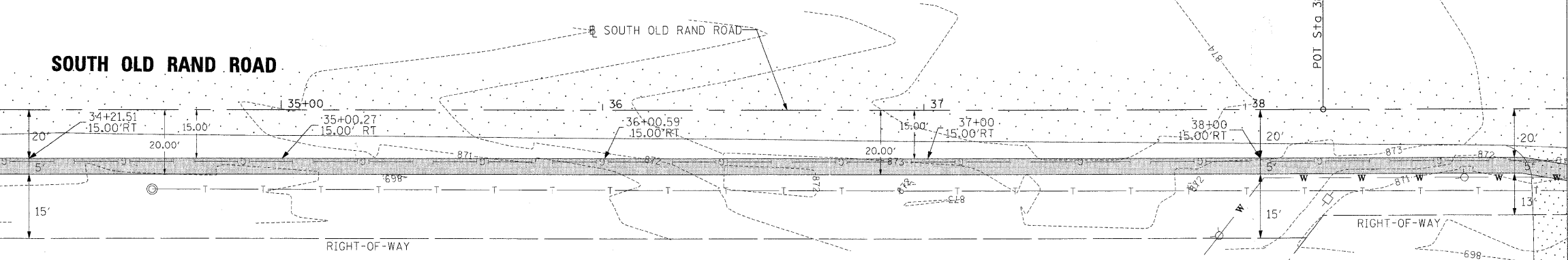


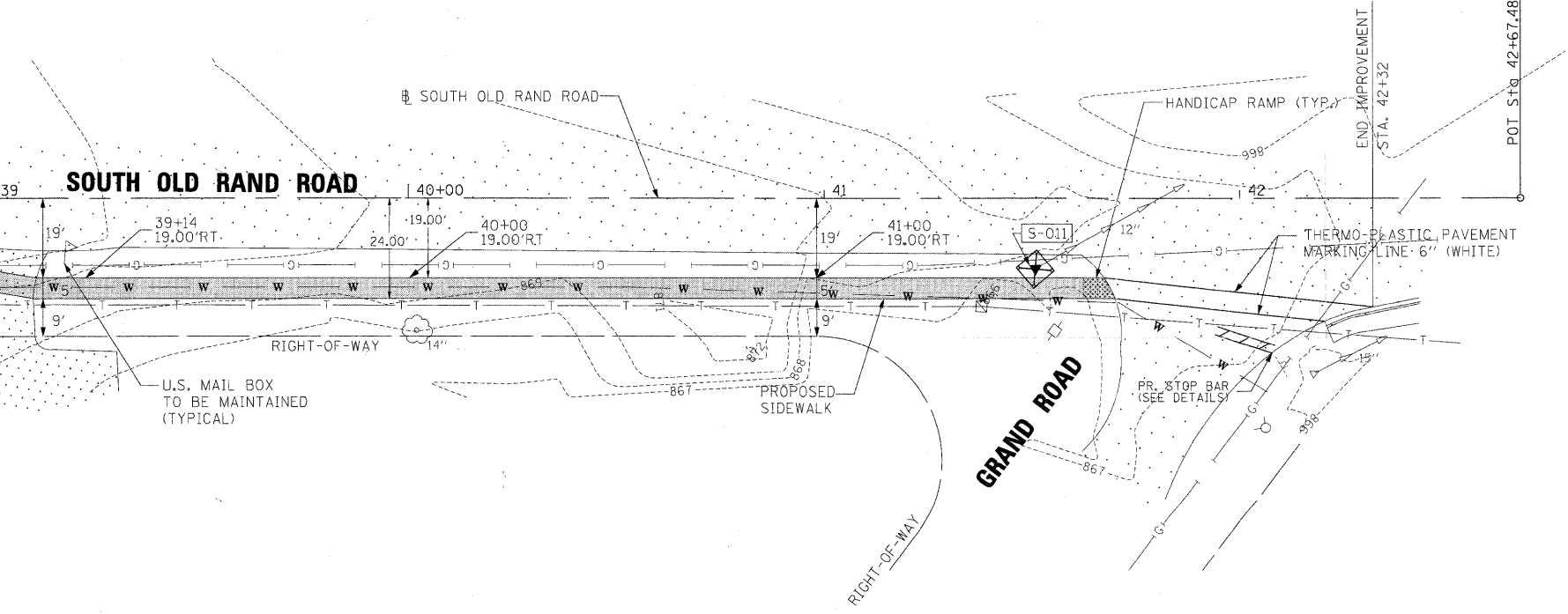
MATCHLINE STA. 34+00

MATCHLINE STA. 39+00

**SOUTH OLD RAND ROAD**



**SOUTH OLD RAND ROAD**



**LEGEND**

PROPOSED ELEMENTS

- CATCH BASIN
- STORM SEWER
- [ADJ] CATCH BASINS TO BE ADJUSTED WITH NEW TYPE 1 FRAME, CLOSED LID
- [REC] CATCH BASINS TO BE RECONSTRUCTED WITH NEW TYPE 1 FRAME, CLOSED LID
- [Hatched Box] HANDICAP RAMP
- [Dotted Box] SIDEWALK
- PERIMETER EROSION BARRIER
- [Diamond] INLET AND PIPE PROTECTION

FILE NAME =	DESIGNED LSM	REVISED -
USER NAME = TRICE	DRAWN AO	REVISED -
PLOT DATE = 03/28/2011	CHECKED OIU	REVISED -
	DATE 03/28/2011	REVISED -



**STATE OF ILLINOIS  
DEPARTMENT OF TRANSPORTATION**

**VILLAGE OF LAKE ZURICH  
SIDEWALK PLAN - SOUTH OLD RAND ROAD**

SCALE: SHEET NO. 3 OF 4 SHEETS STA. 34+00 TO STA. 42+67.48

F.A.J. RTE. 3504	SECTION 09-00071-00-SW	COUNTY LAKE	TOTAL SHEETS 27	SHEET NO. 15
CONTRACT NO. 63589				
ILLINOIS FED. AID PROJECT				