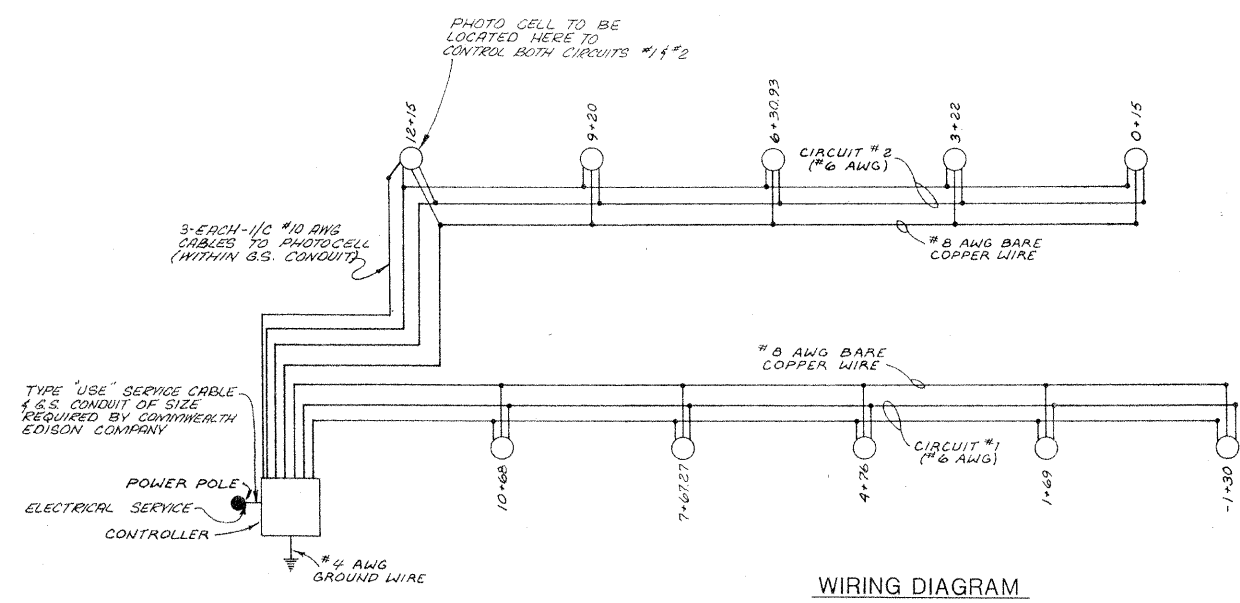
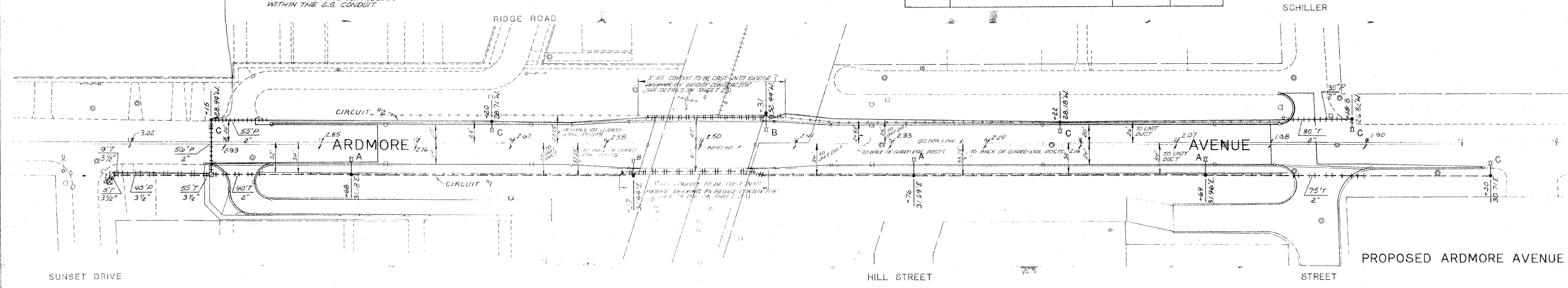


ROUTE	SECTION	COUNTY	TOTAL SHEETS	SHEET NO.
FAU 2451	76-00076 00-05	DuPAGE	36	25
STA.	TO STA.			
FED. ROAD DIST NO.	ILLINOIS	FED. AID PROJECT/MS-5003/002		

STREET LIGHTING SUMMARY OF QUANTITIES			
CODE NO.	ITEM	UNIT	QUANTITY
L00006	CONDUIT IN TRENCH, 2" DIA., GALVANIZED STEEL	LIN. FT.	145
L00009	CONDUIT IN TRENCH, 3 1/2" DIA., GALVANIZED STEEL	LIN. FT.	69
L00147	CONDUIT PUSHED, 2" DIA., GALVANIZED STEEL	LIN. FT.	146
L00150	CONDUIT PUSHED, 3 1/2" DIA., GALVANIZED STEEL	LIN. FT.	40
L02200	POLE FOUNDATION	EACH	8
L02702	LIGHTING UNIT COMPLETE IN PLACE, 12' MAST ARM	EACH	3
L02703	LIGHTING UNIT COMPLETE IN PLACE, 8' MAST ARM	EACH	5
L03200	HANDHOLE	EACH	2
L04300	TRENCH AND BACKFILL	LIN. FT.	2239
L04779	ELECTRIC CABLE IN CONDUIT, 600V (PLASTIC INSULATED) 1/C NO. 10	LIN. FT.	561
L05055	LIGHTING UNIT COMPLETE IN PLACE, 10' MAST ARM	EACH	2
L05271	#8 AWG 1/C GROUND WIRE	LIN. FT.	2895
L05275	UNIT DUCT - 2 #6 AWG 1/C 600V CABLE IN 1" POLYETHYLENE DUCT	LIN. FT.	2849
L05379	CONTROL CABINET AND FOUNDATION, COMPLETE	EACH	1
L05566	SERVICE CONNECTION, MODIFIED	EACH	1



NOTE: PHOTOCELL TO BE LOCATED ON THIS POLE & 3-1/1C #10 CABLES SHALL BE INSTALLED FROM THE PHOTOCELL TO THE CONTROLLER WITHIN THE G.S. CONDUIT.



- NOTES:
- ALL STREET LIGHTING WORK UNDER THIS CONTRACT SHALL CONFORM TO THE APPLICABLE REQUIREMENTS OF "AMERICAN NATIONAL STANDARD PRACTICE FOR ROADWAY LIGHTING" UNLESS OTHERWISE SPECIFIED.
 - 3-1/C NO. 10 CABLES SHALL BE INSTALLED WITHIN THE G.S. CONDUIT FROM THE PHOTOCELL AT THE POLE AT STA. 12+15 TO THE CONTROLLER. SEPARATE PAYMENT WILL BE MADE FOR THE CABLES FROM THE POLE BASE TO THE CONTROLLER. THE COST OF THE CABLES FROM THE PHOTOCELL TO THE POLE BASE SHALL BE INCLUDED IN THE COST OF THE LIGHTING UNIT COMPLETE IN PLACE.
 - THE ELECTRICAL SERVICE SHALL MEET THE REQUIREMENTS OF COMMONWEALTH EDISON COMPANY. THE CUSTOMER'S CHARGE FROM COMMONWEALTH EDISON COMPANY SHALL BE INCLUDED IN THE COST OF SERVICE CONNECTION, MODIFIED.
 - THE SPECIAL FOUNDATIONS FOR THE TWO POLES ATTACHED TO THE BRIDGE ARE SHOWN ON SHEET #23. THE SPECIAL FOUNDATIONS ARE INCLUDED IN THE COST OF THE BRIDGE AND ARE NOT TO BE PAID FOR SEPARATELY.
 - THE 3" G.S. CONDUIT SHOWN AT THE BRIDGE TO BE DONE BY THE BRIDGE CONTRACTOR SHALL NOT BE MEASURED SEPARATELY FOR PAYMENT BUT SHALL BE INCLUDED IN THE BRIDGE COSTS. THE 1" UNIT-DUCT TO BE PUSHED THROUGH THE 3" CONDUIT AT THE BRIDGE WILL BE MEASURED FOR PAYMENT.

LIGHT STANDARDS

0.94 AVG. MAINTAINED FOOT CANDLES (MIN)

0.75 LAMP LUMEN DEPRECIATION FACTOR

0.95 DIRT FACTOR

30' MOUNTING HEIGHT

A - 12' MAST ARM

B - 10' MAST ARM

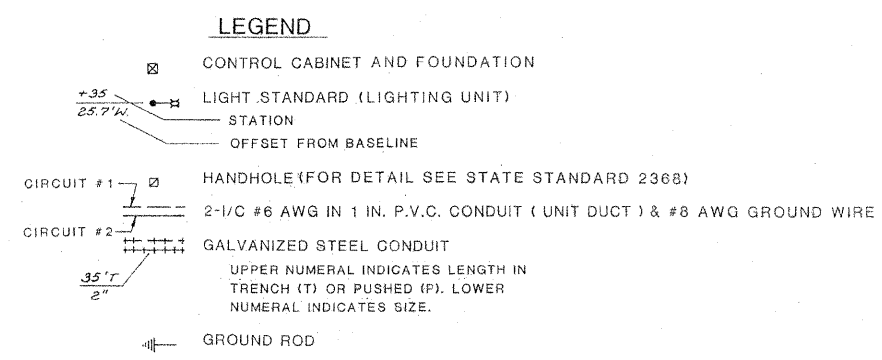
C - 8' MAST ARM

HIGH PRESSURE SODIUM, 250 WATTS.

25,500 LUMENS, TYPE III - M - CO

UNIFORMITY RATIO 3.8 : 1

(AVG. TO MIN. FC)



REVISIONS	
NAME	DATE
J. Ben Hatten	12/22/77
D.C.N.	1-30-78
AS BUILT D.C.N.	10-4-80
Added	7-2-11

ILLINOIS DIVISION OF HIGHWAYS

STREET LIGHTING PLAN

ARDMORE AVENUE

SCALE: 50' 0' 50'

DATE: 11/30/77

DRAWN BY: D. C. N.

CHECKED BY: G.A.S.