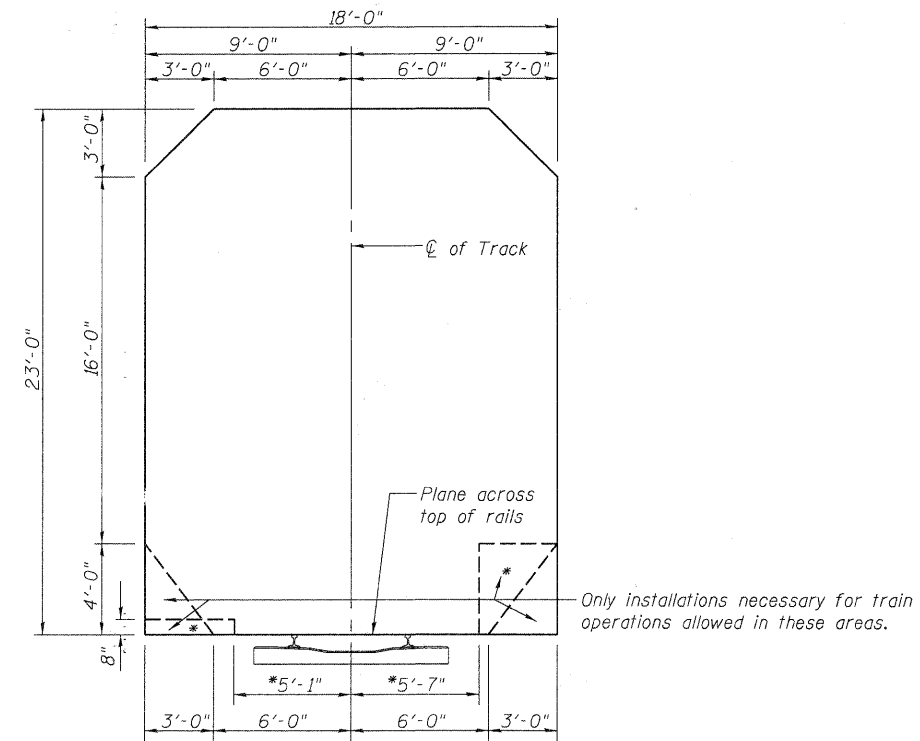


TOTAL BILL OF MATERIAL

ITEM	UNIT	SUPER	SUB	TOTAL
Removal of Existing Superstructures	Each	1		1
Concrete Removal	Cu. Yd.	8.8	201.0	209.8
Slope Wall Removal	Sq. Yd.		111	111
Concrete Structures	Cu. Yd.		421.9	421.9
Concrete Superstructure	Cu. Yd.	214.7		214.7
Bridge Deck Grooving	Sq. Yd.	932		932
Protective Coat	Sq. Yd.	1193		1193
Precast Prestressed Concrete Deck Beams (17" Depth)	Sq. Ft.	7102		7102
Reinforcement Bars, Epoxy Coated	Pound	54,710	21,060	75,770
Bridge Fence Railing	Foot	228		228
Slope Wall, 4"	Sq. Yd.		111	111
Furnishing Steel Piles HP 14x117	Foot		1474	1474
Driving Piles	Foot		924	924
Test Pile Steel HP 14x117	Each		2	2
Name Plates	Each	1		1
Epoxy Crack Injection	Foot		7	7
Braced Excavation	Cu. Yd.		111.4	111.4
Structural Repair of Concrete (Depth Equal to or less than 5")	Sq. Ft.		114	114
Concrete Wearing Surface, 5"	Sq. Yd.	791		791
Asbestos Bearing Pad Removal	Each	32		32

STRUCTURE INDEX OF SHEETS

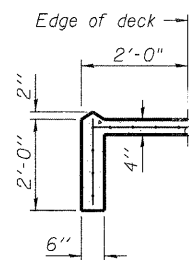
General Plan	Sheet No. 1 of 29
General Data	Sheet No. 2 of 29
Top of South Approach Slab Elevations	Sheet No. 3 of 29
Top of North Approach Slab Elevations	Sheet No. 4 of 29
Superstructure Plan	Sheet No. 5 of 29
Superstructure Cross Section and Details	Sheet No. 6 of 29
Superstructure Details	Sheet No. 7 of 29
17"x36" PPC Deck Beams Spans 1 & 3	Sheet No. 8 of 29
17"x36" PPC Deck Beam Details Spans 1 & 3	Sheet No. 9 of 29
17"x36" PPC Deck Beams Span 2	Sheet No. 10 of 29
17"x36" PPC Deck Beam Details Span 2	Sheet No. 11 of 29
17"x48" PPC Deck Beams Spans 1 & 3	Sheet No. 12 of 29
17"x48" PPC Deck Beam Details Spans 1 & 3	Sheet No. 13 of 29
17"x48" PPC Deck Beams Span 2	Sheet No. 14 of 29
17"x48" PPC Deck Beam Details Span 2	Sheet No. 15 of 29
Bridge Approach Slab Details-I	Sheet No. 16 of 29
Bridge Approach Slab Details-II	Sheet No. 17 of 29
Bridge Fence Railing Parapet Mounted	Sheet No. 18 of 29
Abutment Repairs	Sheet No. 19 of 29
Abutments	Sheet No. 20 of 29
Abutment Details	Sheet No. 21 of 29
Pier #1	Sheet No. 22 of 29
Pier #2	Sheet No. 23 of 29
HP Pile Details	Sheet No. 24 of 29
Soil Boring Log SB-4	Sheet No. 25 of 29
Soil Boring Log SB-6	Sheet No. 26 of 29
Soil Boring Log SB-5 & Soil Boring Log SB-7	Sheet No. 27 of 29
Soil Boring Log SB-8	Sheet No. 28 of 29
Soil Boring Log SB-9	Sheet No. 29 of 29



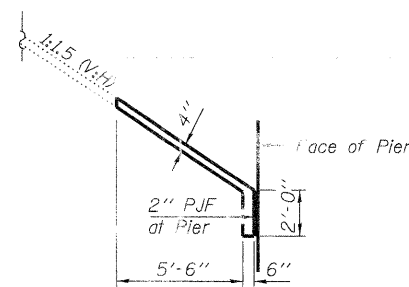
*Passenger train operations only
RAILROAD'S CLEARANCE DIAGRAM

GENERAL NOTES

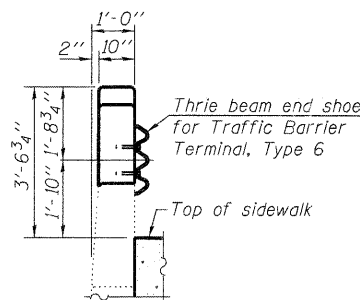
Reinforcement bars shall conform to the requirements of ASTM A 706 Gr 60. See Special Provisions.
 Reinforcement bars designated (E) shall be epoxy coated.
 Plan dimensions and details relative to existing plans are subject to nominal construction variations. The Contractor shall field verify existing dimensions and details affecting new construction and make necessary approved adjustments prior to construction or ordering of materials. Such variations shall not be cause for additional compensation for a change in scope of the work, however, the Contractor will be paid for the quantity actually furnished at the unit price bid for the work.
 Layout of slope protection system may be varied to suit ground conditions in the field as directed by the Engineer.
 If any Excavation is needed behind existing abutment walls it shall be performed before setting the new PPC deck beams. Cost included with Concrete Superstructure.
 The Contractor is advised that the existing PPC deck beams are in a deteriorated condition with reduced load carrying capacity. It is the Contractor's responsibility to account for the condition of the beams when developing construction procedures for removal and replacement of the superstructure.
 Any damage done to the abutments during beam removal shall be repaired by the Contractor. Cost included with Removal of Existing Superstructures.
 If the Contractor's procedures for existing beam removal or placement of new beams involves placement of heavy equipment on the new or existing deck beams, a detailed procedure shall be submitted to the Engineer for approval. The procedure shall include calculations, sealed by an Illinois Licensed Structural Engineer, verifying the structural adequacy of the beams for the proposed loads. Cost included with Precast Prestressed Concrete Deck Beams (17" Depth).
 No drilling will be permitted into the new PPC deck beams.
 The minimum thickness of the Concrete Wearing Surface shall be 5" and shall vary as required to adjust for the new profile grade and beam camber.
 Out to out widths shown for deck and approach slabs are the minimum widths required. Variations in the new deck beams and erection tolerances may result in additional width. The Contractor will be paid for the quantity actually furnished based upon the unit price bid for the work.
 Slipforming of the parapet is not allowed.
 The existing bearing pads at the expansion ends of the deck beams (at the abutments) contain asbestos. See Special Provisions.



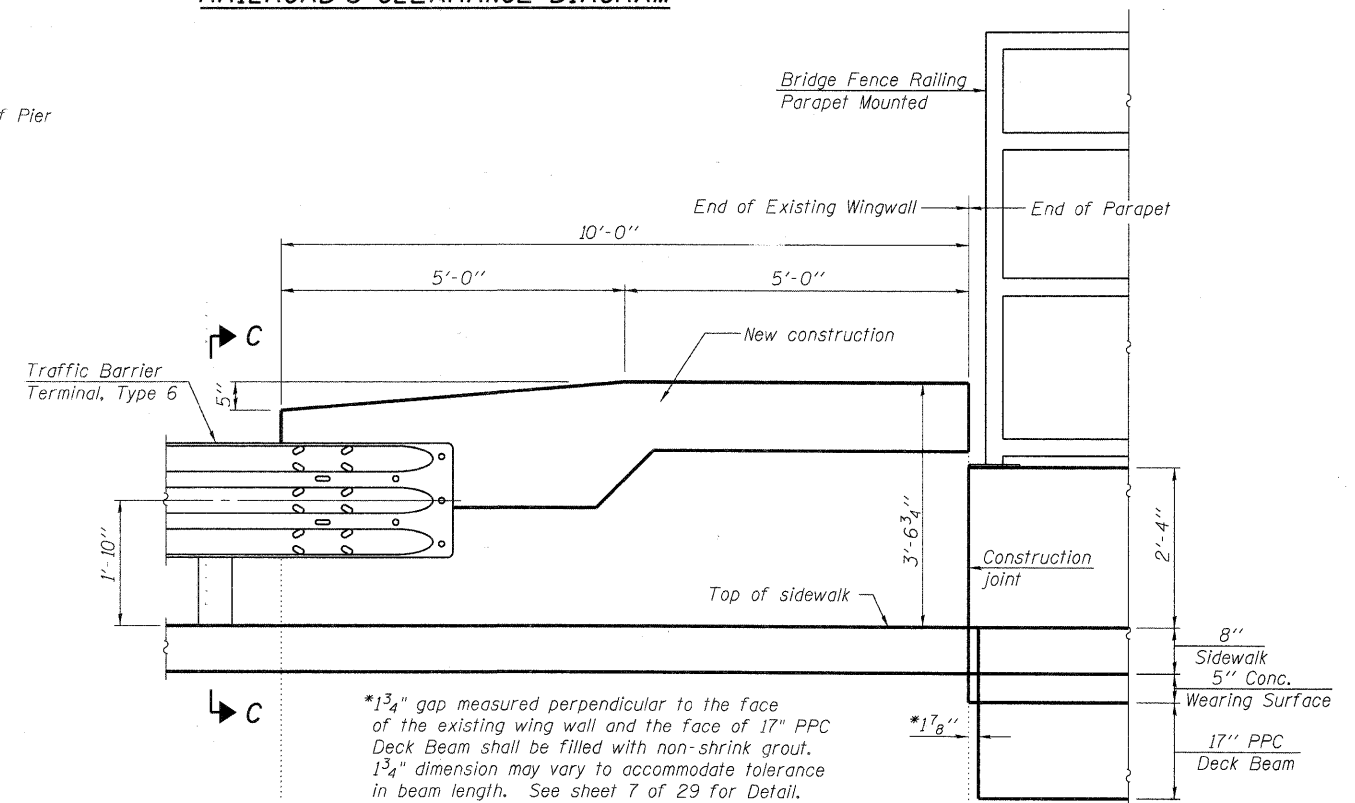
SECTION A-A



SECTION B-B



SECTION C-C



TYPE 6 RAIL ATTACHMENT DETAIL

**GENERAL DATA
STRUCTURE NO. 022-6930**

SHEET NO. 2 29 SHEETS	F.A.U. RTE.	SECTION	COUNTY	TOTAL SHEETS	SHEET NO.
	2651	07-00083-00-BR	DUPAGE	50	16
FED. ROAD DIST. NO. _ ILLINOIS			FED. AID PROJECT		
CONTRACT NO. 63601					