

F.A.U. RTE.	SECTION	COUNTY	TOTAL SHEETS	SHEET NO.
1046	11-00109-00-RS	COOK	20	1
FED. ROAD DIST. NO. 1 ILLINOIS		CONTRACT NO. 63602		

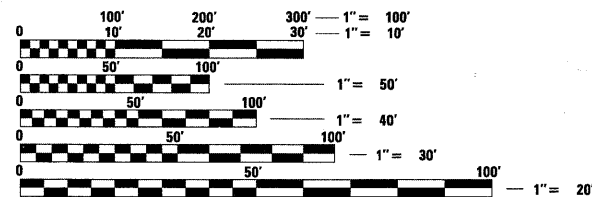
STATE OF ILLINOIS
DEPARTMENT OF TRANSPORTATION
DIVISION OF HIGHWAYS

PLANS FOR PROPOSED FEDERAL AID HIGHWAY

HARRISON STREET (FAU 1046)
DESPLAINES AVE. (FAU 2759) TO HARLEM AVE. (FAP 348)
RESURFACING
SECTION NO. 11-00109-00-RS
PROJECT NO. M-9003(796)
VILLAGE OF FOREST PARK
COOK COUNTY
C-91-449-11

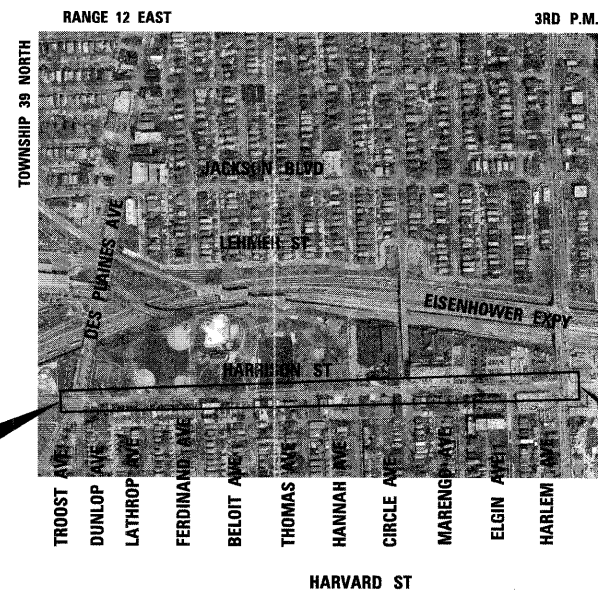
DESCRIPTION	SHEET NO.
TITLE SHEET	1
GENERAL NOTES AND HIGHWAY STANDARDS	2
SUMMARY OF QUANTITIES	3
TYPICAL SECTIONS	4
EXISTING CONDITIONS AND REMOVAL PLAN	5-7
PROPOSED PLAN	8-10
CONSTRUCTION DETAILS	11
DETAILS FOR FRAMES AND LIDS ADJUSTMENT WITH MILLING	12
PAVEMENT PATCHING FOR HMA SURFACED PAVEMENT	13
CURB OR CURB AND GUTTER REMOVAL AND REPLACEMENT	14
BUTT JOINT AND HMA TAPER DETAILS	15
HMA TAPER AT EDGE OF P.C.C. PAVEMENT	16
TRAFFIC CONTROL AND PROTECTION FOR SIDE ROADS, INTERSECTIONS, AND DRIVEWAYS	17
DISTRICT ONE TYPICAL PAVEMENT MARKINGS	18
PAVEMENT MARKING LETTERS AND SYMBOLS FOR TRAFFIC STAGING	19
DISTRICT 1 - DETECTOR LOOP INSTALLATION DETAIL FOR ROADWAY RESURFACING	20

DESIGN DESIGNATION = COLLECTOR
ADT = 5,000 VPD (2008)
POSTED SPEED LIMIT = 25 MPH



FULL SIZE PLANS HAVE BEEN PREPARED USING STANDARD ENGINEERING SCALES. REDUCED SIZED PLANS WILL NOT CONFORM TO STANDARD SCALES. IN MAKING MEASUREMENTS ON REDUCED PLANS, THE ABOVE SCALES MAY BE USED.

J.U.L.I.E.
JOINT UTILITY LOCATION INFORMATION FOR EXCAVATION
1-800-892-0123
OR 811



PROJECT BEGINS
STA. 101 + 78.15

PROJECT ENDS
STA. 131 + 63.23

PROVISO TOWNSHIP

N.T.S.

JAMES F. AMELIO
REGISTERED PROFESSIONAL ENGINEER OF ILLINOIS
062-060779
DATE: 5/25/11
ENGINEER

JAMES F. AMELIO
ILLINOIS REGISTRATION No. 062-060779
EXPIRATION DATE: 11/30/2011

STATE OF ILLINOIS
DEPARTMENT OF TRANSPORTATION
DIVISION OF HIGHWAYS

APPROVED: *[Signature]* MAY 16 2011
VILLAGE ADMINISTRATOR, VILLAGE OF FOREST PARK

PASSED: MAY 25 2011
[Signature] DISTRICT 1 ENGINEER OF LOCAL ROADS & STREETS

RELEASED FOR BID BASED ON LIMITED REVIEW
MAY 25 2011
[Signature] DEPUTY DIRECTOR OF HIGHWAYS, REGION 1 ENGINEER

GROSS LENGTH = 2985.08 FT. = 0.565 MILE
NET LENGTH = 2985.08 FT. = 0.565 MILE

CB CHRISTOPHER B. BURKE ENGINEERING, LTD.
9575 W. Higgins Road, Suite 600
Rosemont, Illinois 60018
(847) 823-0500

PRINTED BY THE AUTHORITY
OF THE STATE OF ILLINOIS

PROFESSIONAL DESIGN FIRM NO.: 184-001175
EXPIRATION DATE: APRIL 30, 2013

CONTRACT NO. 63602

PROGRAM AND OFFICE ENGINEER: CHARLES F. RIDDLE, P.E. 847-705-4406 SCHAMBERG, IL