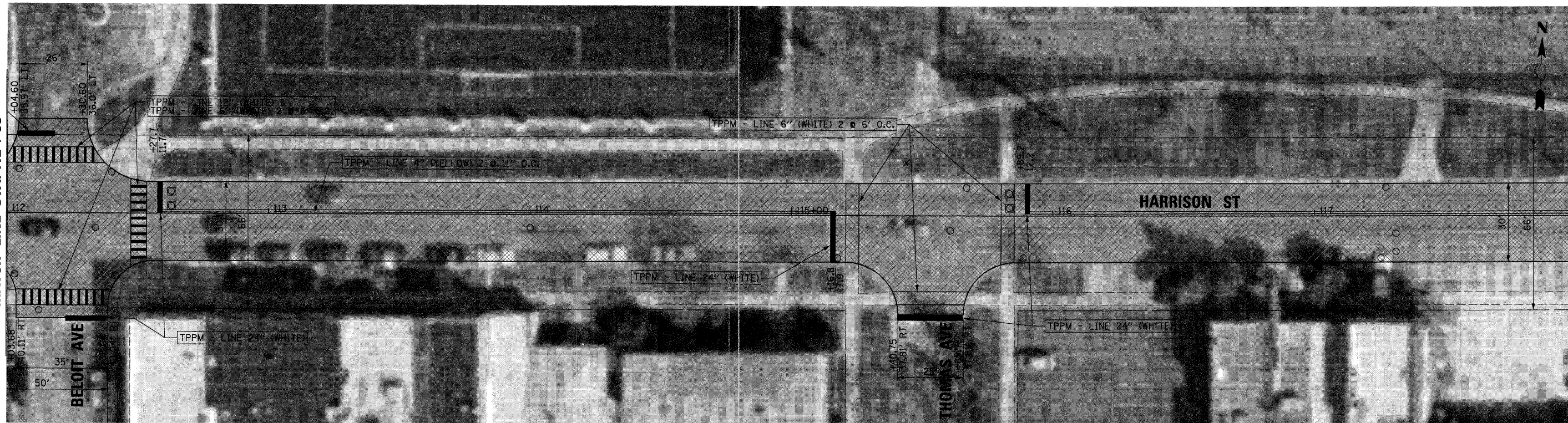
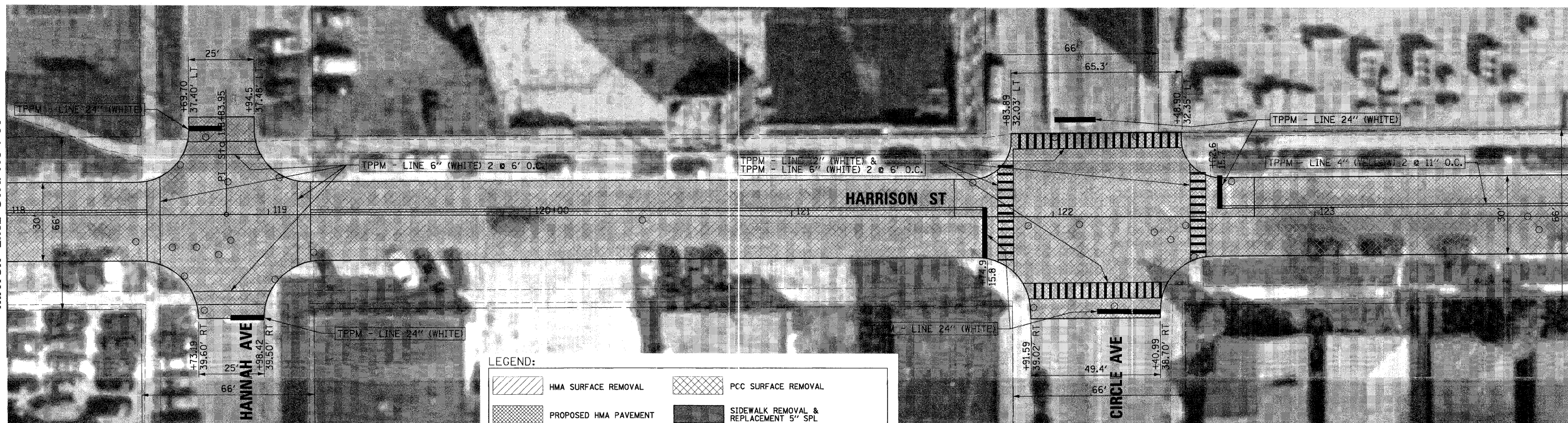


MATCH LINE STA. 112 + 00



MATCH LINE STA. 118 + 00

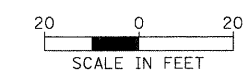
MATCH LINE STA. 118 + 00



MATCH LINE STA. 124 + 00

LEGEND:

	HMA SURFACE REMOVAL		PCC SURFACE REMOVAL
	PROPOSED HMA PAVEMENT		SIDEWALK REMOVAL & REPLACEMENT 5" SPL
	CURB & GUTTER REMOVAL AND REPLACEMENT		STRUCTURE TO BE ADJUSTED
	STRUCTURE TO BE RECONSTRUCTED		STRUCTURE TO BE REMOVED



FILE NAME =	USER NAME = JAMELIO	DESIGNED -	REVISED -
N:\FORESTPARK\023\B0237\Civil\PLN2_002\bg37.sht		DRAWN -	REVISED -
PLOT SCALE = 20'		CHECKED -	REVISED -
PLOT DATE = 5/23/2011		DATE -	REVISED -

**STATE OF ILLINOIS
DEPARTMENT OF TRANSPORTATION**

PROPOSED PLAN

SCALE: SHEET NO. OF SHEETS STA. TO STA.

F.A.U. RTE. 1046	SECTION 11-00109-00-RS	COUNTY COOK	TOTAL SHEETS 20	SHEET NO. 9
				CONTRACT NO. 63602
ILLINOIS FED. AID PROJECT				