

SEC. 11 T. 38 N. R. 11 E. 3RD PM

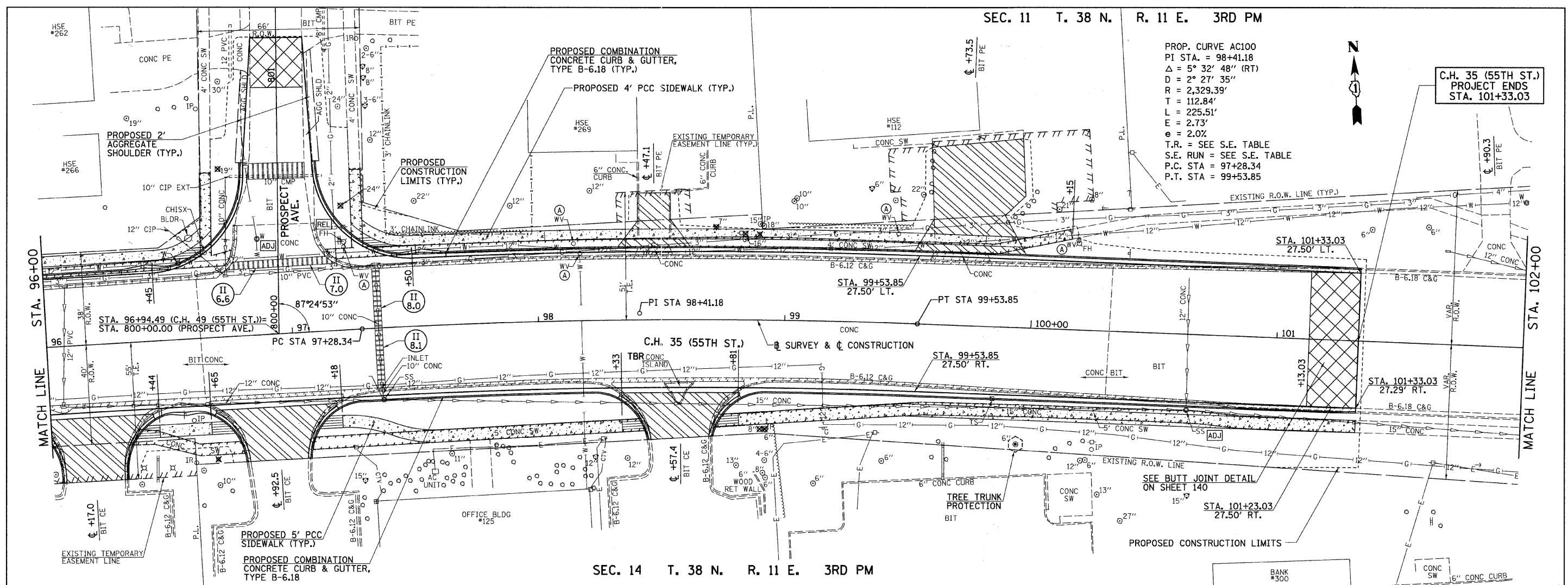
PROP. CURVE AC100
 PI STA. = 98+41.18
 $\Delta = 5^\circ 32' 48''$ (RT)
 $D = 2^\circ 27' 35''$
 $R = 2,329.39'$
 $T = 112.84'$
 $L = 225.51'$
 $E = 2.73'$
 $e = 2.0\%$
 T.R. = SEE S.E. TABLE
 S.E. RUN = SEE S.E. TABLE
 P.C. STA. = 97+28.34
 P.T. STA. = 99+53.85

C.H. 35 (55TH ST.)
 PROJECT ENDS
 STA. 101+33.03

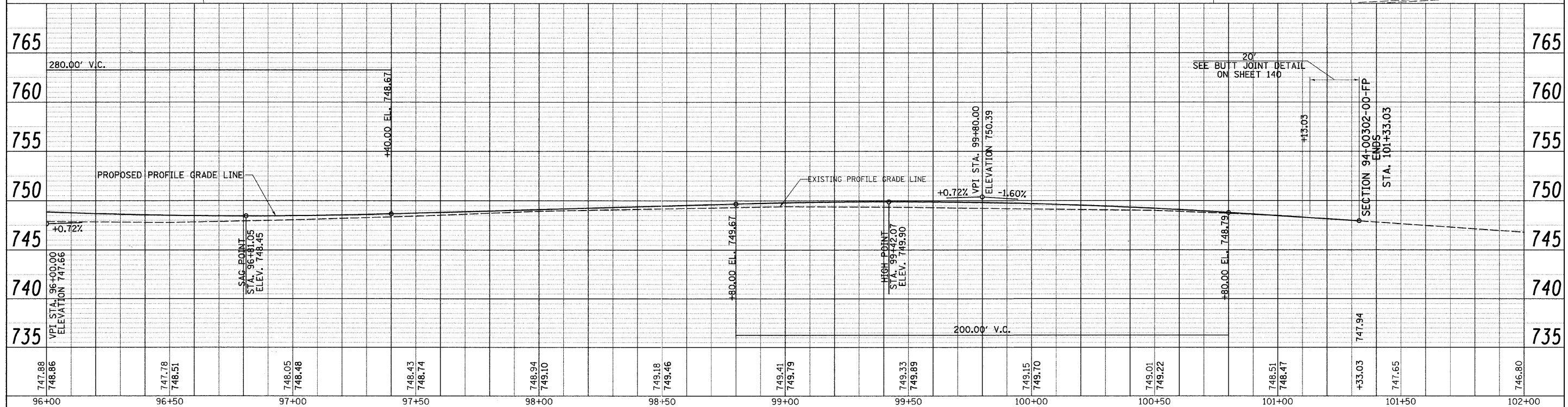


PLAN	SURVEYED	BY	DATE
	PLotted		
	Checked		
	By		
	Checked		
	By		
	Checked		
	By		

PROFILE	SURVEYED	BY	DATE
	Plotted		
	Checked		
	By		
	Checked		
	By		
	Checked		
	By		



SEC. 14 T. 38 N. R. 11 E. 3RD PM



FILE NAME =	USER NAME = shughes	DESIGNED -	REVISED -	STATE OF ILLINOIS DEPARTMENT OF TRANSPORTATION	C.H. 35 (55TH ST.) PLAN & PROFILE		F.A.U. RTE.	SECTION	COUNTY	TOTAL SHEETS	SHEET NO.	
vr\2791\2791p016.dgn		DRAWN -	REVISED -		SCALE: H=20 V=5	SHEET NO. 16 OF 17 SHEETS	STA. 96+00 TO STA. 102+00	1504	94-00302-00-FP	DU PAGE	240	52
		CHECKED -	REVISED -									
		DATE -	REVISED -									