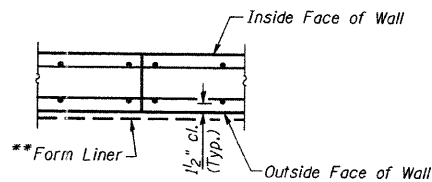
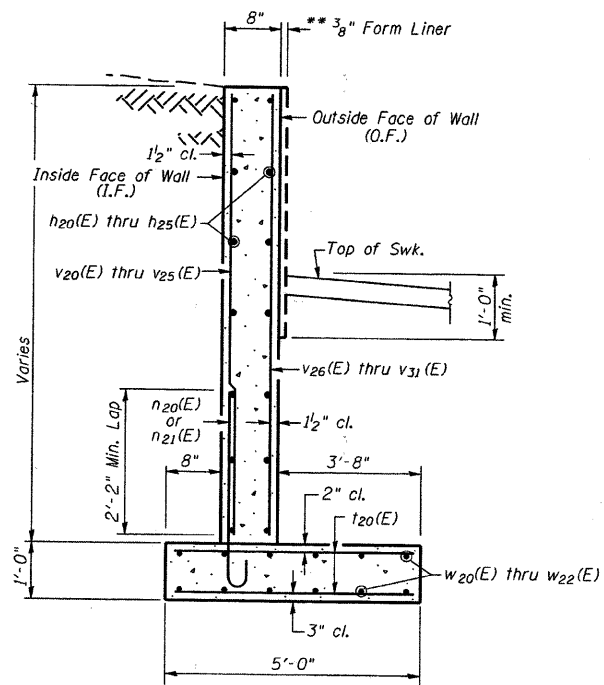


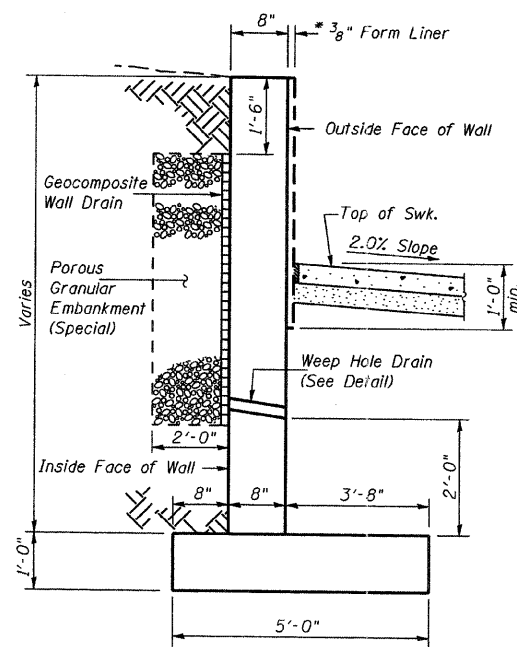
FOOTING STEP



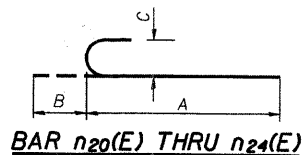
CONSTRUCTION JOINT DETAIL



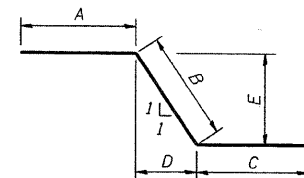
TYPICAL SECTION
(Showing Reinforcement)



TYPICAL SECTION
(Looking East)

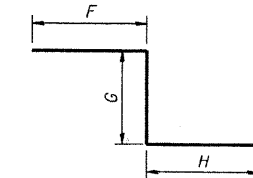


| Bar | A | B | C |
|--------|-------|----|----|
| n20(E) | 4'-9" | 6" | 4" |
| n21(E) | 3'-6" | 6" | 4" |
| n22(E) | 4'-9" | 6" | 4" |
| n23(E) | 5'-3" | 6" | 4" |
| n24(E) | 2'-7" | 6" | 4" |



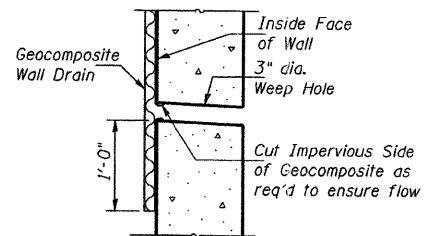
BAR w23(E) THRU w25(E)

| Bar | A | B | C | D | E |
|--------|-------|--------|-------|------------|------------|
| w23(E) | 2'-5" | 3'-10" | 2'-5" | 2'-8 1/2" | 2'-8 1/2" |
| w24(E) | 2'-5" | 4'-10" | 2'-5" | 3'-5" | 3'-5" |
| w25(E) | 2'-5" | 4'-1" | 2'-5" | 2'-10 1/2" | 2'-10 1/2" |



BAR w26(E) THRU w28(E)

| Bar | F | G | H |
|--------|-------|--------|-------|
| w26(E) | 2'-5" | 2'-9" | 2'-5" |
| w27(E) | 2'-5" | 3'-5" | 2'-5" |
| w28(E) | 2'-5" | 2'-11" | 2'-5" |



WEEP HOLE DRAIN DETAIL

**An additional thickness of concrete, in addition to the wall thickness detailed, will be required for the form liner finish. The cost of this additional concrete is included in the cost of Form Liner Textured Surface (Special).

| | |
|----------|-------------------|
| DESIGNED | JOH |
| CHECKED | BAN ¹³ |
| DRAWN | TAC |
| CHECKED | JOH |

2791WALL3-05

BILL OF MATERIAL

| Bar | No. | Size | Length | Shape |
|---------------------------------------|-----|------|---------|--------|
| h20(E) | 70 | #4 | 26'-11" | — |
| h21(E) | 64 | #4 | 29'-11" | — |
| h23(E) | 60 | #4 | 25'-9" | — |
| n20(E) | 51 | #4 | 5'-3" | C |
| n21(E) | 79 | #4 | 4'-0" | C |
| n22(E) | 126 | #5 | 5'-3" | C |
| n23(E) | 51 | #4 | 5'-9" | C |
| n24(E) | 50 | #4 | 3'-1" | C |
| v20(E) | 698 | #6 | 4'-9" | — |
| v20(E) | 51 | #4 | 5'-9" | — |
| v21(E) | 79 | #4 | 5'-8" | — |
| v22(E) | 126 | #4 | 7'-0" | — |
| v24(E) | 51 | #4 | 7'-9" | — |
| v25(E) | 50 | #4 | 6'-9" | — |
| v26(E) | 26 | #4 | 3'-7" | — |
| v27(E) | 40 | #4 | 4'-9" | — |
| v28(E) | 58 | #4 | 6'-1" | — |
| v30(E) | 26 | #4 | 5'-0" | — |
| v31(E) | 24 | #4 | 6'-9" | — |
| w20(E) | 48 | #4 | 25'-9" | — |
| w21(E) | 84 | #4 | 30'-0" | — |
| w22(E) | 24 | #4 | 23'-3" | — |
| w23(E) | 7 | #4 | 8'-8" | — |
| w24(E) | 7 | #4 | 9'-8" | — |
| w25(E) | 7 | #4 | 8'-11" | — |
| w26(E) | 7 | #4 | 7'-7" | — |
| w27(E) | 7 | #4 | 8'-3" | — |
| w28(E) | 7 | #4 | 7'-9" | — |
| Structure Excavation | | | Cu. Yd. | 710 |
| Concrete Structures | | | Cu. Yd. | 113.9 |
| Reinforcement Bars, Epoxy Coated | | | Pound | 15,250 |
| Protective Coat | | | Sq. Yd. | 466 |
| Geocomposite Wall Drain | | | Sq. Yd. | 126 |
| Porous Granular Embankment (Special) | | | Cu. Yd. | 84 |
| Form Liner Textured Surface (Special) | | | Sq. Ft. | 1,128 |

* Apply Protective Coat to Inside Face, Outside Face and top of wall.
Notes:
Reinforcement bars designated (E) shall be epoxy coated.
Bars indicated thus 12x4-#5 etc. indicates 12 lines of bars with 4 lengths per line.

Max. Applied Bearing Pressure: = 1.83 ksf

RETAINING WALL #3 DETAILS
C.H. 35 (55TH STREET)
SECTION 94-00302-00-FP
DU PAGE COUNTY
STA. 91+00.00 TO STA. 94+45.00

| | | | | | | |
|---|-------------------------|----------|----------------|--------------------|------------------|-----------|
| HUTCHISON ENGINEERING, INC. Jacksonville & Shorewood, Illinois Date: 2011 | SHEET NO. 5 5 SHEETS | RTE. NO. | SECTION | COUNTY | TOTAL SHEETS | SHEET NO. |
| | | CH 35 | 94-00302-00-FP | DU PAGE | 240 | 154 |
| | | | | CONTRACT NO. 63609 | | |
| | | | | ILLINOIS | FED. AID PROJECT | |