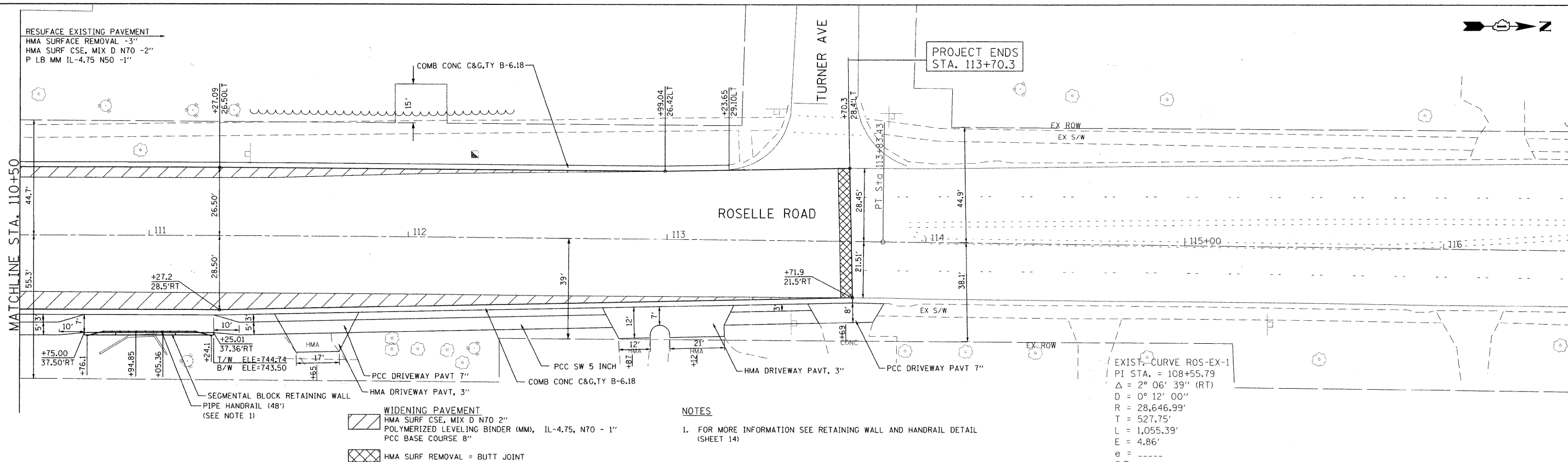


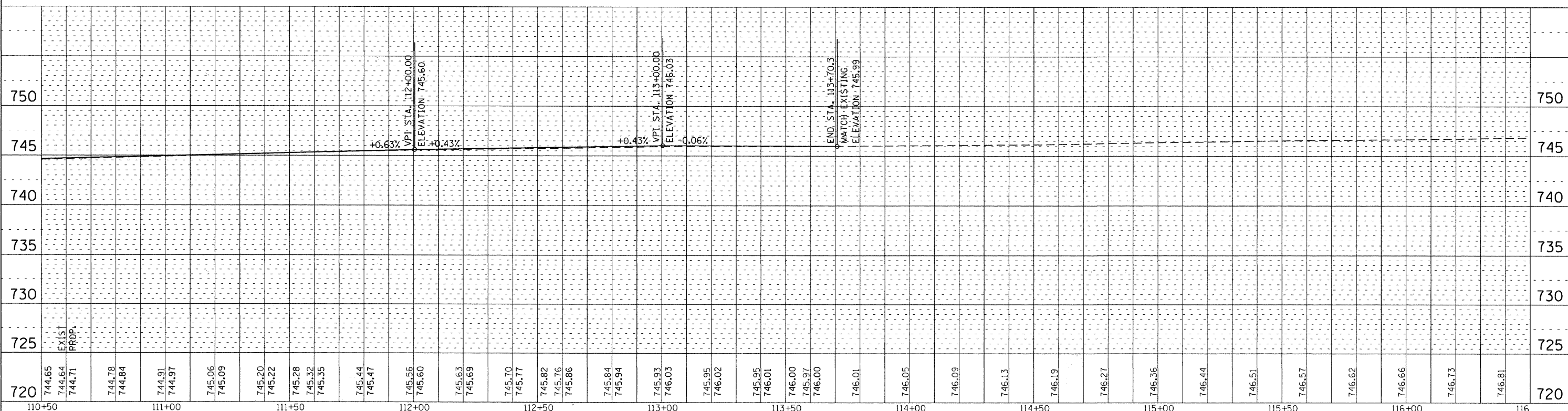
PLAN	REVISIONS	BY	DATE
NO.	NO.		
NOTE BOOK	ALIGNED CHECKED		
	CADD FILE NAME		

PROFILE	REVISIONS	BY	DATE
NO.	NO.		
NOTE BOOK	GRADES CHECKED		
	STRUCTURE NOTATIONS CHKD		

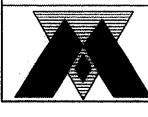
FILE NAME = P:\2010\ME10015_Roselle_DPCDOT\CADD\Shets\Roselle-sht-PP02.dgn
 PLOT SCALE = 28.8000' / IN.
 USER NAME = Millennium Professional Services



- NOTES**
- FOR MORE INFORMATION SEE RETAINING WALL AND HANDRAIL DETAIL (SHEET 14)
- WIDENING PAVEMENT
 HMA SURF CSE, MIX D N70 2"
 POLYMERIZED LEVELING BINDER (MM), IL-4.75, N70 - 1"
 PCC BASE COURSE 8"
 - HMA SURF REMOVAL = BUTT JOINT



DESIGNED - TVN	REVISED -	DUPAGE COUNTY DEPARTMENT OF TRANSPORTATION	ROSELLE RD. & WALNUT ST. INTERSECTION IMPROVEMENTS	PROPOSED PLAN & PROFILE	F.A.P. RTE.	SECTION	COUNTY	TOTAL SHEETS	SHEET NO.	
DRAWN - TVN	REVISED -				364	07-00184-12-CH	DUPAGE	49	12	
CHECKED - RPD	REVISED -				CONTRACT NO. 63611					
DATE - 5/18/2011	REVISED -				FED. ROAD DIST. NO. 1 ILLINOIS FED. AID PROJECT					



200 22ND Street, Suite 216, Lombard, IL 60148
 630.705.0110 voice, 630.839.2566 fax
 WWW.MPS-IL.COM
MILLENNIA PROFESSIONAL SERVICES

SCALE: 1"=20'
 SHEET NO. 2 OF 3 SHEETS
 STA. 110+50 TO STA. 113+70.3