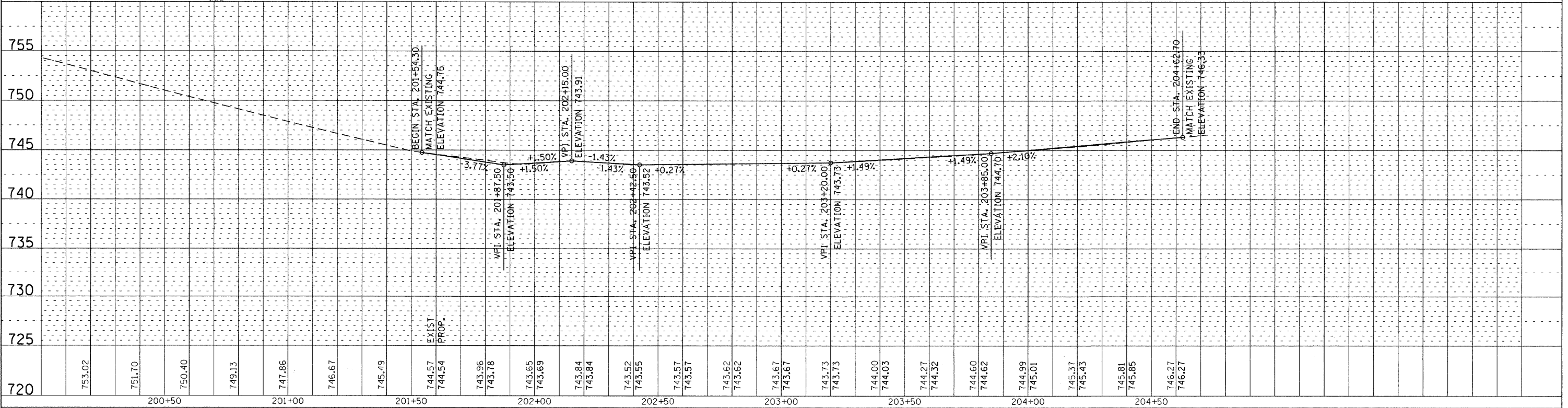
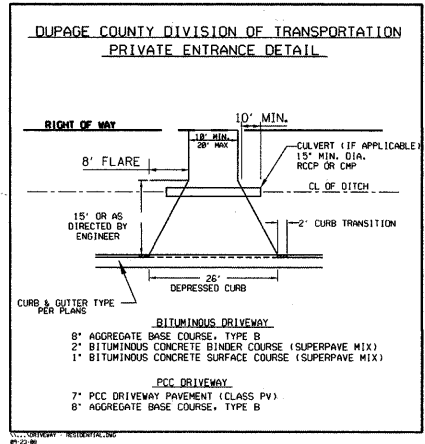


DATE	
BY	
REVISIONS	
PLAN	NO.
NO.	
NO.	
NO.	
NO.	
NO.	
NO.	
NO.	

DATE	
BY	
REVISIONS	
PROFILE	NO.
NO.	
NO.	
NO.	
NO.	
NO.	
NO.	
NO.	

FILE NAME = P:\2010\ME10015.Roselle.DPCDOT\CADD\Shts\Roselle-shr-PP03.dgn
 PLOT SCALE = 28.80000 / 1" = 100'-0"
 USER NAME = Millennium Professional Services



DESIGNED	TVN	REVISED	
DRAWN	TVN	REVISED	
CHECKED	RPD	REVISED	
DATE	5/18/2011	REVISED	

DUPAGE COUNTY DEPARTMENT OF TRANSPORTATION		ROSELLE RD. & WALNUT ST. INTERSECTION IMPROVEMENTS		PROPOSED PLAN & PROFILE	
SCALE: 1"=20'	SHEET NO. 3 OF 3 SHEETS	STA. 203+00	TO STA. 204+62.7	F.A.P. RTE. 364	SECTION 07-00184-12-CH
				COUNTY	DUPAGE
				TOTAL SHEETS	49
				SHEET NO.	13
CONTRACT NO. 63611					



200 22ND Street, Suite 216, Lombard, IL 60148
 630.705.0110 voice, 630.839.2566 fax
 WWW.MPS-IL.COM

MILLENNIA PROFESSIONAL SERVICES

FED. ROAD DIST. NO. 1		ILLINOIS FED. AID PROJECT	
P:\2010\ME10015.Roselle.DPCDOT\CADD\Shts\Roselle-shr-PP03.dgn			