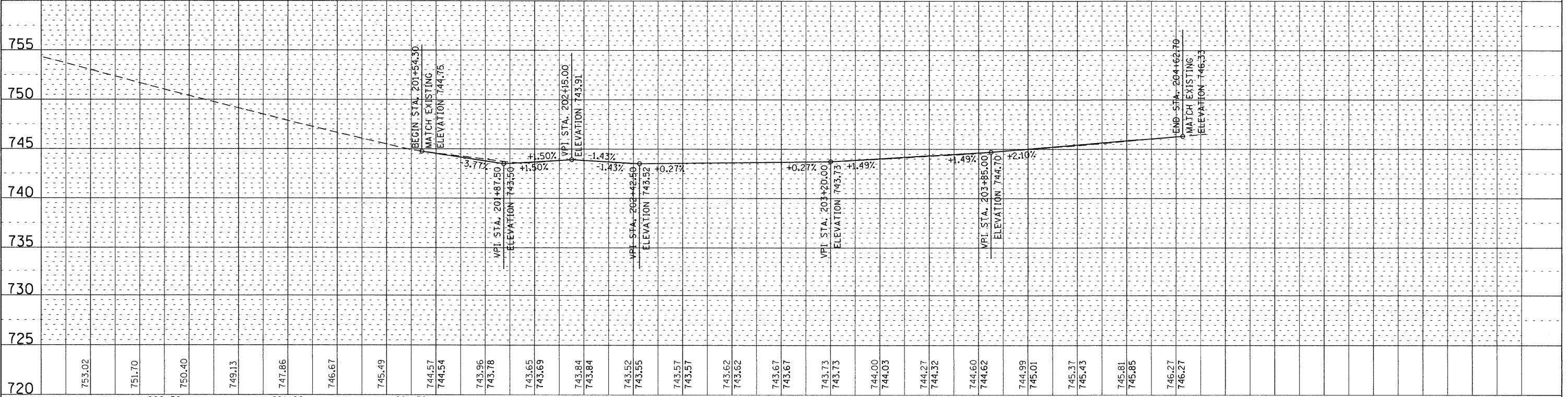
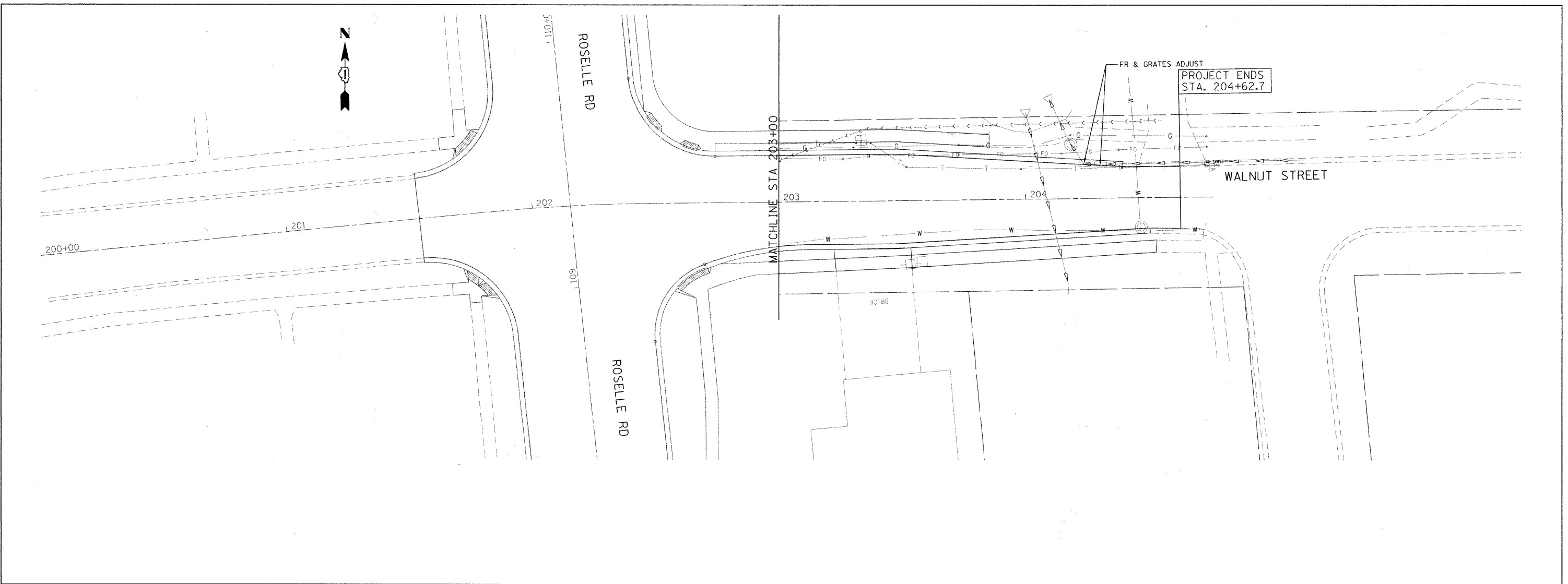


PLAN	REVISIONS	BY	DATE
NO.	NO.		
NOTE BOOK	ALIGNED CHECKED		
	PLOTTED		
	CADD FILE NAME		

PROFILE	REVISIONS	BY	DATE
NO.	NO.		
NOTE BOOK	GRADES CHECKED		
	STRUCTURE NOTATIONS CHKD		

FILE NAME = P:\2010\ME\0015.Roselle.DPCDOT\CADD\Shts\Roselle-ht-DU03.dwg
 PLOT SCALE = 26.0000 / IN.
 USER NAME = Millennia Professional Services



 200 22ND Street, Suite 216, Lombard, IL 60148 630.705.0110 voice, 630.839.2566 fax WWW.MPS-IL.COM	DESIGNED - TVN	REVISED -	DUPAGE COUNTY DEPARTMENT OF TRANSPORTATION	ROSELLE RD. & WALNUT ST. DRAINAGE AND UTILITIES PLAN	F.A.P. RTE. 364	SECTION 07-00184-12-CH	COUNTY DUPAGE	TOTAL SHEETS 49	SHEET NO. 22
	DRAWN - TVN	REVISED -			CONTRACT NO. 63611 FED. ROAD DIST. NO. 1 ILLINOIS FED. AID PROJECT				
	CHECKED - RPD	REVISED -			SCALE: 1"=20' SHEET NO. 3 OF 3 SHEETS STA. 203+00 TO STA. 204+62.7				
	DATE - 5/18/2011	REVISED -			P:\2010\ME\0015.Roselle.DPCDOT\CADD\Shts\Roselle-ht-DU03.dwg				