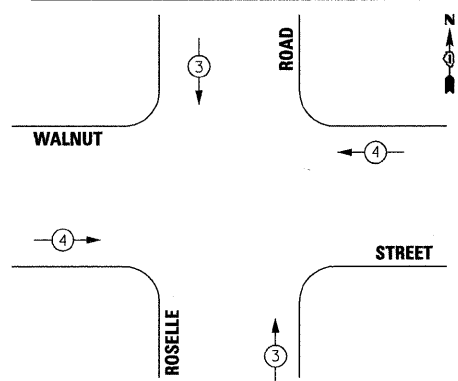


OVERLAP LETTER D = PERMISSIVE PHASE 8 + PROTECTED PHASE 1

PHASE DESIGNATION DIAGRAM

EMERGENCY VEHICLE PREEMPTION SEQUENCE

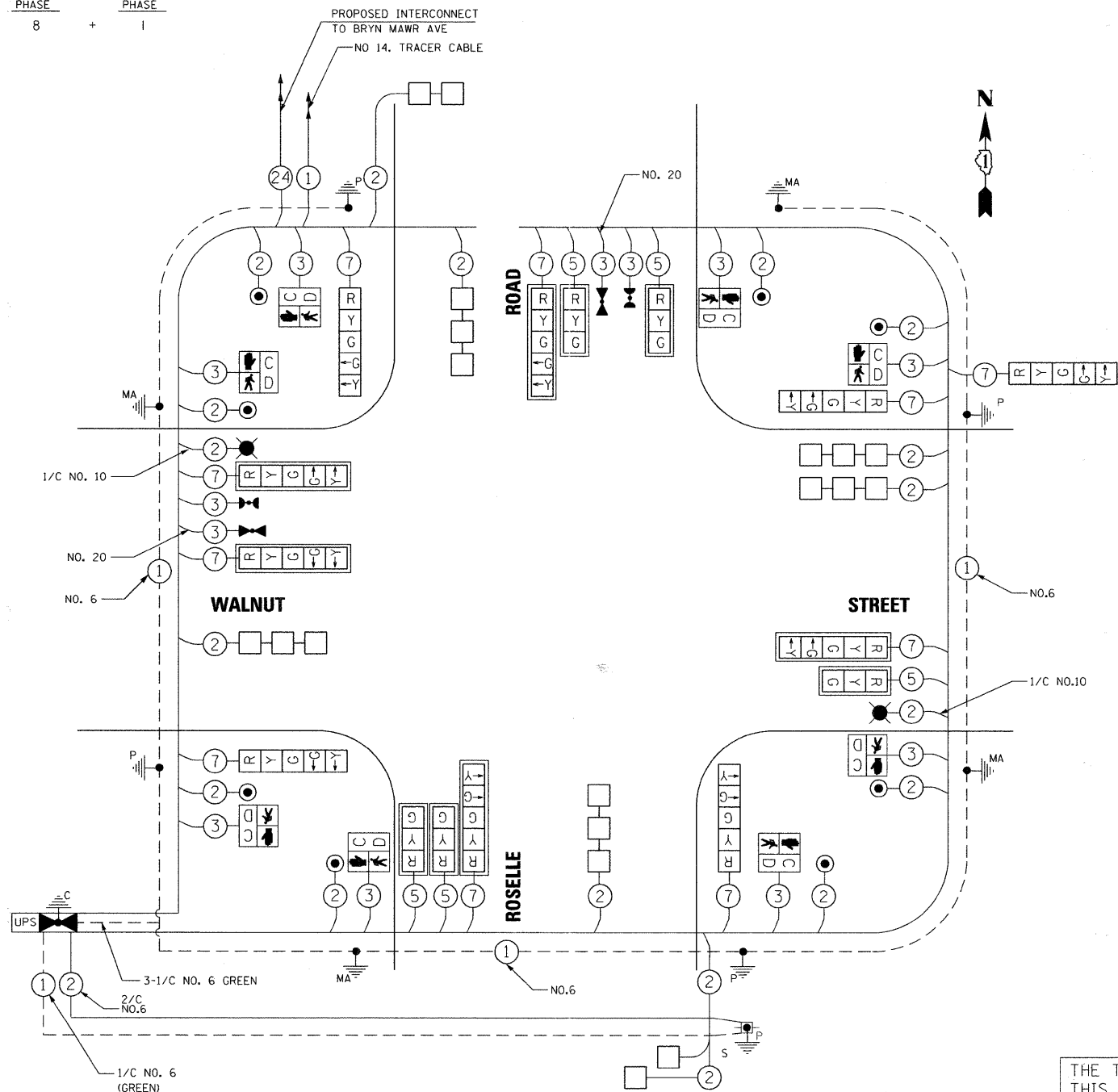


PROPOSED EMERGENCY VEHICLE PREEMPTORS		
EMERGENCY VEHICLE PREEMPTOR	3	4
MOVEMENT	↑↓	→←

HIGHWAY LIGHTING					TOTAL WATTAGE
TYPE	NO. OF LAMPS	WATTAGE INCAND.	L.E.D.	OPERATION	
CONTROLLER	1	100	100	1.00	100
LUMINAIRE	2		310	0.45	279

I.D.O.T TRAFFIC SIGNAL INSTALLATION ELECTRICAL SERVICE REQUIREMENTS					TOTAL WATTAGE
TYPE	NO. OF LAMPS	WATTAGE INCAND.	L.E.D.	OPERATION	
SIGNAL (RED)	14	135	17	0.50	119
(YELLOW)	14	135	25	0.25	87.5
(GREEN)	14	135	15	0.25	52.5
ARROW	4	135	12	0.10	4.8
PED. SIGNAL	8	90	25	1.00	200
CONTROLLER	1	100	100	1.00	100
ILLUM. SIGN	3	84	120	0.05	18
VIDEO VEH. SENSOR		15	15	1.00	
FLASHER				0.50	
TOTAL					563.8

ILLINOIS DEPARTMENT OF TRANSPORTATION
 DIVISION OF HIGHWAY/DISTRICT 1
 201 CENTER CT/SCHAUMBURG, IL 60196-1096
 ENERGY SUPPLY - CONTACT: CURTIS TOPPS
 PHONE: 630-619-4356
 COMPANY: COMMONWEALTH EDISON



CABLE PLAN

SCHEDULE OF QUANTITIES

ITEM	UNIT	QUANTITY
SERVICE INSTALLATION - POLE MOUNTED	EACH	1
CONDUIT IN TRENCH, 1" DIA., GALVANIZED STEEL	FOOT	43
CONDUIT IN TRENCH, 2" DIA., GALVANIZED STEEL	FOOT	519
CONDUIT IN TRENCH, 2 1/2" DIA., GALVANIZED STEEL	FOOT	30
CONDUIT IN TRENCH, 3" DIA., GALVANIZED STEEL	FOOT	58
CONDUIT IN TRENCH, 4" DIA., GALVANIZED STEEL	FOOT	10
CONDUIT PUSHED, 1" DIA., GALVANIZED STEEL	FOOT	87
CONDUIT PUSHED, 2" DIA., GALVANIZED STEEL	FOOT	114
CONDUIT PUSHED, 2 1/2" DIA., GALVANIZED STEEL	FOOT	12
CONDUIT PUSHED, 3" DIA., GALVANIZED STEEL	FOOT	6
CONDUIT PUSHED, 4" DIA., GALVANIZED STEEL	FOOT	197
HANDHOLE	EACH	6
DOUBLE HANDHOLE	EACH	2
ELECTRIC CABLE IN CONDUIT, 600V (EPR-TYPE RHW) 1/C NO. 6	FOOT	196
ELECTRIC CABLE IN CONDUIT, 600V (EPR-TYPE RHW) 2-1/C NO. 10	FOOT	359
TRENCH AND BACKFILL FOR ELECTRICAL WORK	FOOT	660
LUMINAIRE, SODIUM VAPOR, HORIZONTAL MOUNT, 310 WATT	EACH	2
FULL-ACTUATED CONTROLLER AND TYPE IV CABINET, SPECIAL UNINTERRUPTIBLE POWER SUPPLY	EACH	1
TRANSCEIVER - FIBER OPTIC	EACH	1
ELECTRIC CABLE IN CONDUIT, SIGNAL, NO. 14 2C	FOOT	2982
ELECTRIC CABLE IN CONDUIT, SIGNAL, NO. 14 3C	FOOT	1541
ELECTRIC CABLE IN CONDUIT, SIGNAL, NO. 14 5C	FOOT	798
ELECTRIC CABLE IN CONDUIT, SIGNAL, NO. 14 7C	FOOT	1704
ELECTRIC CABLE IN CONDUIT, LEAD-IN, NO. 14 1 PAIR	FOOT	4197
ELECTRIC CABLE IN CONDUIT, SERVICE, NO. 6 2 C	FOOT	96
ELECTRIC CABLE IN CONDUIT, EQUIPMENT GROUNDING CONDUCTOR, NO. 6 1C	FOOT	534
TRAFFIC SIGNAL POST, GALVANIZED STEEL 16 FT.	EACH	4
STEEL MAST ARM ASSEMBLY AND POLE, 26 FT.	EACH	1
STEEL MAST ARM ASSEMBLY AND POLE, 34 FT.	EACH	1
STEEL COMBINATION MAST ARM ASSEMBLY AND POLE 34 FT.	EACH	1
STEEL COMBINATION MAST ARM ASSEMBLY AND POLE 38 FT.	EACH	1
CONCRETE FOUNDATION, TYPE A	FOOT	16
CONCRETE FOUNDATION, TYPE C	FOOT	4
CONCRETE FOUNDATION, TYPE E 30-INCH DIAMETER	FOOT	10
CONCRETE FOUNDATION, TYPE E 36-INCH DIAMETER	FOOT	33
SIGNAL HEAD, LED, 1-FACE, 3-SECTION, MAST-ARM MOUNTED	EACH	5
SIGNAL HEAD, LED, 1-FACE, 5-SECTION, BRACKET MOUNTED	EACH	3
SIGNAL HEAD, LED, 1-FACE, 5-SECTION, MAST-ARM MOUNTED	EACH	5
SIGNAL HEAD, LED, 2-FACE, 5-SECTION, BRACKET MOUNTED	EACH	1
PEDESTRIAN SIGNAL HEAD, LED, 1-FACE, BRACKET MOUNTED WITH COUNTDOWN TIMER	EACH	8
TRAFFIC SIGNAL BACKPLATE, LOUVERED, ALUMINUM	EACH	10
INDUCTIVE LOOP DETECTOR	EACH	8
DETECTOR LOOP, TYPE 1	FOOT	479
CONFIRMATION BEACON	EACH	2
LIGHT DETECTOR	EACH	2
LIGHT DETECTOR AMPLIFIER	EACH	1
PEDESTRIAN PUSH-BUTTON	EACH	8
EMERGENCY VEHICLE PRIORITY SYSTEM DUEL DETECTOR UNIT	EACH	2
LIGHTING CONTROLLER, SPECIAL	EACH	1
ELECTRIC CABLE IN CONDUIT NO. 20 3/C, TWISTED, SHIELDED	FOOT	373
ILLUMINATED STREET NAME SIGN	EACH	3
OPTIMIZE TRAFFIC SIGNAL SYSTEM	EACH	1

THE TRAFFIC SIGNAL CONTROL EQUIPMENT FOR THIS SIGNAL SHALL BE "ECONOLITE" TO MATCH THE EXISTING ADJACENT SYSTEM.

FILE NAME: P:\2010\ME\10015_Roselle\DP\CDOT\CADD\Sheet\Roselle-SHT-1583-02.dgn
 PLOT SCALE: 20/0000 / IN.
 USER NAME: Millennium Professional Services

DESIGNED - CJD	REVISED -
DRAWN - CJD	REVISED -
CHECKED - TVN	REVISED -
DATE - 5/20/2011	REVISED -

DUPAGE COUNTY DEPARTMENT OF TRANSPORTATION

ROSELLE RD. & WALNUT ST. INTERSECTION IMPROVEMENTS

SCHEDULE OF QUANTITIES, CABLE PLAN, PHASE DESIGNATION DIAGRAM, AND EMERGENCY VEHICLE PREEMPTION SEQUENCE

F.A.P. RTE. 364	SECTION 07-00184-12-CH	COUNTY DUPAGE	TOTAL SHEETS 49	SHEET NO. 33
CONTRACT NO. 63611				
FED. ROAD DIST. NO. 1 ILLINOIS FED. AID PROJECT				

P:\2010\ME\10015_Roselle\DP\CDOT\CADD\Sheet\Roselle-SHT-1583-02.dgn