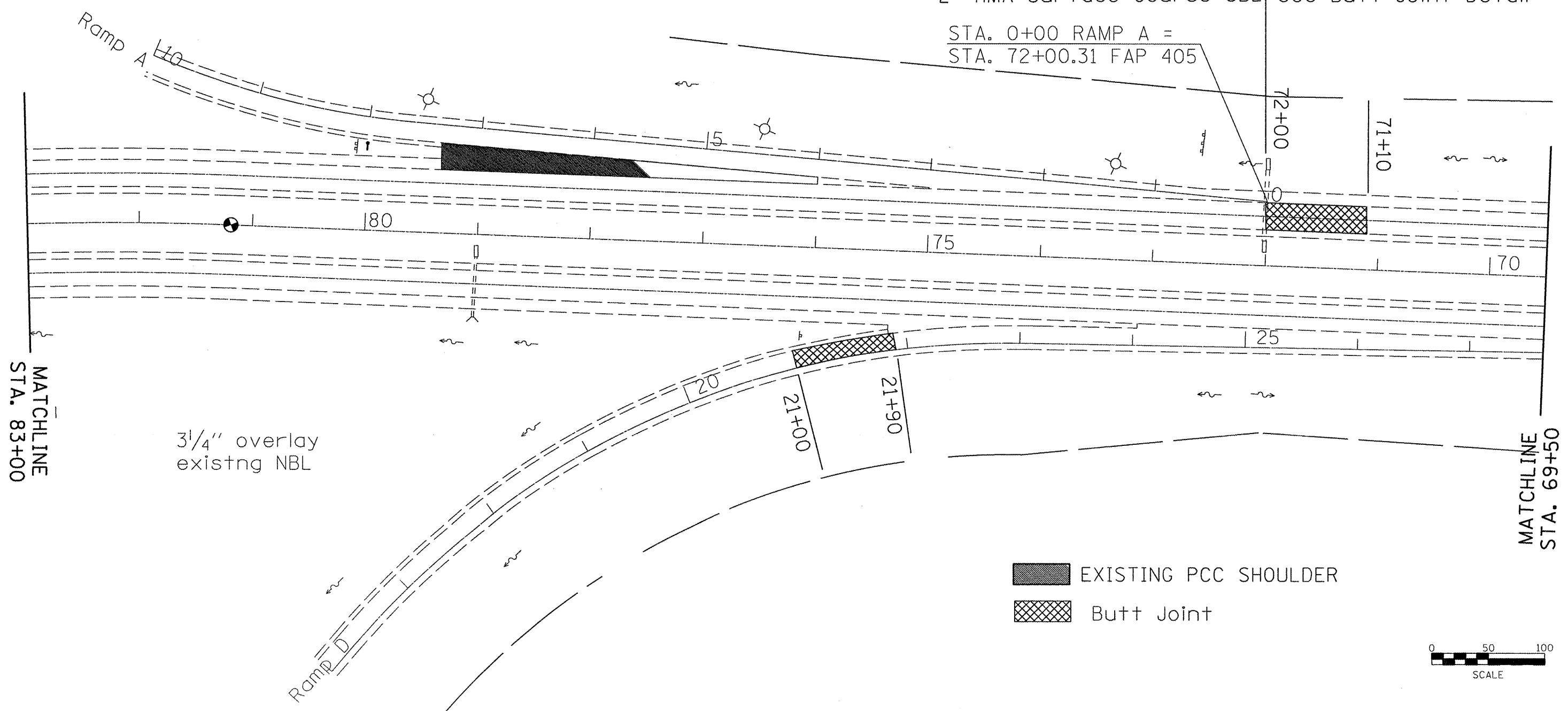


2" HMA Surface Removal  
HMA Surface Course 1 1/2"  
HMA Binder Course 2 1/4"

2" HMA Surface Removal  
2" HMA Surface Course SBL

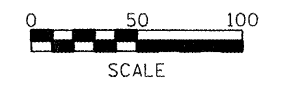
90' (480:1 taper)  
butt joint for binder  
See Butt Joint Detail

STA. 0+00 RAMP A =  
STA. 72+00.31 FAP 405



EXISTING PCC SHOULDER

Butt Joint



PLOT DATE = 5/11/2011  
FILE NAME = general.dgn  
PLOT SCALE = 90.9091' / in.  
USER NAME = AdedeSA

FILE NAME = general.dgn	USER NAME = AdedeSA	DESIGNED -	REVISED -
		DRAWN -	REVISED -
		CHECKED -	REVISED -
		DATE -	REVISED -

STATE OF ILLINOIS  
DEPARTMENT OF TRANSPORTATION

PLAN SHEET

SCALE: SHEET NO. OF SHEETS STA. TO STA.

F.A.P. RTE. 318	SECTION (72-7)RS-1	COUNTY PEORIA	TOTAL SHEETS 32	SHEET NO. 16
CONTRACT NO. 68673				ILLINOIS FED. AID PROJECT