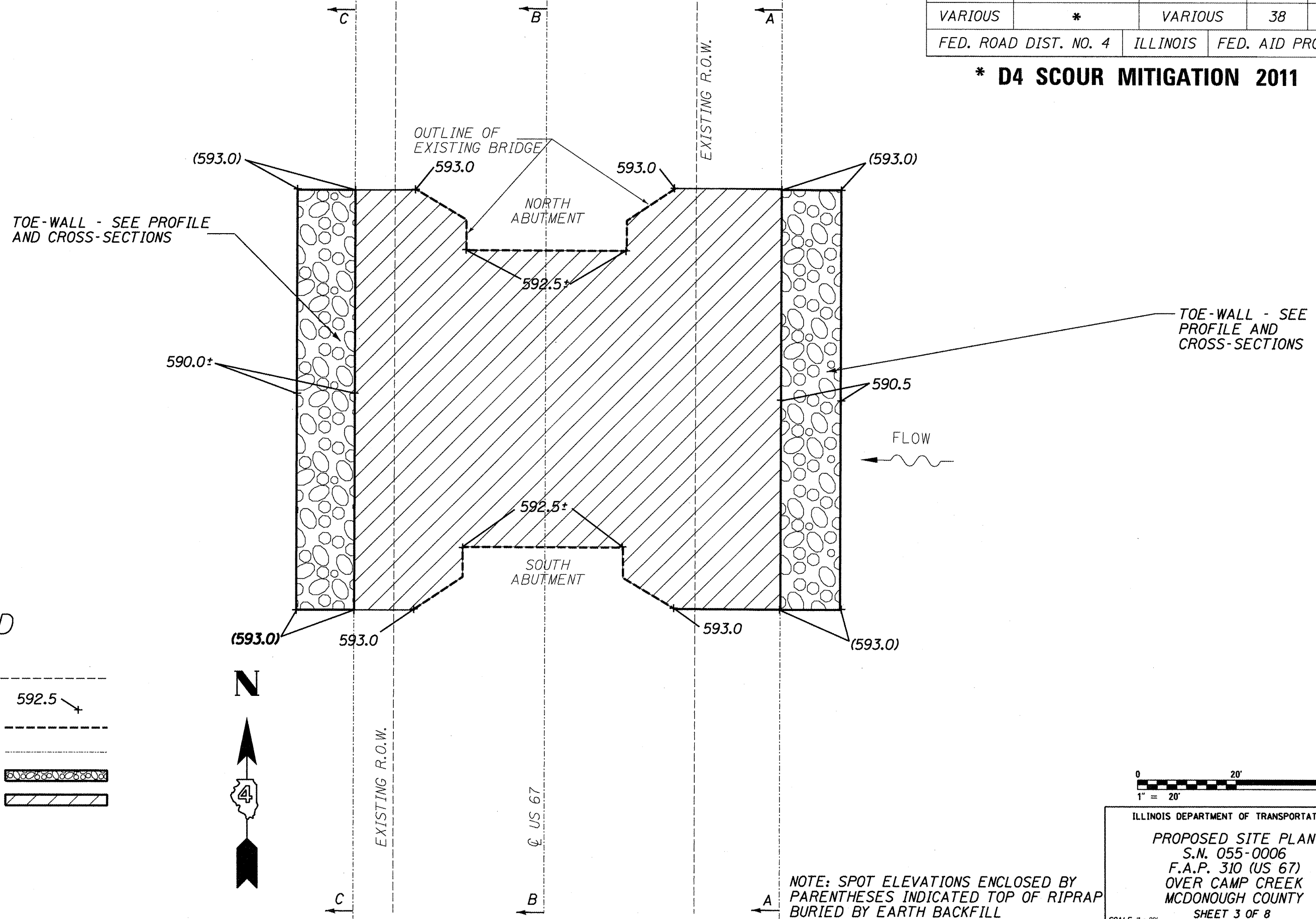


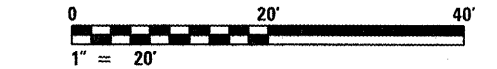
ROUTE NO.	SECTION	COUNTY	TOTAL SHEETS	SHEET NO.
VARIOUS	*	VARIOUS	38	7
FED. ROAD DIST. NO. 4		ILLINOIS	FED. AID PROJECT	

*** D4 SCOUR MITIGATION 2011**



LEGEND

- EXISTING R.O.W.
- PROPOSED SPOT ELEVATION 592.5
- CONCRETE ABUTMENT
- STREAM CENTERLINE
- RIPRAP TOE-WALL
- STONE RIPRAP, CL. A5



ILLINOIS DEPARTMENT OF TRANSPORTATION
 PROPOSED SITE PLAN
 S.N. 055-0006
 F.A.P. 310 (US 67)
 OVER CAMP CREEK
 MCDONOUGH COUNTY
 SHEET 3 OF 8
 SCALE: 1" = 20'