

BENCHMARK: CHISELED "C" SET IN CONCRETE  
TOP OF SE. SIDE OF S. PARAPET  
WALL OF S.N. 090-100  
ELEV. = 100.00 FT. (ASSUMED)

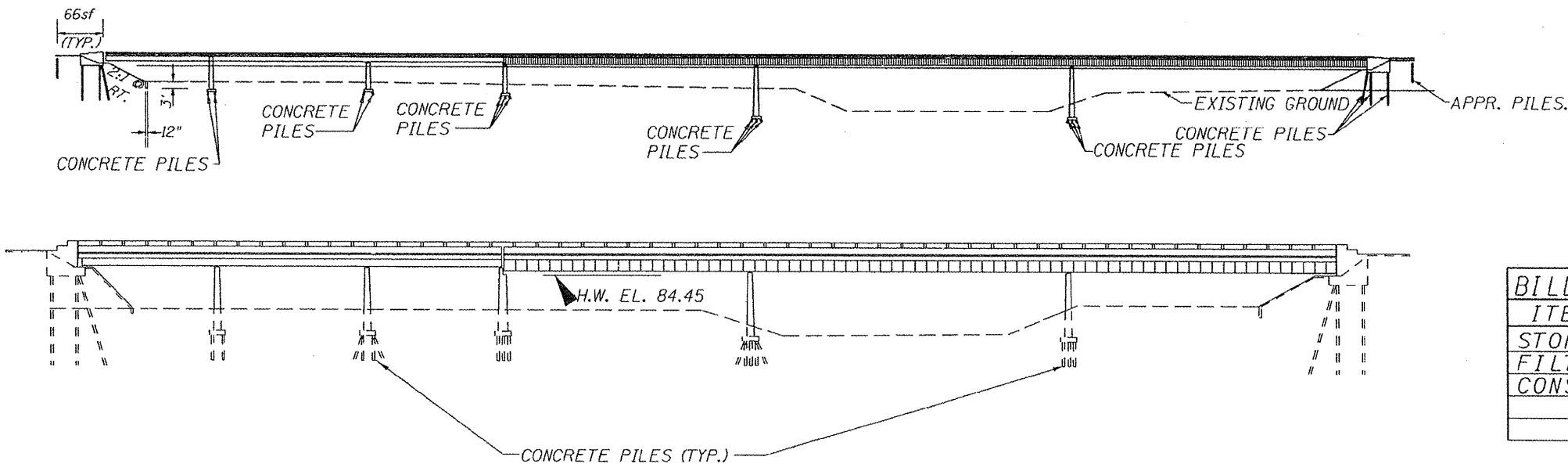
EXISTING STRUCTURES: SN 090-0092 AND 090-0100 ARE 42'-0" WIDE BY 549'-9" LONG  
SIX-SPAN R.C. DECK STRUCTURE STEEL GIRDER SUPERSTRUCTURES WITH R.C. CLOSED  
ABUTMENTS AND PIERS.

ROUTE NO.	SECTION	COUNTY	TOTAL SHEETS	SHEET NO.
VAR	*	VAR	38	29
FED. ROAD DIST. NO. 4		ILLINOIS	FED. AID PROJECT	

**\* D4 SCOUR MITIGATION 2011**

INDEX OF SHEETS

SHEET NUMBER	DESCRIPTION
1	GENERAL PLAN AND ELEVATION, SUMMARY OF QUANTITIES, LOCATION MAP
2-4	SITE PLAN
5-8	SITE CROSS SECTIONS



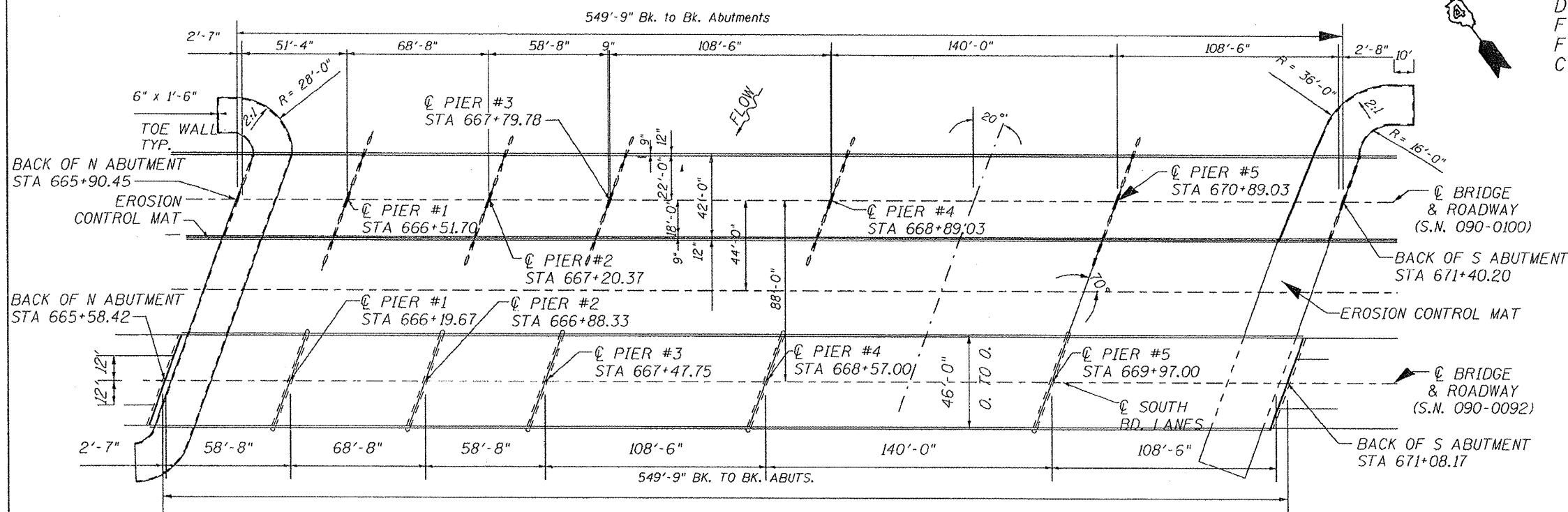
ELEVATION

BILL OF MATERIALS

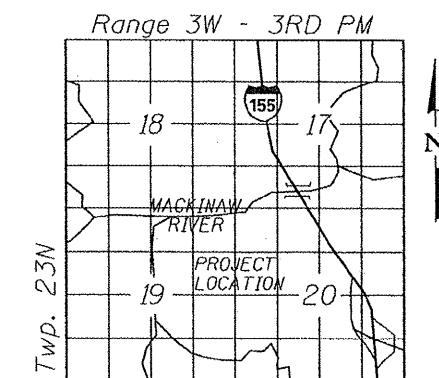
ITEM	UNIT	TOTAL
STONE RIPRAP, CLASS A5	TONS	566
FILTER FABRIC	SQ YD	332
CONSTRUCTION ACCESS	EACH	1

WATERWAY/SCOUR INFORMATION

DESIGN FLOOD	100 YRS
DRAINAGE AREA	990.1 SQ MI
FLOW	44,350 CFS
FLOW DEPTH	17.6 FT
CONTRACTION SCOUR DEPTH	9 FT



PLAN  
EXISTING BRIDGE



LOCATION SKETCH

ILLINOIS DEPARTMENT OF TRANSPORTATION  
GENERAL PLAN & ELEVATION  
S.N. 090-0092/0100  
F.A.I. 155 (I-155)  
OVER MACKINAW RIVER  
TAEWELL COUNTY  
SHEET 1 OF 8