

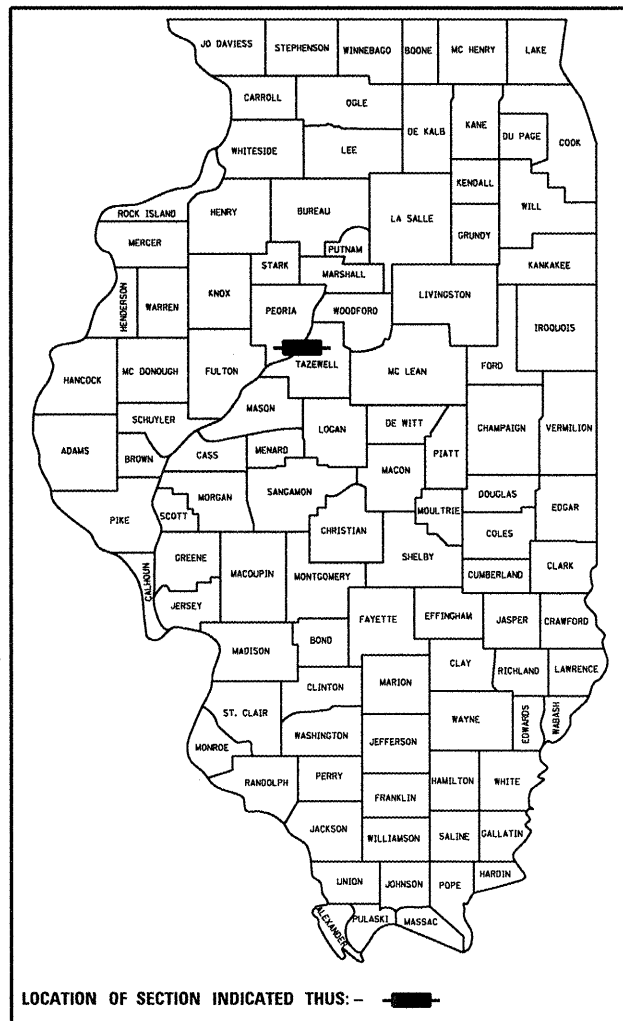
**STATE OF ILLINOIS**  
**DEPARTMENT OF TRANSPORTATION**  
**DIVISION OF HIGHWAYS**  
**FAP 669 (IL 116/L 29)**  
**SECTION 131-1**  
**TAZEWELL COUNTY**  
**C-94-069-11**

SHEET 1 OF 8

D-94-042-11

**INDEX OF SHEETS**

- 1 COVER SHEET
- 2 COMMITMENTS/JOB SPECIFIC/GENERAL NOTES
- 3 SUMMARY OF QUANTITIES
- 4 PLAN VIEW
- 5 TYPICAL SECTIONS
- 6 SCHEDULE OF QUANTITIES
- 7 TRAFFIC CONTROL STAGE 1 DETAIL
- 8 TRAFFIC CONTROL STAGE 2 DETAIL



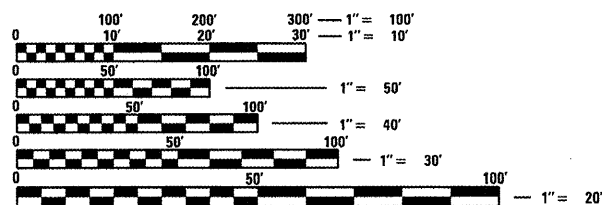
SEE PLAN VIEW FOR  
IMPROVEMENT BEGINNING  
AND ENDING STATIONS

**STANDARDS**

- 001001-02
- 420701-02
- 442101-07
- 701411-07
- 701422-03
- 701451-01
- 701456-01
- 701901-01

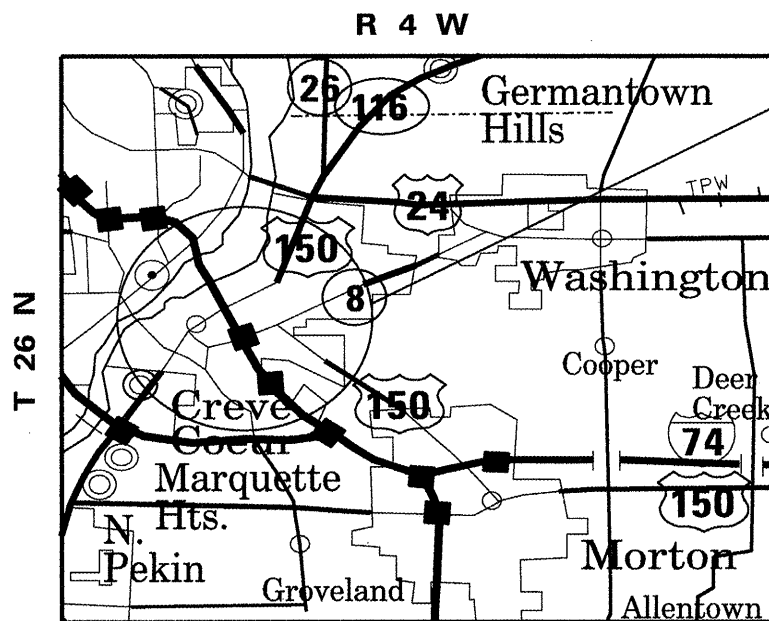
**IL 116/L 29**

- ADT = 13400 (2009)
- MU = 2% (2009)
- SU = 3% (2009)



FULL SIZE PLANS HAVE BEEN PREPARED USING STANDARD ENGINEERING SCALES. REDUCED SIZED PLANS WILL NOT CONFORM TO STANDARD SCALES. IN MAKING MEASUREMENTS ON REDUCED PLANS, THE ABOVE SCALES MAY BE USED.

J.U.L.I.E.  
JOINT UTILITY LOCATION INFORMATION FOR EXCAVATION  
1-800-892-0123  
OR 811



**DESCRIPTION OF PROJECT:**  
**THIS PROJECT CONSISTS OF PATCHING ON IL 116/L 29 (CEDAR ST. EXTENSION) AND IL 29 INTERCHANGE IN EAST PEORIA.**

PROJECT ENGINEER: CHRISTOPHER MAUSHARD 671-3453

DESIGNER: STACEY LONG 671-3477

CONTRACT NO. 68A48  
CATALOG NO. 034676-00D

GROSS LENGTH OF IMPROVEMENT = .3 MI  
NET LENGTH OF IMPROVEMENT = .3 MI

STATE OF ILLINOIS  
DEPARTMENT OF TRANSPORTATION  
DIVISION OF HIGHWAYS

SUBMITTED MM 10 20 11

*[Signature]*  
DEPUTY DIRECTOR OF HIGHWAYS, REGION ENGINEER

July 1 20 11  
*Scott E. Stitt, P.E.*  
ENGINEER OF DESIGN AND ENVIRONMENT

July 1 20 11  
*Christine M. Reeder*  
DIRECTOR OF HIGHWAYS, CHIEF ENGINEER

**PRINTED BY THE AUTHORITY  
OF THE STATE OF ILLINOIS**