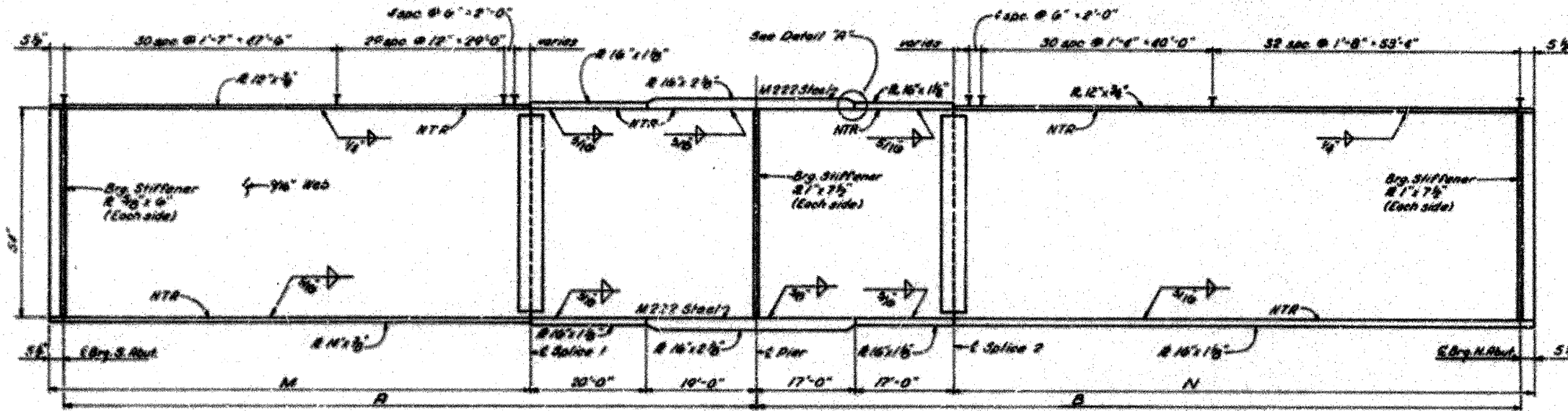
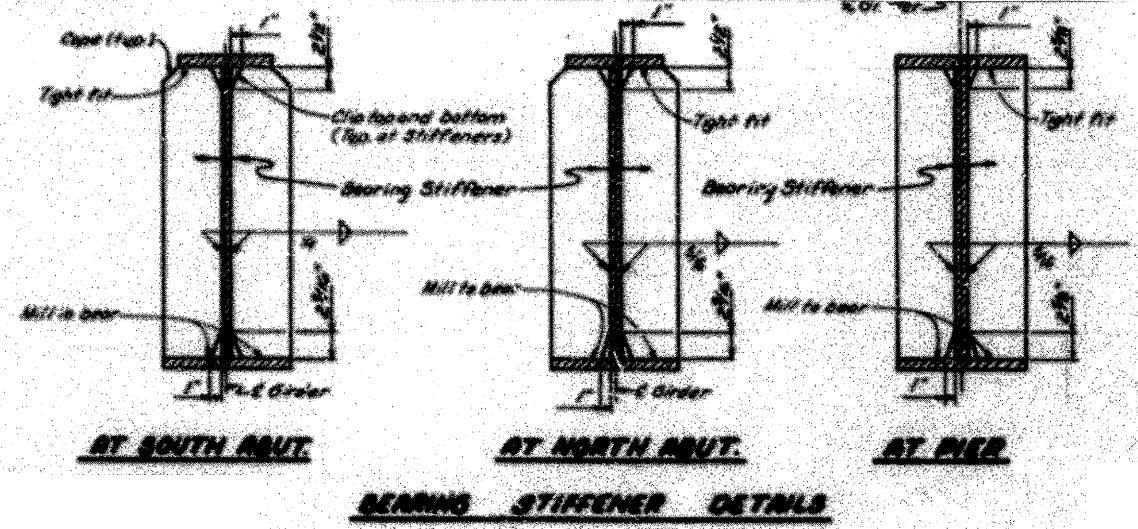
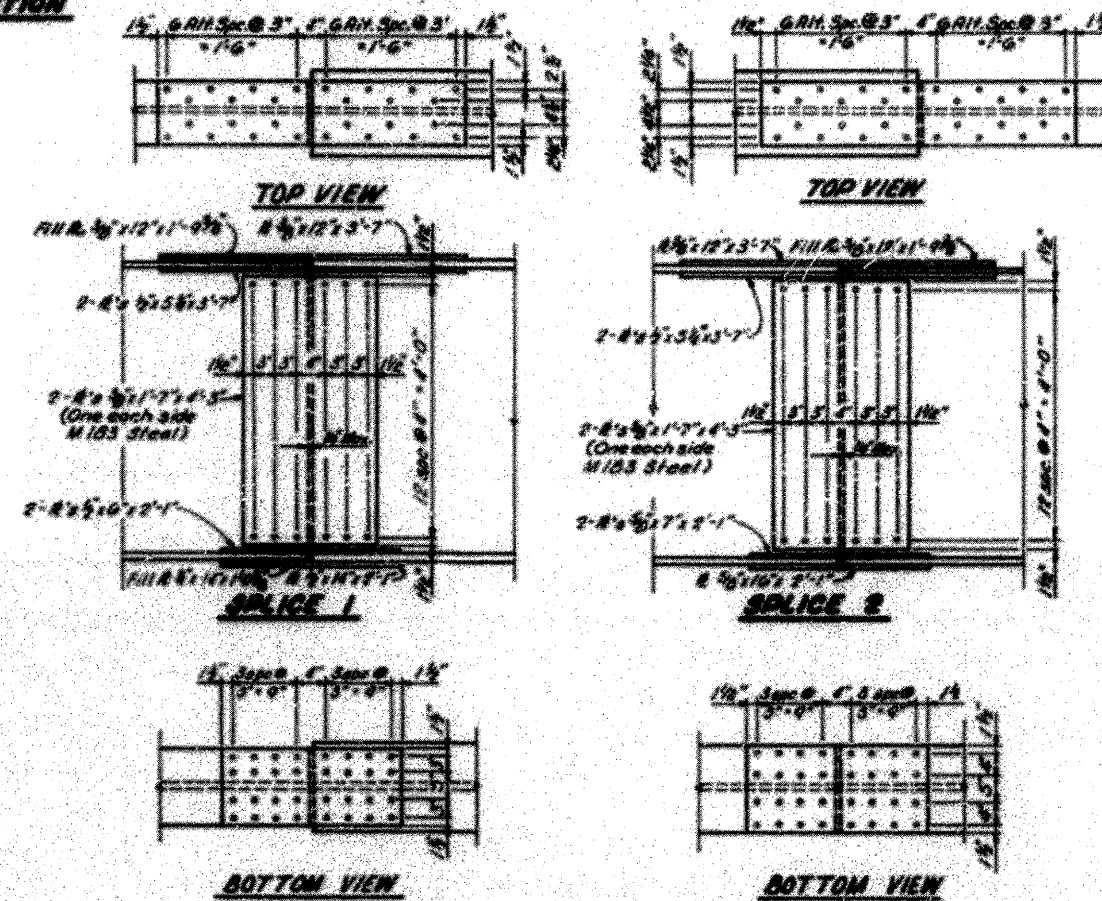


INFORMATION ONLY 54" GIRDERS



TYPICAL GIRDER ELEVATION

Girder	Radius	A	B	C	D	E	F	G	H	I	J	K	L	M	N
1	1732.97	119'-9 1/2"	131'-5 3/4"	117'-9"	17'-8 5/8"	88'-7 1/8"	14'-0 3/8"	16'-9 1/16"	100'-10 1/8"	15'-11 1/2"	0'-7 3/8"			81'-2 3/16"	97'-11 1/4"
2	1732.97	119'-10"	131'-7 3/8"	117'-10 1/8"	17'-8 3/8"	88'-7 1/8"	14'-0 3/8"	16'-9 1/16"	100'-10 1/8"	15'-11 1/2"	0'-7 3/8"	17'-6"	17'-1 3/8"	81'-3 1/2"	98'-0 7/8"
3	1732.97	119'-10 5/8"	131'-9 1/8"	117'-11 3/8"	17'-8 3/8"	88'-7 1/8"	14'-0 3/8"	16'-9 1/16"	100'-10 1/8"	15'-11 1/2"	0'-7 3/8"	17'-6 1/2"	17'-3 1/2"	81'-4 9/16"	98'-2 9/8"
4	1736.97	119'-11 1/8"	131'-10 5/8"	118'-0 3/8"	17'-8 3/8"	88'-8 3/8"	14'-0 1/8"	16'-9 1/16"	100'-10 1/8"	15'-11 1/2"	0'-10 1/8"	17'-7 1/2"	17'-4 3/8"	81'-5 3/16"	98'-4 1/16"
5	1730.05	119'-11 3/4"	131'-11 1/8"	118'-0 3/8"	17'-8 3/8"	88'-8 3/8"	14'-0 1/8"	16'-9 1/16"	100'-10 1/8"	15'-11 1/2"	0'-10 1/8"	17'-7 1/2"	17'-5 1/2"	81'-5 1/4"	98'-4 9/16"
6	1723.14	119'-11 3/8"	131'-11 1/4"	118'-1"	17'-8 3/8"	88'-8 3/8"	14'-0 1/8"	16'-9 1/16"	100'-10 1/8"	15'-11 1/2"	0'-10 1/2"	17'-7 3/4"	17'-5 1/4"	81'-5 1/4"	98'-4 9/16"
7	1716.22	119'-11 1/4"	131'-11 1/8"	118'-1"	17'-8 3/8"	88'-8 3/8"	14'-0 1/8"	16'-9 1/16"	100'-10 1/8"	15'-11 1/2"	0'-10 1/2"	17'-7 3/4"	17'-5 1/4"	81'-5 1/4"	98'-4 9/16"
8	1709.30	119'-11 1/8"	131'-11 3/8"	118'-1 1/4"	17'-8 3/8"	88'-8 3/8"	14'-0 1/8"	16'-9 1/16"	100'-10 1/8"	15'-11 1/2"	0'-10 3/8"	17'-7 1/2"	17'-5 1/4"	81'-5 3/8"	98'-5 1/16"
9	1702.39	119'-11 3/8"	131'-11 3/8"	118'-1 1/4"	17'-8 3/8"	88'-8 3/8"	14'-0 1/8"	16'-9 1/16"	100'-10 1/8"	15'-11 1/2"	0'-10 3/8"	17'-7 1/2"	17'-5 1/4"	81'-5 3/8"	98'-5 1/16"
10	1695.47	120'-0"	132'-0 1/8"	118'-1 1/2"	17'-8 3/8"	88'-8 3/8"	14'-0 1/8"	16'-9 1/16"	100'-10 1/8"	15'-11 1/2"	0'-10 3/8"	17'-7 1/2"	17'-5 1/4"	81'-5 1/4"	98'-5 1/16"
11	1691.47	120'-0"	132'-0 1/8"	118'-1 1/2"	17'-8 3/8"	88'-8 3/8"	14'-0 1/8"	16'-9 1/16"	100'-10 1/8"	15'-11 1/2"	0'-10 1/2"	17'-8"	17'-5 3/8"	81'-5 1/2"	98'-5 1/16"
12	1684.55	120'-0 1/8"	132'-0 1/4"	118'-1 1/2"	17'-8 3/8"	88'-8 3/8"	14'-0 1/8"	16'-9 1/16"	100'-10 1/8"	15'-11 1/2"	0'-10 1/2"	17'-8"	17'-5 3/8"	81'-5 1/2"	98'-5 1/16"
13	1677.64	120'-0 1/8"	132'-0 1/8"	118'-1 1/4"	17'-8 3/8"	88'-8 3/8"	14'-0 1/8"	16'-9 1/16"	100'-10 1/8"	15'-11 1/2"	0'-10 1/2"	17'-8 1/2"	17'-6 1/2"	81'-5 9/16"	98'-5 3/2"
14	1670.72	120'-0 3/8"	132'-0 3/8"	118'-1 3/4"	17'-8 3/8"	88'-8 3/8"	14'-0 1/8"	16'-9 1/16"	100'-10 1/8"	15'-11 1/2"	0'-10 1/2"	17'-8 1/2"	17'-6 1/2"	81'-5 9/16"	98'-5 3/2"
15	1663.80	120'-0 3/8"	132'-0 1/4"	118'-1 3/4"	17'-8 3/8"	88'-8 3/8"	14'-0 1/8"	16'-9 1/16"	100'-10 1/8"	15'-11 1/2"	0'-10 5/8"	17'-8 3/4"	17'-6 3/8"	81'-5 1/2"	98'-6 1/8"
16	1656.89	120'-0 1/4"	132'-1"	118'-1 3/4"	17'-8 3/8"	88'-8 3/8"	14'-0 1/8"	16'-9 1/16"	100'-10 1/8"	15'-11 1/2"	0'-10 5/8"	17'-8 1/2"	17'-6 1/4"	81'-5 1/2"	98'-6 3/16"
17	1649.97	120'-0 5/8"	132'-1 3/8"	118'-1 3/4"	17'-8 3/8"	88'-8 3/8"	14'-0 1/8"	16'-9 1/16"	100'-10 1/8"	15'-11 1/2"	0'-10 5/8"	17'-8 1/2"	17'-7"	81'-5 3/4"	98'-6 1/2"



BEARING STIFFENER DETAILS