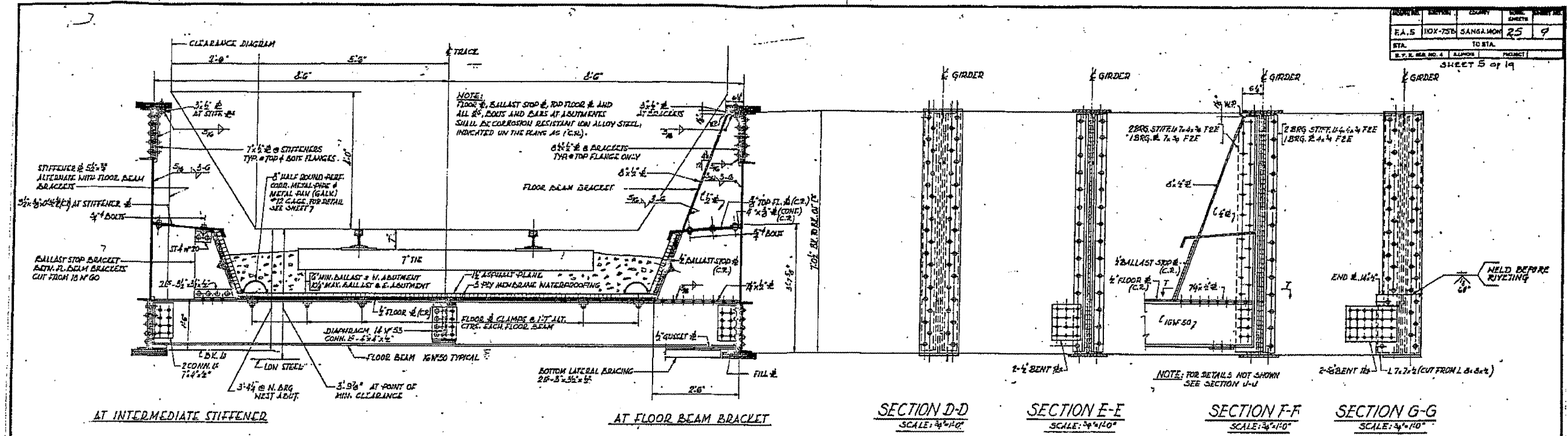


PROJECT NO.	SECTION	COUNTY	SHEET NO.	TOTAL SHEETS
F.A. 5	10X-75E	SANGAMON	25	9
STA.	TO STA.			
F.P. & R. NO. 4	PROJECT		SHEET 5 of 14	



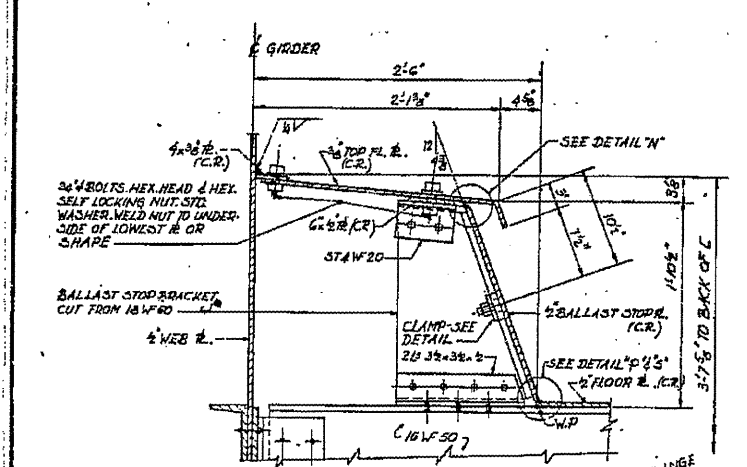
TYPICAL DECK CROSS SECTION
SCALE: 3/4"=1'-0"

SECTION D-D
SCALE: 3/4"=1'-0"

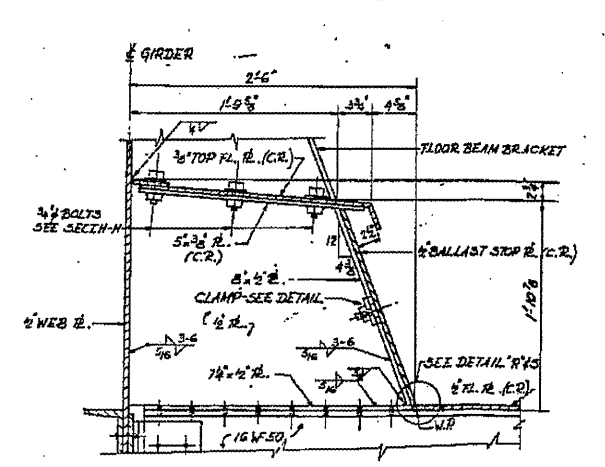
SECTION E-E
SCALE: 3/4"=1'-0"

SECTION F-F
SCALE: 3/4"=1'-0"

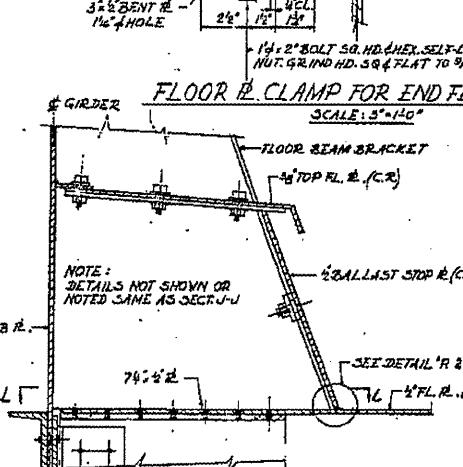
SECTION G-G
SCALE: 3/4"=1'-0"



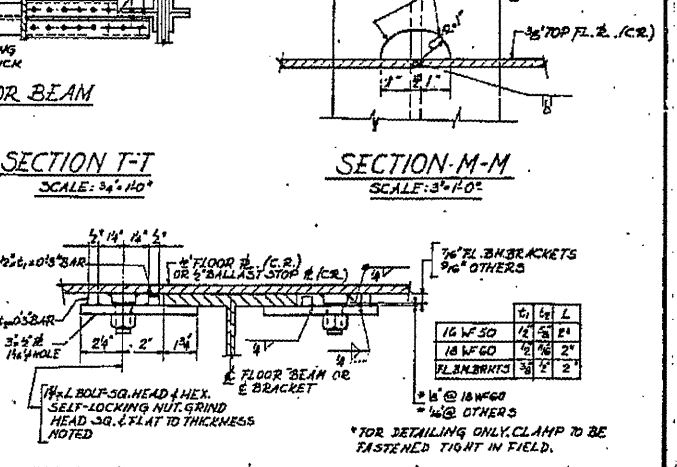
SECTION H-H
SCALE: 1/2"=1'-0"



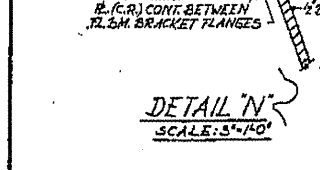
SECTION J-J
SCALE: 1/2"=1'-0"



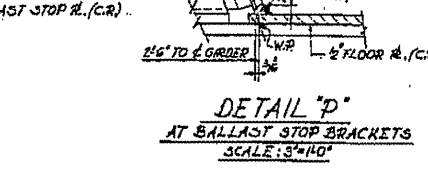
SECTION K-K
SCALE: 1/2"=1'-0"



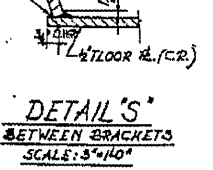
TYPICAL FLOOR BEAM & BALLAST STOP CLAMP
SCALE: 3/4"=1'-0"



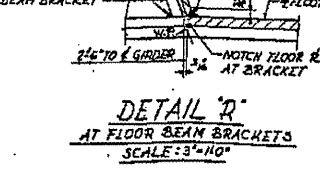
DETAIL N
SCALE: 3/4"=1'-0"



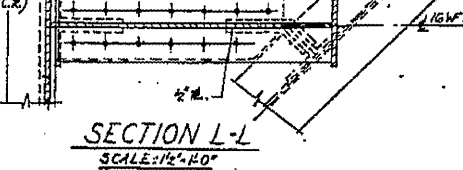
DETAIL P
SCALE: 3/4"=1'-0"



DETAIL S
SCALE: 3/4"=1'-0"



DETAIL R
SCALE: 3/4"=1'-0"



SECTION L-L
SCALE: 1/2"=1'-0"

TYPICAL DECK CROSS SECTION UNDERPASS
I.T.R.R. BRIDGE No. F-17.5
OVER SOUTH 5TH STREET EXTENDED SPRINGFIELD, ILLINOIS
PROJECT UG 166 (40)
SECTION 110X-75E
SANGAMON COUNTY
STATION 8+22.70

ALFRED BENSCH & ASSOCIATES
CONSULTING ENGINEERS
101 N. WABASH AVE. CHICAGO, ILLINOIS

FILE NAME =	USER NAME = #USER#	DESIGNED -	REVISED -	STATE OF ILLINOIS DEPARTMENT OF TRANSPORTATION	084-0033 (FOR INFORMATION ONLY)	F.A.P. RTE.	SECTION	COUNTY	TOTAL SHEETS	
#FILE#		DRAWN -	REVISED -			666	D-6 PAINTING 2009-	SANGAMON	13	10
		CHECKED -	REVISED -			2012		CONTRACT NO. 72C4B		
		DATE -	REVISED -			FED. ROAD DIST. NO. 6 ILLINOIS FED. AID PROJECT				