

STATE OF ILLINOIS  
DEPARTMENT OF TRANSPORTATION  
DIVISION OF HIGHWAYS

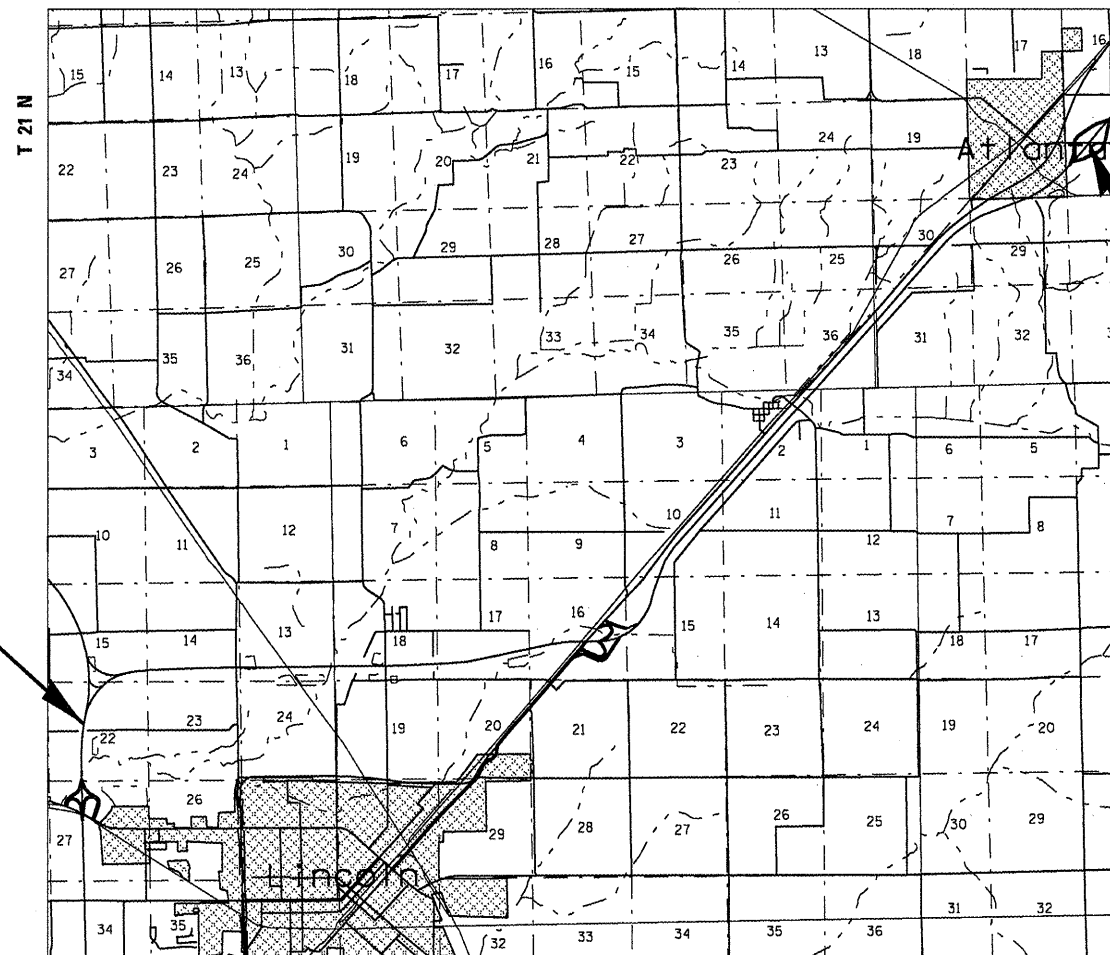
**PROPOSED  
CONTRACT MAINTENANCE**

FAI 55 (I 55)  
SECTION (54) INT PATCHING 2012

LOGAN COUNTY

C-96-088-11

R 2 W

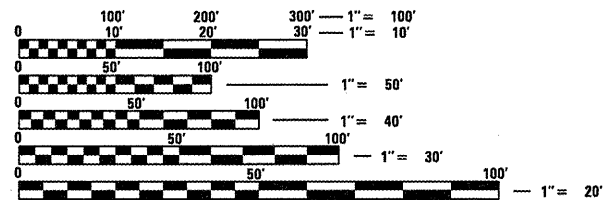


BEGIN PROJECT  
STA. 203 + 270.00

END PROJECT  
STA. 227 + 000.00

FOR INDEX OF SHEETS, SEE SHEET NO. 2

A.D.T. = 18,200 (5,400)



FULL SIZE PLANS HAVE BEEN PREPARED USING STANDARD  
ENGINEERING SCALES. REDUCED SIZED PLANS WILL NOT  
CONFORM TO STANDARD SCALES. IN MAKING MEASUREMENTS  
ON REDUCED PLANS, THE ABOVE SCALES MAY BE USED.

J.U.L.I.E.  
JOINT UTILITY LOCATION INFORMATION FOR EXCAVATION  
1-800-892-0123  
OR 811

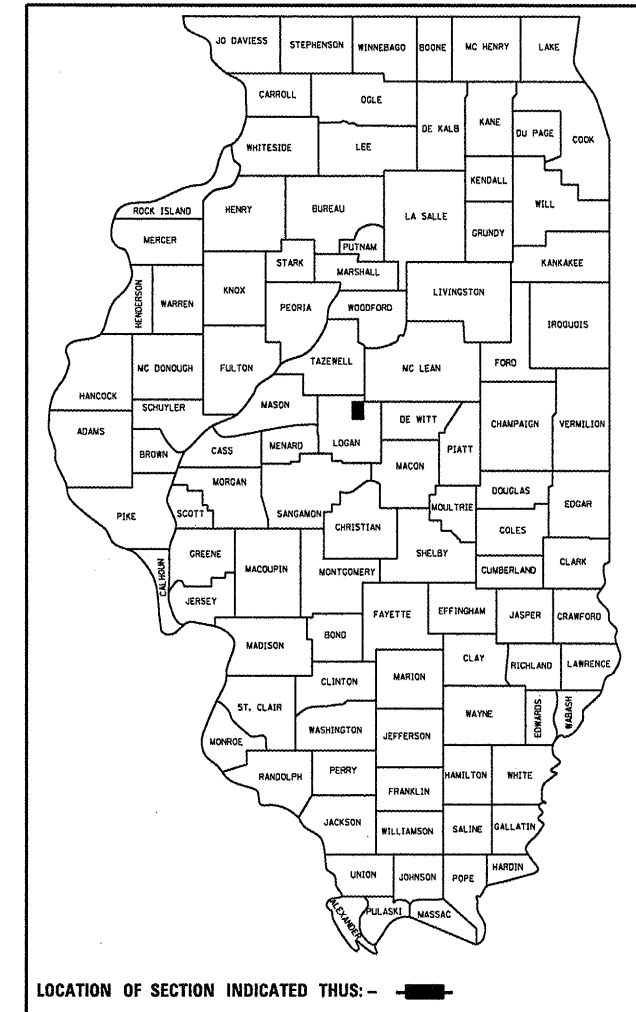
PLAN AND CONTRACT TECHNICIAN  
TIMOTHY SHARP (217)782-7743

CONTRACT NO. 72E56

GROSS LENGTH = 82,348.00 FT. = 15.600 MILES

F.A.I. RTE.	SECTION	COUNTY	TOTAL SHEETS	SHEET NO.
55	(54) INT PATCHING 2012	LOGAN	6	1
FED. ROAD DIST. NO.	ILLINOIS	CONTRACT NO. 72E56		

D-96-088-11



LOCATION OF SECTION INDICATED THUS: - [black rectangle] -

STATE OF ILLINOIS  
DEPARTMENT OF TRANSPORTATION  
DIVISION OF HIGHWAYS

SUBMITTED May 31 20 11  
Reynold Daskin  
DEPUTY DIRECTOR OF HIGHWAYS, REGION ENGINEER

July 1 20 11  
Scott E. Stitt P.E.  
Acting ENGINEER OF DESIGN AND ENVIRONMENT

July 1 20 11  
Christine M. Reader  
DIRECTOR OF HIGHWAYS, CHIEF ENGINEER

PRINTED BY THE AUTHORITY  
OF THE STATE OF ILLINOIS

INDEX

- 1 COVER
- 2 INDEX/STANDARDS/SIGNATURES
- 3 QUANTITIES
- 4 TYPICAL SECTIONS
- 5-6 SCHEDULES

STANDARDS

- 442001-04
- 701101-02
- 701106-02
- 701400-05
- 701401-06
- 701411-07
- 701901-01

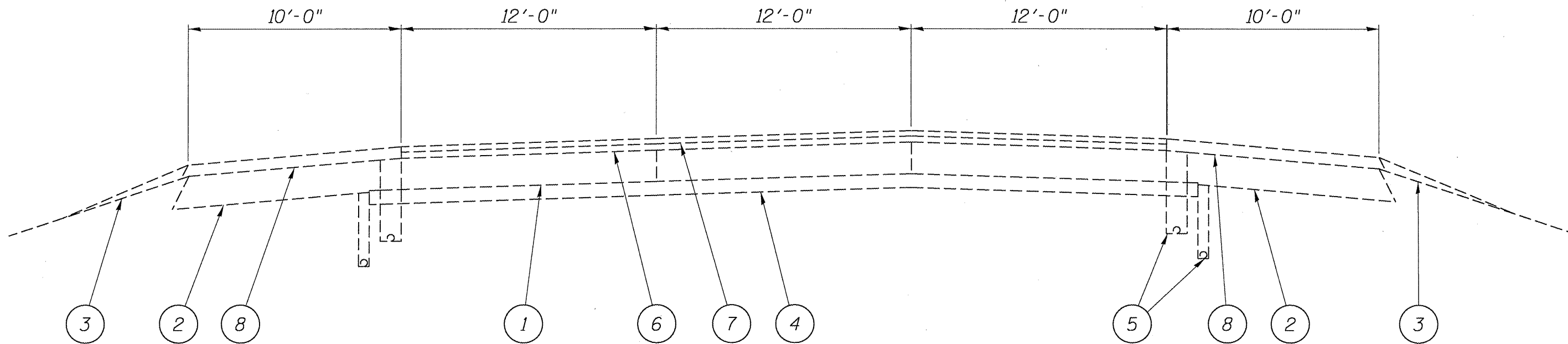
<b>STATE OF ILLINOIS DEPARTMENT OF TRANSPORTATION DIVISION OF HIGHWAYS DISTRICT 6</b>	
EXAMINED <u>MAY 26</u> 20 <u>11</u>	<u><i>Dick Walker</i></u> ENGINEER OF OPERATIONS
EXAMINED <u>MAY 26</u> 20 <u>11</u>	<u><i>Tommy F. ...</i></u> ENGINEER OF PROJECT IMPLEMENTATION
EXAMINED <u>May 20</u> 20 <u>11</u>	<u><i>ARML</i></u> ENGINEER OF PROGRAM DEVELOPMENT

INDEX/STANDARDS/SIGNATURES  
FAI 55 (I 55)  
SECTION (54) INT PATCHING 2012  
LOGAN COUNTY

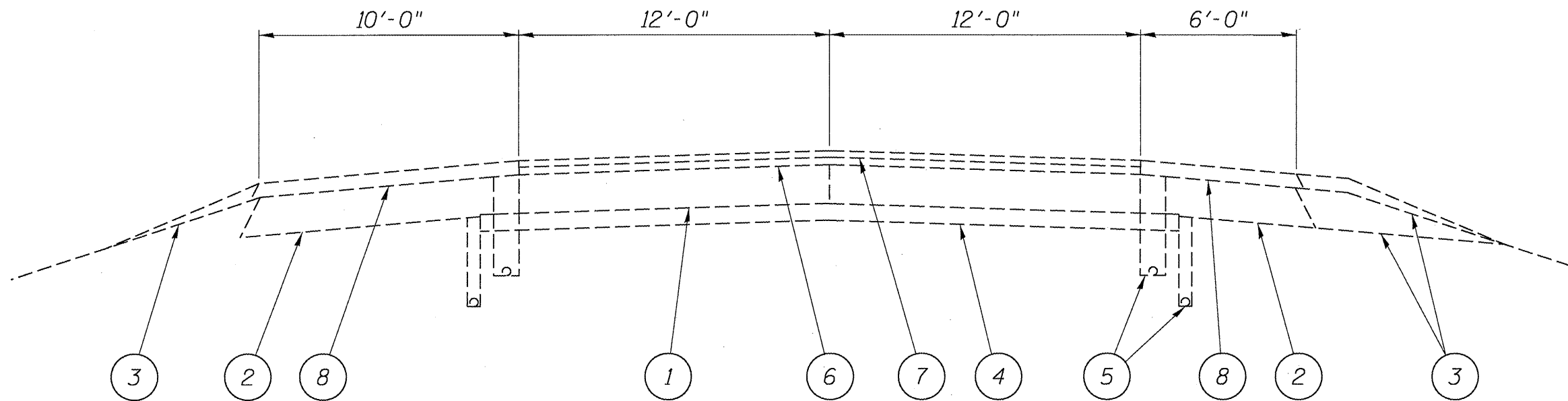
S U M M A R Y O F Q U A N T I T I E S

CODE NO.	ITEM	UNIT	100% STATE
			0005
			TOTAL QTY
44200610	CLASS A PATCHES, TYPE II, 13 INCH	SQ YD	495
44200612	CLASS A PATCHES, TYPE III, 13 INCH	SQ YD	107
44200614	CLASS A PATCHES, TYPE IV, 13 INCH	SQ YD	40
44213000	PATCH REINFORCEMENT	SQ YD	602
44213204	TIE BARS 3/4"	EACH	16
44213200	SAW CUTS	FOOT	3,478
67100100	MOBILIZATION	L SUM	1
70100205	TRAFFIC CONTROL AND PROTECTION, STANDARD 701401	EACH	10
70100420	TRAFFIC CONTROL AND PROTECTION, STANDARD 701411	EACH	10

QUANTITIES  
FAI 55 (I 55)  
SECTION (54) INT PATCHING 2012  
LOGAN COUNTY



S.B. & N.B. FAI-55  
STA. 171+835 TO 203+698.437



S.B. & N.B. FAI-55  
STA. 203+698.437 TO 227+000  
STA. 74+00 TO 127+50

LEGEND

- 1 EXIST. CRC PAVEMENT 9"
- 2 EXIST. BITUMINOUS SHOULDER 9"
- 3 EXIST. AGGREGATE SHOULDER
- 4 EXIST. STABILIZED BASE 4"
- 5 EXIST. PIPE UNDERDRAINS
- 6 EXIST. BITUMINOUS CONCRETE BINDER COURSE 1 3/4"
- 7 EXIST. BITUMINOUS CONCRETE SURFACE COURSE 1 1/2"
- 8 EXIST. BITUMINOUS SHOULDERS 3 1/4"

TYPICALS  
FAI 55 (I-55)  
SECTION (54) INT PATCHING 2012  
LOGAN COUNTY

LOCATION					PATCHING SCHEDULE CLASS A PATCHES (SQ YD)						SAW CUTS		TIE BARS		PATCHING REINFORCEMENT	
	LENGTH (FOOT)		WIDTH	SQ YD FULL DEPTH	TY II	TY III	TY IV	TY II	TY III	TY IV	(FOOT)		(EACH)		(SQ YD)	
	PASSING	DRIVING									PASSING	DRIVING	PASSING	DRIVING	PASSING	DRIVING
STA 171+835		6.0	12.0	8.0				8.0				60.0				8.0
STA 174+076		6.0	12.0	8.0				8.0				60.0				8.0
STA 178+558		6.0	12.0	8.0				8.0				60.0				8.0
STA 180+799		6.0	12.0	8.0				8.0				60.0				8.0
STA 185+281		6.0	12.0	8.0				8.0				60.0				8.0
STA 187+522		6.0	12.0	8.0				8.0				60.0				8.0
STA 192+004		6.0	12.0	8.0				8.0				60.0				8.0
STA 194+245		6.0	12.0	8.0				8.0				60.0				8.0
STA 196+486		6.0	12.0	8.0				8.0				60.0				8.0
STA 200+968		6.0	12.0	8.0				8.0				60.0				8.0
STA 203+209	6.0		12.0	8.0	8.0						60.0				8.0	
STA 205+450		6.0	12.0	8.0				8.0				60.0				8.0
STA 209+500		6.0	12.0	8.0				8.0				60.0				8.0
STA 212+209		6.0	12.0	8.0				8.0				60.0				8.0
STA 212+609		8.0	12.0	10.7				10.7				64.0				10.7
STA 212+724		6.0	12.0	8.0				8.0				60.0				8.0
STA 213+476		6.0	12.0	8.0				8.0				60.0				8.0
STA 214+277		6.0	12.0	8.0				8.0				60.0				8.0
STA 215+209		8.0	12.0	10.7				10.7				64.0				10.7
STA 215+391		6.0	12.0	8.0				8.0				60.0				8.0
STA 215+509		6.0	12.0	8.0				8.0				60.0				8.0
STA 215+970		8.0	12.0	10.7				10.7				64.0				10.7
STA 216+600		6.0	12.0	8.0				8.0				60.0				8.0
STA 217+357		8.0	12.0	10.7				10.7				64.0				10.7
STA 217+496		6.0	12.0	8.0				8.0				60.0				8.0
STA 217+509		8.0	12.0	10.7				10.7				64.0				10.7
STA 217+587		6.0	12.0	8.0				8.0				60.0				8.0
STA 217+648		6.0	12.0	8.0				8.0				60.0				8.0
STA 217+885	30.0		12.0	40.0			40.0				108.0		16			
S.B. TOTALS				277.3	8.0	0.0	40.0	229.5	0.0	0.0	168.0	1640.0	16	0	8.0	229.5

NOTES:

1. STATIONS ARE APPROXIMATE.

SCHEDULES  
FAI 55 (I-55)  
SECTION (54) INT PATCHING 2012  
LOGAN COUNTY

LOCATION	PATCHING SCHEDULE CLASS A PATCHES				SAW CUTS		TIE BARS		PATCHING REINFORCEMENT							
	LENGTH (FOOT)		WIDTH	SQ YD FULL DEPTH	(SQ YD)			(FOOT)		(EACH)		(SQ YD)				
	PASSING	DRIVING			TY II	TY III	TY IV	TY II	TY III	TY IV	PASSING	DRIVING	PASSING	DRIVING		
NORTHBOUND I-55																
STA 74+00		6.0	12.0	8.0			8.0			60.0			8.0			
STA 127+50		13.0	12.0	17.3				17.3		74.0			17.3			
STA 127+50		13.0	12.0	17.3				17.3		74.0			17.3			
STA 227+000	7.0		12.0	9.3	9.3				62.0				9.3			
STA 227+000	7.0		12.0	9.3	9.3				62.0				9.3			
STA 220+800		6.0	12.0	8.0			8.0			60.0			8.0			
STA 220+750		6.0	12.0	8.0			8.0			60.0			8.0			
STA 220+693		6.0	12.0	8.0			8.0			60.0			8.0			
STA 219+550		6.0	12.0	8.0			8.0			60.0			8.0			
STA 219+409		6.0	12.0	8.0			8.0			60.0			8.0			
STA 216+930		6.0	12.0	8.0			8.0			60.0			8.0			
STA 216+900		14.0	12.0	18.7				18.7		76.0			18.7			
STA 214+030		8.0	12.0	10.7			10.7			64.0			10.7			
STA 213+993		8.0	12.0	10.7			10.7			64.0			10.7			
STA 213+161		8.0	12.0	10.7			10.7			64.0			10.7			
STA 213+161	12.0		12.0	16.0		16.0			72.0				16.0			
STA 212+660	6.0		12.0	8.0	8.0				60.0				8.0			
STA 212+630	6.0		12.0	8.0	8.0				60.0				8.0			
STA 212+600		6.0	12.0	8.0			8.0			60.0			8.0			
STA 212+252		6.0	12.0	8.0			8.0			60.0			8.0			
STA 212+005		14.0	12.0	18.7				18.7		76.0			18.7			
STA 211+948		14.0	12.0	18.7				18.7		76.0			18.7			
STA 210+507		6.0	12.0	8.0			8.0			60.0			8.0			
STA 210+045		6.0	12.0	8.0			8.0			60.0			8.0			
STA 209+252		6.0	12.0	8.0			8.0			60.0			8.0			
STA 209+252	6.0		12.0	8.0	8.0				60.0				8.0			
STA 208+491		7.0	12.0	9.3			9.3			62.0			9.3			
STA 208+491	6.0		12.0	8.0	8.0				60.0				8.0			
STA 207+500		8.0	12.0	10.7			10.7			64.0			10.7			
STA 207+500		8.0	12.0	10.7			10.7			64.0			10.7			
STA 205+970		6.0	12.0	8.0			8.0			60.0			8.0			
STA 205+352		6.0	12.0	8.0			8.0			60.0			8.0			
STA 204+734		6.0	12.0	8.0			8.0			60.0			8.0			
STA 202+262		6.0	12.0	8.0			8.0			60.0			8.0			
STA 201+644		6.0	12.0	8.0			8.0			60.0			8.0			
STA 201+026		6.0	12.0	8.0			8.0			60.0			8.0			
N.B. TOTALS				364.0	50.6	16.0	0.0	206.8	90.7	0.0	436.0	1838.0	0	0	66.6	297.5
N.B. & S.B. TOTALS				641.3	58.6	16.0	40.0	436.3	90.7	0.0	604.0	3478.0	16.0	0.0	74.6	527.0

NOTES:

1. STATIONS ARE APPROXIMATE.

SCHEDULES  
FAI 55 (I-55)  
SECTION (54) INT PATCHING 2012  
LOGAN COUNTY