

F.A.P. RTE.	SECTION	COUNTY	TOTAL SHEETS	SHEET NO.
322	(51,52)L-2	MACON	11	1
FED. ROAD DIST. NO. 7	ILLINOIS	CONTRACT NO. 74344		

STATE OF ILLINOIS
DEPARTMENT OF TRANSPORTATION
DIVISION OF HIGHWAYS

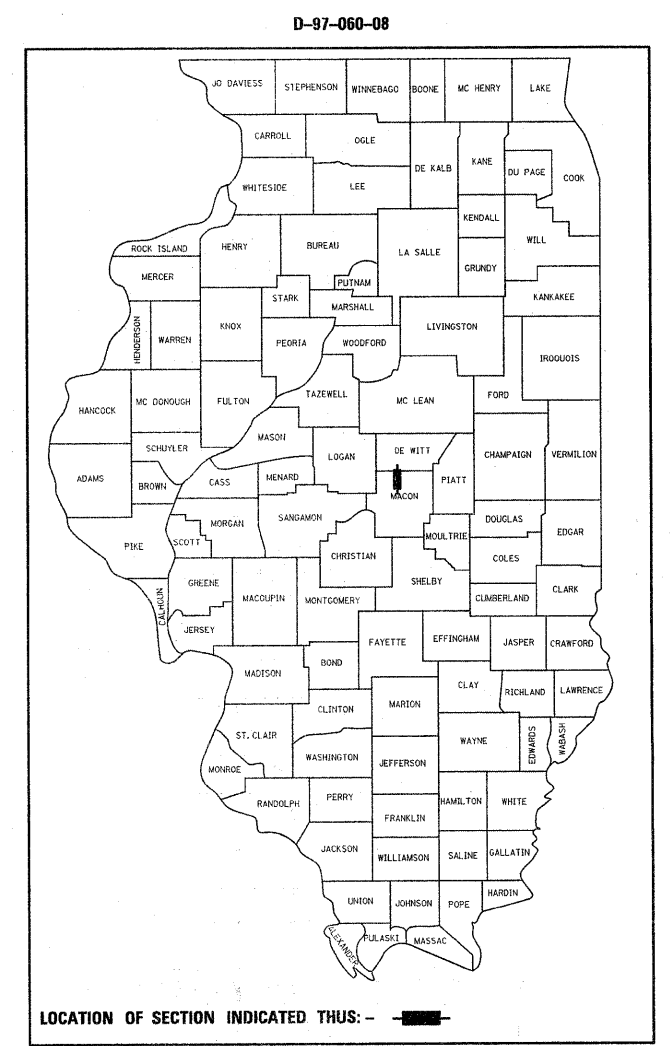
PROPOSED
HIGHWAY PLANS

FAP ROUTE 322 (U.S. 51)
SECTION (51,52)L-2

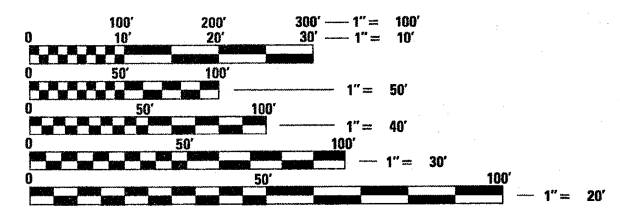
HIGHWAY LIGHTING
MACON COUNTY

C-97-113-08

FOR INDEX OF SHEETS, SEE SHEET NO. 2

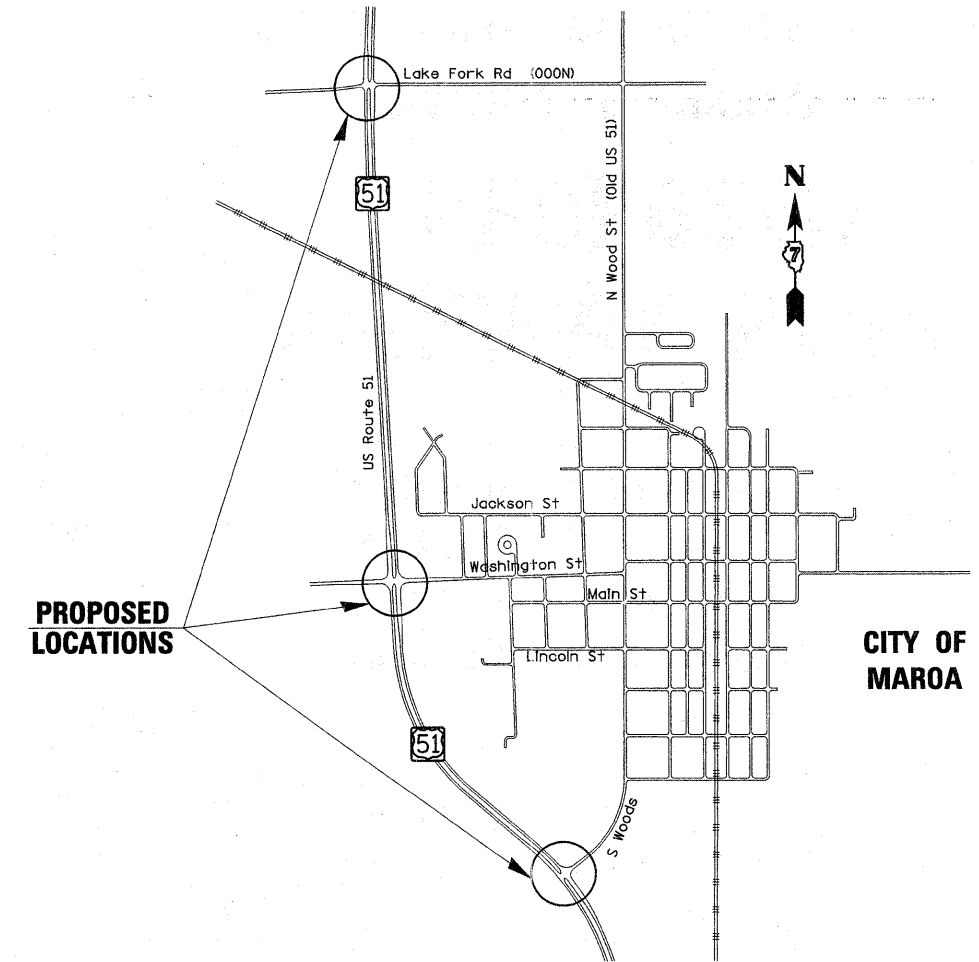


ADT US RTE 51-12400 (2009)



FULL SIZE PLANS HAVE BEEN PREPARED USING STANDARD ENGINEERING SCALES. REDUCED SIZED PLANS WILL NOT CONFORM TO STANDARD SCALES. IN MAKING MEASUREMENTS ON REDUCED PLANS, THE ABOVE SCALES MAY BE USED.

J.U.L.I.E.
 JOINT UTILITY LOCATION INFORMATION FOR EXCAVATION
 1-800-892-0123
 OR 811



GROSS LENGTH = x.xx FT. = x.xxx MILE
 NET LENGTH = x.xx FT. = x.xxx MILE

PROJECT ENGINEER-ROB MACKLIN
 PROJECT MANAGER-LYNN McCLELLAN

CONTRACT NO. 74344

STATE OF ILLINOIS
 DEPARTMENT OF TRANSPORTATION
 DIVISION OF HIGHWAYS

SUBMITTED 05-26 20 11

Roger L. Drishell, Inc.
 DEPUTY DIRECTOR OF HIGHWAYS, REGION ENGINEER

July 1 20 11
Scott E. Stitt, P.E., Inc.
 ACTING ENGINEER OF DESIGN AND ENVIRONMENT

July 1 20 11
Christine M. Reed, Inc.
 DIRECTOR OF HIGHWAYS, CHIEF ENGINEER

PRINTED BY THE AUTHORITY
OF THE STATE OF ILLINOIS

THIS SECTION SHALL BE CONSTRUCTED IN ACCORDANCE WITH THE PLANS, THE "STANDARD SPECIFICATIONS FOR ROAD AND BRIDGE CONSTRUCTION", ADOPTED JANUARY 1, 2007; THE "SUPPLEMENTAL SPECIFICATIONS AND RECURRING SPECIAL PROVISIONS" ADOPTED JANUARY 1, 2011; AND "THE SPECIAL PROVISIONS" INCLUDED IN THE PROPOSAL.

THIS PROJECT IS LOCATED AT THREE INTERSECTION ON FAP 322 (US 51) AROUND THE CITY OF MAROA, IN MACON COUNTY. THE WORK INCLUDED IN THIS SECTION CONSISTS OF THE INSTALLATION OF HIGHWAY LIGHTING AT THE THREE SEPARATE LOCATIONS AND ALL OTHER WORK NECESSARY TO COMPLETE THIS SECTION.

THE LOCATION OF BURIED AND ABOVE GROUND UTILITIES SHOWN ARE APPROXIMATE, AND ARE SHOWN FOR THE CONTRACTOR INFORMATIONAL USE ONLY, AND ARE NOT TO BE REFERENCED FOR CONSTRUCTION PURPOSES. THE IMPLIED PRESENCE OR ABSENCE OF UTILITIES IS NOT TO BE CONSTRUED BY THE OWNER, ENGINEER, CONTRACTOR OR SUBCONTRACTORS TO BE AN ACCURATE AND COMPLETE REPRESENTATION OF UTILITIES THAT MAY OR MAY NOT EXIST ON THE CONSTRUCTION SITE. BURIED AND ABOVE GROUND UTILITY LOCATIONS, IDENTIFICATION, AND MARKINGS ARE THE SOLE RESPONSIBILITY OF THE CONTRACTOR. REROUTING, DISCONNECTION, PROTECTION, ETC., OF ANY UTILITIES MUST BE COORDINATED BETWEEN THE CONTRACTOR, UTILITY COMPANY, AND OWNER. SITE SAFETY, INCLUDING THE AVOIDANCE OF HAZARDS ASSOCIATED WITH BURIED AND ABOVE GROUND UTILITIES, REMAINS THE SOLE RESPONSIBILITY OF THE CONTRACTOR. THE CONTRACTOR SHALL VERIFY THE EXACT LOCATION OF ALL UNDERGROUND UTILITIES PRIOR TO BEGINNING CONSTRUCTION. CALL J.U.L.I.E. AT 1-800-892-0123.

THE CONTRACTOR IS RESPONSIBLE FOR UNCOVERING OR HAND DIGGING AROUND UTILITIES AS NECESSARY. THE COST OF THIS WORK IS TO BE INCLUDED WITH THE TRENCH AND BACKFILL FOR ELECTRICAL WORK PAY ITEM.

KNOWN UTILITIES LOCATED WITHIN THE LIMITS OF THIS IMPROVEMENT ARE:

AMEREN-IP
ROBERT J. ZUEGE
SUPERVISING ENGINEER
2400 NORTH JASPER STREET
DECATUR, IL 62526
PH: 217-424-7075

ALMEGA COMMUNICATIONS
PHIL CLARO
1204 S. SECOND ST.
GILLESPIE, IL 62033
CELL: 765-714-5328
Phillip@almeqaonline.com

VERIZON
CHARLES JENKINS
330 W. BEECHER
JACKSONVILLE, IL 62650
PH. 217-243-0211
charles.jenkins@verizon.com

CITY OF MAROA
BILL ZOMBRO
P. O. BOX 136
MAROA, IL 61756
PH: 217-794-2206

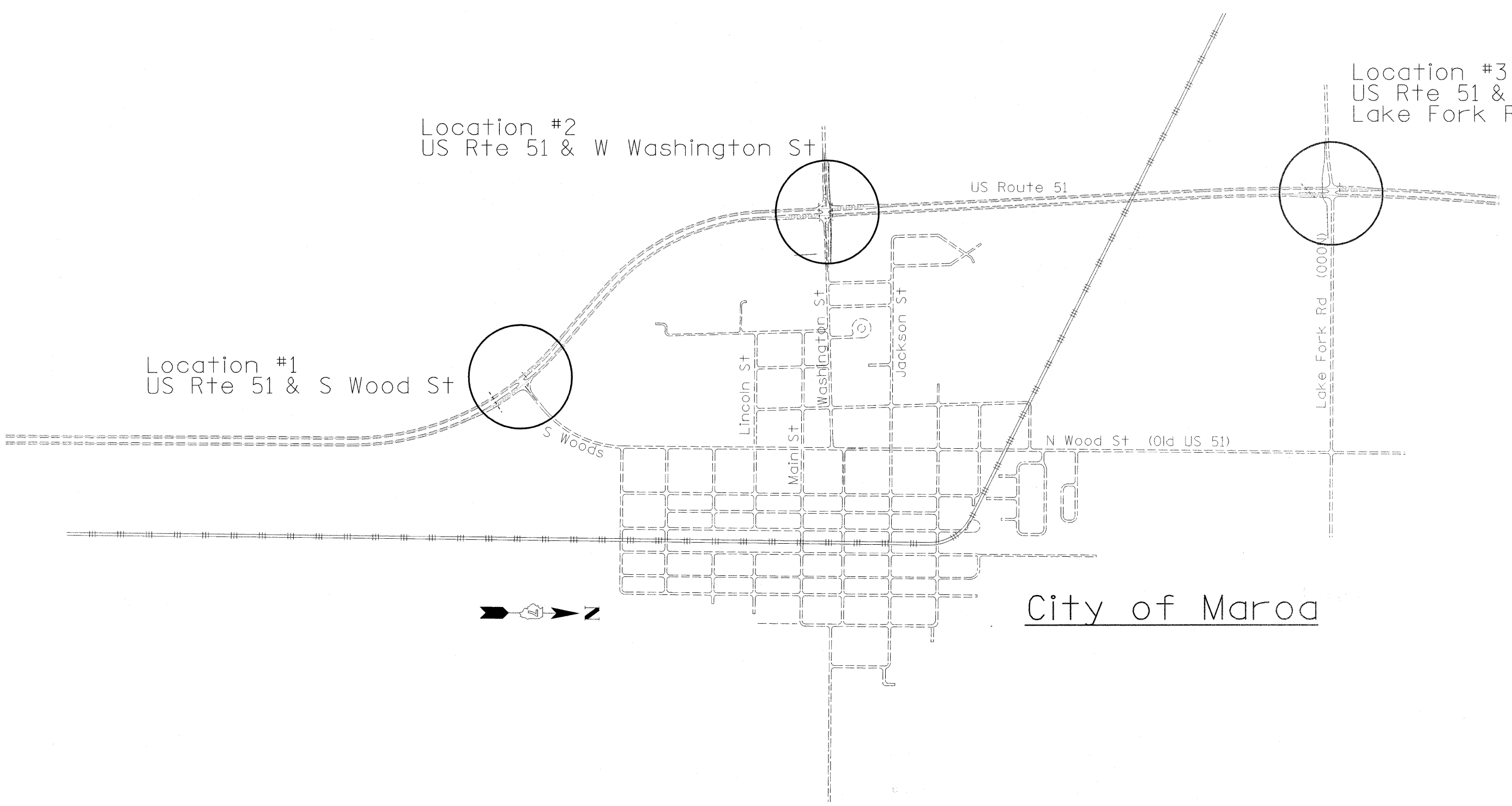
- 1 COVER SHEET
- 2 INDEX OF SHEETS AND GENERAL NOTES
- 3 SUMMARY OF QUANTITIES
- 4 LOCATION MAP
- 5 LIGHTING SCHEDULE
- 6 HIGHWAY LIGHTING LOCATION #1 (WOODS ST INTERSECTION)
- 7 HIGHWAY LIGHTING LOCATION #2 (W. WASHINGTON ST INTERSECTION)
- 8 HIGHWAY LIGHTING LOCATION #3 (LAKE FORK RD INTERSECTION)
- 9 POLE HANDHOLE WIRING DETAIL
- 10 POLE STANDARDS
- 11 DETAIL FOR NIGHTTIME LIGHTING INSPECTION

THE FOLLOWING STANDARDS ARE A PART OF THESE PLANS AND ARE INCLUDED AFTER SHEET NO. 11:

- 000001-06 STANDARD SYMBOLS, ABBREVIATIONS AND PATTERNS
- 701101-02 OFF-ROAD OPERATIONS, MULTILANE, 15' TO 24" FROM PAVEMENT EDGE
- 701106-02 OFF-ROAD OPERATIONS, MULTILANE, MORE THAN 15' AWAY
- 701400-05 APPROACH TO LANE CLOSURE, FREEWAY/EXPRESSWAY
- 701406-06 LANE CLOSURE, FREEWAY/EXPRESSWAY, DAY OPERATIONS ONLY
- 701421-03 LANE CLOSURE, MULTILANE, DAY OPERATIONS ONLY, FOR SPEEDS >=45 MPH TO 55 MPH
- 701901-01 TRAFFIC CONTROL DEVICES
- 825001-01 LIGHTING CONTROLLER, POLE MOUNTED, 240V
- 836001 LIGHT POLE FOUNDATION

FILE NAME =	USER NAME = mcelleanla	DESIGNED -	REVISED -	STATE OF ILLINOIS DEPARTMENT OF TRANSPORTATION	INDEX OF SHEETS & GENERAL NOTES	F.A.P. RTE.	SECTION	COUNTY	TOTAL SHEETS	SHEET NO.
cr\pwork\pwork\mcelleanla\dms35865\774344-sh-t-light.dgn	DRAWN -	REVISED -	322			(51,52)L-2	MACON	11	2	
PLOT SCALE = 50,0000' / 1" =	CHECKED -	REVISED -	CONTRACT NO. 74344							
PLOT DATE = 5/26/2011	DATE -	REVISED -	SCALE: SHEET NO. OF SHEETS STA. TO STA.							
						FED. ROAD DIST. NO. 7 ILLINOIS FED. AID PROJECT				

SUMMARY OF QUANTITIES			100% STATE CONSTRUCTION TYPE CODE		
CODE NO	ITEM	UNIT	TOTAL QUANTITIES	0021	
				LIGHTING	
67100100	MOBILIZATION	L SUM	1	1	
70100310	TRAFFIC CONTROL AND PROTECTION, STANDARD 701421	L SUM	1	1	
70100700	TRAFFIC CONTROL AND PROTECTION, STANDARD 701406	L SUM	1	1	
80400100	ELECTRIC SERVICE INSTALLATION	EACH	3	3	
81021330	CONDUIT PUSHED, 2" DIA., PVC	FOOT	649	649	
81603010	UNIT DUCT, 600V, 2-1C NO.10, 1/C NO.10 GROUND, (XLP-TYPE USE), 3/4" DIA. POLYETHYLENE	FOOT	5012	5012	
81900200	TRENCH AND BACKFILL FOR ELECTRICAL WORK	FOOT	4003	4003	
82102250	LUMINAIRE, SODIUM VAPOR, HORIZONTAL MOUNT, 250 WATT	EACH	28	28	
82500310	LIGHTING CONTROLLER, POLE MOUNTED, 240VOLT, 60AMP	EACH	3	3	
83003600	LIGHT POLE, ALUMINUM, 45 FT. M. H., 15 FT. DAVIT ARM	EACH	28	28	
83600355	LIGHT POLE FOUNDATION METAL, 15" BOLT CIRCLE, 8" X 6'	EACH	28	28	
83800650	BREAKAWAY DEVICE, COUPLING, WITH STAINLESS STEEL SCREEN	EACH	112	112	
84200500	REMOVAL OF LIGHTING UNIT, SALVAGE	EACH	3	3	
84200804	REMOVAL OF POLE FOUNDATION	EACH	3	3	
84500110	REMOVAL OF LIGHTING CONTROLLER	EACH	3	3	
84500120	REMOVAL OF ELECTRIC SERVICE INSTALLATION	EACH	3	3	



City of Maroa

FILE NAME =	USER NAME = mcllellanla	DESIGNED -	REVISED -	STATE OF ILLINOIS DEPARTMENT OF TRANSPORTATION	LOCATION MAP			F.A.P. RTE.	SECTION	COUNTY	TOTAL SHEETS	SHEET NO.
es:\pwork\pwork\mcllellanla\dms35866\774344-sht-light.dgn	774344-sht-light.dgn	DRAWN -	REVISED -		322	(51,52)L-2	MACON	11	4			
PLOT SCALE = 50.00000 ' / in.	CHECKED -	REVISED -	REVISED -		SCALE: SHEET NO. OF SHEETS STA. TO STA.			CONTRACT NO. 74344				
PLOT DATE = 5/26/2011	DATE -	REVISED -	REVISED -		FED. ROAD DIST. NO. 7 ILLINOIS FED. AID PROJECT							

LIGHTING SCHEDULE

PAYITEM	LOCATION #1	LOCATION #2	LOCATION #3	TOTAL
	S WOODS ST INTERSECTION	WASHINGTON ST INTERSECTION	LAKE FORK RD INTERSECTION	
ELECTRIC SERVICE INSTALLATION	1	1	1	3
CONDUIT PUSHED, 2" DIA., PVC	170	259	220	649
UNIT DUCT, 600V, 2-1C #10, 1/C #10 GROUND, (XLP-TYPE USE) 3/4" POLYETHYLENE	1815	1782	1415	5012
TRENCH AND BACKFILL FOR ELECTRICAL WORK	1517	1395	1091	4003
LUMINAIRE, SODIUM VAPOR, HORIZONTAL MOUNT, 250 WATT	10	10	8	28
LIGHTING CONTROLLER, POLE MOUNTED, 240 VOLT, 60 AMP	1	1	1	3
LIGHT POLE, ALUMINUM, 45 FT. M.H., 15 FT. DAVIT ARM	10	10	8	28
LIGHT POLE, FOUNDATION METAL, 15" BOLT CIRCLE, 8" X 6'	10	10	8	28
BREAKAWAY DEVICE, COUPLING, WITH STAINLESS STEEL SCREEN	40	40	32	112
REMOVAL OF LIGHTING UNIT, SALVAGE	1	1	1	3
LIGHTING FOUNDATION REMOVAL	1	1	1	3
REMOVAL OF LIGHTING CONTROLLER	1	1	1	3
REMOVAL OF ELECTRIC SERVICE INSTALLATION	1	1	1	3

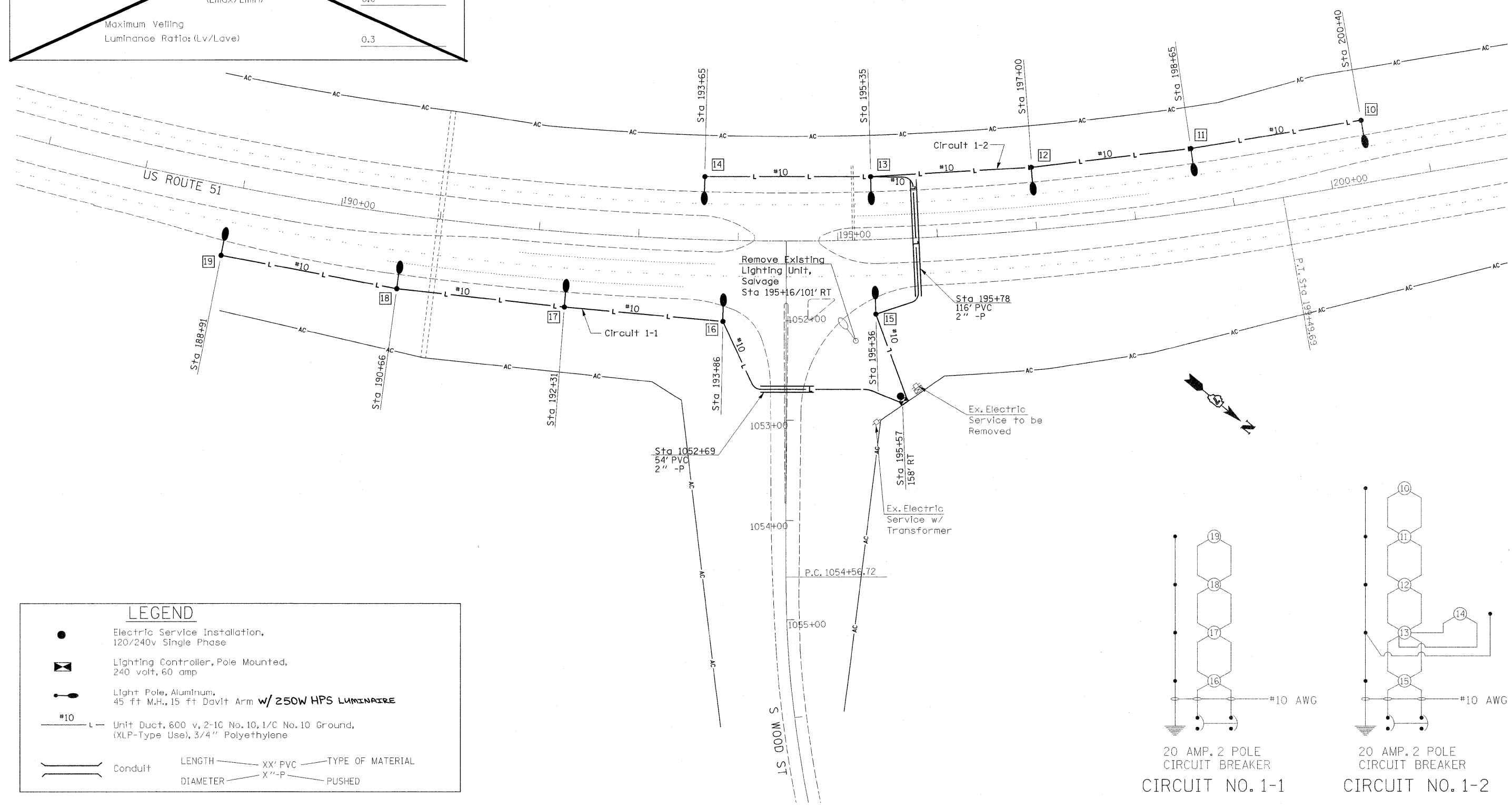
FILE NAME =	USER NAME = mcelleanla	DESIGNED -	REVISED -	STATE OF ILLINOIS DEPARTMENT OF TRANSPORTATION	LIGHTING SCHEDULE	F.A.P. RTE.	SECTION	COUNTY	TOTAL SHEETS	SHEET NO.	
c:\pwork\pwork\mcelleanla\dms35866\774344-shr-light.dgn		DRAWN -	REVISED -			322	(51,52)1-2	MACON	11	5	
PLOT SCALE = 50.0000' / 1" =		CHECKED -	REVISED -			CONTRACT NO. 74344					
PLOT DATE = 5/26/2011		DATE -	REVISED -			SCALE:	SHEET NO. OF SHEETS	STA. TO STA.	FED. ROAD DIST. NO. 7	ILLINOIS	FED. AID PROJECT

PERFORMANCE REQUIREMENTS

NOTE: These performance requirements shall be the minimum acceptable standards of photometric performance for the luminaires.

ILLUMINANCE:	Average Horizontal Illuminance, (Eave)	9.0 Lux
	Uniformity Ratio, (E _{max} /E _{min})	3.0
LUMINANCE:	Average Luminance (Lave)	0.6 Cd/sq m
	Uniformity Ratios, (L _{ave} /L _{min}) (L _{max} /L _{min})	3.5 6.0
	Maximum Veiling Luminance Ratio: (L _v /L _{ave})	0.3

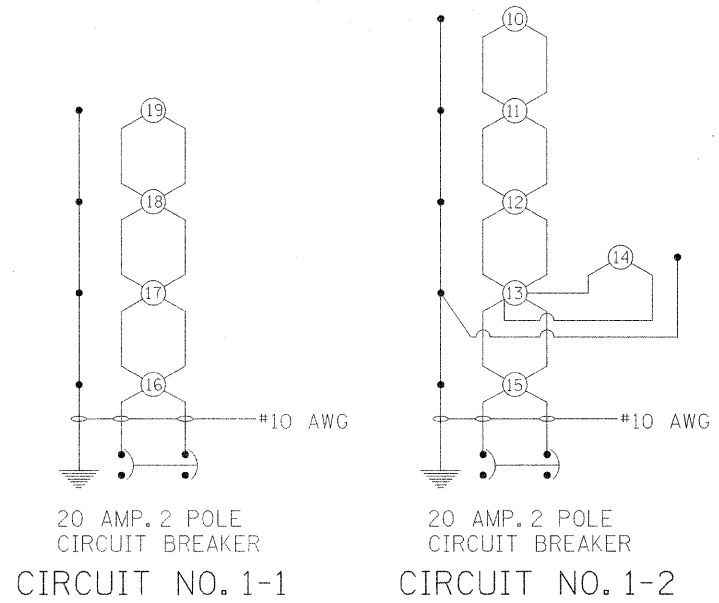
NOTE:
1) POLES TO BE OFFSET 15' FROM EDGE OF PAVEMENT, FURTHER IF IN FLOWLINE OF DITCH, IN THAT CASE, MOVE FURTHER BACK AND OUT OF THE FLOWLINE OR AS DIRECTED BY THE ENGINEER. IF OBSTACLES ARE ENCOUNTERED, THE POLE WILL BE RELOCATED TO AN APPROPRIATE LOCATION AS DIRECTED BY THE ENGINEER.
2) WHERE THE ELECTRIC SERVICE FROM THE POWER COMPANY IS UNDERGROUND, THE TOP OF THE CUSTOMER OWNED METER POLE SHALL BE INSTALLED 6'-6" ABOVE GRADE.



LEGEND

- Electric Service Installation, 120/240v Single Phase
- ⊠ Lighting Controller, Pole Mounted, 240 volt, 60 amp
- ⊢ Light Pole, Aluminum, 45 ft M.H., 15 ft Davit Arm w/ 250W HPS LUMINAIRE
- #10 L Unit Duct, 600 v, 2-1C No.10, 1/C No.10 Ground, (XLP-Type Use), 3/4" Polyethylene
- || Conduit

LENGTH — XX' PVC — TYPE OF MATERIAL
DIAMETER — X" -P — PUSHED



FILE NAME =	USER NAME = mcelleanlo	DESIGNED -	REVISED -
cs:\pw\work\p\dot\mcc\lleanlo\dms39866\774344\sh-t-light.dgn		DRAWN -	REVISED -
		CHECKED -	REVISED -
		DATE -	REVISED -

**STATE OF ILLINOIS
DEPARTMENT OF TRANSPORTATION**

**HIGHWAY LIGHTING
LOCATION 1**

F.A.P. RTE.	SECTION	COUNTY	TOTAL SHEETS	SHEET NO.
322	(51,52)L-2	MACON	11	6
CONTRACT NO. 74344				
FED. ROAD DIST. NO. 7 ILLINOIS FED. AID PROJECT				

SCALE: SHEET NO. OF SHEETS STA. TO STA.

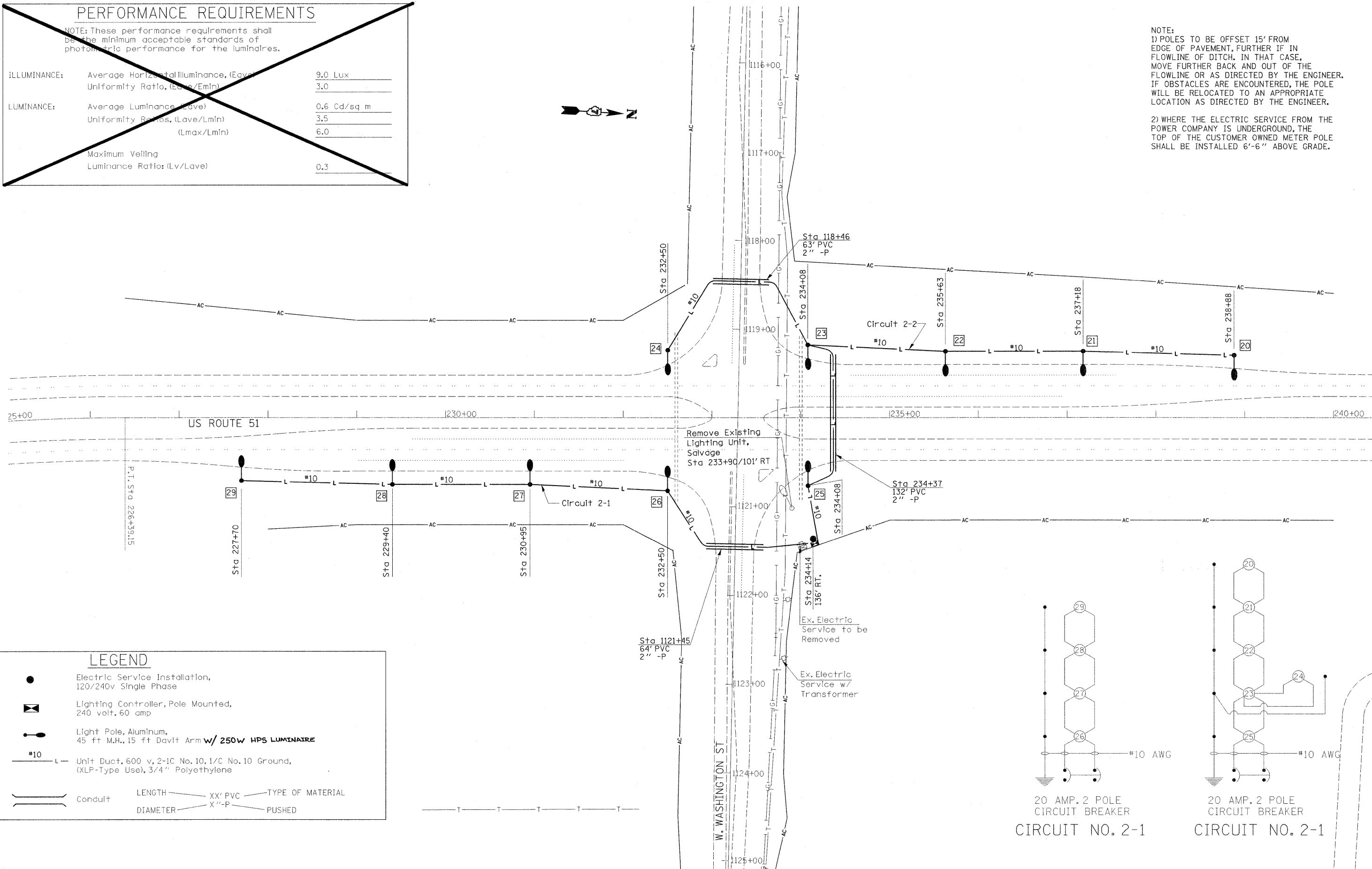
PERFORMANCE REQUIREMENTS

NOTE: These performance requirements shall be the minimum acceptable standards of photometric performance for the luminaires.

ILLUMINANCE:	Average Horizontal Illuminance, (E _{ave})	9.0 Lux
	Uniformity Ratio, (E _{max} /E _{min})	3.0
LUMINANCE:	Average Luminance, (L _{ave})	0.6 Cd/sq m
	Uniformity Ratios, (L _{ave} /L _{min})	3.5
	(L _{max} /L _{min})	6.0
	Maximum Veiling Luminance Ratio: (L _v /L _{ave})	0.3

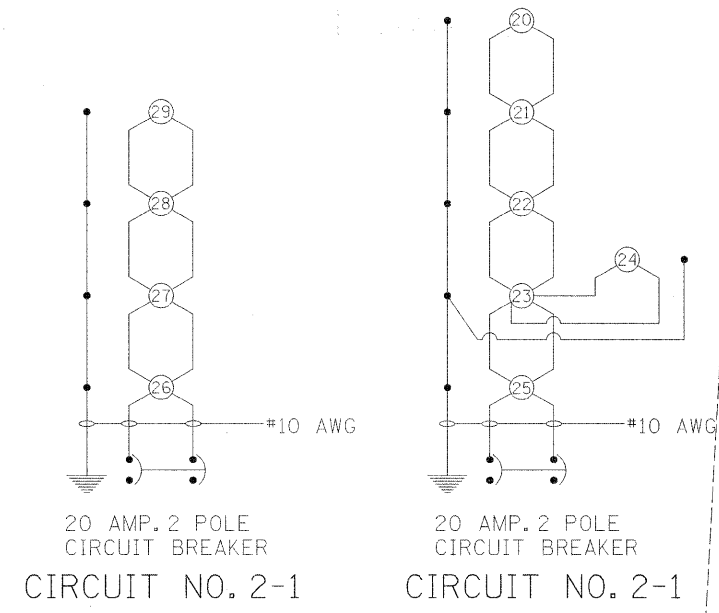
NOTE:
1) POLES TO BE OFFSET 15' FROM EDGE OF PAVEMENT, FURTHER IF IN FLOWLINE OF DITCH. IN THAT CASE, MOVE FURTHER BACK AND OUT OF THE FLOWLINE OR AS DIRECTED BY THE ENGINEER. IF OBSTACLES ARE ENCOUNTERED, THE POLE WILL BE RELOCATED TO AN APPROPRIATE LOCATION AS DIRECTED BY THE ENGINEER.

2) WHERE THE ELECTRIC SERVICE FROM THE POWER COMPANY IS UNDERGROUND, THE TOP OF THE CUSTOMER OWNED METER POLE SHALL BE INSTALLED 6'-6" ABOVE GRADE.



LEGEND

- Electric Service Installation, 120/240v Single Phase
- ☒ Lighting Controller, Pole Mounted, 240 volt, 60 amp
- ⌚ Light Pole, Aluminum, 45 ft M.H., 15 ft Davit Arm w/ 250w HPS LUMINAIRE
- #10 L — Unit Duct, 600 v, 2-1C No. 10, 1/C No. 10 Ground, (XLP-Type Use), 3/4" Polyethylene
- Conduit — LENGTH — XX' PVC — TYPE OF MATERIAL
DIAMETER — X"-P — PUSHED



FILE NAME =	USER NAME = mcelleania	DESIGNED -	REVISED -
c:\pwork\pwork\mcelleania\dms35866\774344-sht-light.dgn		DRAWN -	REVISED -
		CHECKED -	REVISED -
		DATE -	REVISED -

**STATE OF ILLINOIS
DEPARTMENT OF TRANSPORTATION**

HIGHWAY LIGHTING LOCATION 2			
SCALE:	SHEET NO. OF	SHEETS	STA. TO STA.

F.A.P. RTE. 322	SECTION (51,52)L-2	COUNTY MACON	TOTAL SHEETS 11	SHEET NO. 7
CONTRACT NO. 74344				
FED. ROAD DIST. NO. 7 ILLINOIS FED. AID PROJECT				

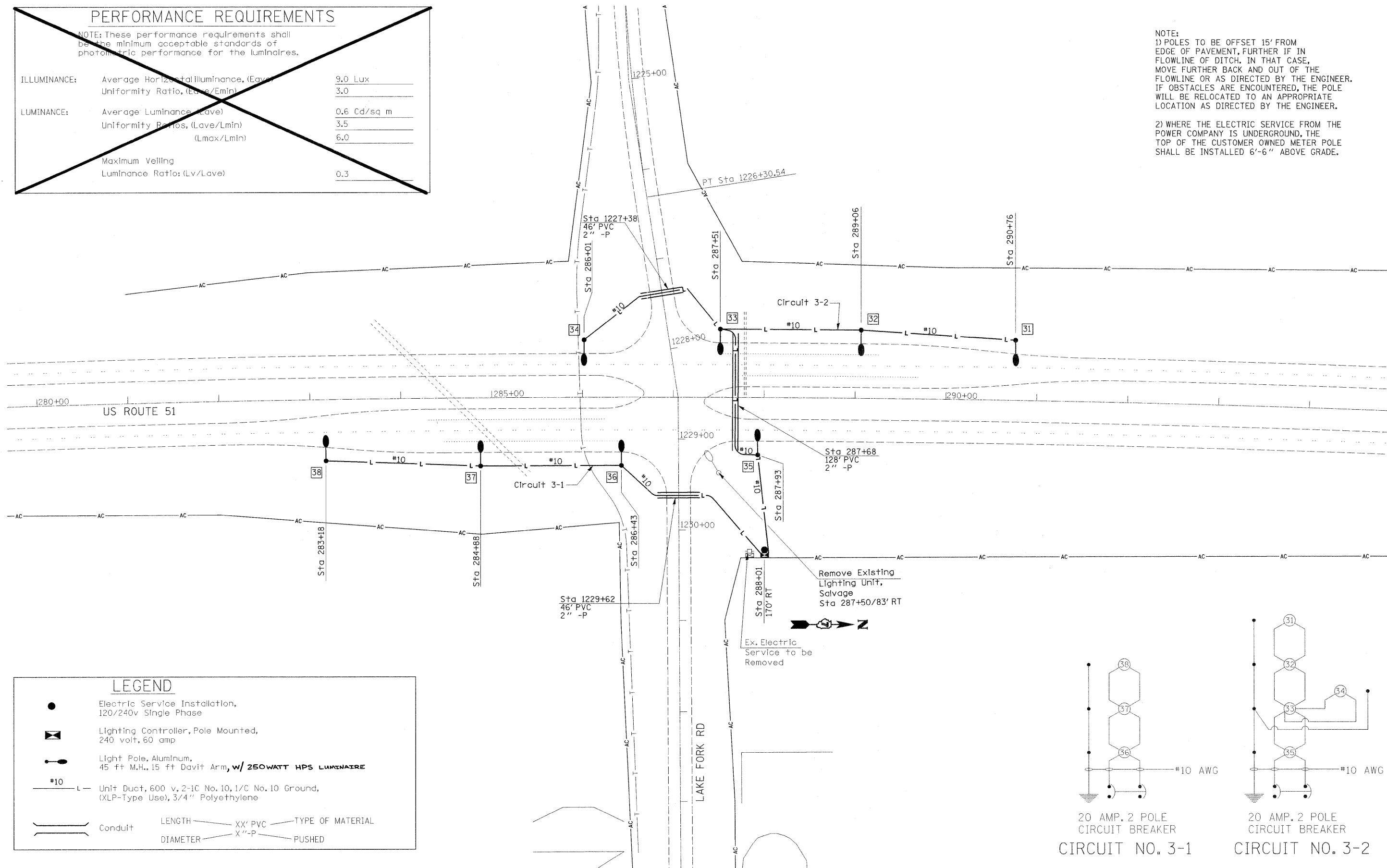
PERFORMANCE REQUIREMENTS

NOTE: These performance requirements shall be the minimum acceptable standards of photometric performance for the luminaires.

ILLUMINANCE:	Average Horizontal Illuminance, (Eavg)	9.0 Lux
	Uniformity Ratio, (Eavg/Emin)	3.0
LUMINANCE:	Average Luminance, (Lave)	0.6 Cd/sq m
	Uniformity Ratios, (Lmax/Lmin)	3.5
	(Lmax/Lmin)	6.0
	Maximum Veiling Luminance Ratio: (Lv/Lave)	0.3

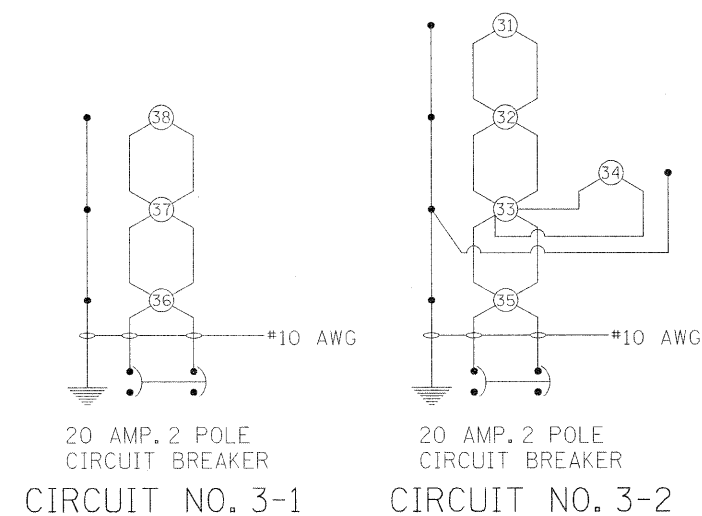
NOTE:
 1) POLES TO BE OFFSET 15' FROM EDGE OF PAVEMENT, FURTHER IF IN FLOWLINE OF DITCH. IN THAT CASE, MOVE FURTHER BACK AND OUT OF THE FLOWLINE OR AS DIRECTED BY THE ENGINEER. IF OBSTACLES ARE ENCOUNTERED, THE POLE WILL BE RELOCATED TO AN APPROPRIATE LOCATION AS DIRECTED BY THE ENGINEER.

2) WHERE THE ELECTRIC SERVICE FROM THE POWER COMPANY IS UNDERGROUND, THE TOP OF THE CUSTOMER OWNED METER POLE SHALL BE INSTALLED 6'-6" ABOVE GRADE.



LEGEND

- Electric Service Installation, 120/240v Single Phase
- ⊠ Lighting Controller, Pole Mounted, 240 volt, 60 amp
- Light Pole, Aluminum, 45 ft M.H., 15 ft Davit Arm, w/ 250WATT HPS LUMINAIRE
- #10 L — Unit Duct, 600 v, 2-1C No. 10, 1/C No. 10 Ground, (XLP-Type Use), 3/4" Polyethylene
- Conduit — LENGTH — XX' PVC — TYPE OF MATERIAL
 DIAMETER — X"-P — PUSHED



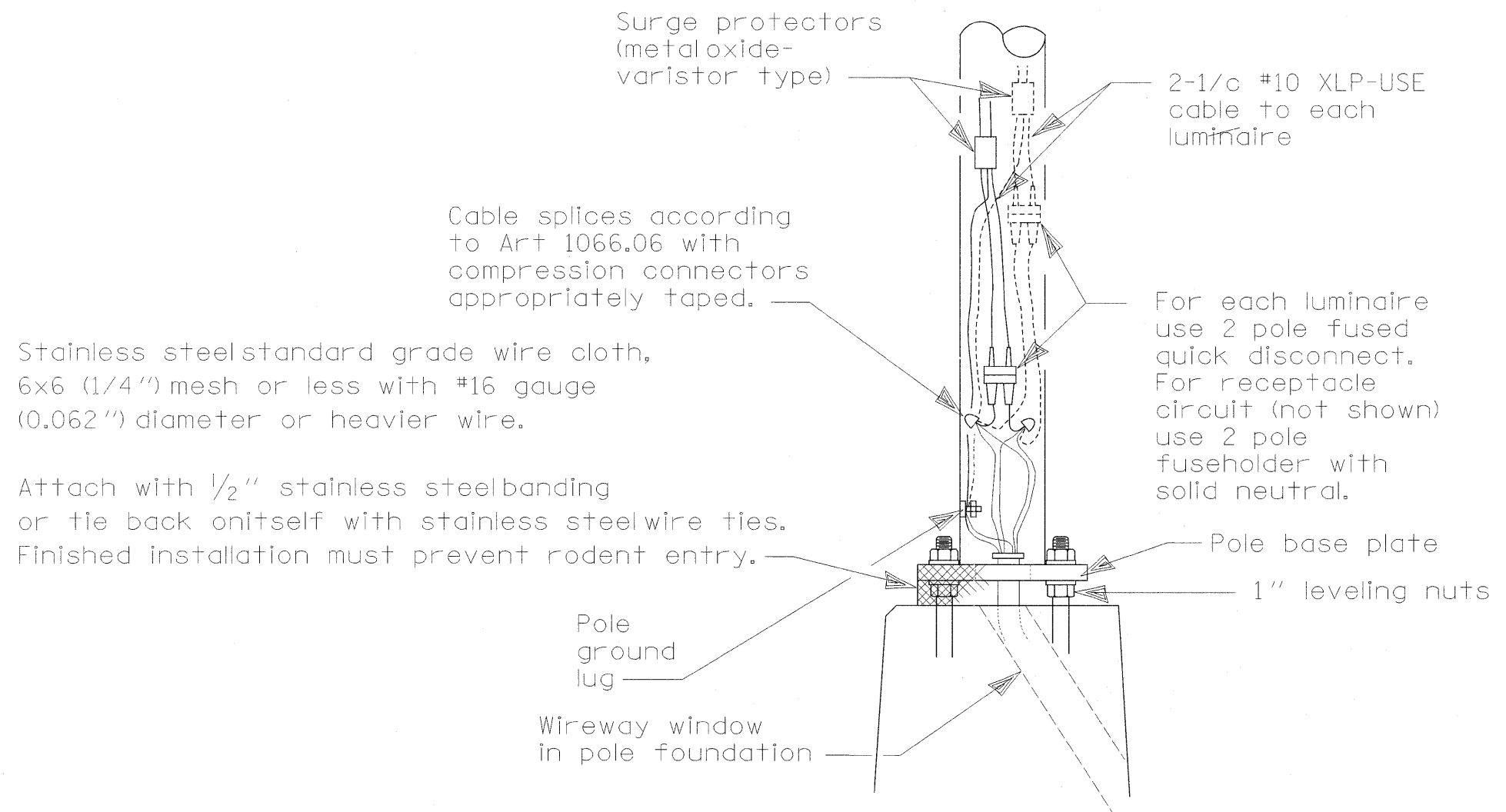
FILE NAME =	USER NAME = mcllellan	DESIGNED -	REVISED -
ct:\pwork\pwork\mcllellan\dms35866\774344-sht-light.dgn		DRAWN -	REVISED -
	PLOT SCALE = 50.0000 // in.	CHECKED -	REVISED -
	PLOT DATE = 5/26/2011	DATE -	REVISED -

STATE OF ILLINOIS
 DEPARTMENT OF TRANSPORTATION

HIGHWAY LIGHTING
 LOCATION 3

SCALE: SHEET NO. OF SHEETS STA. TO STA.

F.A.P. RTE.	SECTION	COUNTY	TOTAL SHEETS	SHEET NO.
322	(51,52)1-2	MACON	11	8
CONTRACT NO. 74344				
FED. ROAD DIST. NO. 7 ILLINOIS FED. AID PROJECT				



WIRING DETAIL

NO SCALE

GENERAL NOTES

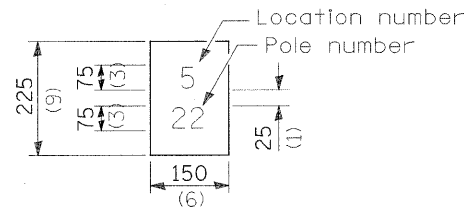
All taped splices shall use 2 layers of electrical tape over 3 layers of rubber tape as required by the Standard Specifications. Coat the finished taped splice with bonding compound.

All cable splices shall be taped unless another method has been specifically approved by the Engineer.

For example purposes the pole is shown on an anchor base. If the pole is required to be set on a breakaway base, consult the Standard Specifications.

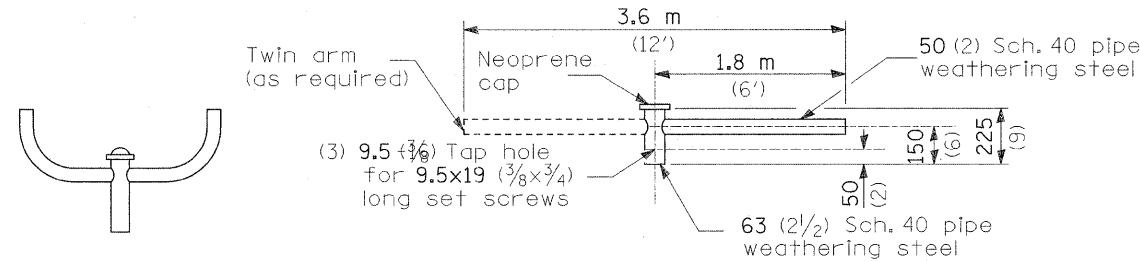
All dimensions are in millimeters (inches) unless otherwise shown.

FILE NAME =	USER NAME = maclellanlo	DESIGNED -	REVISED - Corrected 1/19/06	STATE OF ILLINOIS DEPARTMENT OF TRANSPORTATION	POLE HANDHOLE WIRING DETAIL	F.A.P. RTE.	SECTION	COUNTY	TOTAL SHEETS	SHEET NO.	
ca:\pr\work\p\dot\maclellanlo\dms35866\774344-shr-light.dgn	774344-shr-light.dgn	DRAWN -	REVISED - 1/17/08 Service disconnect			322	(51,52)L-2	MACON	11	9	
PLOT SCALE = 50,0000 1/ in.		CHECKED -	REVISED -			CONTRACT NO. 74344					
PLOT DATE = 5/26/2011		DATE -	REVISED -			FED. ROAD DIST. NO. 7 ILLINOIS FED. AID PROJECT					
						SCALE:	SHEET NO. OF	SHEETS	STA.	TO STA.	



The contractor shall furnish and install a light pole identification of each new light pole, as shown above, incidental to the respective light pole pay item. The numerals shall be 75(3) series "D", black, screened on silver-white type B pressure sensitive reflective sheeting conforming to the requirements of section T602.01 of the Standard Specifications for Traffic Control Items. The numerals shall conform to the FHWA "Standard Alphabets for Highway Signs".

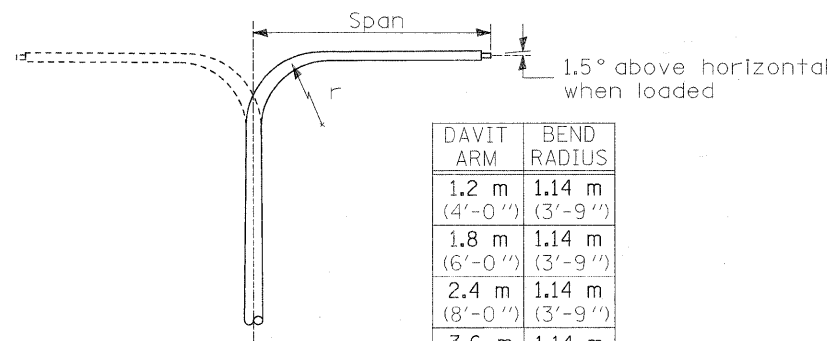
The light pole identification shall be applied to sign base material as specified in section 1069.06 of the Standard Specifications, approximately 180 (7) above the adjacent pavement grade visible to approaching traffic in accordance with Highway Standard 720001.



TWIN TENON

TENON MOUNT BRACKET ARM

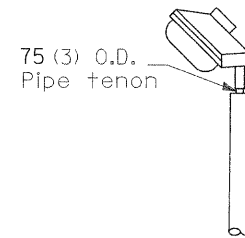
NOTE: Single or twin arm assembly shall be tilted 3° above horizontal.



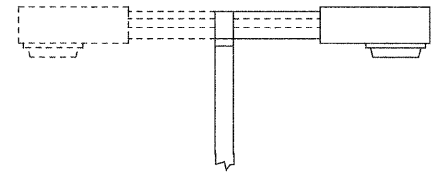
DAVIT ARM

DAVIT ARM-TWIN

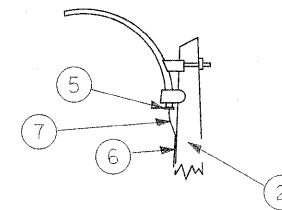
DAVIT ARM	BEND RADIUS
1.2 m (4'-0")	1.14 m (3'-9")
1.8 m (6'-0")	1.14 m (3'-9")
2.4 m (8'-0")	1.14 m (3'-9")
3.6 m (12'-0")	1.14 m (3'-9")



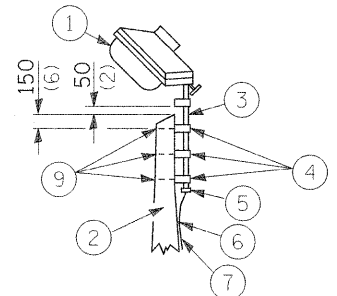
TENON



SHORT BRACKET
 SHORT BRACKET - TWIN

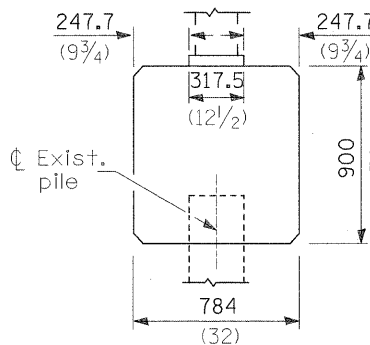
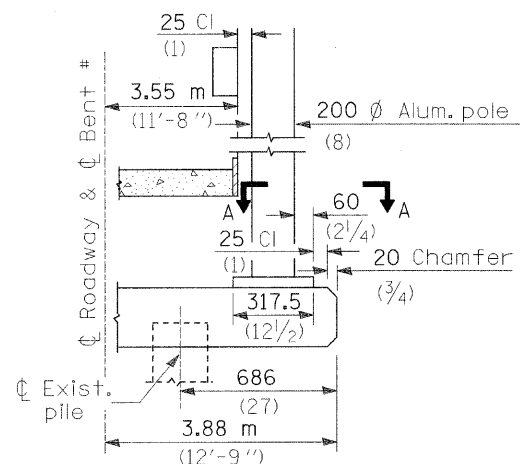


MAST ARM

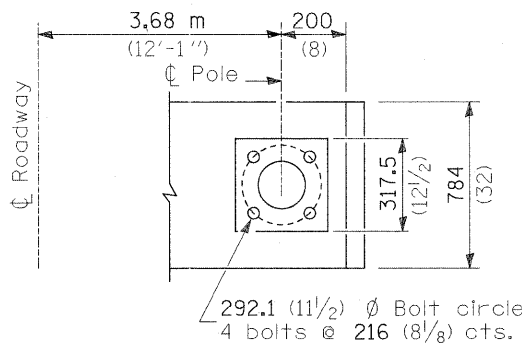


TENON

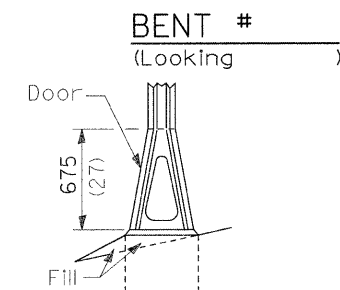
- ① Luminaire
- ② Wood pole, class 3 or better
- ③ 63 (2 1/2) Galv. steel conduit
- ④ Single offset pole band
- ⑤ Conduit bushing
- ⑥ Cable clamps on 600 (24) centers
- ⑦ 2/c #12 Type use cable
- ⑧ 25 (1) Galv. steel conduit 3.0 m (10') in length
- ⑨ 16 (5/8) Ø hot dipped galvanized bolt with flat washer & locknut (3 req'd)
- ⑩ Conduit clamps on 900 (36) centers
- ⑪ Unit duct
- ⑫ Threaded reducer
- ⑬ "C" Condulet, threaded
- ⑭ 40 (1 1/2) Galv. steel conduit for 1 unit duct or 75 (3) galv. steel conduit for 2 or 3 unit ducts.



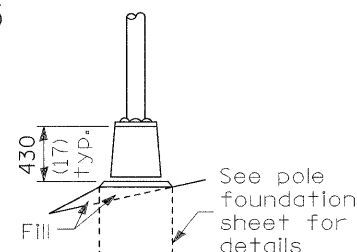
BRIDGE PIER MOUNT



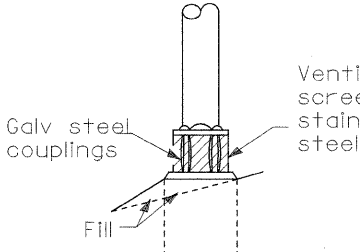
SECTION A-A



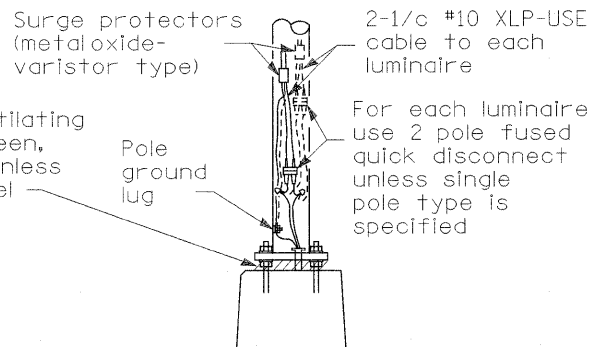
STAINLESS STEEL FLAIR BASE



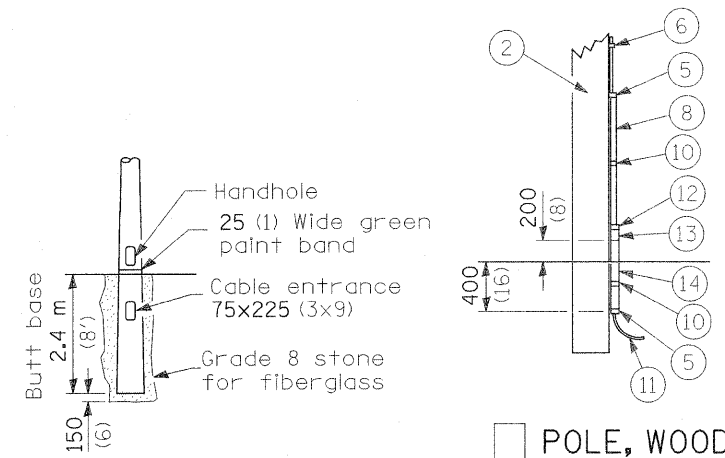
TRANSFORMER BASE



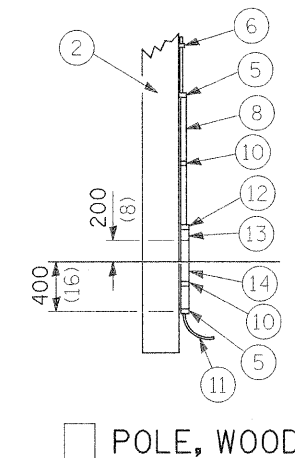
BREAKAWAY COUPLING



ANCHOR



BUTT BASE



POLE, WOOD

POLE LENGTH	DEPTH IN GROUND
19.8 m (65')	3.6 m (12')
18.0 m (60')	3.0 m (10')
16.8 m (55')	2.7 m (9')
16.0 m (50')	2.4 m (8')
13.7 m (45')	2.1 m (7')
12.0 m (40')	2.0 m (6.5')
10.7 m (35')	1.8 m (6')
9.0 m (30')	1.7 m (5.5')

FRANGIBLE

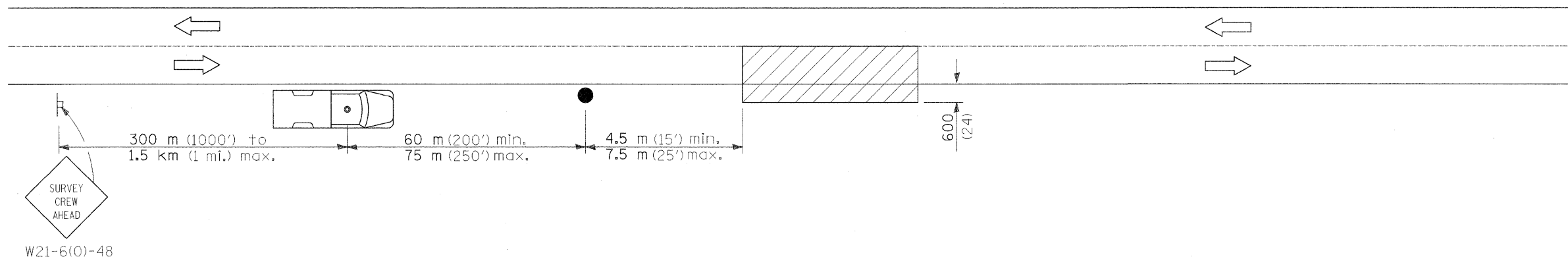
METAL

OR

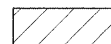
CONCRETE

Details for underground distribution if required

All dimensions are in millimeters (inches) unless otherwise shown.



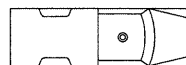
SYMBOLS



Work area



Sign on portable or permanent support



Truck with flashing amber light and dual emergency flashers



Flagger with traffic control sign

TYPICAL APPLICATIONS
Utility operations

All dimensions are in millimeters (inches)
unless otherwise shown.

FILE NAME =	USER NAME = mclellanla	DESIGNED -	REVISED -	STATE OF ILLINOIS DEPARTMENT OF TRANSPORTATION	DETAIL FOR NIGHTTIME LIGHTING INSPECTION	F.A.P. RTE.	SECTION	COUNTY	TOTAL SHEETS	SHEET NO.	
cr:\pwork\pwork\mclellanla\dms35866\774344-ah-light.dgn		DRAWN -	REVISED -			322	(51,52)L-2	MACON	11	11	
		CHECKED -	REVISED -			CONTRACT NO. 74344					
		DATE -	REVISED -			FED. ROAD DIST. NO. 7 ILLINOIS FED. AID PROJECT					
				SCALE:	SHEET NO. OF SHEETS	STA.	TO STA.				