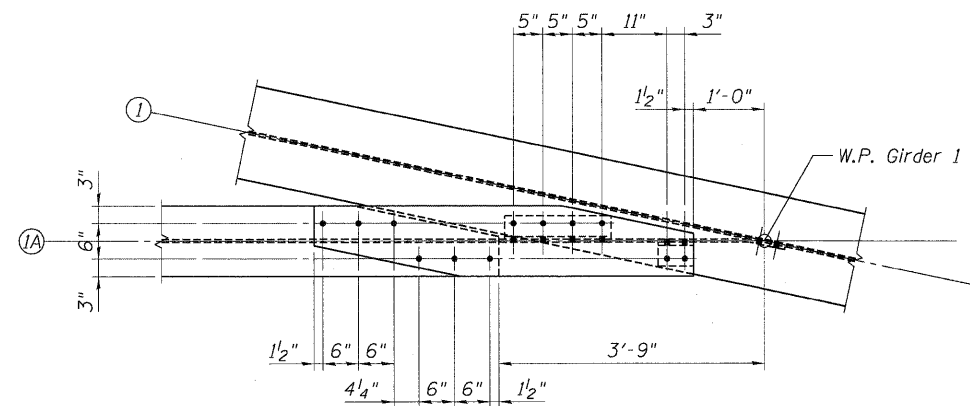
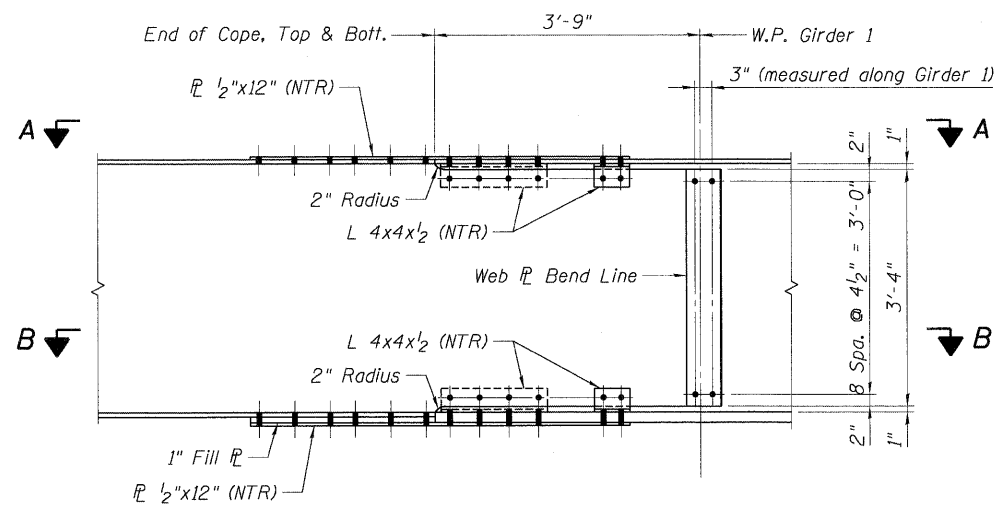


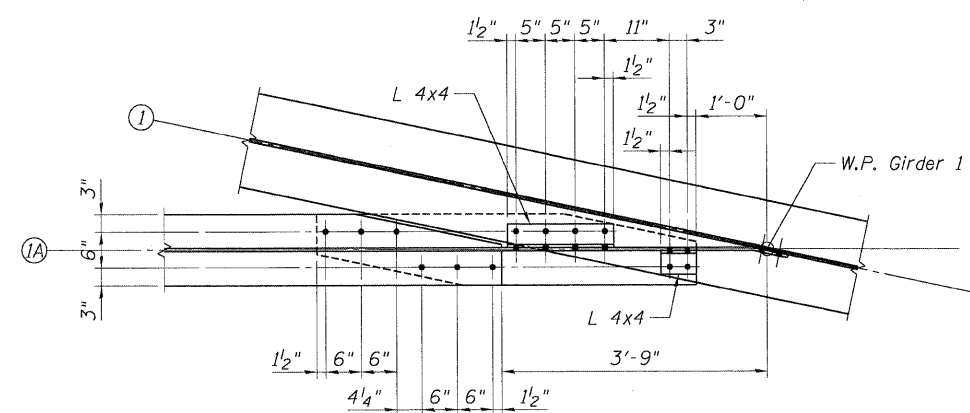
\0820329.CDN\10-001-DE.DGN - 10820329.CDN-05-081-00.DGN
 \0820329.CDN\10-001-DE.DGN - 10820329.CDN-05-081-00.DGN
 \0820329.CDN\10-001-DE.DGN - 10820329.CDN-05-081-00.DGN
 \0820329.CDN\10-001-DE.DGN - 10820329.CDN-05-081-00.DGN



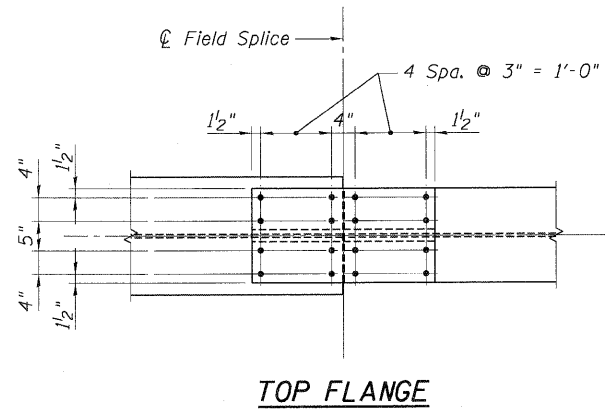
SECTION A-A



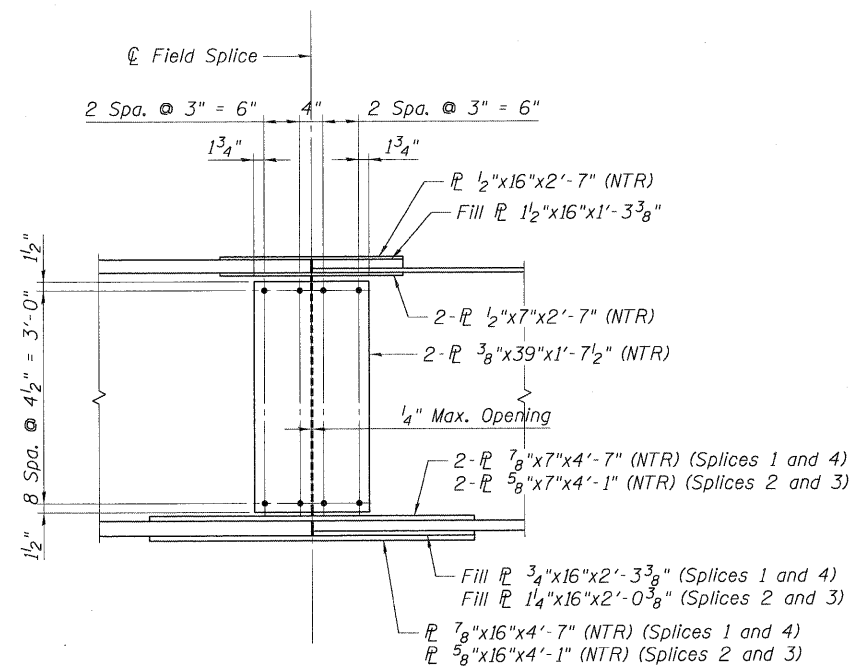
DETAIL 1



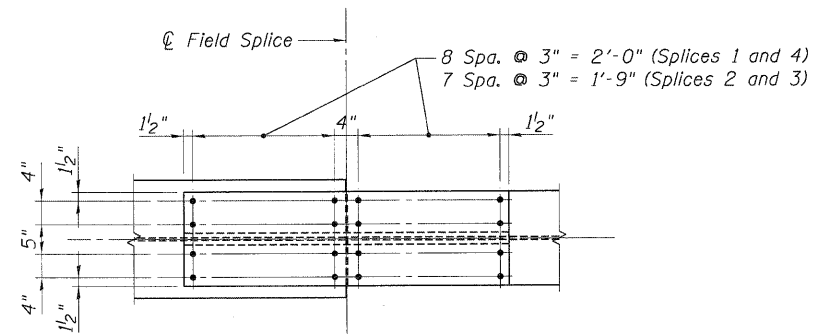
SECTION B-B



TOP FLANGE



FIELD SPLICE ELEVATION



BOTTOM FLANGE

NOTES:

- All structural steel shall be AASHTO M 270 Grade 50 except diaphragms, fill plates, and shim plates may be Grade 36.
- Load carrying components designated "NTR" shall conform to the Supplemental Requirements for Notch Toughness, Zone 2.

FILE NAME =	USER NAME = #USER#	DESIGNED - CCE	REVISED -
#FILE#		DRAWN - CCE	REVISED -
	PLOT SCALE = #SCALE#	CHECKED - JLR	REVISED -
	PLOT DATE = #DATE#	DATE - 05/13/11	REVISED -

STATE OF ILLINOIS
 DEPARTMENT OF TRANSPORTATION
 IL 3 OVER
 TRRA & ST. CLAIR AVENUE

STEEL DETAILS
1 OF 2

SCALE: SHEET NO. SB-27 OF SB-63 STA. 1679+16.65 TO STA.

F.A.P. RTE.	SECTION	COUNTY	TOTAL SHEETS	SHEET NO.
998	82-2-JHVB-1	ST. CLAIR	345	219
SN 082-0329			CONTRACT NO. 76D05	
FED. ROAD DIST. NO.		ILLINOIS FED. AID PROJECT		

TENG TENG & ASSOCIATES, INC.
ENGINEERS/ARCHITECTS/PLANNERS
CHICAGO, ILLINOIS