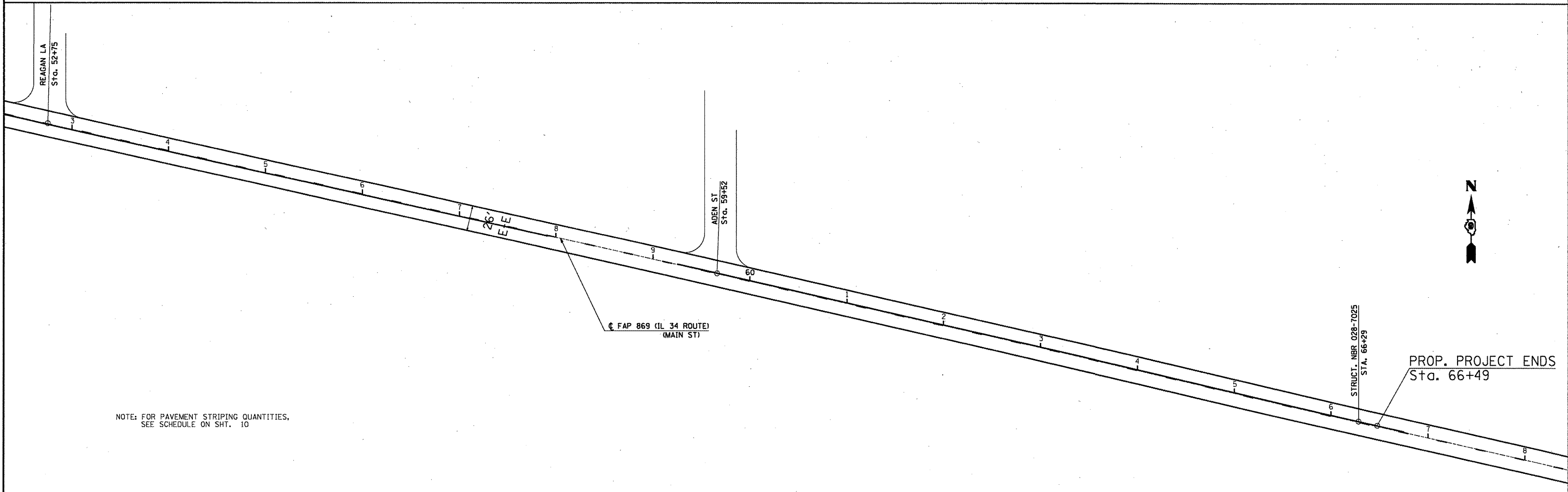


NOTE: FOR PAVEMENT STRIPING QUANTITIES,
SEE SCHEDULE ON SHT. 10



NOTE: FOR PAVEMENT STRIPING QUANTITIES,
SEE SCHEDULE ON SHT. 10

FILE NAME =	USER NAME = aybar.js	DESIGNED -	REVISED -	STATE OF ILLINOIS DEPARTMENT OF TRANSPORTATION	PLAN LAYOUT	F.A.P. RTE. 869	SECTION 10IRS-5	COUNTY FRANKLIN	TOTAL SHEETS 16	SHEET NO. 14	
cs:\pw_work\pripdot\aybar.js\d0285677\shtr	andgn	DRAWN -	REVISED -			SCALE: -----	SHEET NO. -- OF -- SHEETS	STA. 37+00 TO STA. 66+49	CONTRACT NO. 78247		
PLOT SCALE = 100.2653' / IN.	CHECKED -	REVISED -	REVISED -			ILLINOIS FED. AID PROJECT					
PLOT DATE = 4/26/2011	DATE -	REVISED -	REVISED -								