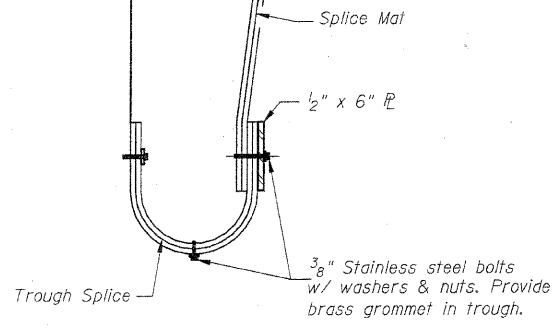
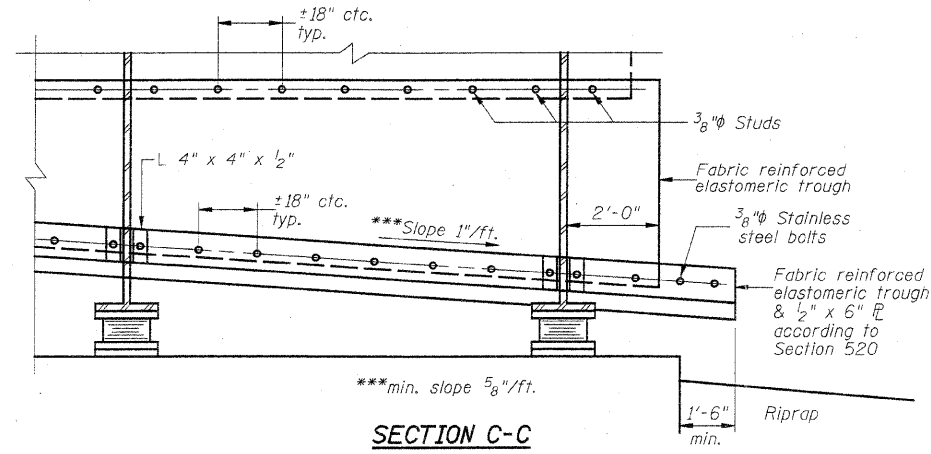


SECTION B-B

(At Right Angles to Back of Abut.)
Horizontal Dimensions are at 50°F.
* Beam flanges shall be clipped. See sheet 33 of 60.
** 3/4" φ x 8" Granular or Solid Flux Filled Headed Studs conforming to Art. 1006.32 of the Standard Specifications.

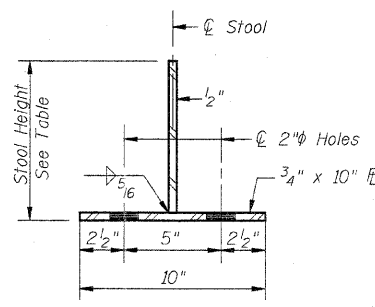


SECTION THRU TROUGH SPLICE

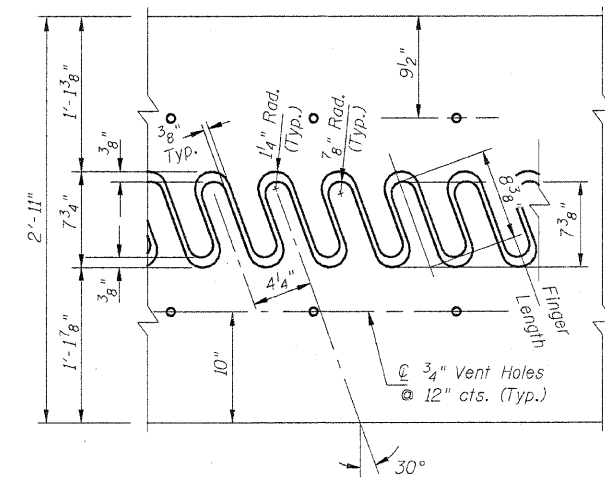
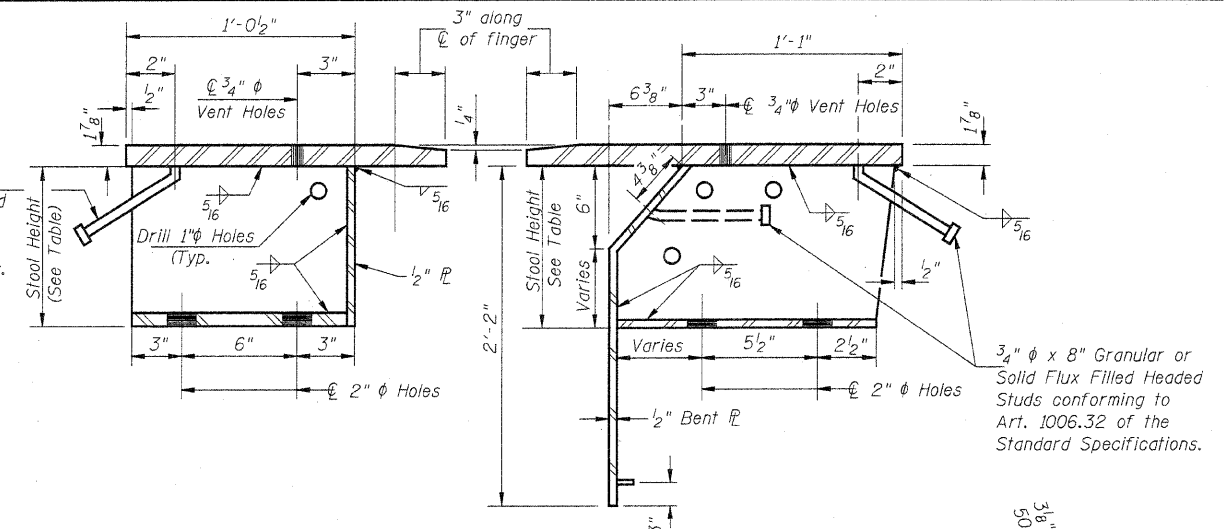


SECTION C-C

SECTION THRU STOOL

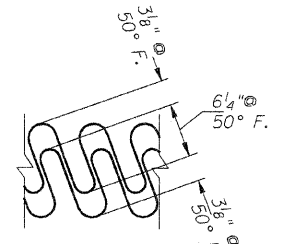


STOOL DETAILS



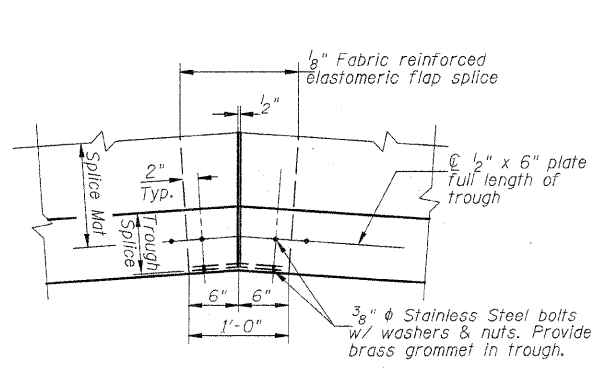
FLAME CUTTING DIAGRAM

Cut from PL 1 7/8" x 2'-11" x 36'-4"

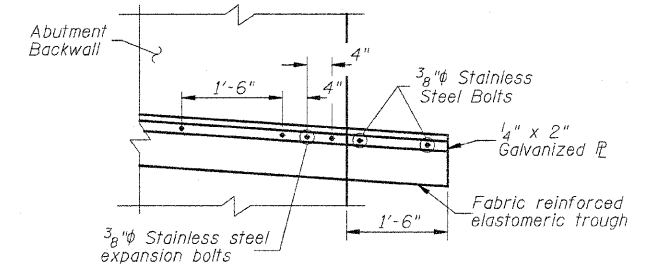


FINGER PLATE SETTING DIAGRAM

Notes:
Bolts for the sliding plate assemblies shall be galvanized according to AASHTO M232.
The steel plates for the sliding plate assemblies shall be AASHTO M270, Grade 50.
All steel in the finger plate expansion joint shall be AASHTO M270, Grade 50, unless otherwise noted.
Finger plate expansion joints shall be assembled in their final relative position with the ends in place for shop inspection and acceptance.



TROUGH SPLICE DETAIL



END OF TROUGH DETAIL AT ABUT.

FINGER PLATE EXPANSION JOINT DETAILS AT WEST ABUTMENT
STRUCTURE NO. 099-4105

DESIGNED	JDH
CHECKED	BAN
DRAWN	TC
CHECKED	JDH

Revised 7-29-11

SHEET NO. 27 60 SHEETS	RTE.	SECTION	COUNTY	TOTAL SHEETS	SHEET NO.
	TR 55	90-16103-01-BR	WILL	255	171
	SN 099-4105		CONTRACT NO. 83126		
FED. ROAD DIST. NO. 7 ILLINOIS			FED. AID PROJECT BRS-		