

RTE. NO.	SECTION	COUNTY	TOTAL SHEETS	SHEET NO.
TR 55	90-16103-01-BR	WILL	255	1
FED. ROAD DIST. NO.	ILLINOIS	CONTRACT NO. 83126		

STATE OF ILLINOIS  
DEPARTMENT OF TRANSPORTATION  
DIVISION OF HIGHWAYS

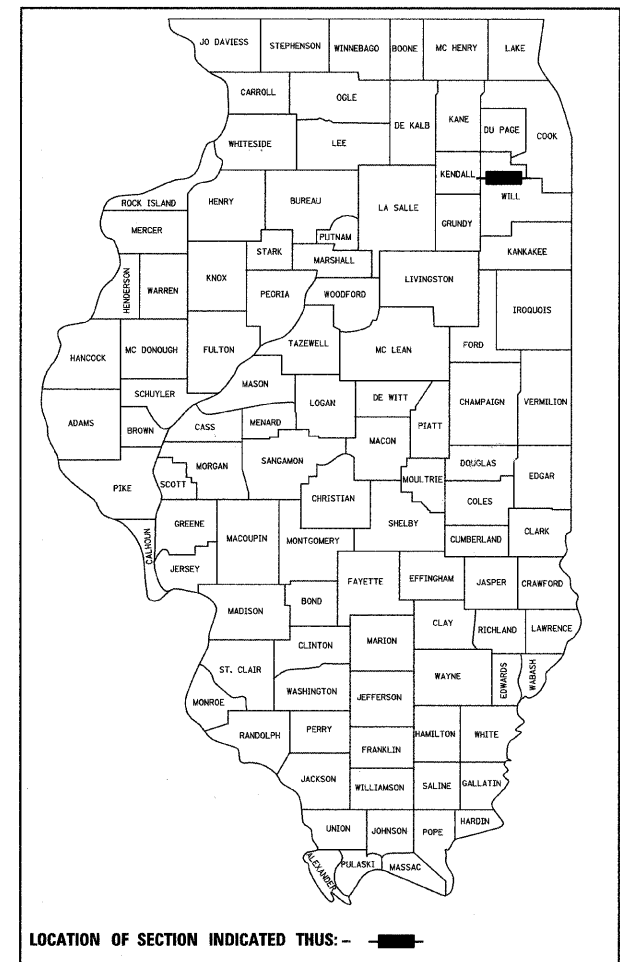
**PLANS FOR PROPOSED  
FEDERAL AID HIGHWAY**

**T.R. 55 (RENNICK RD.)**  
**1200' WEST OF C.N./E.J.&E. RAILROAD TO 600' EAST OF RIVER RD.**  
**ROADWAY AND BRIDGE CONSTRUCTION**  
**SECTION 90-16103-01-BR**  
**PROJECT BROS 0197 (106)**  
**JOB C-91-399-11**  
**PLAINFIELD TOWNSHIP**  
**WILL COUNTY**

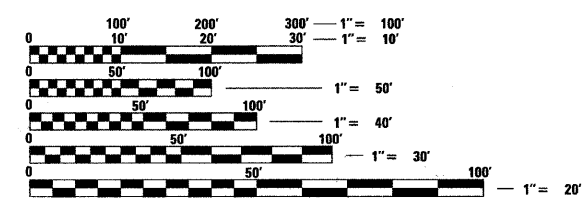
FOR INDEX OF SHEETS, SEE SHEET NO. 2.

**TRAFFIC DATA**  
T.R. 55 (RENNICK RD.): ADT = 10,000 (2030), SPEED LIMIT = 35 MPH  
RIVER RD.: ADT = 8,600 (2030), SPEED LIMIT = 35 MPH

**DESIGN DESIGNATION**  
T.R. 55 (RENNICK RD.), 940 (28) URBAN COLLECTOR 2.24 (FD-20)



**PROPOSED IMPROVEMENT:**  
CONSTRUCTION OF A NEW BRIDGE CARRYING T.R. 55 (RENNICK RD.) OVER THE DUPAGE RIVER AT STA. 121+61.58. NEW BRIDGE CONSISTS OF A FIVE-SPAN COMPOSITE CONTINUOUS WELDED STEEL PLATE GIRDER SUPERSTRUCTURE WITH 8" REINFORCED CONCRETE SLAB SUPPORTED ON PILE BENT ABUTMENTS, CONCRETE PIERS WITH STEEL H-PILES SET IN ROCK OR DRIVEN TO REFUSAL. TOTAL LENGTH OF BRIDGE 623'-2" BK. TO BK. ABUTMENTS, 42'-2" TO 54'-2" VARIABLE DECK WIDTH, 30 DEGREE SKEW ANGLE. PROPOSED STRUCTURE NO. 099-4105.



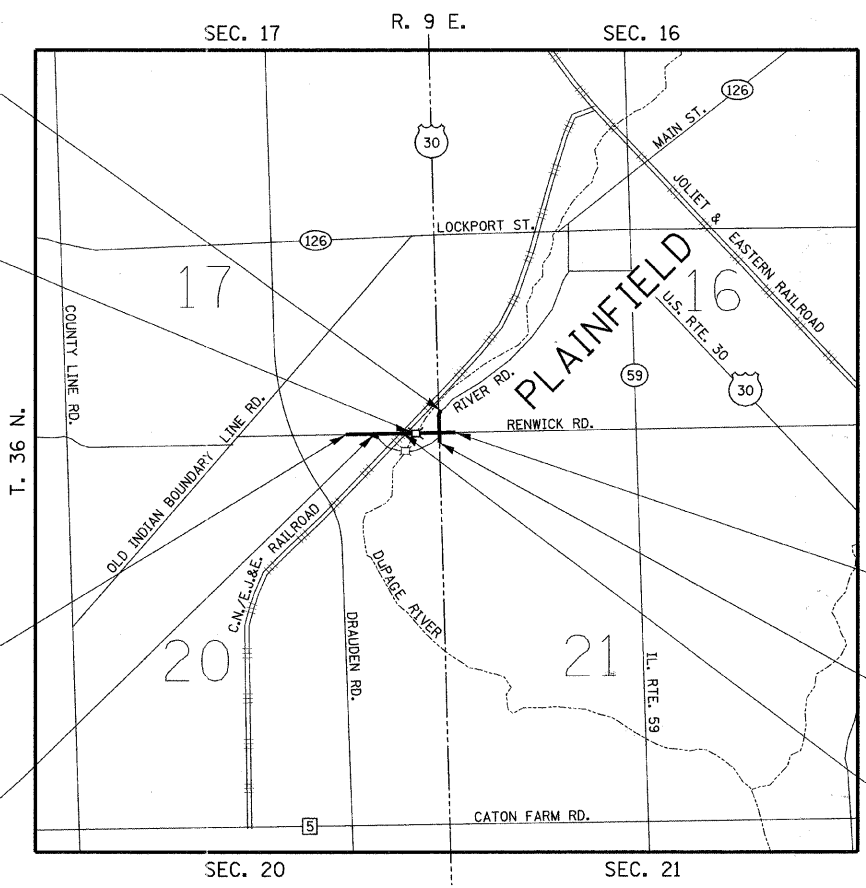
FULL SIZE PLANS HAVE BEEN PREPARED USING STANDARD ENGINEERING SCALES. REDUCED SIZED PLANS WILL NOT CONFORM TO STANDARD SCALES. IN MAKING MEASUREMENTS ON REDUCED PLANS, THE ABOVE SCALES MAY BE USED.

**J.U.L.I.E.**  
**JOINT UTILITY LOCATION INFORMATION FOR EXCAVATION**  
1-800-892-0123  
OR 811

**PROJECT ENGINEER: CRAIG YOUNG**  
**PROJECT MANAGER: ROGER WRIGHT**

**CONTRACT NO. 83126**

**Hutchinson Engineering, Inc.**  
Jacksonville - Since 1945 - Shorewood  
2011 JOB# 2545



IMPROVEMENT ENDS  
RIVER RD.  
STA. 19+81.31

PROJECT BEGINS  
T.R. 55 (RENNICK RD.)  
STA. 105+36.00

IMPROVEMENT  
OLD RENNICK RD.  
BEGINS STA. 48+20.00  
ENDS STA. 49+85.00

PROJECT ENDS  
T.R. 55 (RENNICK RD.)  
STA. 133+44.19

IMPROVEMENT BEGINS  
RIVER RD.  
STA. 7+90.99

RAILROAD OMISSION  
STA. 117+18.31  
TO  
STA. 117+30.24

T.R. 55 (RENNICK RD.):	GROSS LENGTH OF SECTION = 2808.19 LINEAL FEET = 0.53 MILES NET LENGTH OF SECTION = 2796.26 LINEAL FEET = 0.53 MILES
RIVER RD:	GROSS LENGTH OF SECTION = 1190.32 LINEAL FEET = 0.23 MILES NET LENGTH OF SECTION = 1190.32 LINEAL FEET = 0.23 MILES
OLD RENNICK RD:	GROSS LENGTH OF SECTION = 165 LINEAL FEET = 0.03 MILES NET LENGTH OF SECTION = 165 LINEAL FEET = 0.03 MILES



3RD P.M.

5/26/11  
**ROGER WRIGHT**  
2025  
REGISTERED PROFESSIONAL ENGINEER  
STATE OF ILLINOIS  
EXPIRES 11/30/11  
ENGINEERS SEAL

STATE OF ILLINOIS  
DEPARTMENT OF TRANSPORTATION  
DIVISION OF HIGHWAYS

APPROVED MAY 26 20 11  
*Samuel E. Prickett*  
PLAINFIELD TOWNSHIP, HIGHWAY COMMISSIONER

PASSED MAY 27 20 11  
*Chet Chatterjee*  
DISTRICT 1 ENGINEER OF LOCAL ROADS & STREETS

RELEASING FOR BID  
BASED ON LIMITED  
REVIEW MAY 31 20 11  
*Diane M. O'Keefe*  
DEPUTY DIRECTOR OF HIGHWAYS, REGION 1 ENGINEER

**PRINTED BY THE AUTHORITY  
OF THE STATE OF ILLINOIS**

PROGRAM AND OFFICE ENGINEER: CHARLES F. RIDDLE, P.E. (847) 705-4406, SCHAUMBURG

FILE NAME = W:\2545\2545.dgn  
USER NAME = bobcane  
PLOT DATE = 5/23/2011