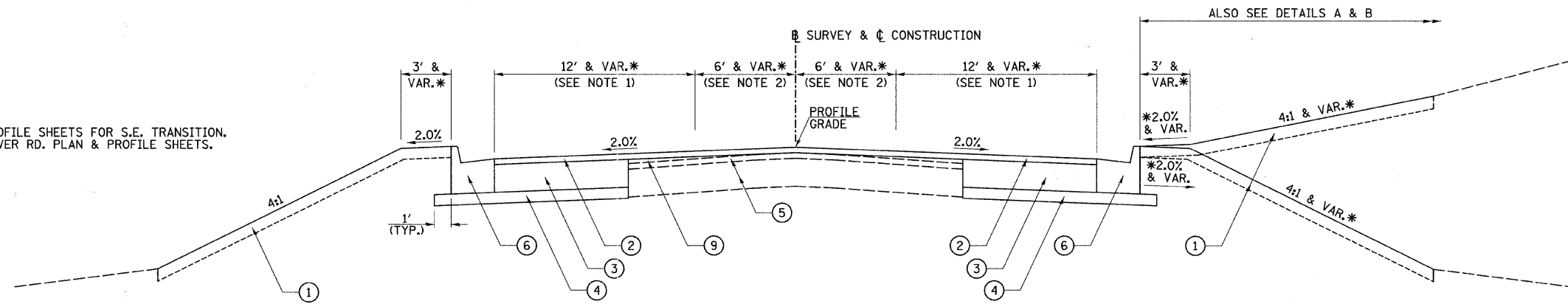


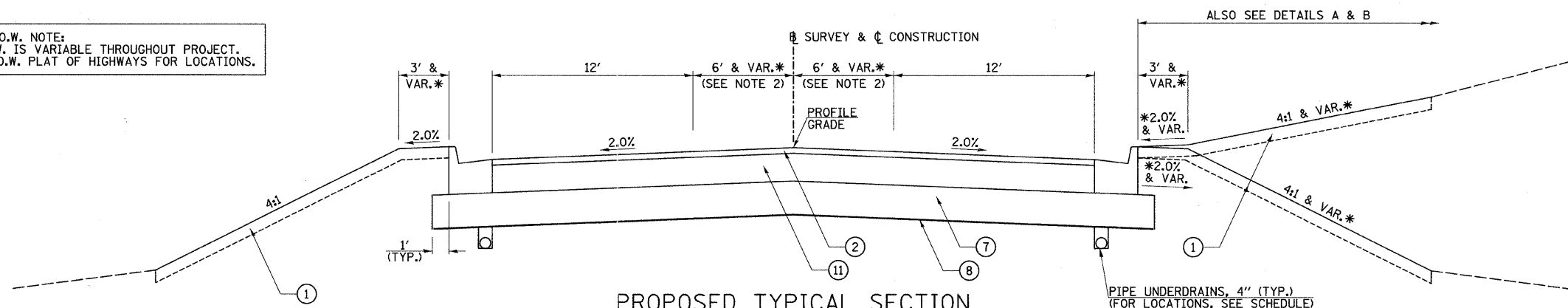
*SEE CROSS SECTIONS.
 **SEE RIVER RD. PLAN & PROFILE SHEETS FOR S.E. TRANSITION.
 ***SEE PROFILE NOTES ON RIVER RD. PLAN & PROFILE SHEETS.



**PROPOSED TYPICAL SECTION
 RIVER RD.**

STA. 7+90.99 TO STA. 10+00.00

R.O.W. NOTE:
 EXISTING & PROPOSED R.O.W. IS VARIABLE THROUGHOUT PROJECT.
 SEE PLAN & PROFILES AND R.O.W. PLAT OF HIGHWAYS FOR LOCATIONS.



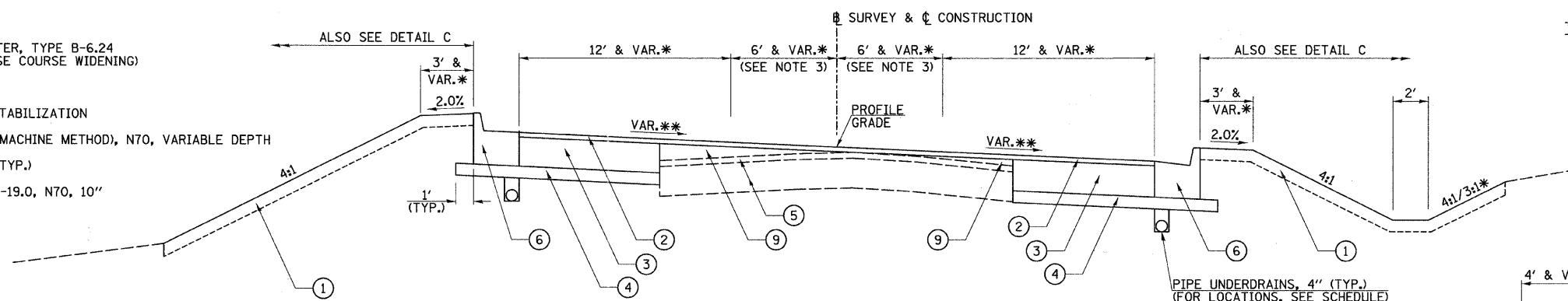
**PROPOSED TYPICAL SECTION
 RIVER RD.**

STA. 10+00.00 TO STA. 13+25.10
 STA. 13+67.10 TO STA. 16+44.10

- ① TOPSOIL FURNISH AND PLACE, 4"
- ② HOT-MIX ASPHALT SURFACE COURSE, MIX "D", N70, 2"
- ③ PCC BASE COURSE WIDENING, 10"
- ④ SUB-BASE GRANULAR MATERIAL, 4"
- ⑤ EXISTING PAVEMENT
- ⑥ COMBINATION CONCRETE CURB & GUTTER, TYPE B-6.24 (POUR MONOLITHICALLY WITH PCC BASE COURSE WIDENING)
- ⑦ AGGREGATE SUBGRADE, 12"
- ⑧ GEOTECHNICAL FABRIC FOR GROUND STABILIZATION
- ⑨ HOT-MIX ASPHALT LEVELING BINDER (MACHINE METHOD), N70, VARIABLE DEPTH
- ⑩ AGGREGATE SHOULDERS, TYPE B, 6" (TYP.)
- ⑪ HOT-MIX ASPHALT BINDER COURSE, IL-19.0, N70, 10"

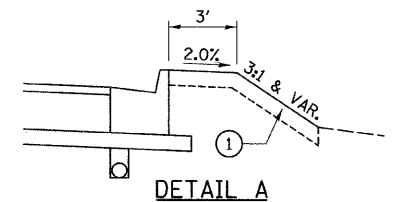
NOTES:

- 1. VARIES FROM 10.65' LT. & 10.00' RT. @ STA. 7+90.99 LT. & RT. TO 12.00' @ STA. 8+38.10.
- 2. VARIES FROM 0.00' @ STA. 8+38.10 TO 6.00' @ STA. 10+48.10.
- 3. VARIES FROM 6.00' @ STA. 16+44.10 TO 0.00' @ STA. 19+81.31.

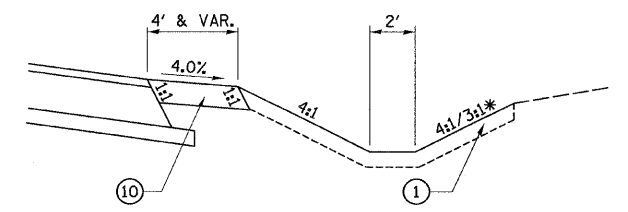


**PROPOSED SUPERELEVATED TYPICAL SECTION
 RIVER RD.**

STA. 16+44.10 TO STA. 19+81.31***



STA. 9+00.00 TO STA. 10+70.00
 STA. 16+45.00 TO STA. 16+50.00



DETAIL C

STA. 19+00.00 TO STA. 19+81.31

FILE NAME = v:\2545\2545.dgn	USER NAME = bdeoraene	DESIGNED -	REVISED -	STATE OF ILLINOIS DEPARTMENT OF TRANSPORTATION	RIVER RD. PROPOSED TYPICAL SECTIONS			F.A. RTE.	SECTION	COUNTY	TOTAL SHEETS	SHEET NO.
		DRAWN -	REVISED -					TR 55	90-16103-01-BR	WILL	255	10
		CHECKED -	REVISED -					CONTRACT NO. 83126				
		DATE -	REVISED -					SCALE: 1"=4'		SHEET NO. 5 OF 5 SHEETS	STA. N/A	TO STA. N/A