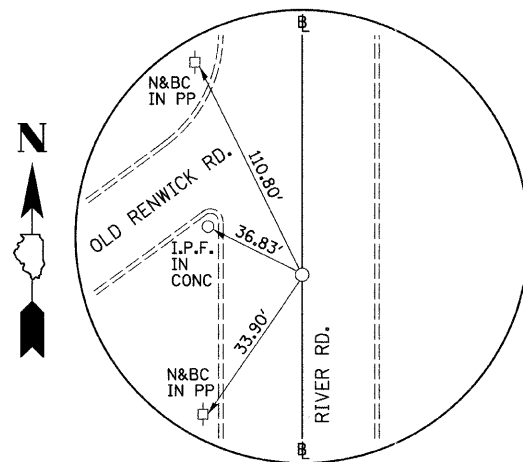
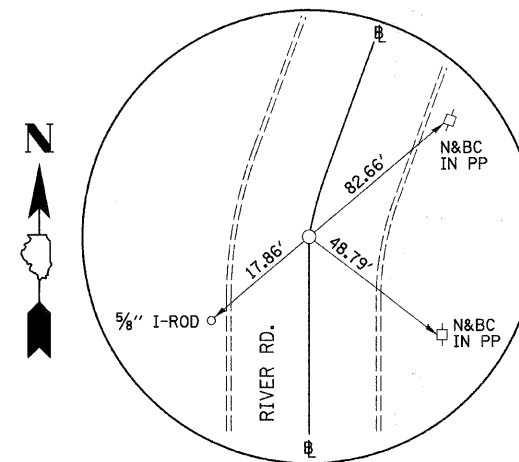


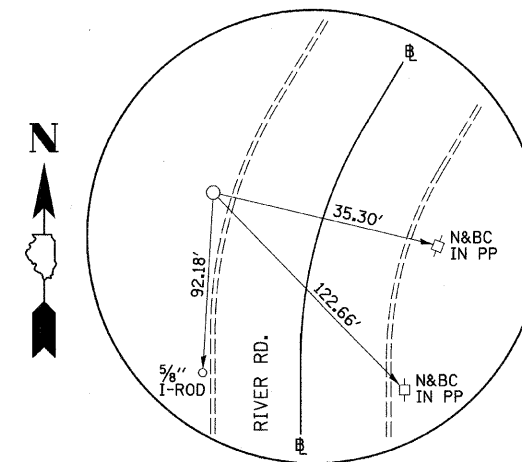
P.O.T. STA. 6+00.00  
RIVER RD.  
N. 9223.645, E. 7735.543  
(MAG NAIL)



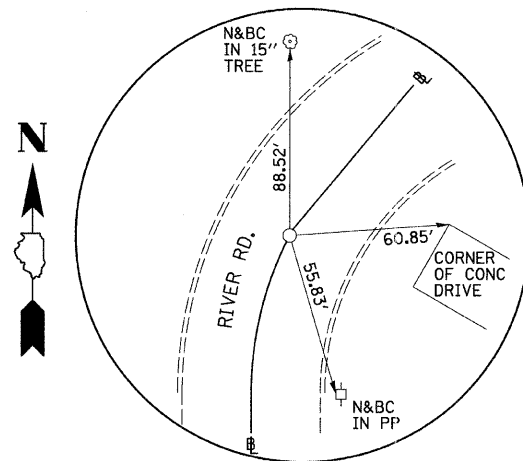
P.O.T. STA. 10+00.00  
RIVER RD.  
N. 9623.619, E. 7730.947  
(MAG NAIL)



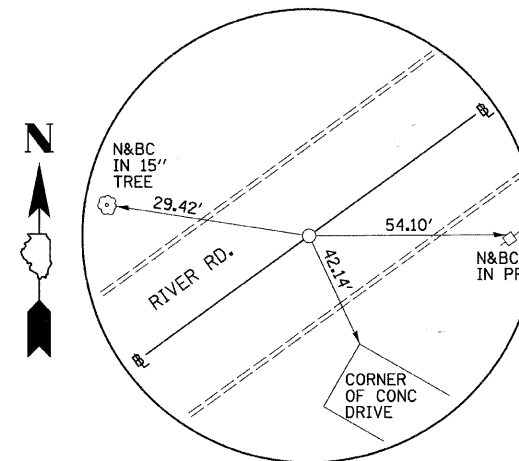
P.C. STA. 17+64.14  
RIVER RD.  
N. 10387.735, E. 7725.375  
(MAG NAIL)



P.I. STA. 18+42.35  
RIVER RD.  
N. 10465.947, E. 7725.077  
(5/8" I-ROD)



P.O.T. STA. 19+07.96  
RIVER RD.  
N. 10510.040, E. 7789.675  
(MAG NAIL)



P.O.T. STA. 20+00.00  
RIVER RD.  
N. 10561.933, E. 7865.699  
(MAG NAIL)

FILE NAME = V:\2545\2545a\003.dgn	USER NAME = bdeoraens	DESIGNED -	REVISED -	<b>STATE OF ILLINOIS DEPARTMENT OF TRANSPORTATION</b>	<b>RIVER RD. TIE POINTS</b>			F.A. RTE.	SECTION	COUNTY	TOTAL SHEETS	SHEET NO.
	PLOT SCALE = 1.000' / IN.	DRAWN -	REVISED -					TR 55	90-16103-01-BR	WILL	255	23
	PLOT DATE = 5/18/2011	CHECKED -	REVISED -					CONTRACT NO. 83126				
		DATE -	REVISED -					FED. ROAD DIST. NO. ILLINOIS FED. AID PROJECT				
				SCALE: 1"=1'		SHEET NO. 3 OF 3 SHEETS		STA. N/A TO STA. N/A				