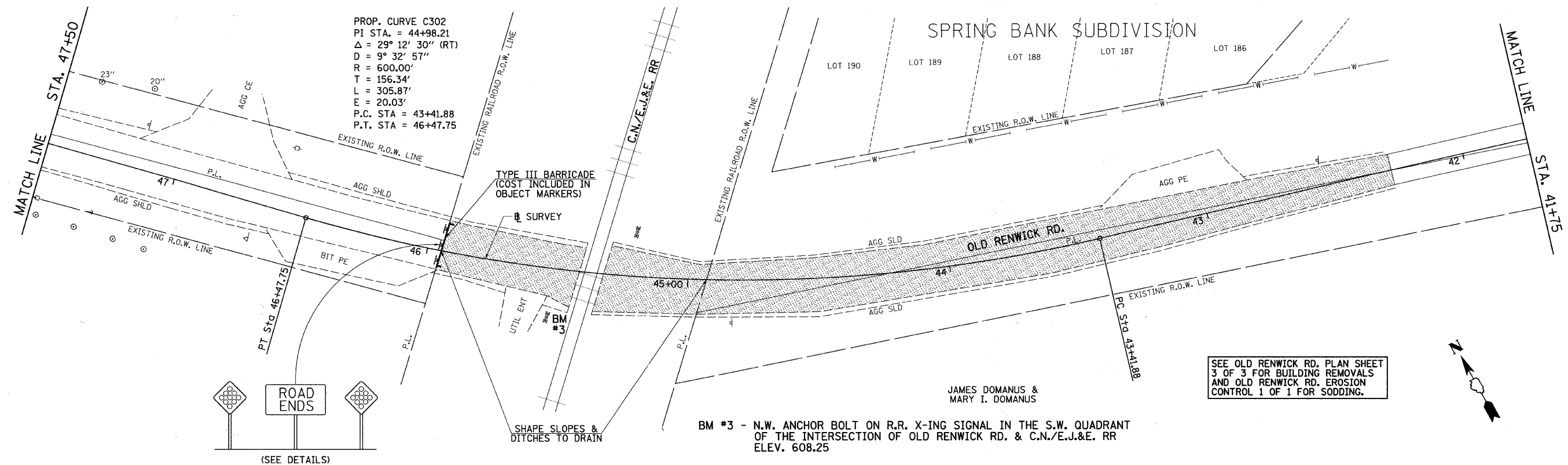


MARCO BJEKICH &  
LORRAINE C. BJEKICH

SPRING BANK SUBDIVISION



PROP. CURVE C302  
PI STA. = 44+98.21  
 $\Delta = 29^\circ 12' 30''$  (RT)  
D = 9° 32' 57"  
R = 600.00'  
T = 156.34'  
L = 305.87'  
E = 20.03'  
P.C. STA = 43+41.88  
P.T. STA = 46+47.75

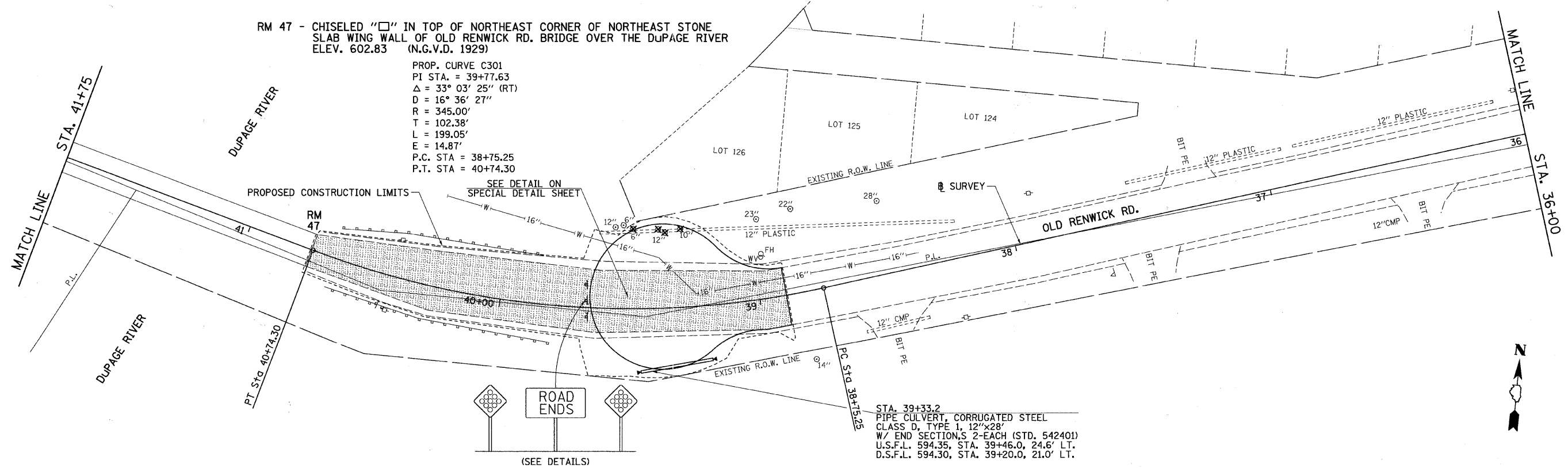
SEE OLD RENWICK RD. PLAN SHEET  
3 OF 3 FOR BUILDING REMOVALS  
AND OLD RENWICK RD. EROSION  
CONTROL 1 OF 1 FOR SODDING.

BM #3 - N.W. ANCHOR BOLT ON R.R. X-ING SIGNAL IN THE S.W. QUADRANT  
OF THE INTERSECTION OF OLD RENWICK RD. & C.N./E.J.&E. RR  
ELEV. 608.25

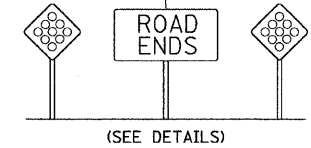


RM 47 - CHISELED "□" IN TOP OF NORTHEAST CORNER OF NORTHEAST STONE  
SLAB WING WALL OF OLD RENWICK RD. BRIDGE OVER THE DUPAGE RIVER  
ELEV. 602.83 (N.G.V.D. 1929)

PROP. CURVE C301  
PI STA. = 39+77.63  
 $\Delta = 33^\circ 03' 25''$  (RT)  
D = 16° 36' 27"  
R = 345.00'  
T = 102.38'  
L = 199.05'  
E = 14.87'  
P.C. STA = 38+75.25  
P.T. STA = 40+74.30



STA. 39+33.2  
PIPE CULVERT, CORRUGATED STEEL  
CLASS D, TYPE 1, 12"x28"  
W/ END SECTIONS 2-EACH (STD. 542401)  
U.S.F.L. 594.35, STA. 39+46.0, 24.6' LT.  
D.S.F.L. 594.30, STA. 39+20.0, 21.0' LT.



FILE NAME = v:\2545\2545p011.dgn	USER NAME = bdeor-aeno	DESIGNED -	REVISED -	<b>STATE OF ILLINOIS DEPARTMENT OF TRANSPORTATION</b>	<b>OLD RENWICK RD., PLAN SHEET</b>		F.A. RTE.	SECTION	COUNTY	TOTAL SHEETS	SHEET NO.	
	PLOT SCALE = 20.000' / IN.	DRAWN -	REVISED -		SCALE: 1"=20'	SHEET NO. 1 OF 3 SHEETS	STA. 47+50 TO STA. 36+00	TR 55	90-16103-01-BR	WILL	255	31
	PLOT DATE = 5/17/2011	CHECKED -	REVISED -					CONTRACT NO. 83126				
		DATE -	REVISED -		FED. ROAD DIST. NO. [ILLINOIS] FED. AID PROJECT							