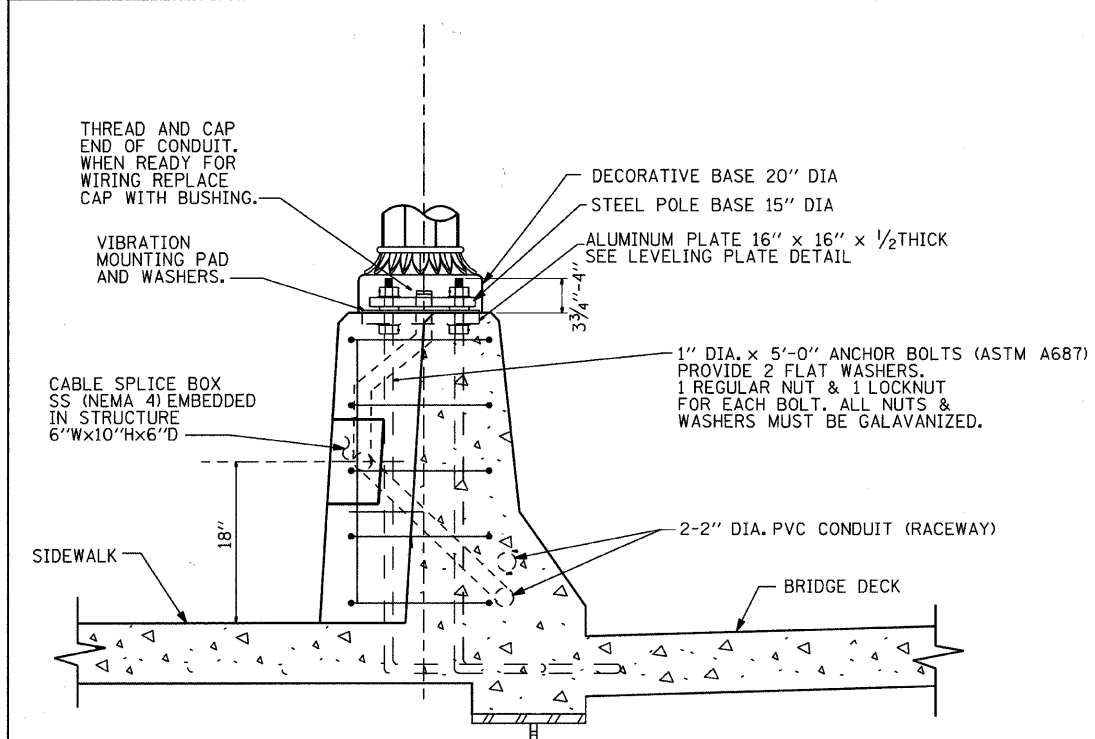
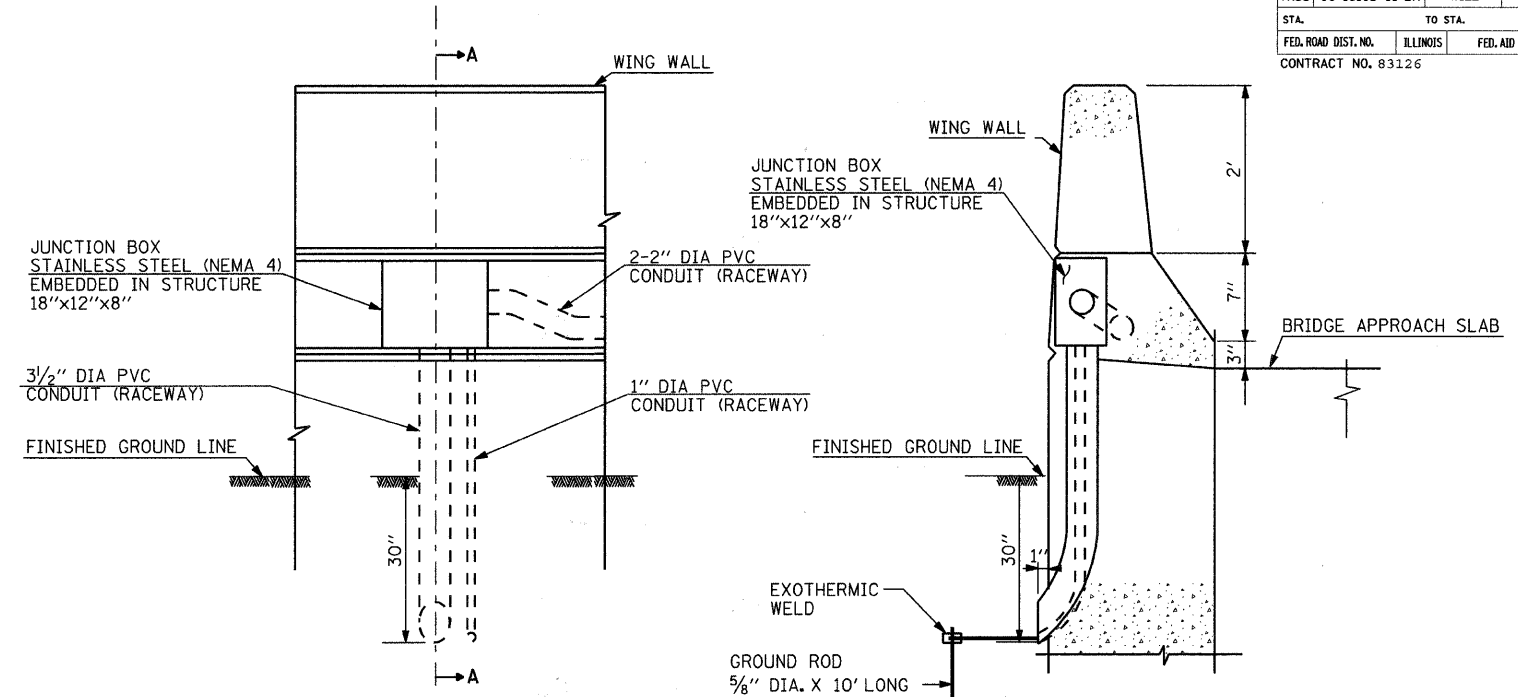


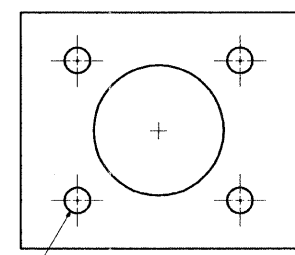
| | | | | |
|---------------------|----------------|------------------|--------------|----------|
| F.A. RYE | SECTION | COUNTY | TOTAL SHEETS | SHEET NO |
| TR55 | 90-16103-01-BR | WILL | 255 | 120 |
| STA. | TO STA. | | | |
| FED. ROAD DIST. NO. | ILLINOIS | FED. AID PROJECT | | |
| CONTRACT NO. 83126 | | | | |



SECTION A-A
(FOR ORNAMENTAL POLE DETAILS REFER TO SHEET NO. E-10)

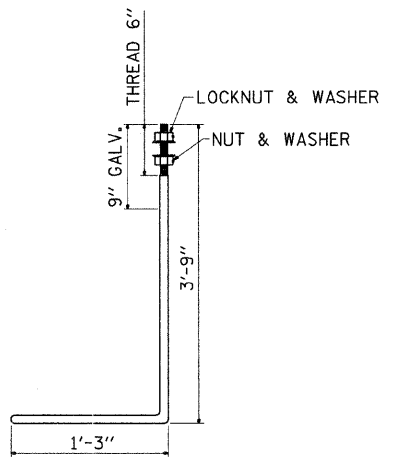


JUNCTION BOX AND RACEWAY ON WING WALL DETAIL

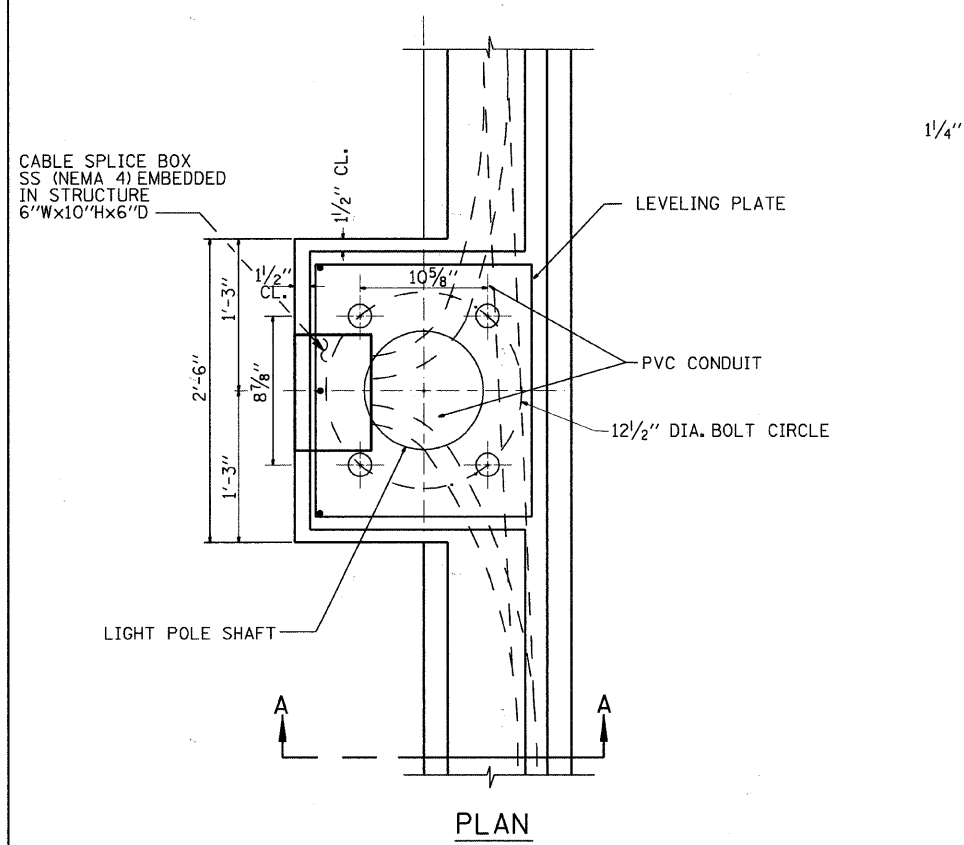


LEVELING PLATE DETAIL

BOLT DIAMETER, BOLT CIRCLE AND OPENING DIAMETER IN POLE BASE PLATE - PLEASE REFER TO MANUFACTURER POLE DETAIL DRAWING



1" DIA. ANCHOR BOLT



PLAN

NOTES

- JUNCTION BOX ON WING WALL AND CABLE SPLICE BOX SHALL BE INSTALLED AT THE LOCATION AS SHOWN ON PLAN OR DIRECTED BY THE ENGINEER.
- CABLE SPLICING WILL BE PERMITTED ONLY IN JUNCTION BOX AND IN LIGHT POLE HANDHOLE.
- THE JUNCTION BOX AND CABLE SPLICE BOX, STAINLESS STEEL (NEMA 4) SHALL BE EMBEDDED IN CONCRETE WITH FLUSH COVER. THE JUNCTION BOX AND CABLE SPLICE BOX, STAINLESS STEEL (NEMA 4) SHALL BE U.L. LISTED AND LABELED.
- RACEWAY SHALL BE PVC CONDUIT.
- EXPANSION FITTINGS SHALL BE INSTALLED IN ALL RACEWAY RUNS CROSSING STRUCTURAL EXPANSION JOINTS.
- 1" DIA. X 5 FT LONG, ASTM A-687, ANCHOR BOLT SHALL BE PROVIDED WITH ONE REGULAR NUT, ONE LOCK NUT AND TWO FLAT WASHERS. ALL NUTS AND WASHERS SHALL BE GALVANIZED.
- COST OF ANCHOR BOLTS WITH HARDWARE LEVELING PLATE, RACEWAYS WITH FITTINGS AND JUNCTION/CABLE SPLICE BOX ARE INCLUDED IN THE COST OF THE BRIDGE STRUCTURE.
- FABCO PAD(SA-47) AND FABREEKA WASHERS SHALL BE INSTALLED, ACCORDING TO THE MANUFACTURER INSTRUCTIONS, ON THE LIGHT POLE MOUNTED ON BRIDGE.
- FOUNDATION IN BRIDGE PARAPET WALL FOR REINFORCEMENT DETAILS, PLEASE REFER TO BRIDGE STRUCTURAL DRAWINGS.

212 TIMBERCREST DRIVE
SCHALMBURG, ILLINOIS
60193-1572

| REVISIONS | |
|-----------|------|
| NAME | DATE |
| | |
| | |
| | |
| | |
| | |
| | |
| | |

ILLINOIS DEPARTMENT OF TRANSPORTATION
T.R. 55 (RENWICK RD.)
PLANFIELD TOWNSHIP, WILL COUNTY
LIGHT/JUNCTION MOUNTED
ON BRIDGE CONCRETE PARAPET

SCALE: NONE
DATE: **DATE**

DRAWN BY
CHECKED BY