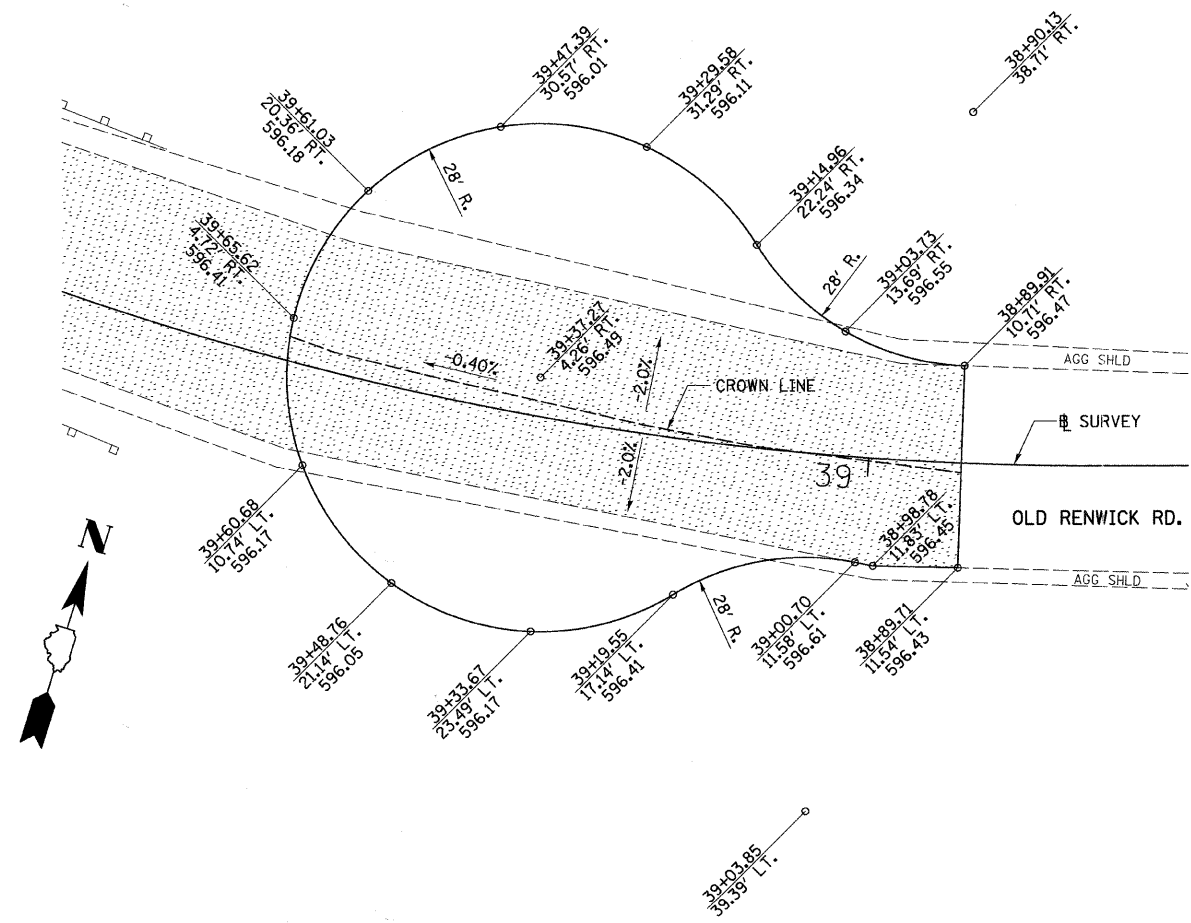
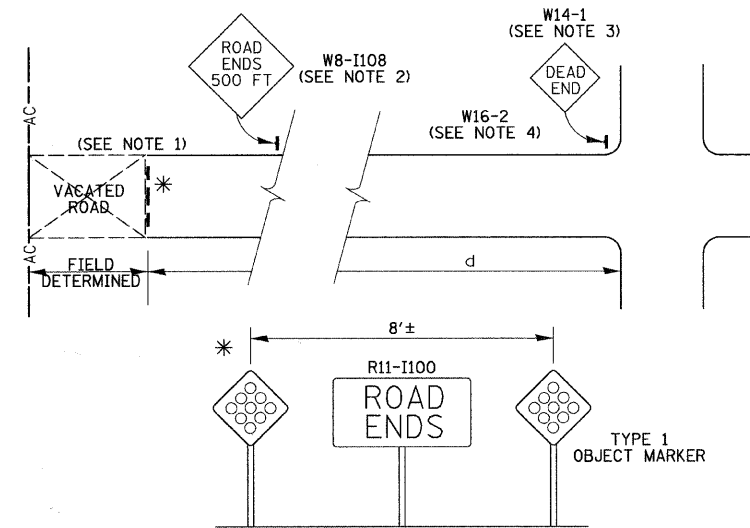


TYPICAL SECTION



PLAN

CUL-DE-SAC DETAILS



LOW VOLUME ROAD CLOSURE

NOTES:

1. OLD PAVEMENT SHOULD BE REMOVED TO SOME DISTANCE BEYOND THE CLOSURE POINT OR COVERED WITH DIRT TO MINIMIZE THE ILLUSION OF THE ROAD CONTINUING AND TO PROVIDE A REASONABLE SAFE RECOVERY AREA. THE MARKERS FOR THE END OF ROADWAY SHALL CONFORM WITH SECTION 3C-4 OF THE MUTCH.
2. USE WHERE "d" EXCEEDS 1,500 FEET OR WHERE SIGHT DISTANCE TO THE CLOSURE IS LESS THAN 500 FEET.
3. THE DEAD END SIGN (W14-1) SHALL BE USED IN ALL CASES EXCEPT WHERE THE CLOSURE POINT IS VISIBLE FROM THE CROSSROAD.
4. WHERE THE POINT OF CLOSURE IS OVER 1 MILE FROM THE LAST CROSSROAD, A MILES AHEAD PLATE (W16-2) SHALL BE USED.

SIGNING DETAILS

FILE NAME = V:\2545\2545\007.dgn	USER NAME = bdeoraene	DESIGNED -	REVISED -
		DRAWN -	REVISED -
		CHECKED -	REVISED -
		DATE -	REVISED -

STATE OF ILLINOIS
DEPARTMENT OF TRANSPORTATION

OLD RENWICK RD.
CUL-DE-SAC & SIGNING DETAILS

SCALE: 1"=10' SHEET NO. 5 OF 6 SHEETS STA. N/A TO STA. N/A

F.A. RTE.	SECTION	COUNTY	TOTAL SHEETS	SHEET NO.
TR 55	90-16103-01-BR	WILL	255	128
CONTRACT NO. 83126				
FED. ROAD DIST. NO. ILLINOIS FED. AID PROJECT				