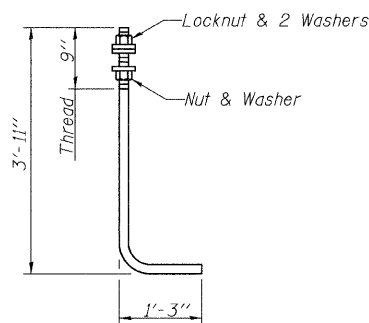
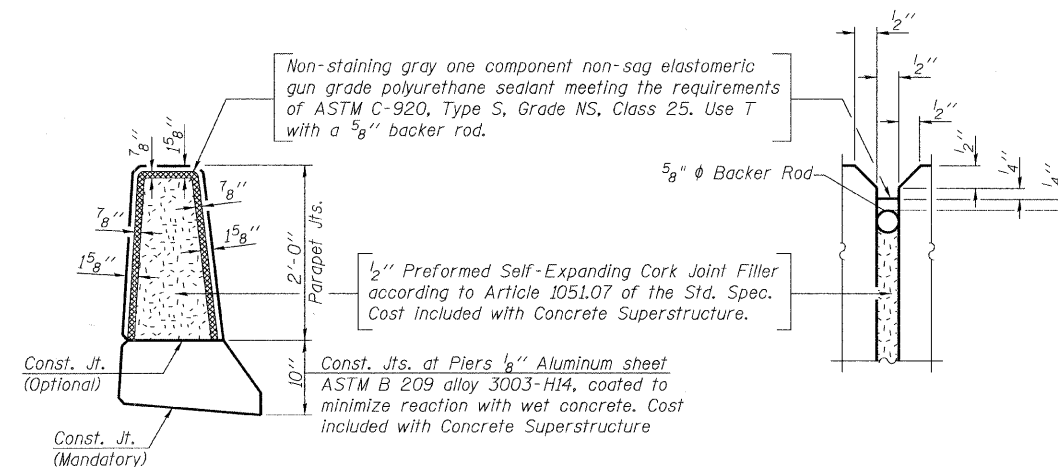


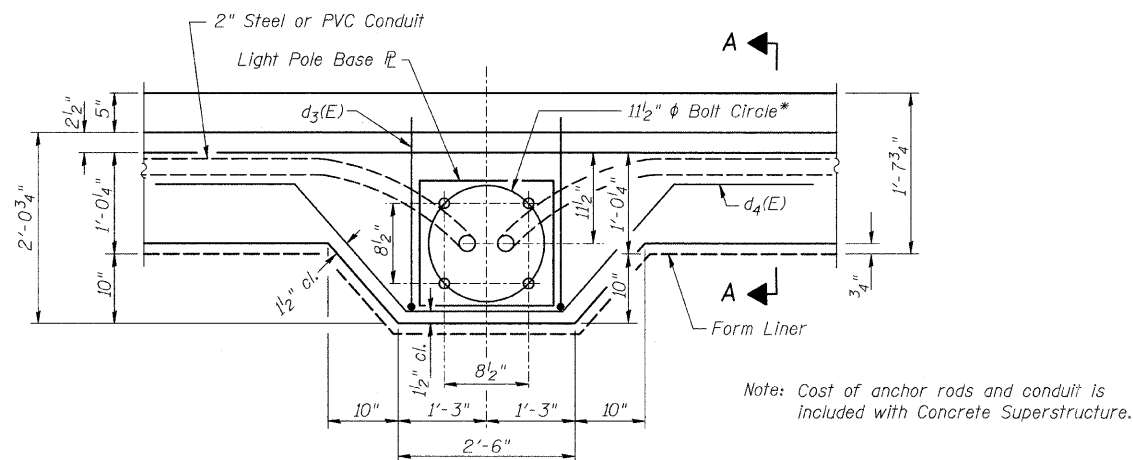
**SECTION A-A**



**ANCHOR ROD**  
Diameter as specified for light poles.  
(ASTM F 1554 Grade 105)

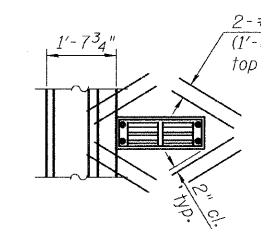


**PARAPET JOINT DETAILS**

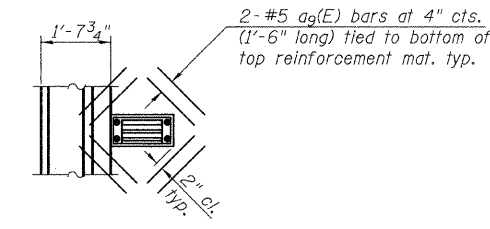


**LIGHT POLE MOUNTING PLAN**

\* Match Light Pole Manufacturer Requirements.



**PLAN**  
Scupper DS-12 North Parapet



**PLAN**  
Scupper DS-11 South Parapet

Note:  
Cut longitudinal reinforcement to clear drainage scuppers.

**SUPERSTRUCTURE DETAILS**  
**STRUCTURE NO. 099-4105**

DESIGNED	JOH
CHECKED	BAN
DRAWN	TC
CHECKED	JOH

2545B018

SHEET NO. 18	RTE.	SECTION	COUNTY	TOTAL SHEETS	SHEET NO.
	TR 55	90-16103-01-BR	WILL	255	162
60 SHEETS	SN 099-4105		CONTRACT NO. 83126		
FED. ROAD DIST. NO. 7 ILLINOIS			FED. AID PROJECT BRS-		