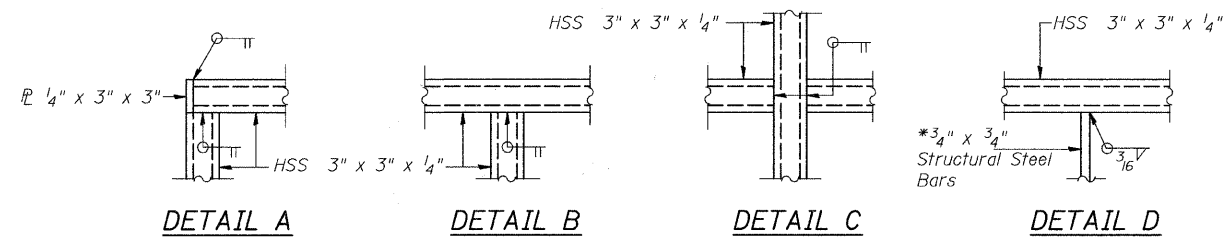
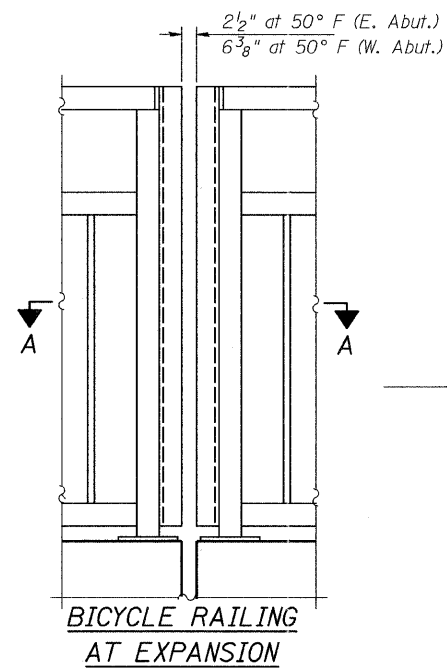
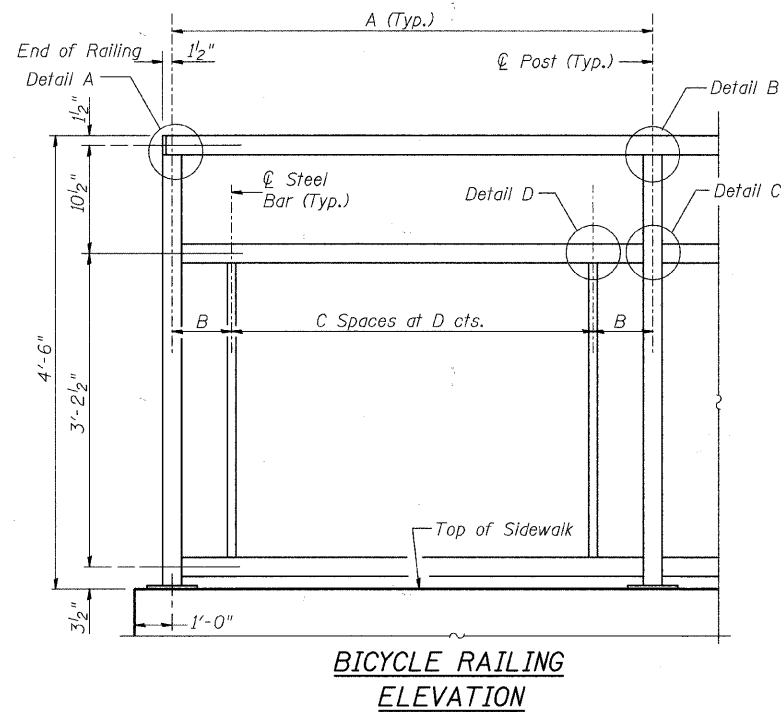
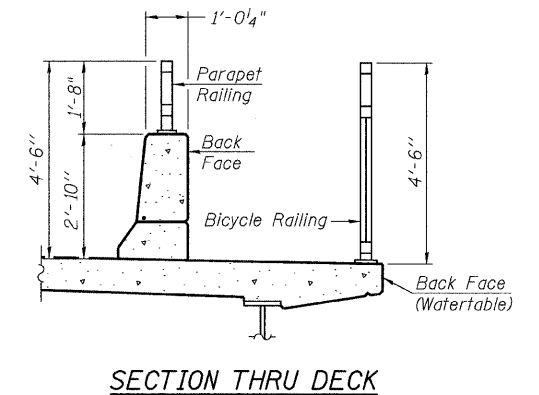
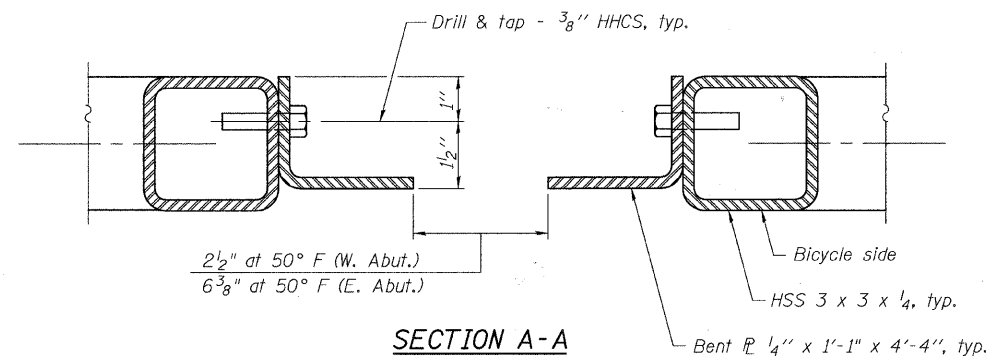


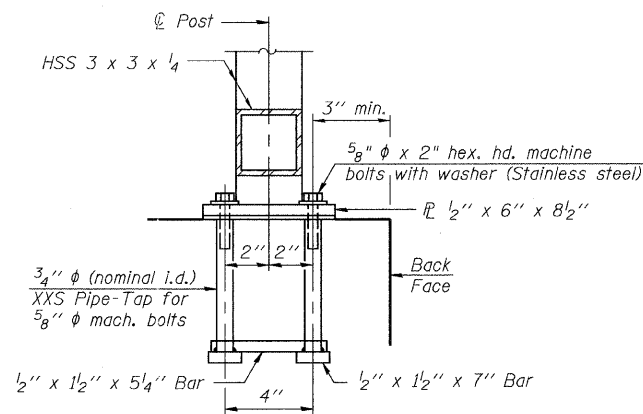
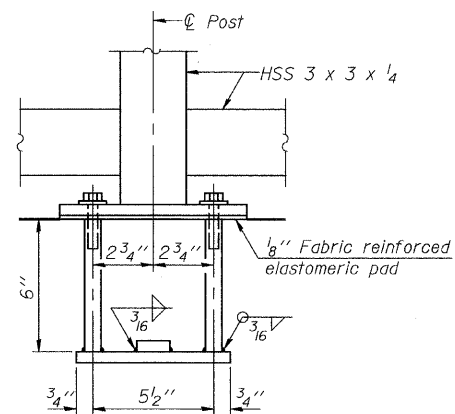
See Sheets 20, 40 and 43 Of 60 for Post Spacing



\* Structural steel bars shall conform to the requirements of AASHTO M 270 Grade 50.

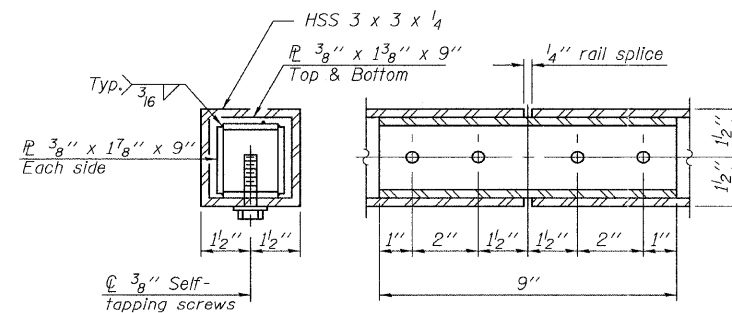
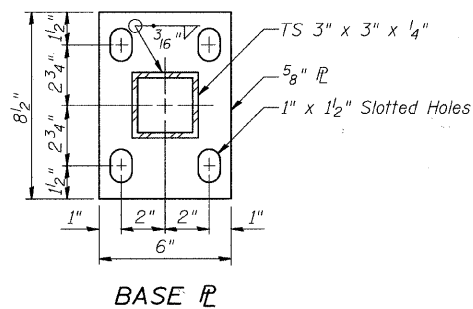


Panel	A	B	C	D
Bridge 1	7'-10 1/2"	6"	15	5 1/2"
Bridge 2-31	9'-4"	5"	17	6"
Bridge 32-66	9'-3"	4 1/2"	17	6"
Bridge 67	8'-7 3/8"	5 1/6"	17	5 1/2"
West Approach	7'-0"	6"	12	6"
East Approach	7'-0"	6"	12	6"

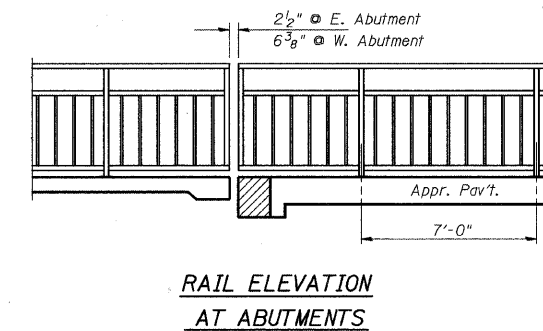


**ANCHOR BOLT DETAILS**

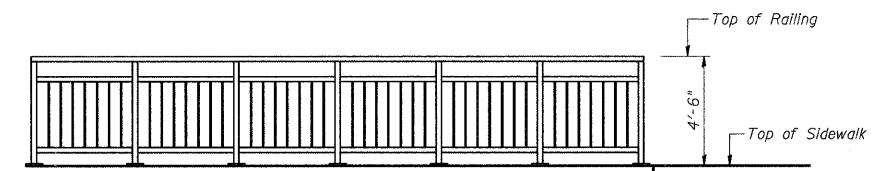
In lieu of the cast-in-place anchor device shown, the Contractor has the option of drilling and setting 5/8" phi anchor rods according to Article 509.06 of the Standard Specifications. Embedment shall be according to the manufacturer's specifications.



**RAIL SPLICE**



**RAIL ELEVATION AT ABUTMENTS**



**BICYCLE RAILING SIDE VIEW**

Note: All post, railing, splices, anchor devices, and bent plates shall be painted using the Inorganic Zinc Rich Primer/Acrylic/Acrylic Paint System.

**BILL OF MATERIAL**

Item	Unit	Quantity
Bicycle Railing	Foot	649

**BICYCLE RAILING DETAILS STRUCTURE NO. 099-4105**

SHEET NO. 24	RTE.	SECTION	COUNTY	TOTAL SHEETS	SHEET NO.
60 SHEETS	TR 55	90-16103-01-BR	WILL	255	168
		SN 099-4105		CONTRACT NO. 83126	
	FED. ROAD DIST. NO. 7	ILLINOIS	FED. AID PROJECT BRS-		

DESIGNED	JOH
CHECKED	BAN
DRAWN	TC
CHECKED	JOH