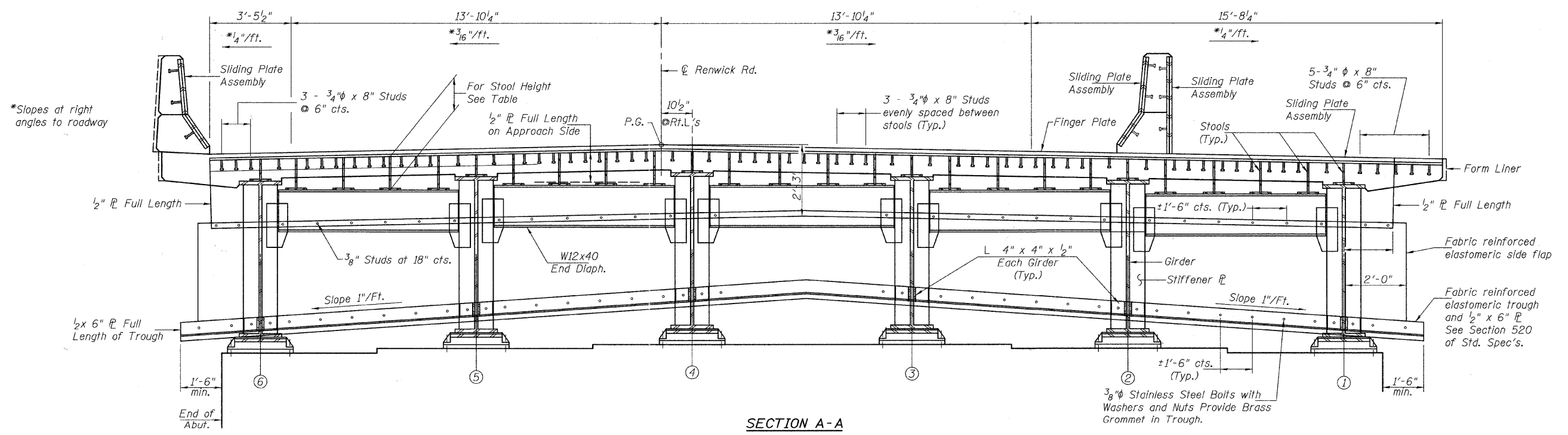


PLAN AT WEST ABUTMENT



SECTION A-A

STOOL HEIGHTS

STOOL MARK	A1	A2	A3	A4	A5	A6	A7	A8	A9	A10	A11	A12	A13	A14	A15	A16	A17	A18	A19	A20	A21	A22	A23	A24	A25	A26
STOOL HEIGHT	7"	11"	11 1/4"	11 3/8"	11 1/2"	6 7/8"	10 7/8"	11 1/8"	11 1/4"	11 1/4"	6 7/8"	10 7/8"	10 7/8"	11"	11 1/8"	6 7/8"	12 1/2"	12 1/2"	11 3/8"	11 1/4"	6 7/8"	12 5/8"	12 1/2"	11 3/4"	11 1/4"	6 7/8"
STOOL MARK	S1	S2	S3	S4	S5	S6	S7	S8	S9	S10	S11	S12	S13	S14	S15	S16	S17	S18	S19	S20	S21	S22	S23			
STOOL HEIGHT	11 1/8"	11 1/8"	11 1/8"	11 1/8"	11 1/8"	11 1/8"	11 1/8"	11 1/8"	11 1/8"	11 1/8"	11 1/8"	11 1/8"	11 1/8"	11 1/8"	11 1/8"	11 1/8"	11 1/8"	11 1/8"	11 1/8"	11 1/8"	11 1/8"	11 1/8"	11 1/8"			

* Stool Heights calculated at \bar{c} brg. (deck stools) or \bar{c} stool (abut. stools).
Actual stool height will vary along length of stool to match roadway grade.

EXPANSION JOINT DETAILS
AT WEST ABUTMENT
STRUCTURE NO. 099-4105

DESIGNED	JOH
CHECKED	BAN
DRAWN	TC
CHECKED	JOH

SHEET NO. 26 60 SHEETS	RTE.	SECTION	COUNTY	TOTAL SHEETS	SHEET NO.
	TR 55	90-16103-01-BR	WILL	255	170
		SN 099-4105		CONTRACT NO. 83126	
	FED. ROAD DIST. NO. 7	ILLINOIS	FED. AID PROJECT BRS-		