

3/4" x 8" Granular or Solid Flux Filled Headed Studs conforming to Art. 1006.32 of the Standard Specifications.

4- 3/4" high strength bolts each connection. Provide nut and 3" x 3" x 3/8" sq. washers at each bolt. 2" holes in stool flange.

3/8" Studs at 18" cts. with locking washer & nut automatically end welded. Provide brass grommet in side flap.

1/4" x 2" galvanized PL (full length). Use PL as template for drilling hole in abutment wall.

Silicone caulk along trough & abutment wall (full length)

3/4" Expansion bolts @ ±18" cts. See End of Trough Detail.

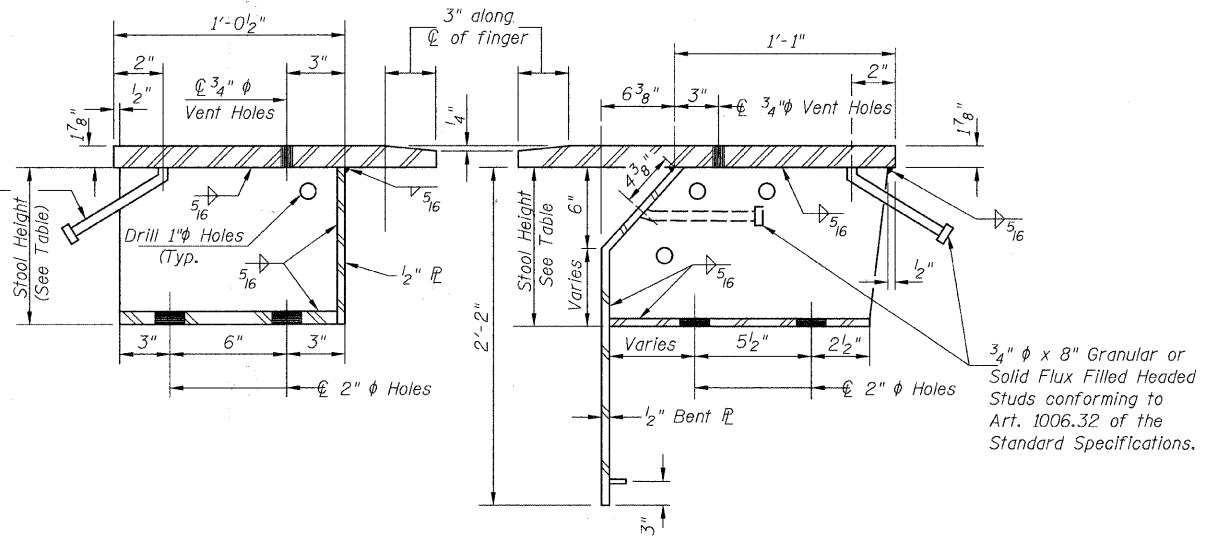
3/8" Stainless Steel Bolts w/locking washers & nuts. Provide brass grommet in trough.

**SECTION B-B**

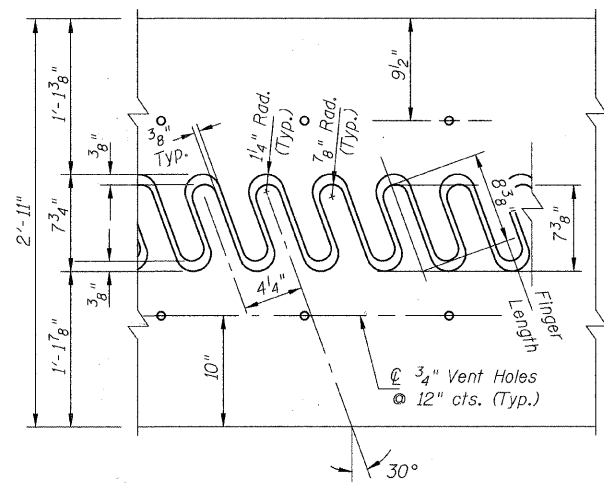
(At Right Angles to Back of Abut.) Horizontal Dimensions are at 50°F.

\* Beam flanges shall be clipped. See sheet 33 of 60.

\*\* 3/4" x 8" Granular or Solid Flux Filled Headed Studs conforming to Art. 1006.32 of the Standard Specifications.

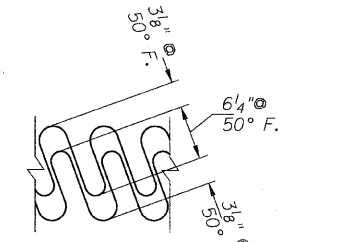


**STOOL DETAILS**



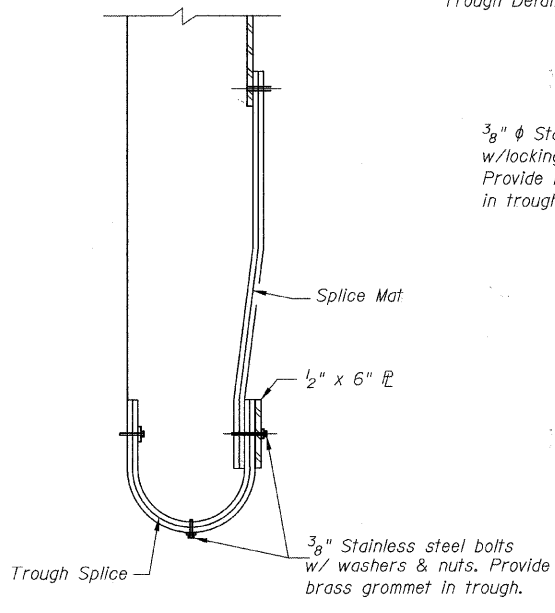
**FLAME CUTTING DIAGRAM**

Cut from PL 17 1/8" x 2'-11" x 36'-4"

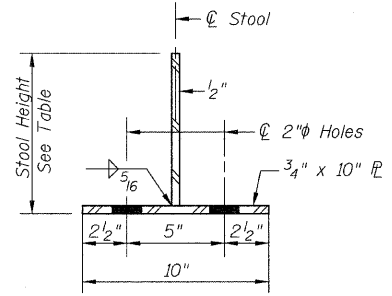


**FINGER PLATE SETTING DIAGRAM**

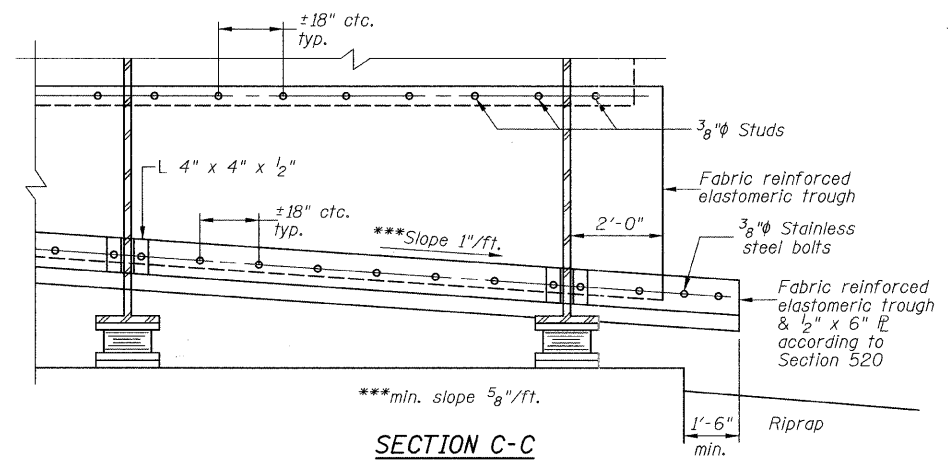
Note: Finger plate expansion joints shall be assembled in their final relative position with the ends in place for shop inspection and acceptance.



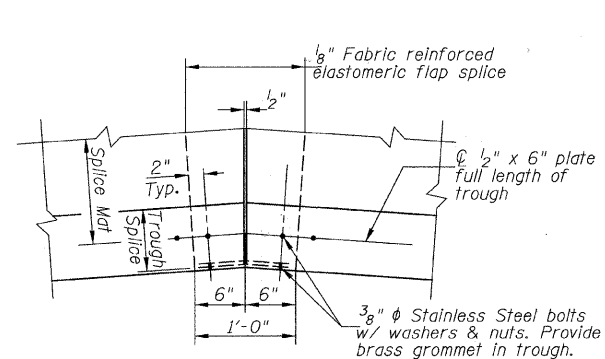
**SECTION THRU TROUGH SPLICE**



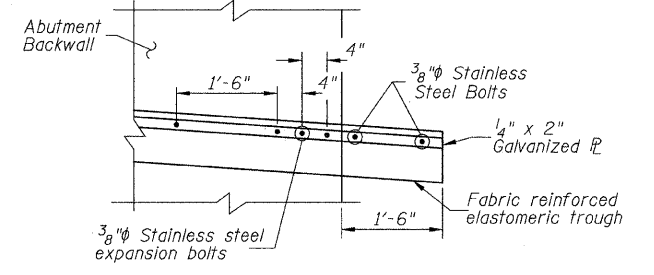
**SECTION THRU STOOL**



**SECTION C-C**



**TROUGH SPLICE DETAIL**



**END OF TROUGH DETAIL AT ABUT.**

**FINGER PLATE EXPANSION JOINT DETAILS AT WEST ABUTMENT STRUCTURE NO. 099-4105**

DESIGNED	JOH
CHECKED	BAN
DRAWN	TC
CHECKED	JOH

SHEET NO. 27	RTE.	SECTION	COUNTY	TOTAL SHEETS	SHEET NO.
	TR 55	90-16103-01-BR	WILL	255	171
60 SHEETS	SN 099-4105		CONTRACT NO. 83126		
	FED. ROAD DIST. NO. 7 ILLINOIS			FED. AID PROJECT BRS-	