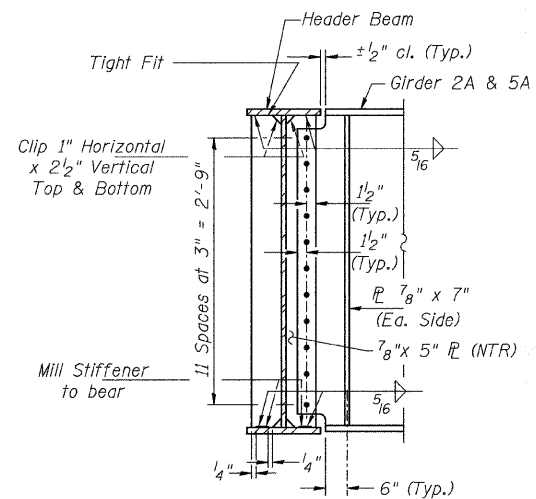


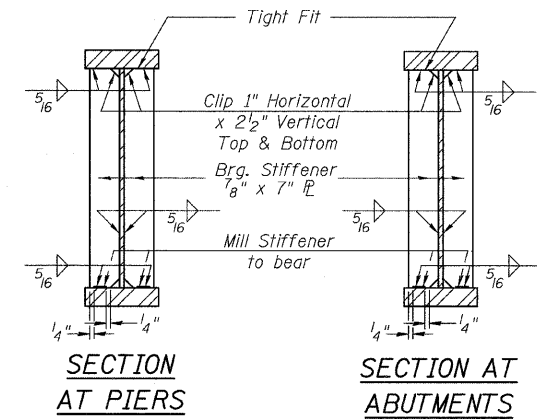
HEADER ELEVATION

(Girder 2A & 5A omitted for clarity. See Section C-C)

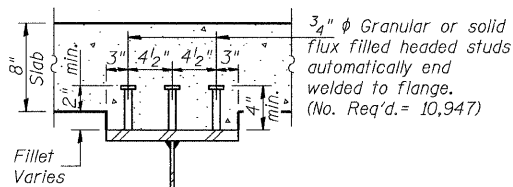
All plates of the header including stiffeners and splice plates shall be AASHTO M 270. Grade 50.



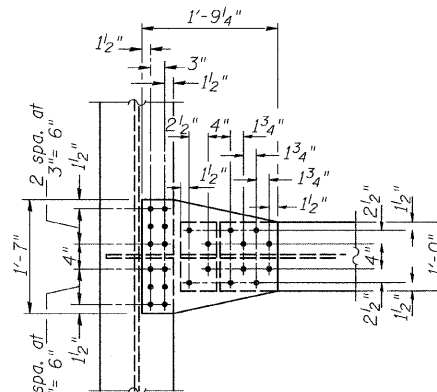
SECTION C-C



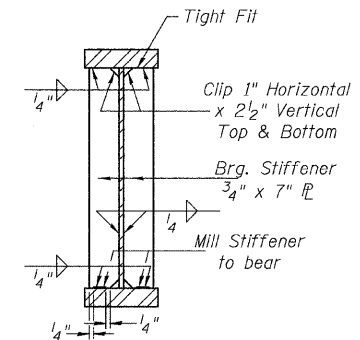
BEARING STIFFENER PLATES



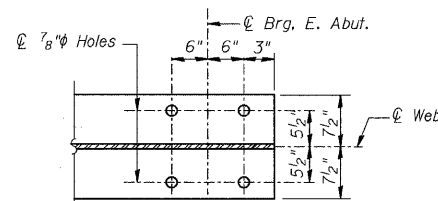
SECTION A-A



SECTION D-D

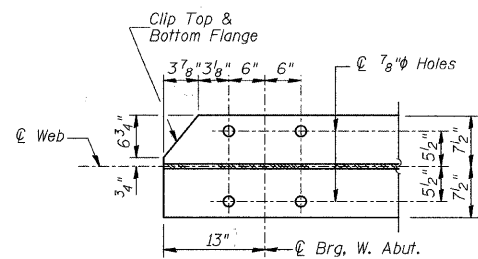


SECTION F-F



SECTION E-E

(East Abut.)



SECTION B-B

(West Abut.)

TOP OF WEB ELEVATIONS

For Fabrication Only

| Location | Girder 1 | Girder 2A | Girder 2 | Girder 3 | Girder 4 | Girder 5 | Girder 5A | Girder 6 |
|-----------------|----------|-----------|----------|----------|----------|----------|-----------|----------|
| ⊕ Brg. W. Abut. | 605.35 | - | 605.42 | 605.48 | 605.43 | 605.27 | - | 605.15 |
| ⊕ Splice 1 | 607.34 | - | 607.36 | 607.38 | 607.37 | 607.17 | - | 606.92 |
| ⊕ Brg. Pier 1 | 608.06 | - | 608.10 | 608.13 | 608.13 | 607.94 | - | 607.70 |
| ⊕ Splice 2 | 608.88 | - | 608.94 | 608.99 | 609.00 | 608.82 | - | 608.59 |
| ⊕ Splice 3 | 610.02 | - | 610.12 | 610.20 | 610.26 | 610.13 | - | 609.94 |
| ⊕ Brg. Pier 2 | 610.20 | - | 610.33 | 610.43 | 610.51 | 610.39 | - | 610.22 |
| Header | - | 610.40 | - | - | - | - | 610.51 | - |
| ⊕ Splice 4 | 610.38 | - | 610.53 | 610.66 | 610.76 | 610.65 | - | 610.50 |
| ⊕ Splice 5 | 610.06 | 610.17 | 610.29 | 610.47 | 610.61 | 610.55 | 610.50 | 610.42 |
| ⊕ Brg. Pier 3 | 609.61 | 609.81 | 609.88 | 610.08 | 610.24 | 610.25 | 610.22 | 610.09 |
| ⊕ Splice 6 | 609.16 | 609.32 | 609.47 | 609.69 | 609.87 | 609.95 | 609.81 | 609.76 |
| ⊕ Splice 7 | 607.42 | 607.62 | 607.83 | 608.09 | 608.33 | 608.34 | 608.34 | 608.31 |
| ⊕ Brg. Pier 4 | 606.43 | 606.64 | 606.87 | 607.13 | 607.37 | 607.40 | 607.42 | 607.38 |
| ⊕ Splice 8 | 605.56 | 605.80 | 606.03 | 606.29 | 606.53 | 606.57 | 606.59 | 606.57 |
| ⊕ Brg. E. Abut. | 603.05 | 603.31 | 603.56 | 603.82 | 604.06 | 604.11 | 604.12 | 604.10 |

STRUCTURAL STEEL DETAILS
STRUCTURE NO. 099-4105

| | |
|----------|-----|
| DESIGNED | JOH |
| CHECKED | BAN |
| DRAWN | TC |
| CHECKED | JDH |

2545B034

| | | | | | |
|--------------|--------------------------------|----------------|-----------------------|--------------|-----------|
| SHEET NO. 34 | RTE. | SECTION | COUNTY | TOTAL SHEETS | SHEET NO. |
| | TR 55 | 90-16103-01-BR | WILL | 255 | 178 |
| 60 SHEETS | SN 099-4105 | | CONTRACT NO. 83126 | | |
| | FED. ROAD DIST. NO. 7 ILLINOIS | | FED. AID PROJECT BRS- | | |