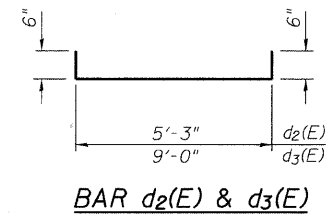
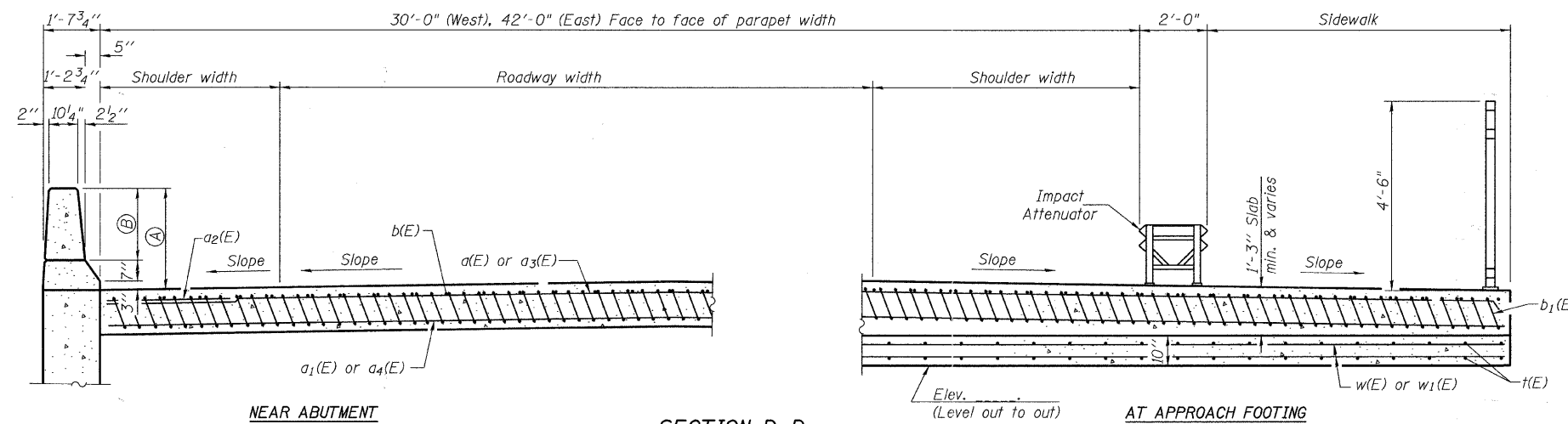
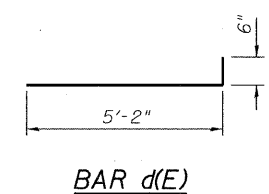


Notes:  
 Approach slab and parapet concrete shall be paid for as Concrete Superstructure.  
 Approach footing concrete shall be paid for as Concrete Structures.  
 Reinforcement shall be paid for as Reinforcement Bars, Epoxy Coated.  
 For  $v_2(E)$  bar details, see sheets 39 & 42 of 60.  
 The approach footing maximum applied service bearing pressure ( $Q_{max}$ ) = 2.0 ksf.  
 For bar splicer details, see sheet 49 of 60.  
 Cost of excavation for approach footing included with Concrete Structures.  
 For Porous Granular Embankment (Special) and drainage treatment details, see sheet 2 of 60.  
 For additional parapet details, see sheet 54 of 60.



BAR  $d_2(E)$  &  $d_3(E)$



BAR  $d(E)$

**TWO APPROACHES  
 BILL OF MATERIAL**

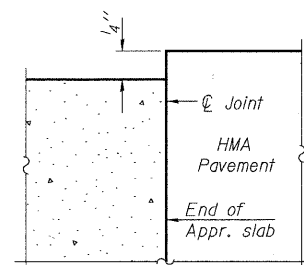
Bar	No.	Size	Length	Shape
$a_1(E)$	50	#4	26'-6"	—
$a_2(E)$	92	#5	26'-10"	—
$a_3(E)$	48	#6	6'-6"	—
$a_4(E)$	50	#4	33'-4"	—
	92	#5	33'-9"	—
$b(E)$	77	#4	29'-8"	—
$b_1(E)$	221	#9	29'-9"	—
$d(E)$	12	#5	5'-8"	L
$d_1(E)$	36	#5	7'-11"	L
$d_3(E)$	24	#5	10'-0"	L
$e(E)$	18	#4	13'-2"	—
$e_1(E)$	2	#8	13'-2"	—
$t(E)$	200	#4	11'-2"	—
$w(E)$	80	#5	26'-6"	—
$w_1(E)$	80	#5	32'-4"	—
Concrete Superstructure			Cu. Yd.	157.0
Concrete Structures			Cu. Yd.	35.9
Reinforcement Bars, Epoxy Coated			Pound	39,130

NEAR ABUTMENT

**SECTION D-D**

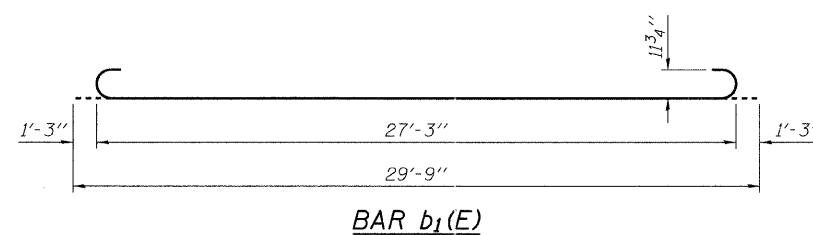
(See Plan for dimensions not shown)

- (A) Varies 2'-10" to 4'-6"
  - (B) Varies 2'-0" to 3'-8"
- (See Elevation view on Sheet 3 of 3)

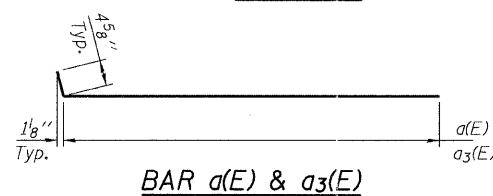


FLEXIBLE PAVEMENT

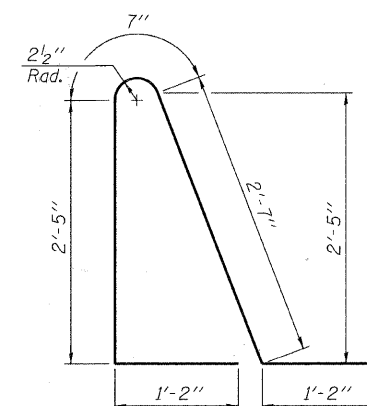
DETAIL A



BAR  $b_1(E)$



BAR  $a(E)$  &  $a_3(E)$



BAR  $d_1(E)$

(Sheet 2 of 3)  
**BRIDGE APPROACH SLAB DETAILS  
 STRUCTURE NO. 099-4105**

DESIGNED	JOH
CHECKED	BAN
DRAWN	TC
CHECKED	JOH

2545B052

SHEET NO. 52 60 SHEETS	RTE.	SECTION	COUNTY	TOTAL SHEETS	SHEET NO.
	TR 55	90-16103-01-BR	WILL	255	196
	SN 099-4105		CONTRACT NO. 83126		
	FED. ROAD DIST. NO. 7	ILLINOIS	FED. AID PROJECT BRS-		