

INDEX OF SHEETS

Sheet No.	Description
1	COVER SHEET
2	TYPICAL CROSS SECTION AND DETAILS
3	DETAILS & SCHEDULES

STANDARDS

701306-03	TRAFFIC CONTROL
701901-01	TRAFFIC CONTROL

SUMMARY OF QUANTITIES

CODE NO.	DESCRIPTION	QUANTITY	UNIT
* 40600100	BITUMINOUS MATERIALS (PRIME COAT)	10,441	GALLON
40600300	AGGREGATE (PRIME COAT)	213	TON
40600625	LEVELING BINDER (MACHINE METHOD), N50	2886	TON
40600982	HOT-MIX ASPHALT SURFACE REMOVAL - BUTT JOINT	317	SQ YD
40600990	TEMPORARY RAMP	45	SQ YD
* 40603310	HOT-MIX ASPHALT SURFACE CSE. MIX "C", N50	4404	TON
40800050	INCIDENTAL HOT-MIX ASPHALT SURFACING	170	TON
44000155	HOT MIX ASPHALT SURFACE REMOVAL, 1 1/2"	431	SQ YD
* 48101200	AGGREGATE SHOULDERS, TYPE B	2718	TON
67100100	MOBILIZATION	1	L SUM
* 70100460	TRAFFIC CONTROL AND PROTECTION, STD 701306	1	L SUM
* 70300100	SHORT-TERM PAVEMENT MARKING	4239	FOOT

STA. 0+15
CONSTRUCTION STARTS
(STA. 0+00 = C RT 17)

Construction Code 0005
* Special Provisions

CONTRACT NO. 87489

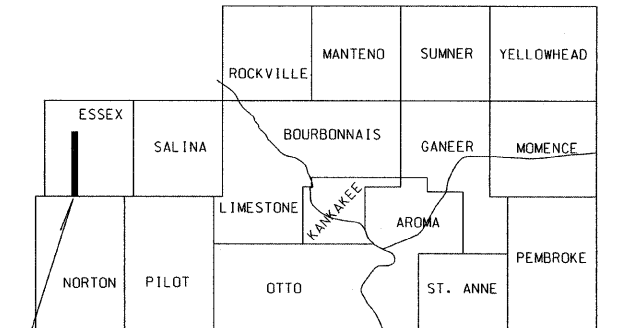
J.U.L.I.E. 1-800-892-0123

STATE OF ILLINOIS
DEPARTMENT OF TRANSPORTATION
COUNTY OF KANKAKEE
DEPARTMENT OF HIGHWAYS
PLANS FOR PROPOSED
FEDERAL AID SECONDARY PROJECT
SECTION 08-00100-05-RS
F.A.S. 1301 (C.H.41) PROJECT RS-1301(105)
JOB NO. C-93-115-11

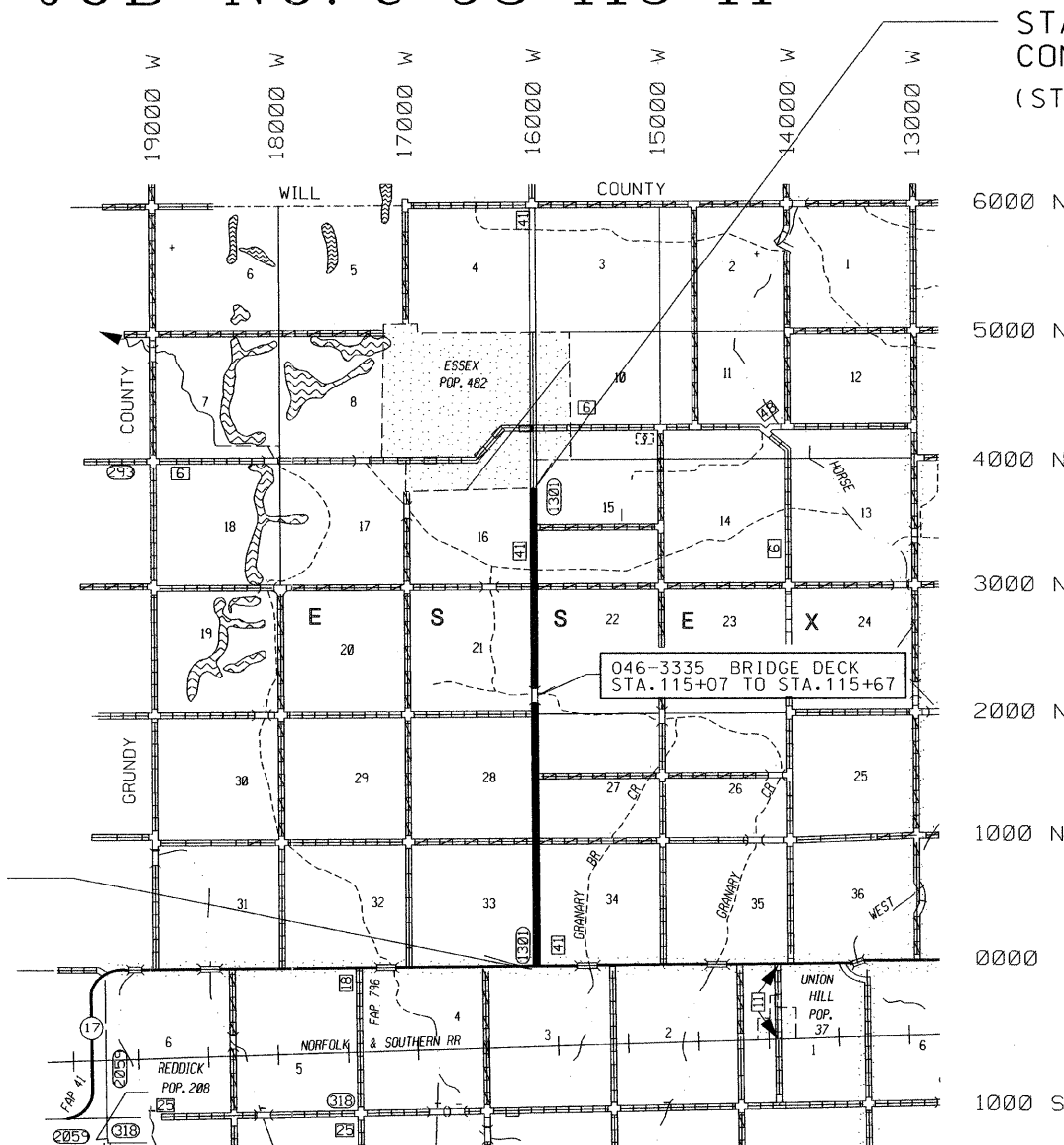
F. A. S. ROUTE NO.	SEC.	COUNTY	NO. SHEETS	SHEET NO.
1301	*	Kankakee	3	1
PROJECT RS-1301(105)			CONTRACT NO. 87489	

* 08-00100-05-RS

KANKAKEE COUNTY



PROJECT LOCATION



LOCATION MAP

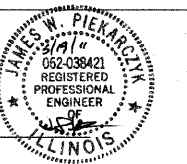
NET LENGTH = 21,315 LIN FT = 4.04 MILES

THE ACCEPTANCE OF THIS PROJECT IS BASED ON THE MINIMUM DESIGN CRITERIA FOR 3R GUIDELINES

CLASS II ROAD
2011 CURRENT A.D.T. = 1978
2018 DESIGN A.D.T. = 2120
DESIGN SPEED = 55 M.P.H.
ROADWAY CLASSIFICATION = COLLECTOR

STATE OF ILLINOIS
DEPARTMENT OF TRANSPORTATION
DIVISION OF HIGHWAYS

Approved 5-19 2011



JAMES W. PIEKARCZYK, P.E.
KANKAKEE COUNTY ENGINEER

Passed May 25, 2011

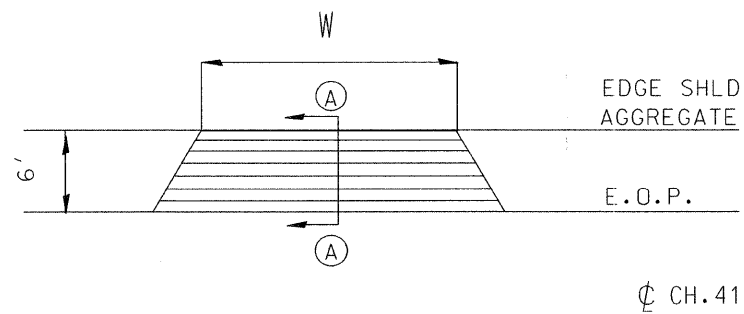
DISTRICT 3 IMPLEMENTATION ENGINEER

Releasing for Bid Based on Limited Review May 25, 2011

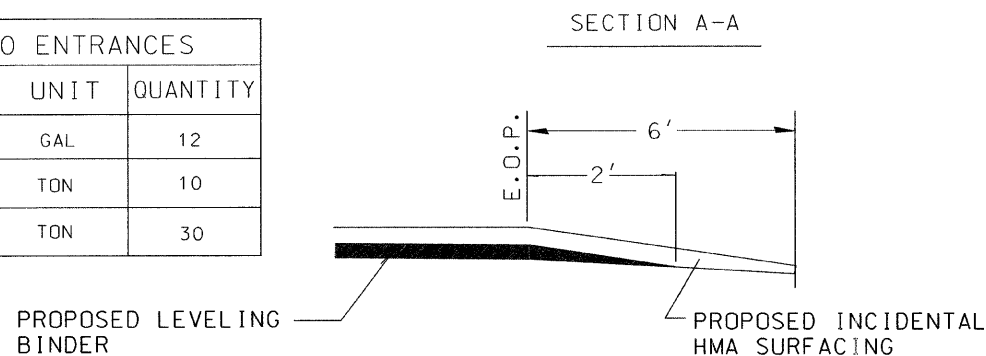
ERIC THERKILDSEN
REGION 2 ENGINEER (ACTING)

TYPICAL ENTRANCE DETAIL

W : WIDTH OF APPROACH PADS IS ESTIMATED AT 20' PER ENTRANCE . THE ACTUAL CONSTRUCTED WIDTH MAY VARY AS DIRECTED BY THE ENGINEER TO FIT THE EXISTING ENTRANCES .
FIELD ENTRANCES SHALL NOT RECEIVE HOT-MIX ASPHALT SURFACING UNLESS DIRECTED BY THE ENGINEER.

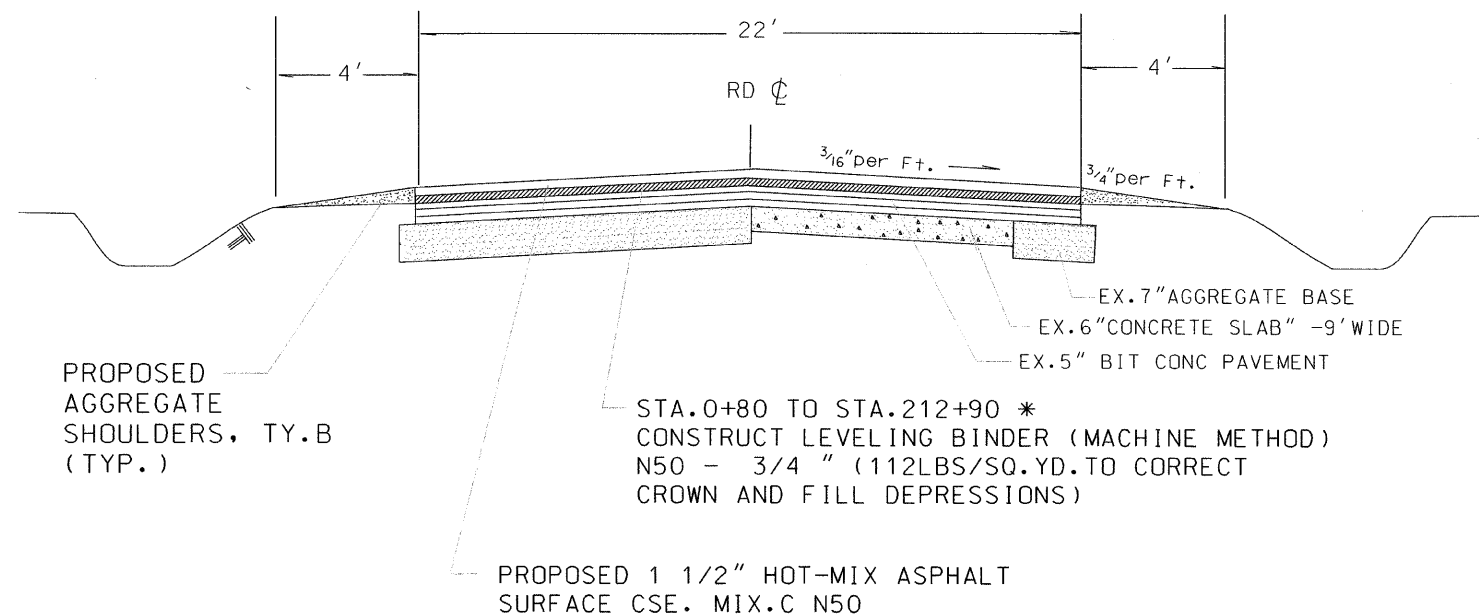


ESTIMATED QUANTITIES- 20 ENTRANCES		
ITEM	UNIT	QUANTITY
BITUMINOUS MATERIALS (PRIME COAT)	GAL	12
LEVELING BINDER (MM) N50	TON	10
INCIDENTAL HMA SURFACING	TON	30



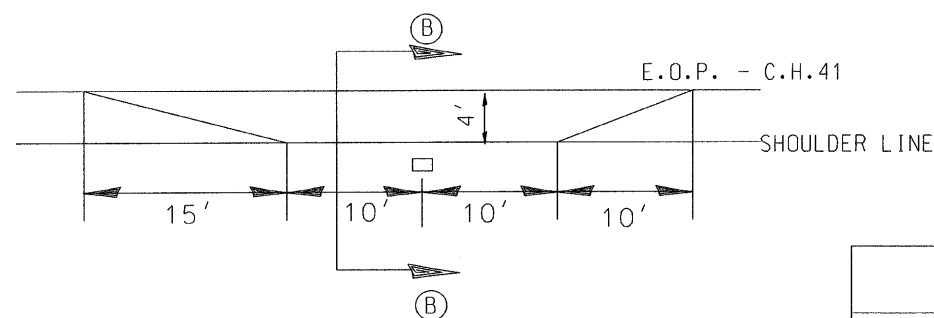
TYPICAL CROSS SECTION

STA. 0+15 TO STA. 213+20

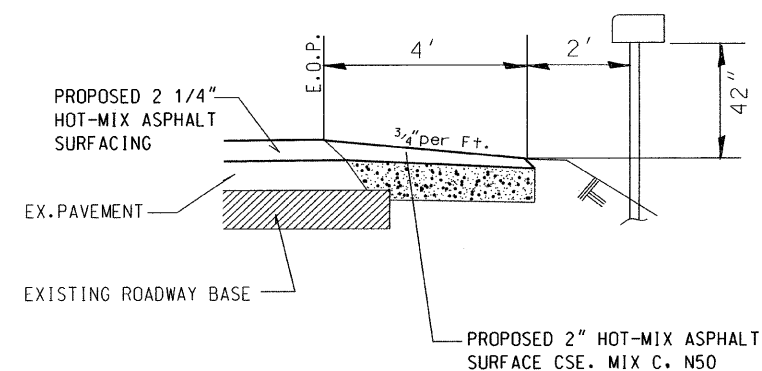


* LEVELING BINDER OMISSION (BRIDGE LOCATION)
STA. 114+77 TO STA. 116+07

TYPICAL MAILBOX TURNOUT DETAIL



SECTION B-B



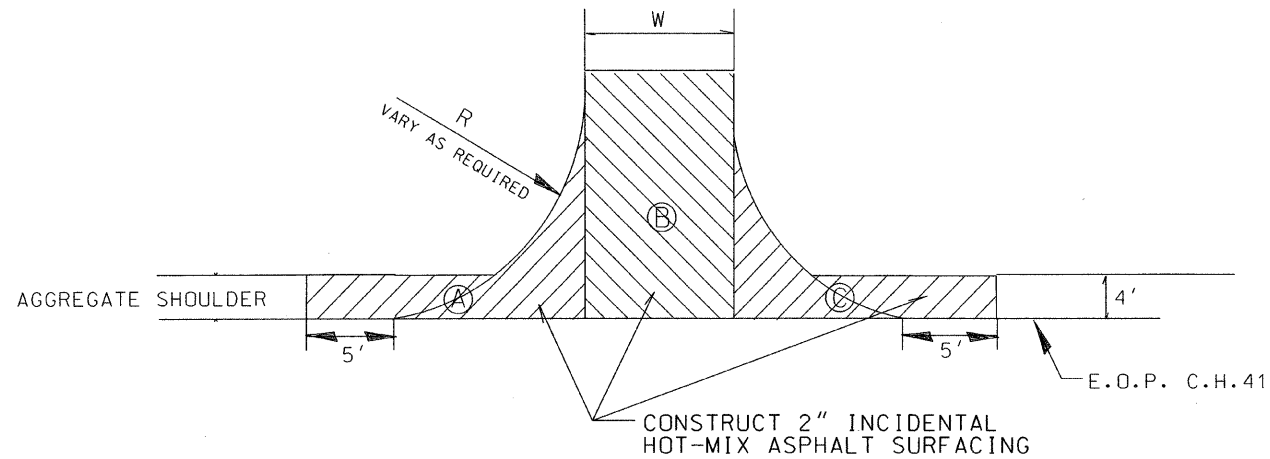
ESTIMATED QUANTITIES - 8 MAILBOX TURNOUTS		
ITEM	UNIT	QUANTITY
BIT. MATERIALS (PRIME COAT)	GAL	8
HOT-MIX ASPHALT SURFACE CSE MIX C N50	TON	24

ALL MBTO'S HAVE BEEN PREVIOUSLY CONSTRUCTED AND SHALL RECEIVE HMA SURFACING ONLY.

ESTIMATED QUANTITIES ON TANGENTS

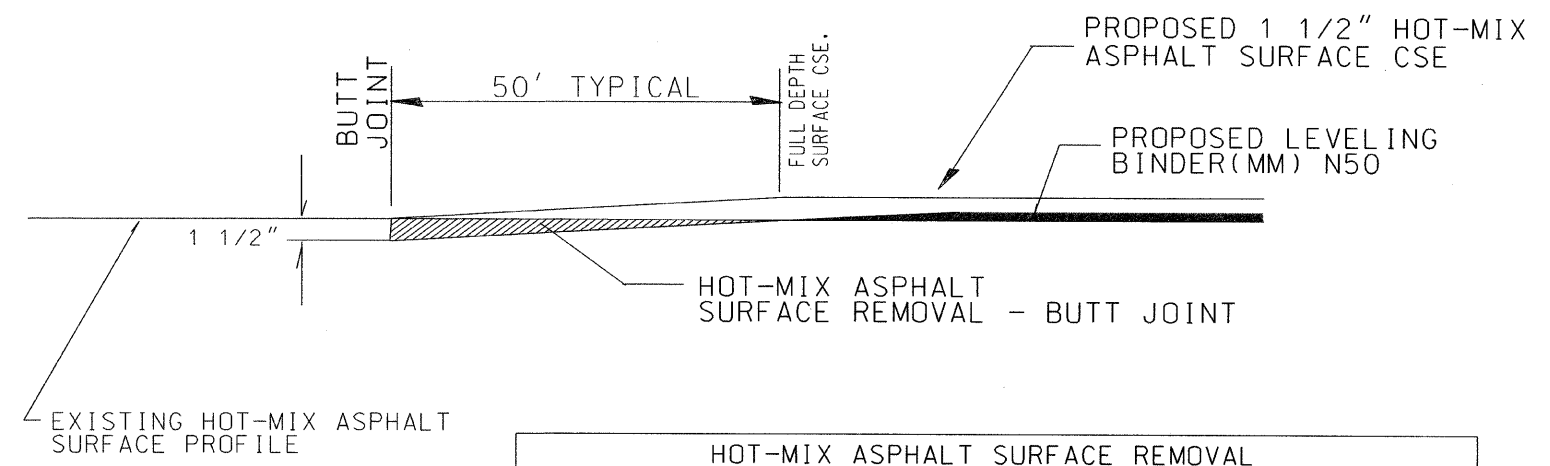
ITEM	UNIT	QUANTITY
AGGREGATE SHOULDERS TY.B	TON	2718
BITUMINOUS MATERIALS (PRIME COAT)	GALLON	10,361
AGGREGATE (PRIME COAT)	TON	207
HOT-MIX ASPHALT SURFACE CSE MIX C. N50	TON	4380
LEVELING BINDER (MM) N50	TON	2886
SHORT-TERM PAVEMENT MARKING	FOOT	4239

INTERSECTION DETAIL



SECTION	COUNTY	TOTAL SHEETS	SHEET NO.
08-00100-05-RS	KANKAKEE	3	3
CONTRACT NO. 87489			

PAVEMENT REMOVAL DETAILS



STATION	AREA	WIDTH	RADIUS	INCIDENTAL HMA SURFACING (TON)	BIT. MATRLS. (PRIME COAT) (GAL)	AGGREGATE (PRIME COAT) (TON)	LOCATION
0+17	A C		65	30	20	2	IL RT 17
54+17LT	A B C	18	30	15	5	0.5	1000N
54+17RT	A B C	18	30	15	5	0.5	1000N
80+82LT	A B C	18	30	10	5	0.5	1500N
80+82RT	A B C	18	30	15	5	0.5	1500N
107+18LT	A B C	20	30	15	5	0.5	2000N
160+23LT	A B C	20	30	15	5	0.5	3000N
160+23RT	A B C	20	30	15	5	0.5	3000N
186+75RT	A B C	16	20	10	5	0.5	3500N
TOTALS				140	60	6	

STATION	HMA SURFACE REMOVAL - BUTT JOINT	HMA SURFACE REMOVAL - 1 1/2" *	TEMPORARY RAMP (3' Wide)
0+15	244		38
114+57 to 116+17		431	
213+20	73		7
TOTALS	317 SQ YD	431 SQ YD	45 SQ YD

BRIDGE DECK *
 LOCATIONS WIDTH
 STA. 115+07 TO STA. 115+67 28'
 * RESURFACE WITH 1 1/2" HMA SURFACE CSE. (INCLUDED IN TANGENT)

Pavement Design Data

Design Period = 15 Years
 ADT = 1978 (2011) 2120 (2018)
 P.V. = 90% = 1908 S.U. = 6% = 127 M.U. = 4% = 85
 I.B.R. = 7.0
 T.F. = 0.35
 S.N. = 2.85
 Pavement Structure Number
 Ex. 9" AGGREGATE BASE (crushed) 9 x 0.08 = 0.72
 Ex. 3.5" BIT. CL. I SURFACING 3.5 x 0.23 = 0.80
 Ex. 1.50" BIT. CL. I SURFACING 1.50 x 0.30 = 0.45
 Prop. 2.25" HMA Surface Cse. 2.25 x 0.40 = 1.20
 2.87

	LEVEL BINDER	HMA SURFACE
PG GRADE	PG58-22	PG58-22
MAX % RAP ALLOWABLE**	SEE SPECIAL PROVISION	SEE SPECIAL PROVISION
DESIGN AIR VOIDS	4.0%	4.0%
MIXTURE COMPOSITION	IL 9.5	IL 9.5
FRICTION AGGREGATE	MIXTURE C	MIXTURE C
DENSITY TEST METHOD	SATISFACTION OF THE ENGINEER	CORRELATION

** IF RAP OPTION IS SELECTED, THE ASPHALT CEMENT GRADE MAY NEED TO BE ADJUSTED. THIS WILL BE DETERMINED BY THE ENGINEER.

Marshall Stability ≥ 1700

GENERAL NOTES:

- IT SHALL BE THE CONTRACTOR'S RESPONSIBILITY TO DETERMINE THE ACTUAL LOCATION OF ALL UTILITY LOCATIONS .
- PERMANENT PAVEMENT MARKINGS TO BE INSTALLED BY THE KANKAKEE COUNTY HIGHWAY DEPT.
- FLAGMEN SHALL BE REQUIRED DURING PRIMING OPERATIONS.
- "BUMP SIGNS" SHALL BE REQUIRED AT ALL TANGENT HOT-MIX ASPHALT SURFACE REMOVAL - BUTT JOINT LOCATIONS. THE COST SHALL BE CONSIDERED AS INCLUDED IN THE TRAFFIC CONTROL PAY ITEM.